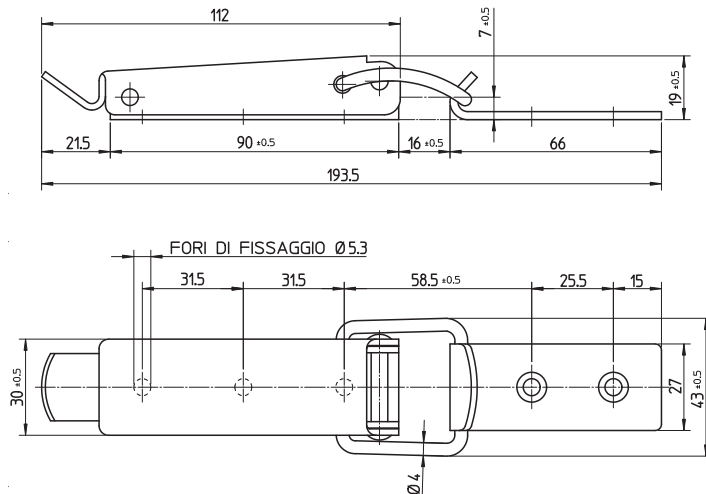


TL00 / TLL00 / TLS00

TL00 - Latch

Max. working strenght 2000N



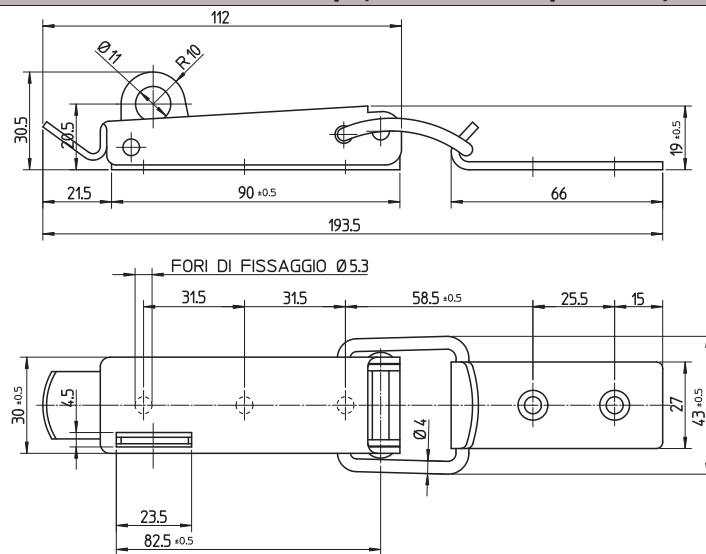
Latch	Strike	Ø holes
TL00.1*	PG00.1*	5,3

Material and Finishing	Code
Steel, unfinished	AR
Steel, nickel plated	NC
Steel, zinc plated Cr6 free	AA
Stainless steel	BP

Insert Material/Finishing code * into Latch/Strike Part No.

TLL00 - Latch with hasp (for use with padlock)

Max. working strenght 2000N



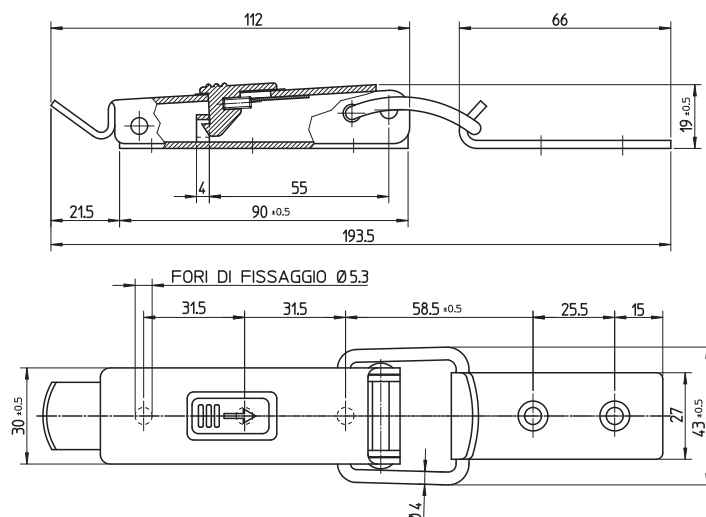
Latch	Strike	Ø holes
TLL00.1*	PG00.1*	5,3

Material and Finishing	Code
Steel, unfinished	AR
Steel, nickel plated	NC
Steel, zinc plated Cr6 free	AA
Stainless steel	BP

Insert Material/Finishing code * into Latch/Strike Part No.

TLS00 - Latch with secondary lock

Max. working strenght 2000N



Latch	Strike	Ø holes
TLS00.1*	PG00.1*	5,3

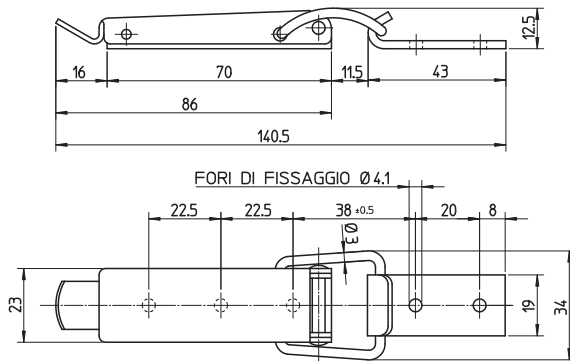
Material and Finishing	Code
Steel, nickel plated	NC

Insert Material/Finishing code * into Latch/Strike Part No.

TL01 / TLL01 / TL02

TL01 - Latch

Max. working strenght 1500N



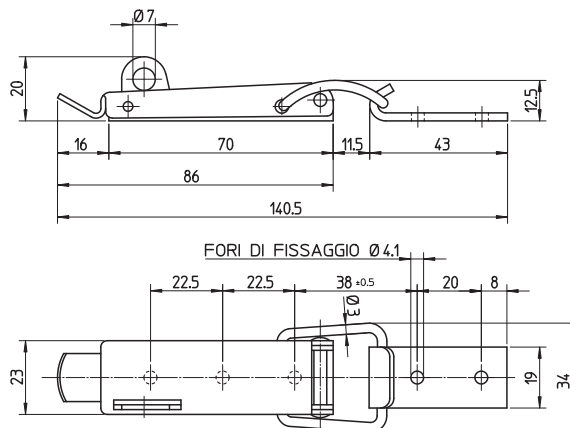
Latch	Strike	Ø holes
TL01.1*	PG01.1*	4,1

Material and Finishing	Code
Steel, unfinished	AR
Steel, nickel plated	NC
Steel, zinc plated Cr6 free	AA
Stainless steel	BP

Insert Material/Finishing code * into Latch/Strike Part No.

TLL01 - Latch with hasp (for use with padlock)

Max. working strenght 1500N



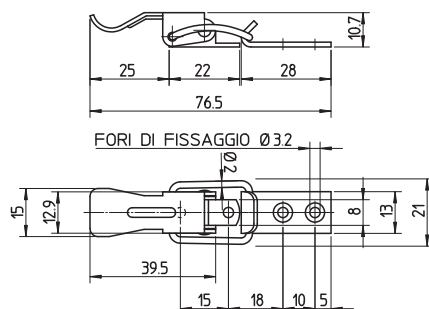
Latch	Strike	Ø holes
TLL01.1*	PG01.1*	4,1

Material and Finishing	Code
Steel, unfinished	AR
Steel, nickel plated	NC
Steel, zinc plated Cr6 free	AA
Stainless steel	BP

Insert Material/Finishing code * into Latch/Strike Part No.

TL02 - Latch

Max. working strenght 400N



Latch	Strike	Ø holes
TL02.1*	PG02.1*	3,2

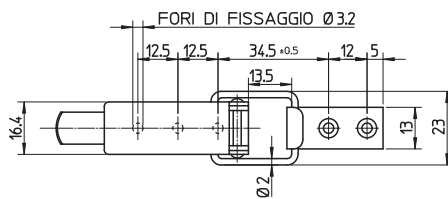
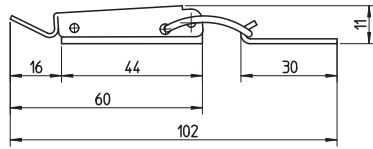
Material and Finishing	Code
Steel, unfinished	AR
Steel, nickel plated	NC
Steel, zinc plated Cr6 free	AA
Stainless steel	BP

Insert Material/Finishing code * into Latch/Strike Part No.

TL03 / TLL03 / TLS03

TL03 - Latch

Max. working strenght 1500N



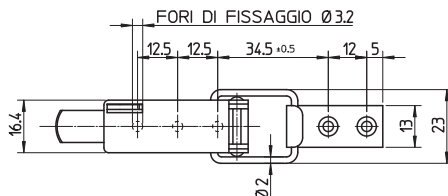
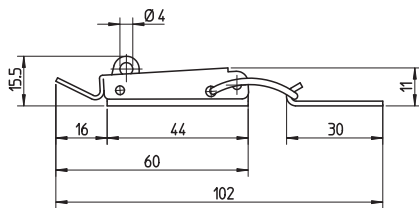
Latch	Strike	Ø holes
TL03.1*	PG03.1*	3,2

Material and Finishing	Code
Steel, unfinished	AR
Steel, nickel plated	NC
Steel, zinc plated Cr6 free	AA
Stainless steel	BP

Insert Material/Finishing code * into Latch/Strike Part No.

TLL03 - Latch with hasp (for use with padlock)

Max. working strenght 1500N



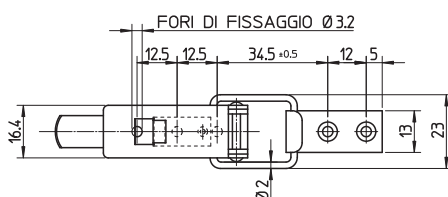
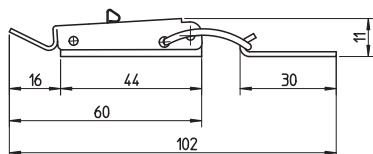
Latch	Strike	Ø holes
TLL03.1*	PG03.1*	3,2

Material and Finishing	Code
Steel, unfinished	AR
Steel, nickel plated	NC
Steel, zinc plated Cr6 free	AA
Stainless steel	BP

Insert Material/Finishing code * into Latch/Strike Part No.

TLS03 - Latch with secondary lock

Max. working strenght 1500N



Latch	Strike	Ø holes
TLS03.1*	PG03.1*	3,2

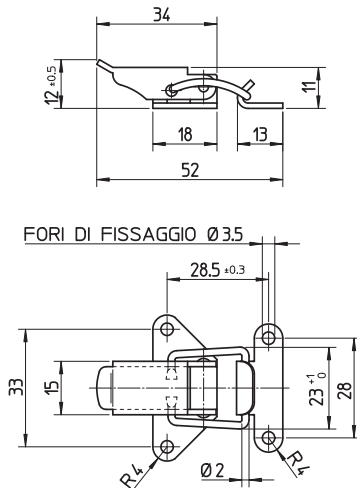
Material and Finishing	Code
Steel, zinc plated Cr6 free	AA
Stainless steel	BP

Insert Material/Finishing code * into Latch/Strike Part No.

TL04 / TLL04 / TL05

TL04 - Latch

Max. working strenght 550N



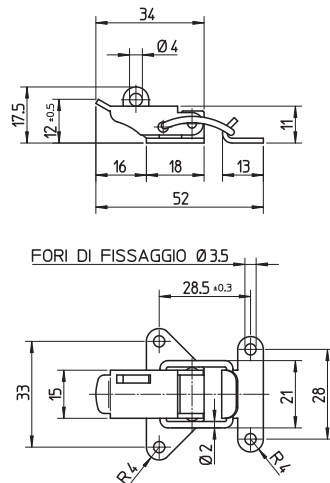
Latch	Strike	Ø holes
TL04.1*	PG04.1*	3,5

Material and Finishing	Code
Steel, unfinished	AR
Steel, nickel plated	NC
Steel, zinc plated Cr6 free	AA
Stainless steel	BP

Insert Material/Finishing code * into Latch/Strike Part No.

TLL04 - Latch with hasp (for use with padlock)

Max. working strenght 550N



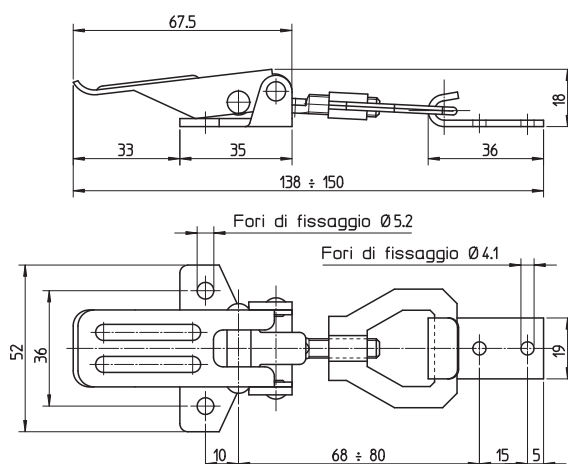
Latch	Strike	Ø holes
TLL04.1*	PG04.1*	3,2

Material and Finishing	Code
Steel, unfinished	AR
Steel, nickel plated	NC
Steel, zinc plated Cr6 free	AA

Insert Material/Finishing code * into Latch/Strike Part No.

TL05 - Latch adjustable

Max. working strenght 1100N



Latch	Strike	Ø holes
TL05.1*	PG05.1*	5,2

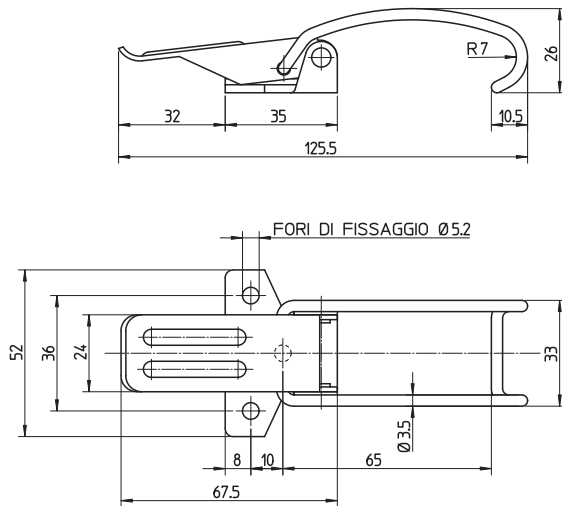
Material and Finishing	Code
Steel, unfinished	AR
Steel, nickel plated	NC
Steel, zinc plated Cr6 free	AA
Stainless steel	BP

Insert Material/Finishing code * into Latch/Strike Part No.

TL05.* / TLS05

TL05.2 Latch

Max. working strenght 1500N



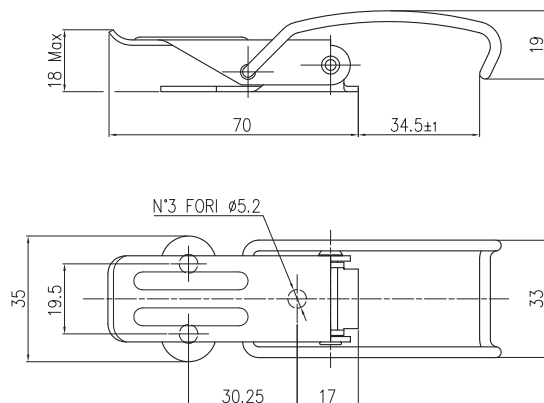
Latch	Strike	Ø holes
TL05.2*	not required	5,2

Material and Finishing	Code
Steel, zinc plated Cr6 free	AA

Insert Material/Finishing code * into Latch Part No.

TL05.4 - Latch

Max. working strenght 1500N



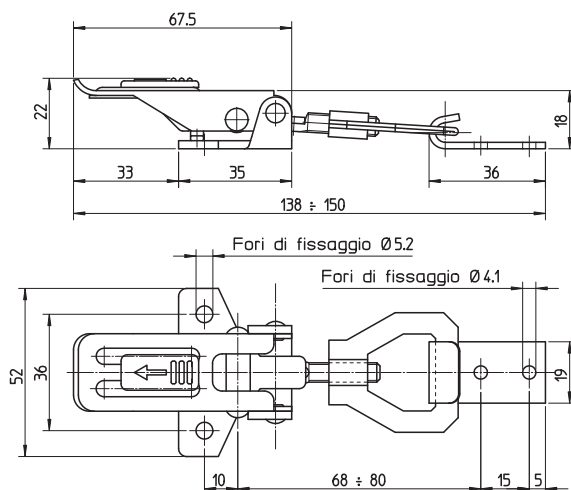
Latch	Strike	Ø holes
TL05.4*	not required	5,2

Material and Finishing	Code
Stainless steel	BP

Insert Material/Finishing code * into Latch Part No.

TLS05 - Latch with secondary lock

Max. working strenght 1500N



Latch	Strike	Ø holes
TLS05.1*	PG05.1*	5,2

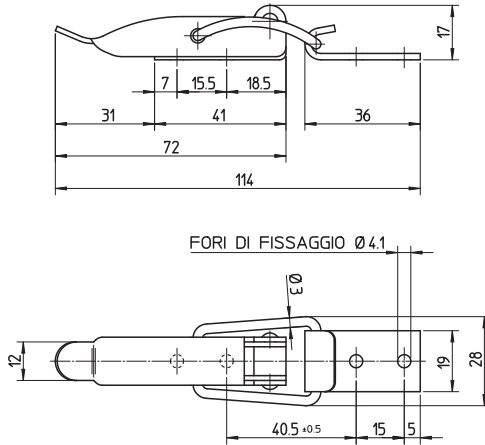
Material and Finishing	Code
Steel, nickel plated	NC
Stainless steel	BP

Insert Material/Finishing code * into Latch/Strike Part No.

TL06 / TLL06 / TL07

TL06 - Latch

Max. working strenght 1000N



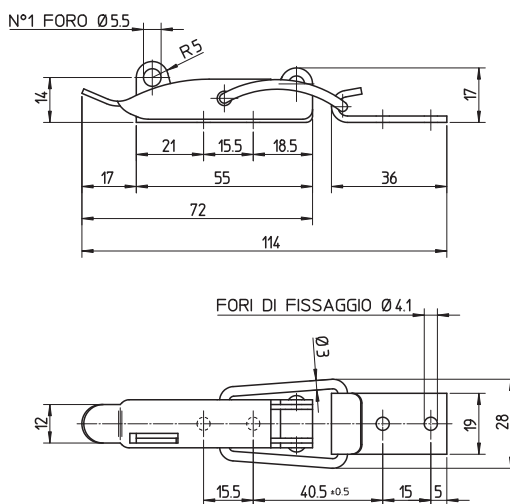
Latch	Strike	Ø holes
TL06.1*	PG05.1*	4,1

Material and Finishing	Code
Steel, unfinished	AR
Steel, nickel plated	NC
Steel, zinc plated Cr6 free	AA
Stainless steel	BP

Insert Material/Finishing code * into Latch/Strike Part No.

TLL06 - Latch with hasp (for use with padlock)

Max. working strenght 1500N



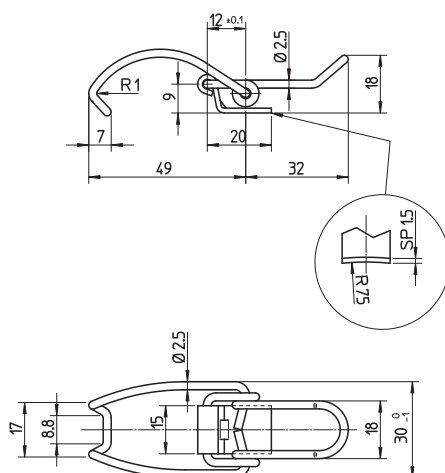
Latch	Strike	Ø holes
TLL06.1*	PG05.1*	4,1

Material and Finishing	Code
Steel, unfinished	AR
Steel, nickel plated	NC
Steel, zinc plated Cr6 free	AA
Stainless steel	BP

Insert Material/Finishing code * into Latch/Strike Part No.

TL07 - Latch

Max. working strenght 300N



Latch	Strike	Ø holes
TL07.1*	not required	3,2

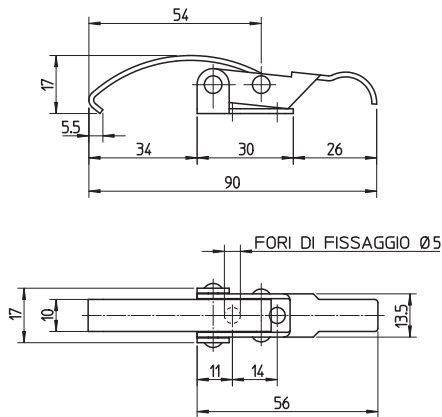
Material and Finishing	Code
Steel, zinc plated Cr6 free	AA

Insert Material/Finishing code * into Latch Part No.

TL08 / TLL09 / TL10

TL08 - Latch

Max. working strenght 500N



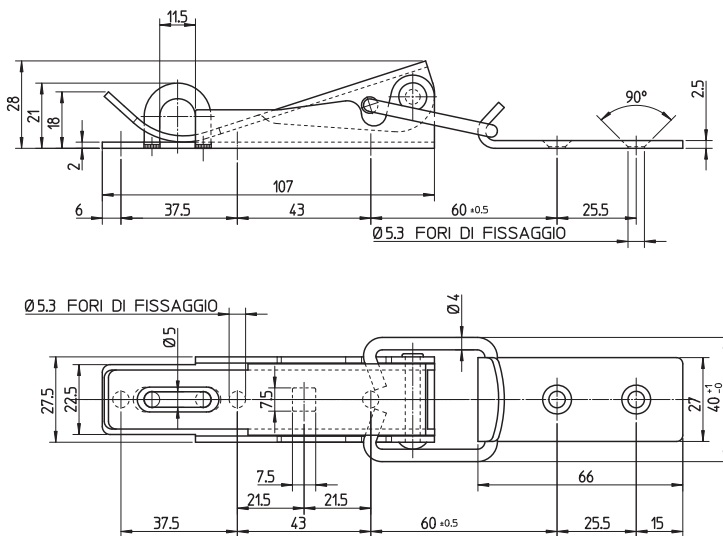
Latch	Strike	Ø holes
TL08.1*	not required	5,0

Material and Finishing	Code
Steel, unfinished	AR
Steel, nickel plated	NC
Steel, zinc plated Cr6 free	AA
Stainless steel	BP

Insert Material/Finishing code * into Latch Part No.

TLL09 - Latch with hasp (for use with padlock)

Max. working strenght 2000N



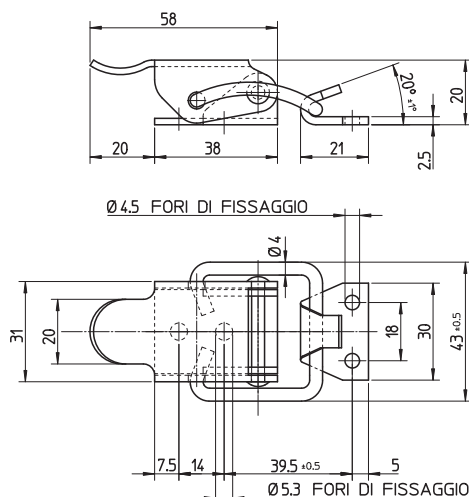
Latch	Strike	Ø holes
TLL09.1*	PG00.1*	5,3

Material and Finishing	Code
Steel, zinc plated Cr6 free	AA

Insert Material/Finishing code * into Latch/Strike Part No.

TL10 - Latch

Max. working strenght 1500N



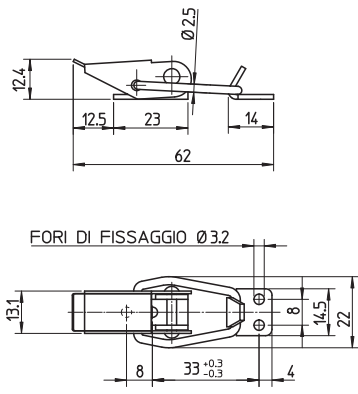
Latch	Strike	Ø holes
TL10.1*	PG52.1*	5,3

Material and Finishing	Code
Steel, zinc plated Cr6 free	AA

Insert Material/Finishing code * into Latch/Strike Part No.

TL27 / TL28 / TLL28

TL27 - Latch	Max. working strenght 400N
---------------------	-----------------------------------



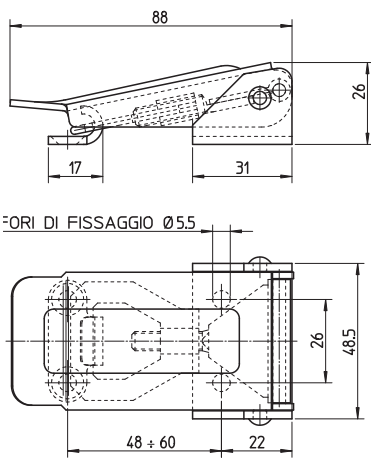
FORI DI FISSAGGIO Ø3.2

Latch	Strike	Ø holes
TL27.1*	PG27.1*	3,2

Material and Finishing	Code
Steel, zinc plated Cr6 free	AA

Insert Material/Finishing code * into Latch/Strike Part No.

TL28 - Latch adjustable	Max. working strenght 1500N
--------------------------------	------------------------------------



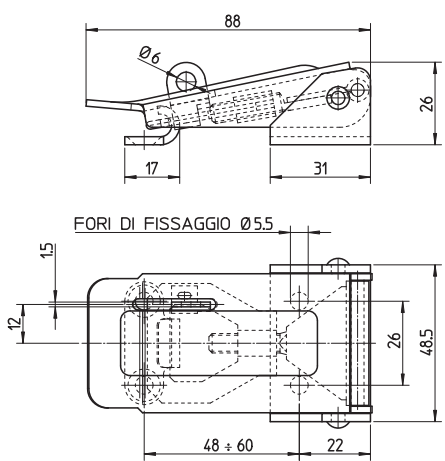
FORI DI FISSAGGIO Ø5.5

Latch	Strike	Ø holes
TL28.1*	PG28.1*	5,5

Material and Finishing	Code
Steel, zinc plated Cr6 free	AA
Stainless steel	BP

Insert Material/Finishing code * into Latch/Strike Part No.

TLL28 - Latch adjustable with hasp	Max. working strenght 1500N
---	------------------------------------



FORI DI FISSAGGIO Ø5.5

Latch	Strike	Ø holes
TLL28.1*	PG28.1*	5,2

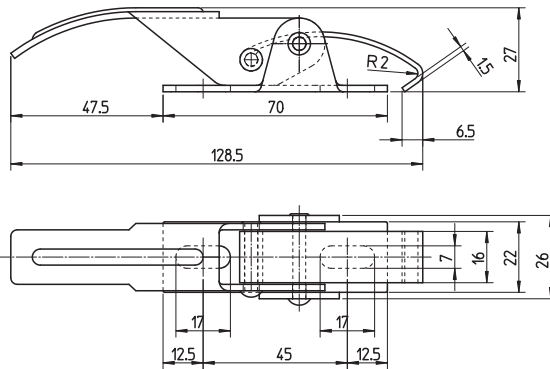
Material and Finishing	Code
Steel, zinc plated Cr6 free	AA

Insert Material/Finishing code * into Latch/Strike Part No.

TL19.* / TL40

TL19 - Latch

Max. working strenght 700N



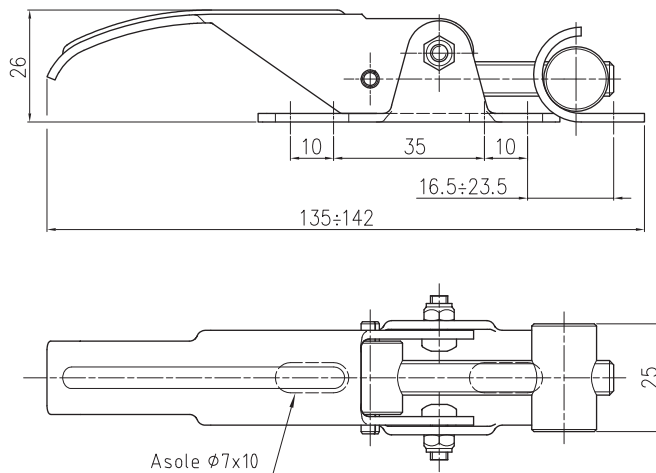
Latch	Strike	Ø holes
TL19.1*	not required	7,0

Material and Finishing	Code
Steel, zinc plated Cr6 free	AA

Insert Material/Finishing code * into Latch Part No.

TL19.10 - Latch adjustable

Max. working strenght 1500N



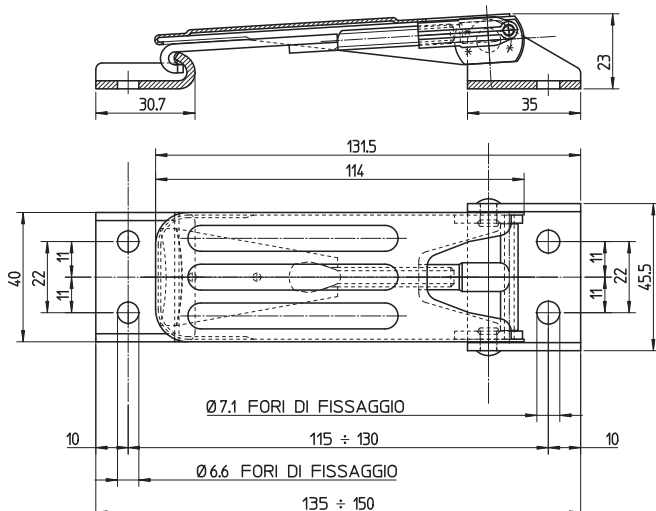
Latch	Strike	Ø holes
TL19.10*	PG19.10*	7,0

Material and Finishing	Code
Steel, zinc plated Cr6 free	AA

Insert Material/Finishing code * into Latch/Strike Part No.

TL40 - Latch adjustable

Max. working strenght 2000N



Latch	Strike	Ø holes
TL40.1*	PG40.1*	7,1

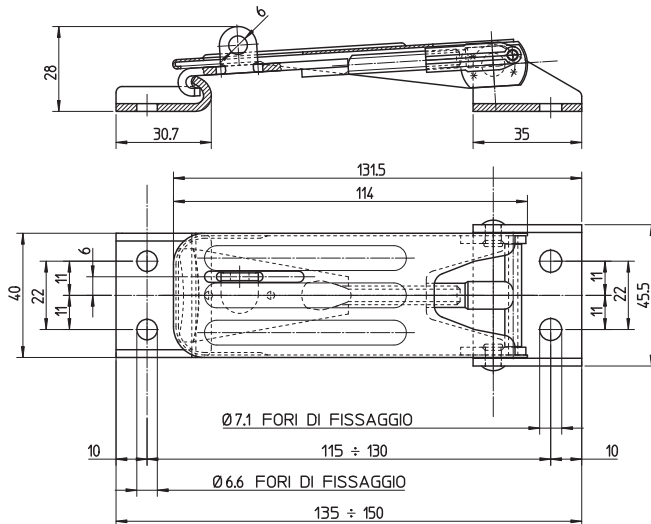
Material and Finishing	Code
Steel, zinc plated Cr6 free	AA

Insert Material/Finishing code * into Latch/Strike Part No.

TLL40 / TL42 / TL43

TLL40 - Latch adjustable with hasp

Max. working strenght 2000N



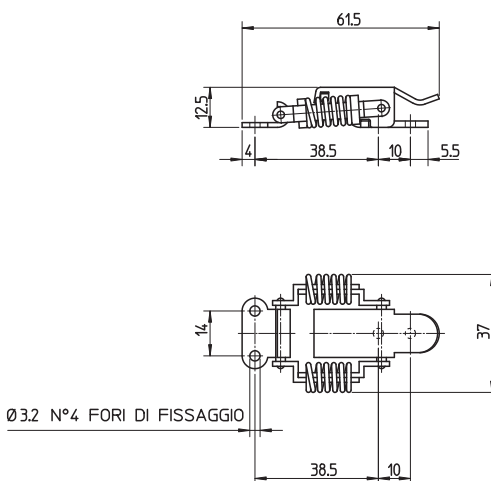
Latch	Strike	Ø holes
TLL40.1*	PG40.1*	7,1

Material and Finishing	Code
Steel, zinc plated Cr6 free	AA

Insert Material/Finishing code * into Latch/Strike Part No.

TL42 - Latch pre-loaded

Max. working strenght 500N



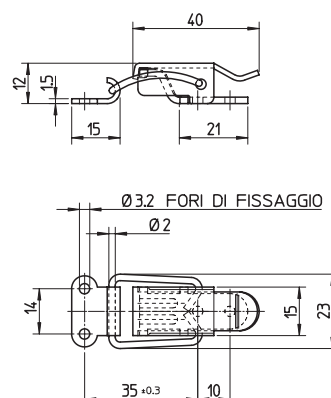
Latch	Strike	Ø holes
TL42.1*	PG42.1*	3,2

Material and Finishing	Code
Steel, zinc plated Cr6 free	AA
Stainless steel	BP

Insert Material/Finishing code * into Latch/Strike Part No.

TL43 - Latch

Max. working strenght 550N



Latch	Strike	Ø holes
TL43.1*	PG42.1*	3,2

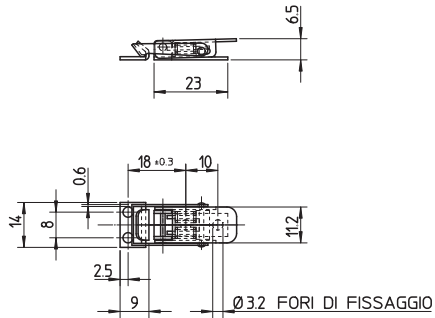
Material and Finishing	Code
Steel, zinc plated Cr6 free	AA
Stainless steel	BP

Insert Material/Finishing code * into Latch/Strike Part No.

TL44 / TL45 / TL26

TL44 - Latch pre-loaded

Max. working strenght 150N



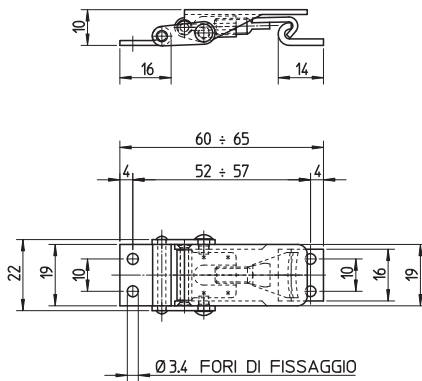
Latch	Strike	Ø holes
TL44.1*	PG44.1*	3,2

Material and Finishing	Code
Steel, zinc plated Cr6 free	AA

Insert Material/Finishing code * into Latch/Strike Part No.

TL45 - Latch

Max. working strenght 150N



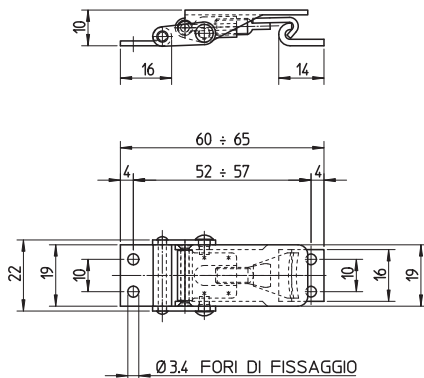
Latch	Strike	Ø holes
TL45.1*	PG44.1*	3,2

Material and Finishing	Code
Steel, zinc plated Cr6 free	AA

Insert Material/Finishing code * into Latch/Strike Part No.

TL26 - Latch adjustable

Max. working strenght 750N



Latch	Strike	Ø holes
TL26.1*	PG26.1*	3,4

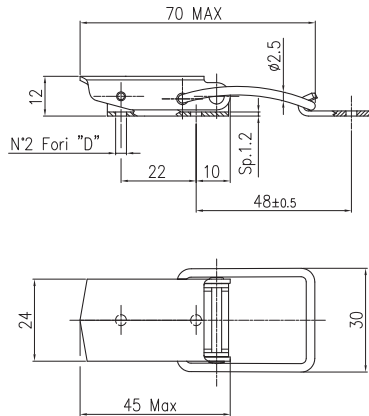
Material and Finishing	Code
Steel, zinc plated Cr6 free	AA

Insert Material/Finishing code * into Latch/Strike Part No.

TL14.* / TLS14.*

TL14.2 - Latch

Max. working strenght 300N



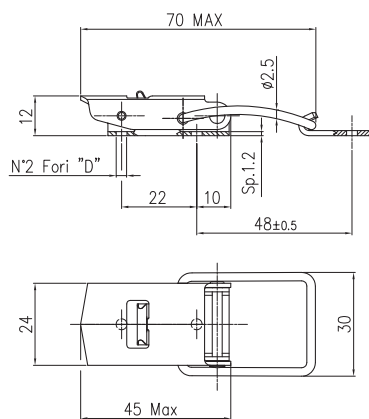
Latch	Strike	Ø holes
TL14.2*	PG14.1*	3,1
TL14.20*	PG14.1*	4,0
TL14.25*	PG14.1*	3,5

Material and Finishing	Code
Steel, zinc plated Cr6 free	AA
Stainless steel	BP

Insert Material/Finishing code * into Latch/Strike Part No.

TLS14.2 - Latch with secondary lock

Max. working strenght 300N



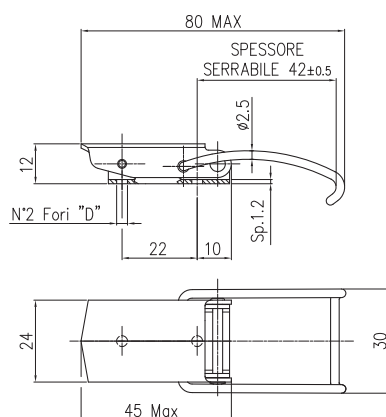
Latch	Strike	Ø holes
TLS14.2*	PG14.1*	3,1
TLS14.20*	PG14.1*	4,0
TLS14.25*	PG14.1*	3,5

Material and Finishing	Code
Steel, zinc plated Cr6 free	AA
Stainless steel	BP

Insert Material/Finishing code * into Latch/Strike Part No.

TL14.3 - Latch

Max. working strenght 300N



Latch	Strike	Ø holes
TL14.3*	not required	3,1
TL14.30*	not required	4,0
TL14.35*	not required	3,5

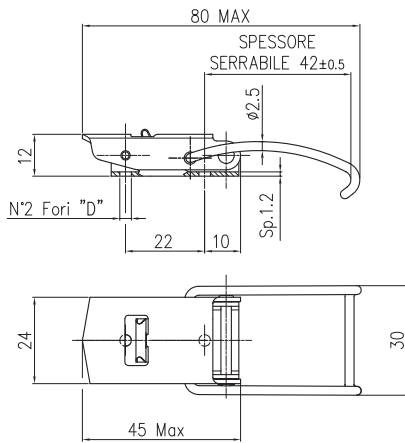
Material and Finishing	Code
Steel, zinc plated Cr6 free	AA
Stainless steel	BP

Insert Material/Finishing code * into Latch Part No.

TLS14.* / TL17 / TLS17

TLS14.3 - Latch with secondary lock

Max. working strenght 300N



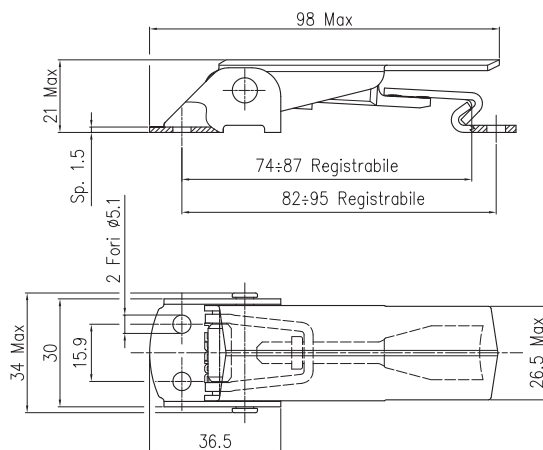
Latch	Strike	Ø holes
TLS14.3*	not required	3,1
TLS14.30*	not required	4,0
TLS14.35*	not required	3,5

Material and Finishing	Code
Steel, zinc plated Cr6 free	AA
Stainless steel	BP

Insert Material/Finishing code * into Latch Part No.

TL17 - Latch adjustable

Max. working strenght 2700N



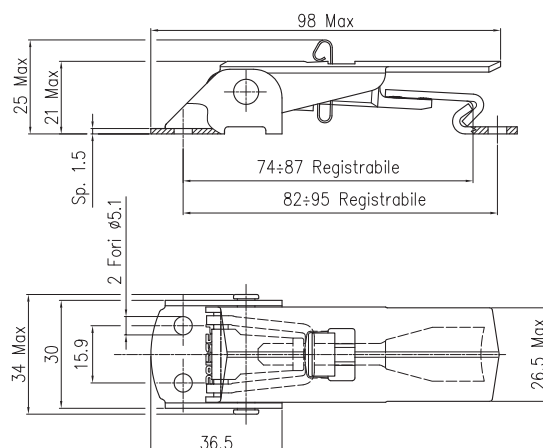
Latch	Strike	Ø holes
TL17.1*	PG17.1*	5,1

Material and Finishing	Code
Steel, zinc plated Cr6 free	AA
Stainless steel	BP

Insert Material/Finishing code * into Latch/Strike Part No.

TLS17 - Latch adjustable with secondary lock

Max. working strenght 2700N



Latch	Strike	Ø holes
TLS17.1*	PG17.1*	5,1

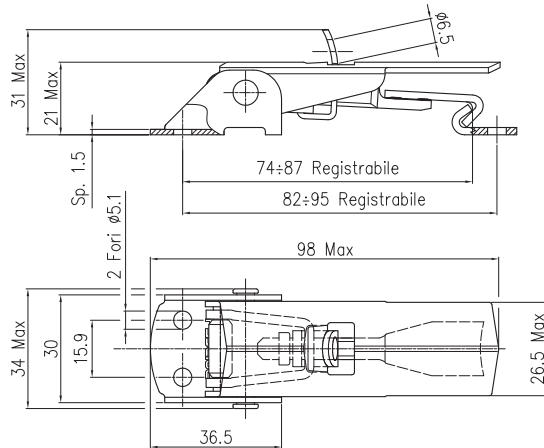
Material and Finishing	Code
Steel, zinc plated Cr6 free	AA
Stainless steel	BP

Insert Material/Finishing code * into Latch/Strike Part No.

TLL17 / TL18 / TLS18

TLL17 - Latch adjustable with hasp

Max. working strenght 2700N



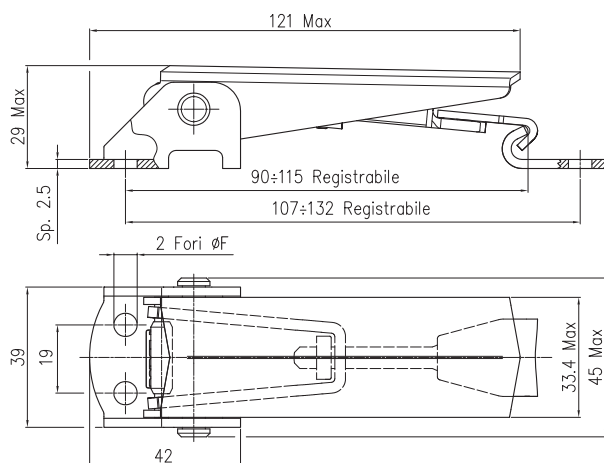
Latch	Strike	Ø holes
TLL17.1*	PG17.1*	5,1

Material and Finishing	Code
Steel, zinc plated Cr6 free	AA
Stainless steel	BP

Insert Material/Finishing code * into Latch/Strike Part No.

TL18 - Latch adjustable

Max. working strenght 4200N



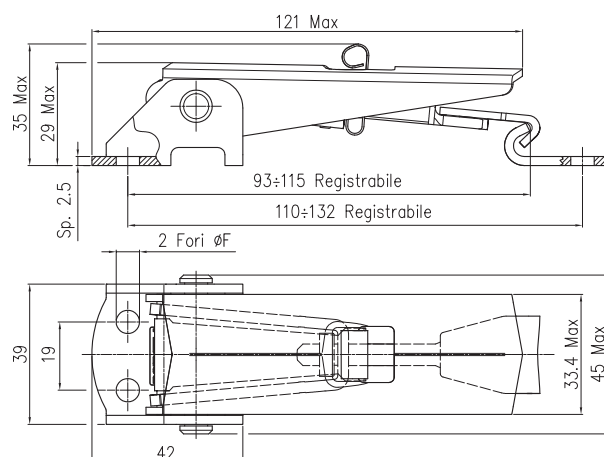
Latch	Strike	Ø holes
TL18.1*	PG18.1*	5,1
TL18.5*	PG18.5*	6,5

Material and Finishing	Code
Steel, zinc plated Cr6 free	AA
Stainless steel	BP

Insert Material/Finishing code * into Latch/Strike Part No.

TLS18 - Latch adjustable with secondary lock

Max. working strenght 4200N



Latch	Strike	Ø holes
TLS18.1*	PG18.1*	5,1
TLS18.5*	PG18.5*	6,5

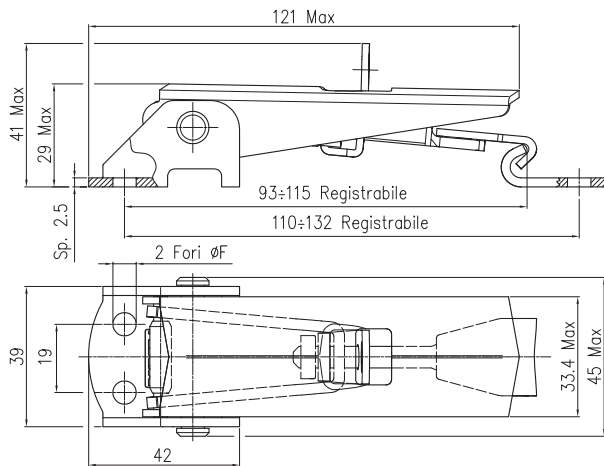
Material and Finishing	Code
Steel, zinc plated Cr6 free	AA
Stainless steel	BP

Insert Material/Finishing code * into Latch/Strike Part No.

TLL18 / TLZ18 / TL46

TLL18 - Latch adjustable with hasp

Max. working strenght 4200N



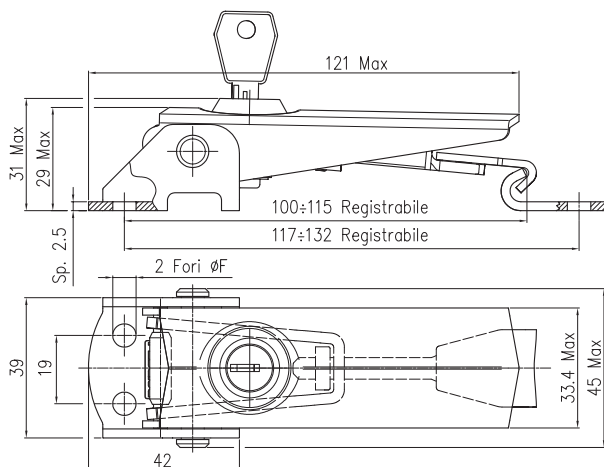
Latch	Strike	Ø holes
TLL18.1*	PG18.1*	5,1
TLL18.5*	PG18.5*	6,5

Material and Finishing	Code
Steel, zinc plated Cr6 free	AA
Stainless steel	BP

Insert Material/Finishing code * into Latch/Strike Part No.

TLZ18 - Latch adjustable with key-lock

Max. working strenght 4200N



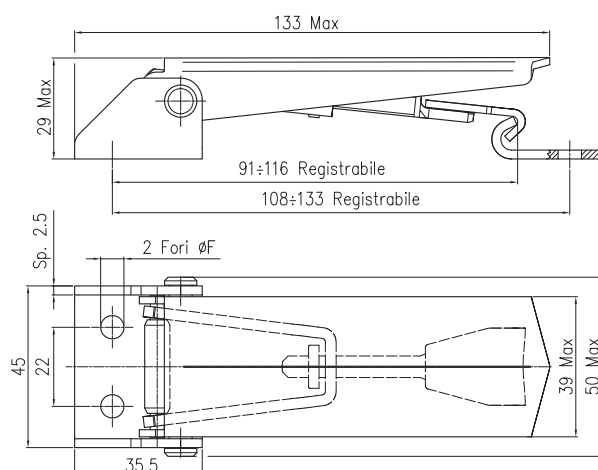
Latch	Strike	Ø holes
TLZ18.1*	PG18.1*	5,1
TLZ18.5*	PG18.5*	6,5

Material and Finishing	Code
Steel, zinc plated Cr6 free	AA

Insert Material/Finishing code * into Latch/Strike Part No.

TL46 - Latch

Max. working strenght 4200N



Latch	Strike	Ø holes
TL46.1*	PG18.1*	6,5
TL46.50*	PG18.5*	9,0

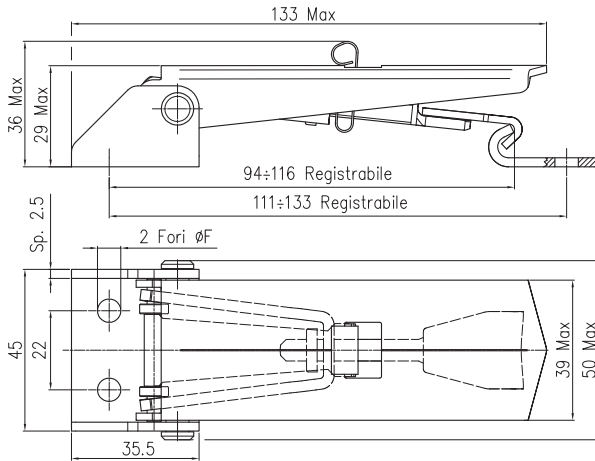
Material and Finishing	Code
Steel, zinc plated Cr6 free	AA
Stainless steel	BP

Insert Material/Finishing code * into Latch/Strike Part No.

TLS46 / TLL46 / TL51

TLS46 - Latch adjustable with secondary lock

Max. working strenght 4200N



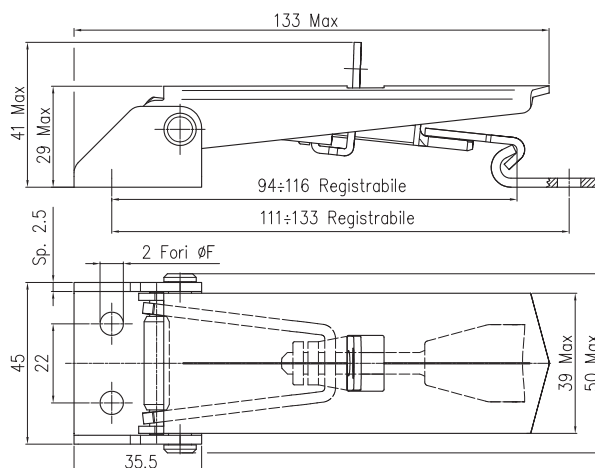
Latch	Strike	Ø holes
TLS46.1*	PG18.1*	6,5
TLS46.50*	PG18.5*	9,0

Material and Finishing	Code
Steel, zinc plated Cr6 free	AA
Stainless steel	BP

Insert Material/Finishing code * into Latch/Strike Part No.

TLL46 - Latch adjustable with hasp

Max. working strenght 4200N



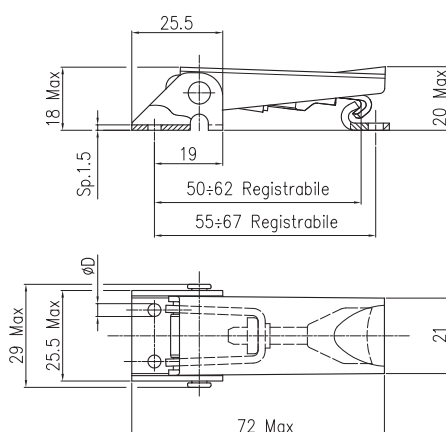
Latch	Strike	Ø holes
TLL46.1*	PG18.1*	6,5
TLL46.50*	PG18.5*	9,0

Material and Finishing	Code
Steel, zinc plated Cr6 free	AA
Stainless steel	BP

Insert Material/Finishing code * into Latch/Strike Part No.

TL51 - Latch adjustable

Max. working strenght 1000N



Latch	Strike	Ø holes
TL51.1*	PG51.1*	3,6
TL51.2*	PG51.2*	welding
TL51.5*	PG51.5*	4,2

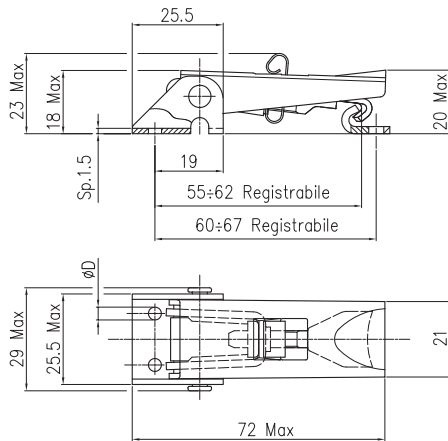
Material and Finishing	Code
Steel, zinc plated Cr6 free	AZ
Stainless steel	BP

Insert Material/Finishing code * into Latch/Strike Part No.

TLS51 / TLL51 / TL52

TLS51 - Latch adjustable with secondary lock

Max. working strenght 1000N



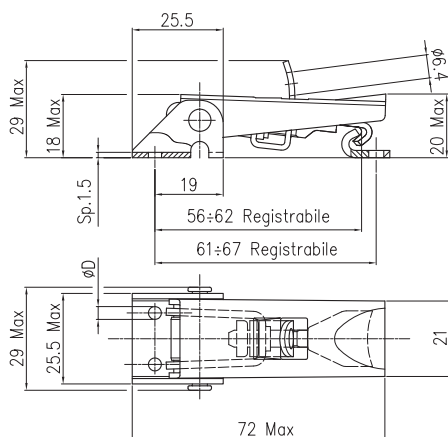
Latch	Strike	Ø holes
TLS51.1*	PG51.1*	3,6
TLS51.2*	PG51.2*	welding
TLS51.5*	PG51.5*	4,2

Material and Finishing	Code
Steel, zinc plated Cr6 free	AZ
Stainless steel	BP

Insert Material/Finishing code * into Latch/Strike Part No.

TLL51 - Latch adjustable with hasp

Max. working strenght 1000N



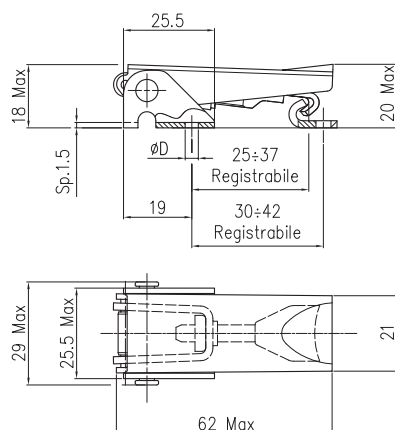
Latch	Strike	Ø holes
TLL51.1*	PG51.1*	3,6
TLL51.2*	PG51.2*	welding
TLL51.5*	PG51.5*	4,2

Material and Finishing	Code
Steel, zinc plated Cr6 free	AZ
Stainless steel	BP

Insert Material/Finishing code * into Latch/Strike Part No.

TL52 - Latch adjustable

Max. working strenght 1000N



Latch	Strike	Ø holes
TL52.1*	PG51.1*	3,6
TL52.2*	PG51.2*	welding
TL52.5*	PG51.5*	4,2

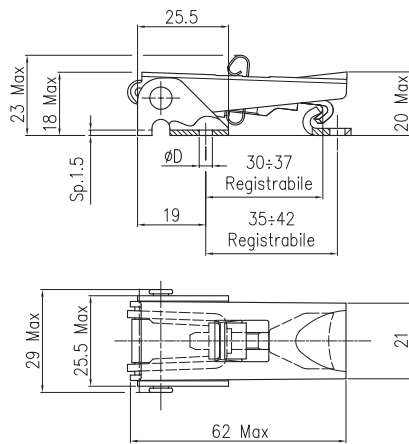
Material and Finishing	Code
Steel, zinc plated Cr6 free	AZ
Stainless steel	BP

Insert Material/Finishing code * into Latch/Strike Part No.

TLS52 / TLL52 / TLS605

TLS52 - Latch adjustable with secondary lock

Max. working strenght 1000N



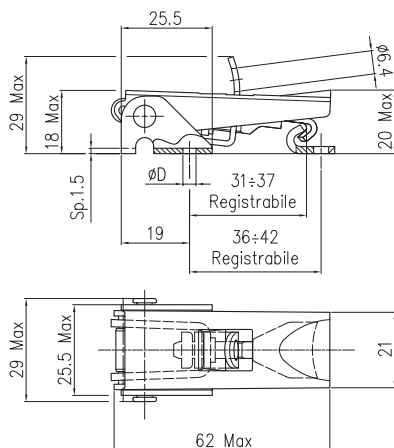
Latch	Strike	Ø holes
TLS52.1*	PG51.1*	3,6
TLS52.2*	PG51.2*	welding
TLS52.5*	PG51.5*	4,2

Material and Finishing	Code
Steel, zinc plated Cr6 free	AZ
Stainless steel	BP

Insert Material/Finishing code * into Latch/Strike Part No.

TLL52 - Latch adjustable with hasp

Max. working strenght 1000N

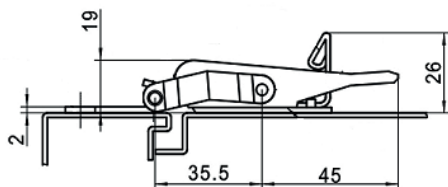


Latch	Strike	Ø holes
TLL52.1*	PG51.1*	3,6
TLL52.2*	PG51.2*	welding
TLL52.5*	PG51.5*	4,2

Material and Finishing	Code
Steel, zinc plated Cr6 free	AZ
Stainless steel	BP

Insert Material/Finishing code * into Latch/Strike Part No.

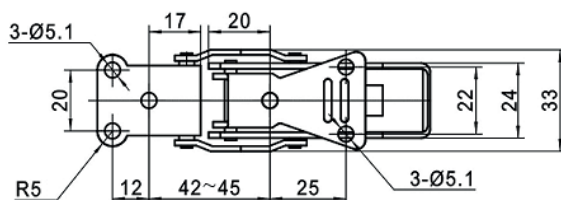
TLS605 - Latch pre-loaded with secondary lock



Latch	Strike	Ø holes
TLS605.1*	PG605.1*	5,1

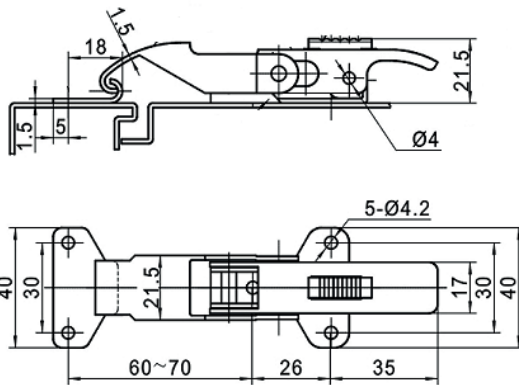
Material and Finishing	Code
Stainless steel	BP

Insert Material/Finishing code * into Latch/Strike Part No.



TLS606 / TL609 / TL603

TLS606 - Latch adjustable pre-load with secondary lock

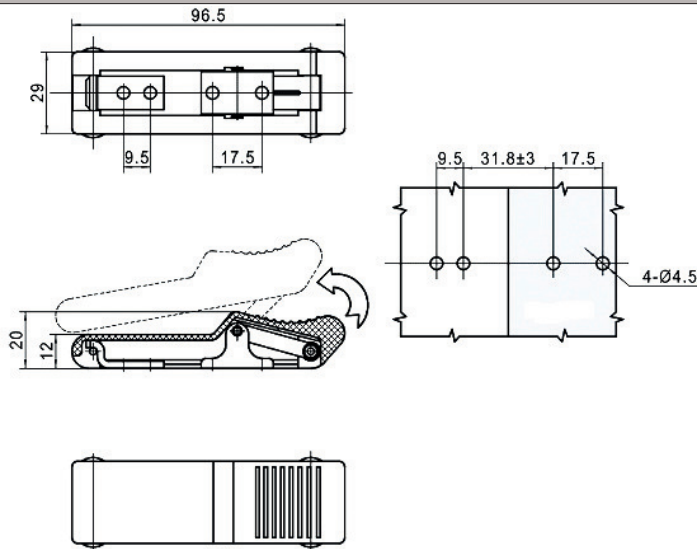


Latch	Strike	Ø holes
TLS606.1*	PG606.1*	4,2

Material and Finishing	Code
Steel, zinc plated Cr6 free	AZ

Insert Material/Finishing code * into Latch/Strike Part No.

TL609 - Latch

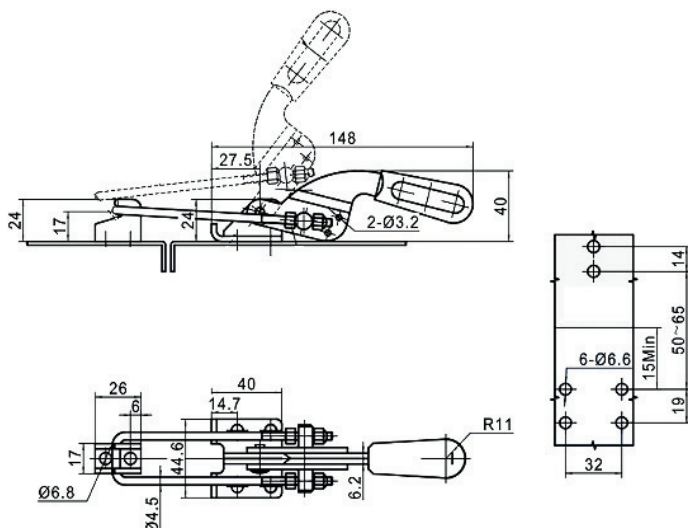


Latch	Strike	Ø holes
TL609.1*	PG609.1*	4,5

Material and Finishing	Code
Rubber body, base and strike Aisi 304	PN

Insert Material/Finishing code * into Latch/Strike Part No.

TL603 - Latch



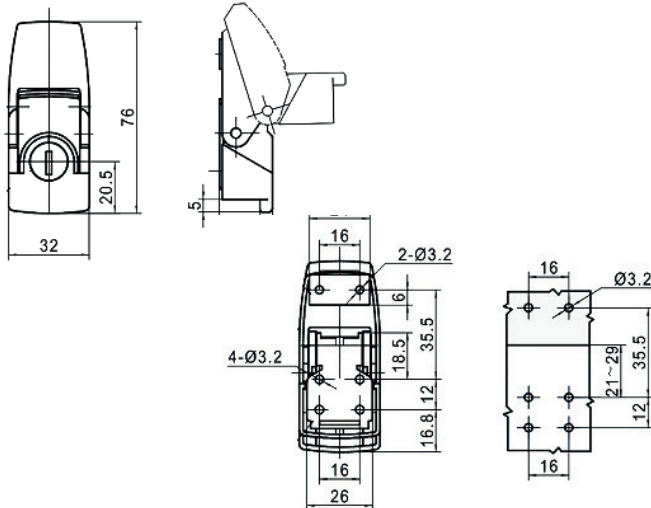
Latch	Strike	Ø holes
TL603.1*	PG603.1*	6,6

Material and Finishing	Code
Stainless steel	BP

Insert Material/Finishing code * into Latch/Strike Part No.

TLZ600 / TLZ601 / TLZ604

TLZ600 - Latch with key-lock

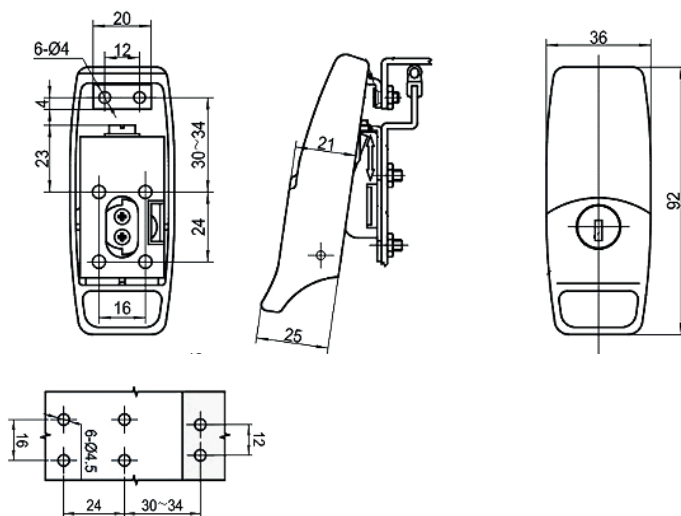


Latch	Strike	Ø holes
TLZ600.1*	PG600.1*	3,2
TL600.1* (without lock)	PG600.1*	3,2

Material and Finishing	Code
Zinc alloy body bright chrome plated, base and strike stainless steel	AC

Insert Material/Finishing code * into Latch/Strike Part No.

TLZ601 - Latch with key-lock

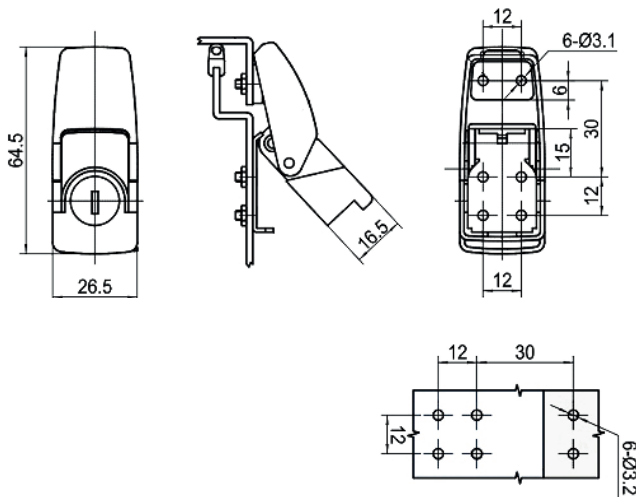


Latch	Strike	Ø holes
TLZ601.1*	PG601.1*	4,5

Material and Finishing	Code
Zinc alloy body bright black powder coated, base and strike stainless steel	BK

Insert Material/Finishing code * into Latch/Strike Part No.

TLZ604 - Latch with key-lock



Latch	Strike	Ø holes
TLZ604.1*	PG604.1*	3,1
TL604.1* (without lock)	PG604.1*	3,1

Material and Finishing	Code
Zinc alloy body black chrome plated, base and strike stainless steel	CK

Insert Material/Finishing code * into Latch/Strike Part No.