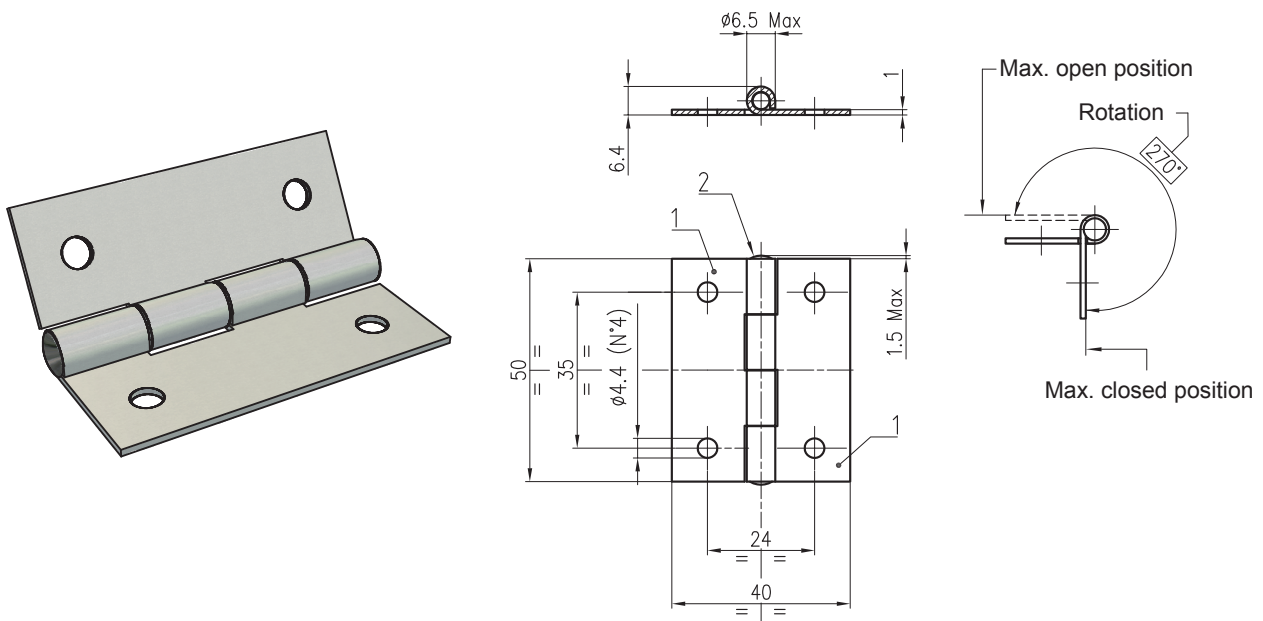
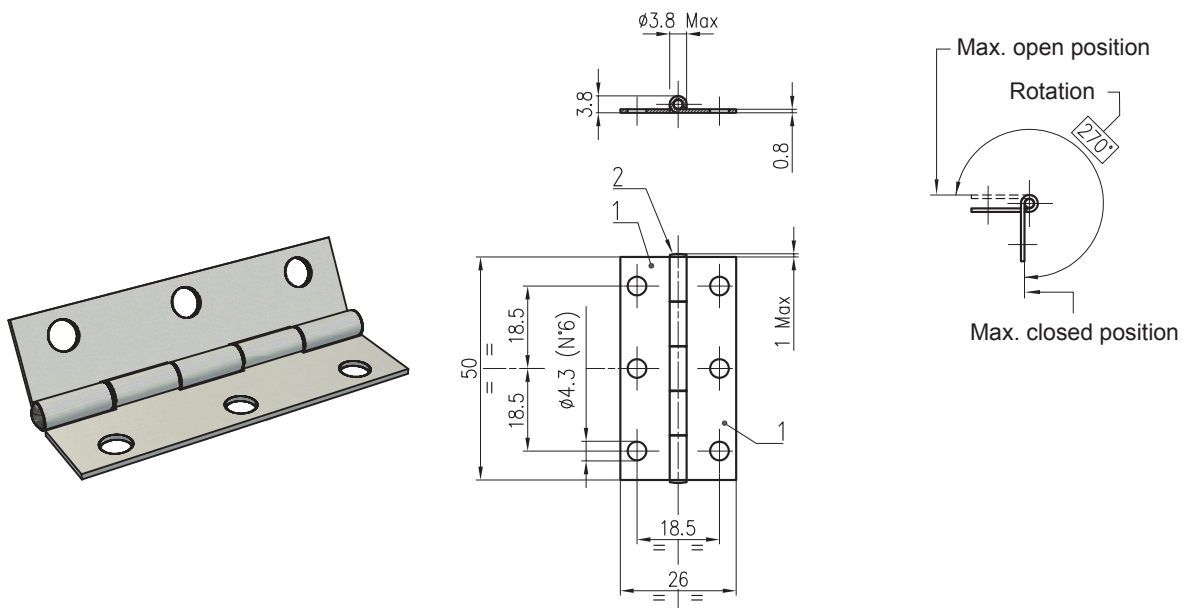


HNG.4050.AZ



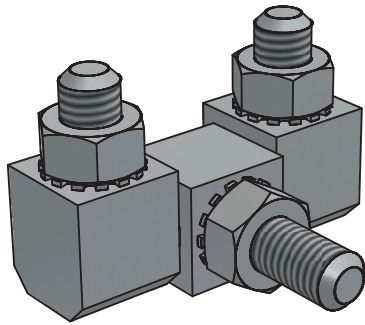
Ref	Part description	Material - Finishing
1	Flange, thickness 1,0 mm (2)	Fe360 - White zinc Cr6 free
2	Riveted pin	Steel - White zinc Cr6 free

HNG.2650.AZ

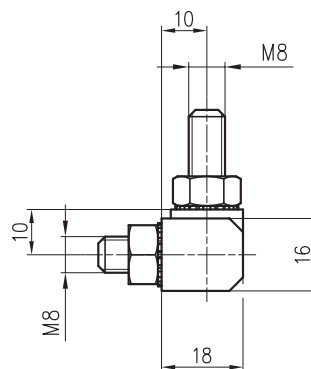
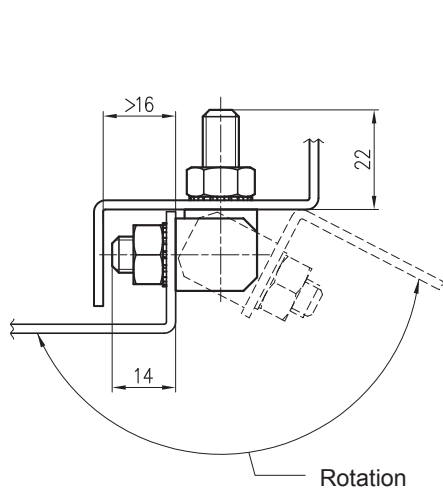
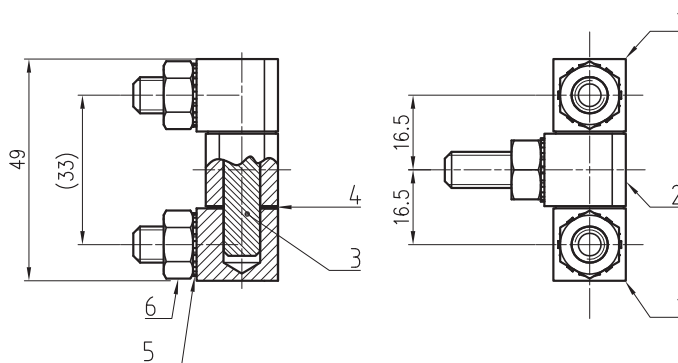
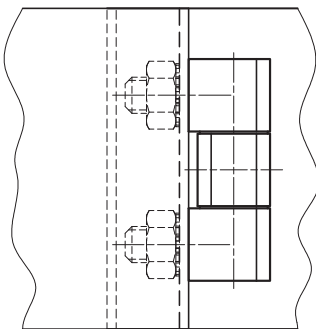


Ref	Part description	Material - Finishing
1	Flange, thickness 0,8 mm (2)	Fe360 - White zinc Cr6 free
2	Riveted pin	Steel - White zinc Cr6 free

HNG.0334.AZ

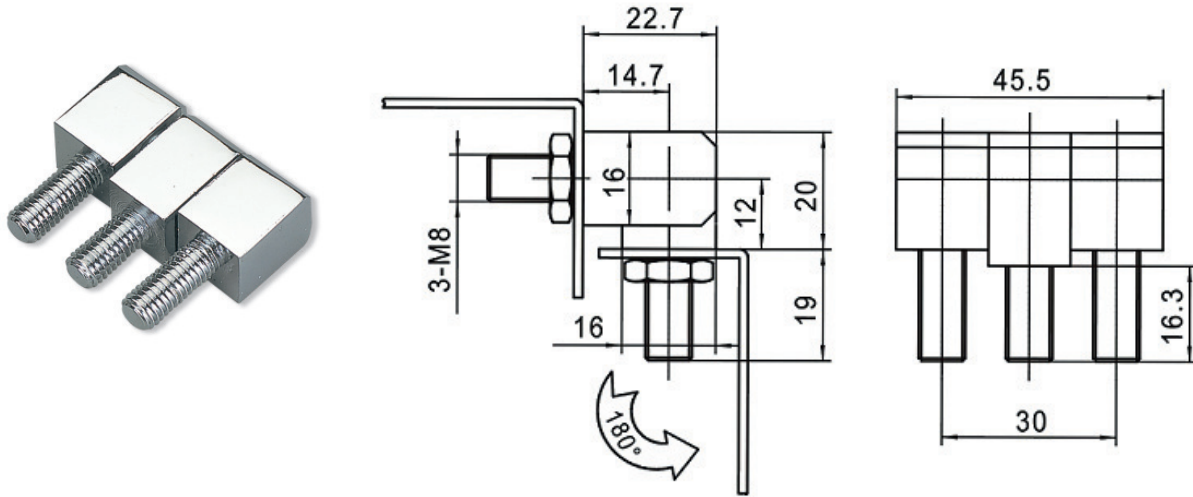


Installation example



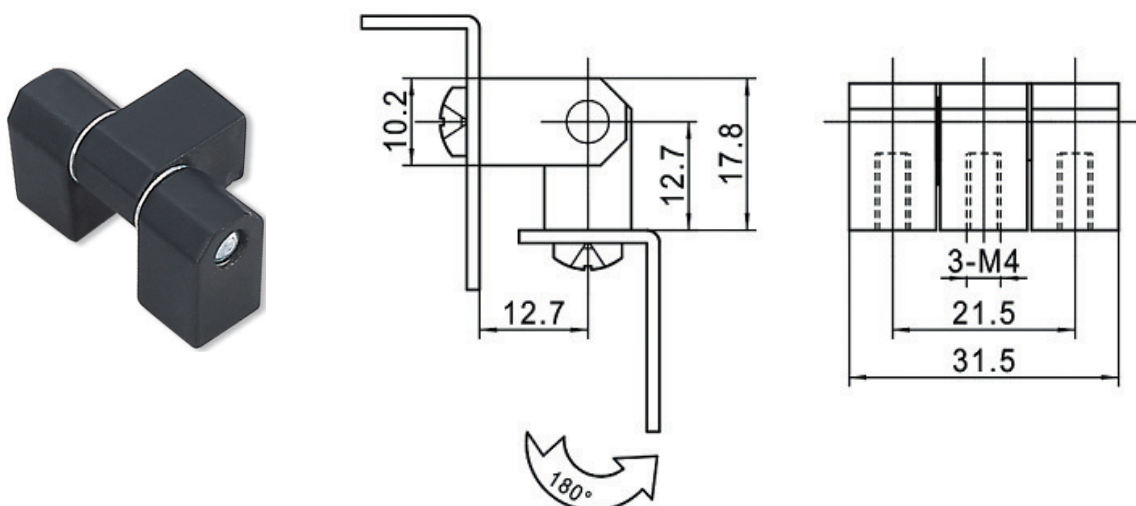
Ref	Part description	Material - Finishing
1	Flange with stud M8X14	Steel - White zinc Cr6 free
2	Flange with stud M8X20	Steel - White zinc Cr6 free
3	Rotation pin	Stainless steel
4	Spacer	Stainless steel
5	Washer M8	Steel - White zinc Cr6 free
6	Exagonal nut M8	Steel - White zinc Cr6 free

HNG.206.3



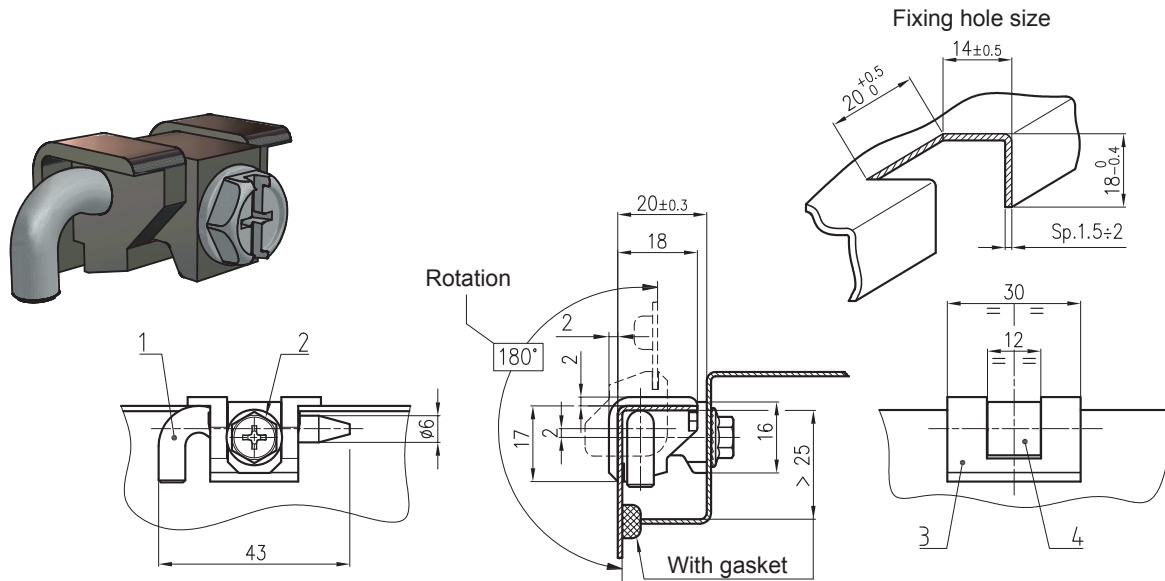
Ref	Part description	Material - Finishing
1	Hinge	Steel - Bright chrome
2	Stud	Steel - White zinc Cr6 free

HNG.206.4



Ref	Part description	Material - Finishing
1	Hinge	Zinc alloy - Epoxy black
2	Stud	Steel - White zinc Cr6 free

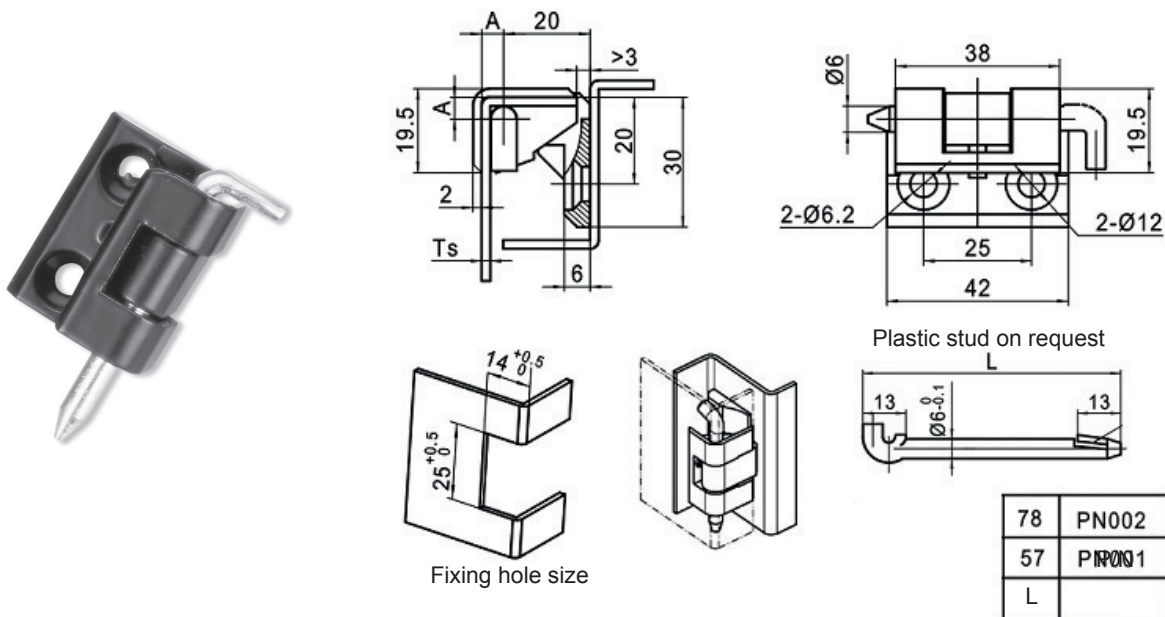
HNG.097MP.*



Insert * material "code" into hinge part number

Ref	Part description	Material - Finishing (AC)	Material - Finishing (BK)
1	Fixing stud	Steel 4.8 - White zinc Cr6 free	Steel 4.8 - White zinc Cr6 free
2	Screw	Steel 4.8 - White zinc Cr6 free	Steel 4.8 - White zinc Cr6 free
3	Base	Zinc alloy - Bright chrome	Zinc alloy - Epoxy black
4	Bracket	Zinc alloy - Bright chrome	Zinc alloy - Epoxy black

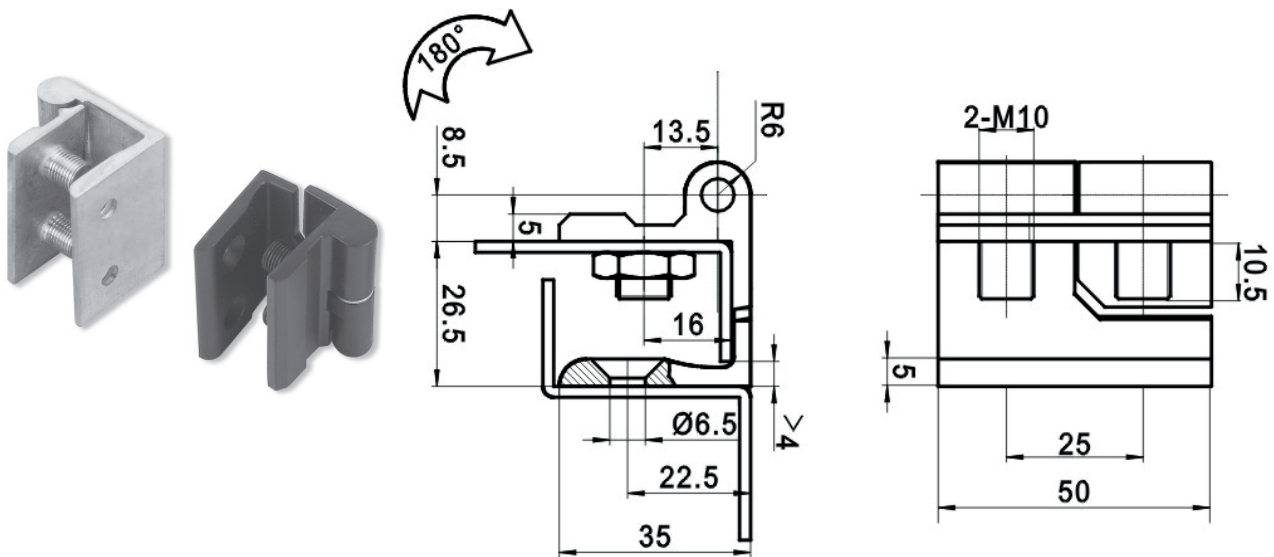
HNG.212.*



Hinge part number	Ts	A
HNG.212.1	2	5,1
HNG.212.2	3	6,1
HNG.212.3	1,5	4,6

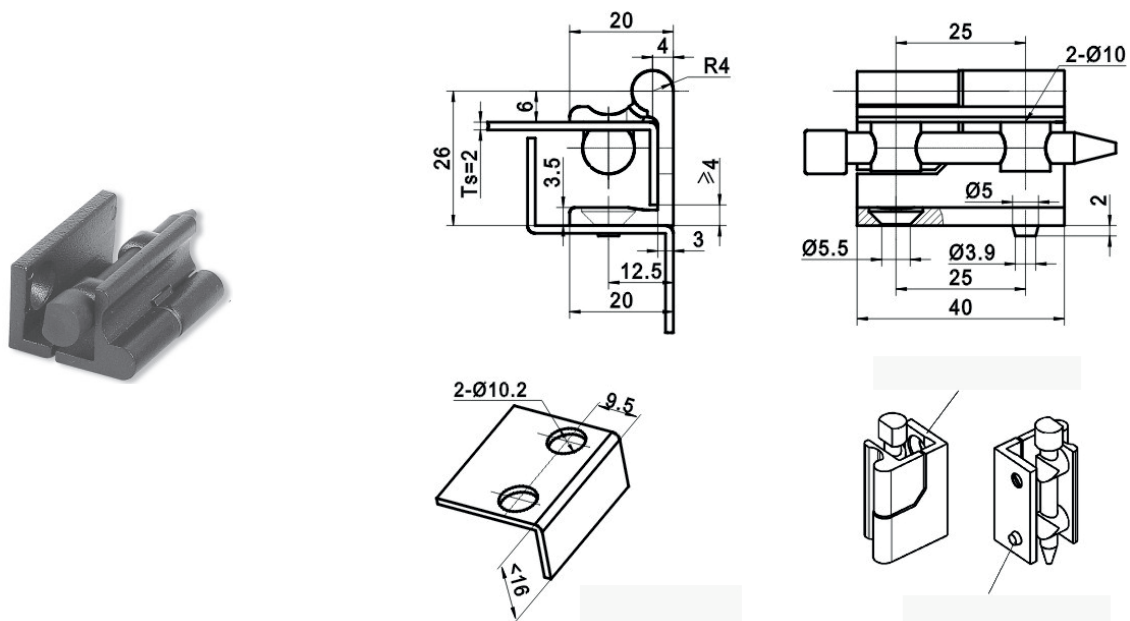
Ref	Part description	Material - Finishing
1	Hinge	Zinc alloy - Epoxy black
2	Stud	Steel - Nickel plated

HNG.205.1*



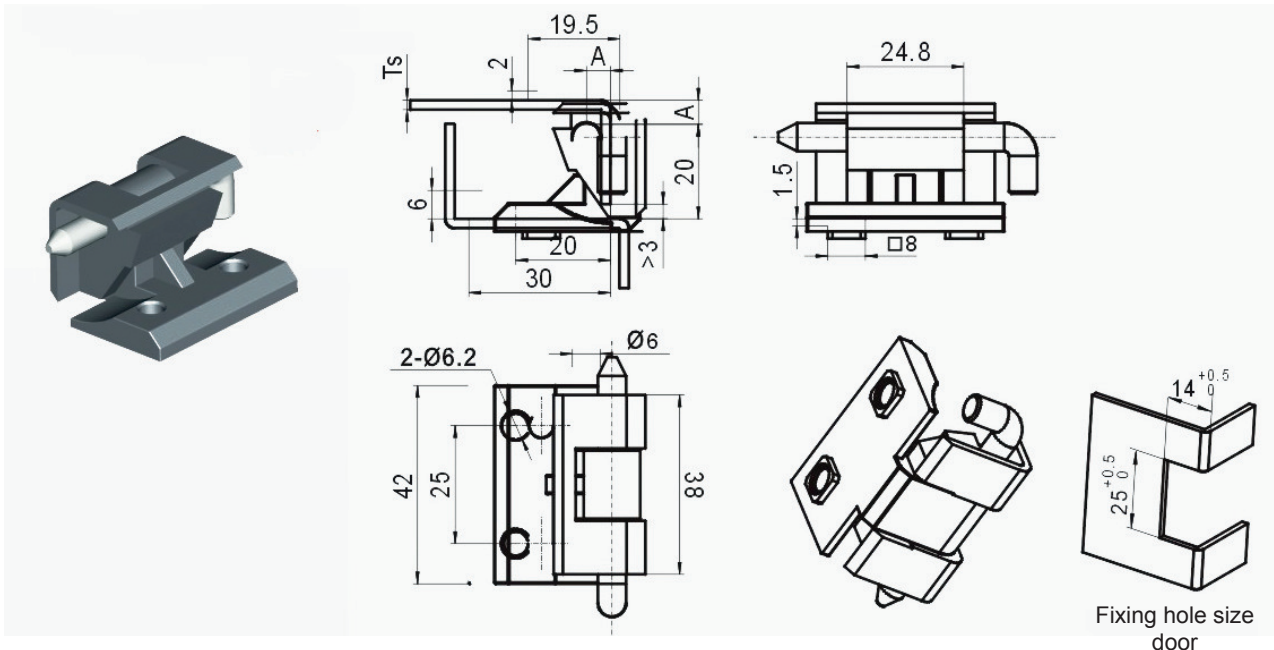
Hinge part number	Type	Material - Finishing
HNG.205.1Z	Left	Zinc alloy - Epoxy black
HNG.205.1Y	Right	Zinc alloy - Epoxy black

HNG.205.2*



Hinge part number	Type	Material - Finishing
HNG.205.2Z	Left	Zinc alloy - Epoxy black
HNG.205.2Y	Right	Zinc alloy - Epoxy black

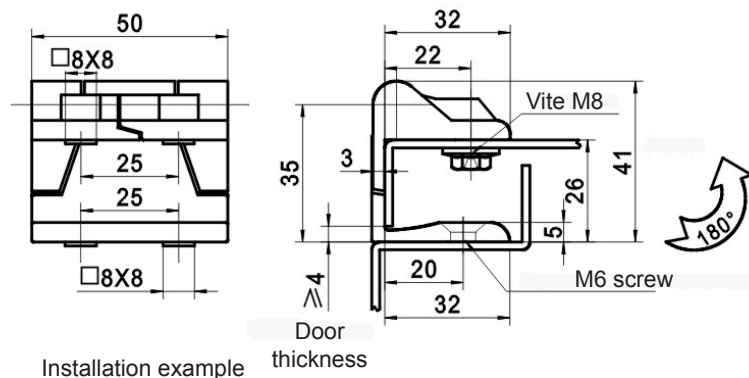
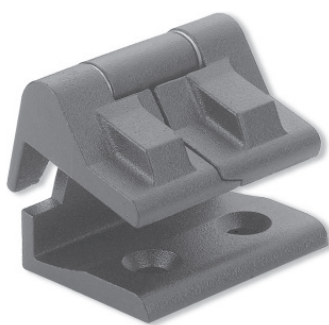
HNG.212.3B.*



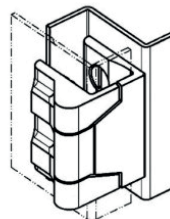
Hinge part number	Ts	A
HNG.212.3B.1	1,5	4,6
HNG.212.3B.2	3	6,1
HNG.212.3B.3	2	5,1

Ref	Part description	Material - Finishing
1	Hinge	Zinc alloy - Epoxy black
2	Stud	Steel - Nickel plated

HNG.213.2

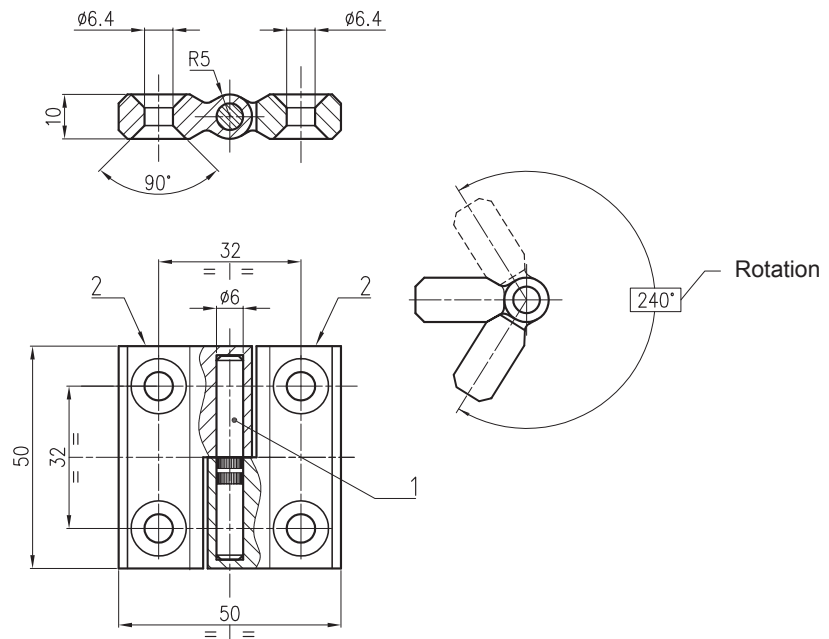


Installation example



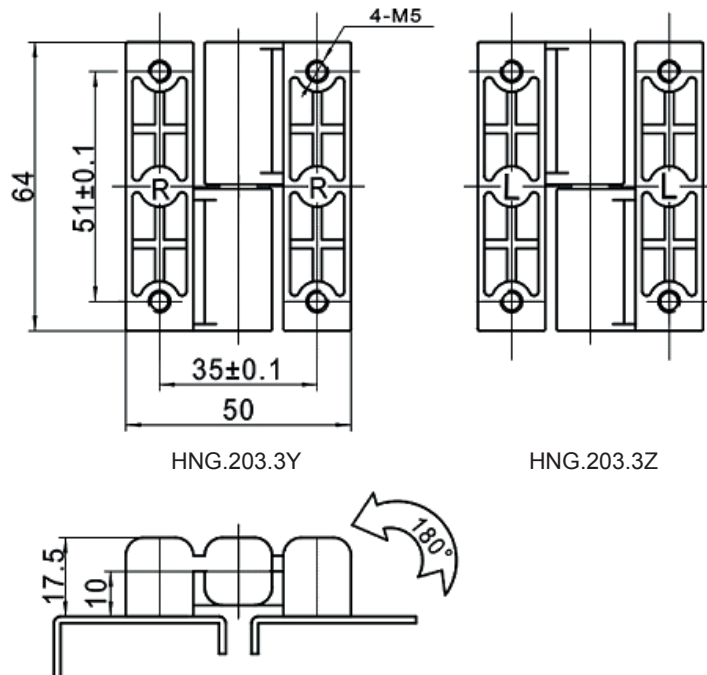
Ref	Part description	Material - Finishing
1	Hinge	Zinc alloy - Bright chrome
2	Stud	Steel - White zinc Cr6 free

HNG.218.9119.BP



Ref	Part description	Material - Finishing
1	Rotation pin	AISI303
2	Flange (2)	AISI304 - Polished

HNG.203.3*

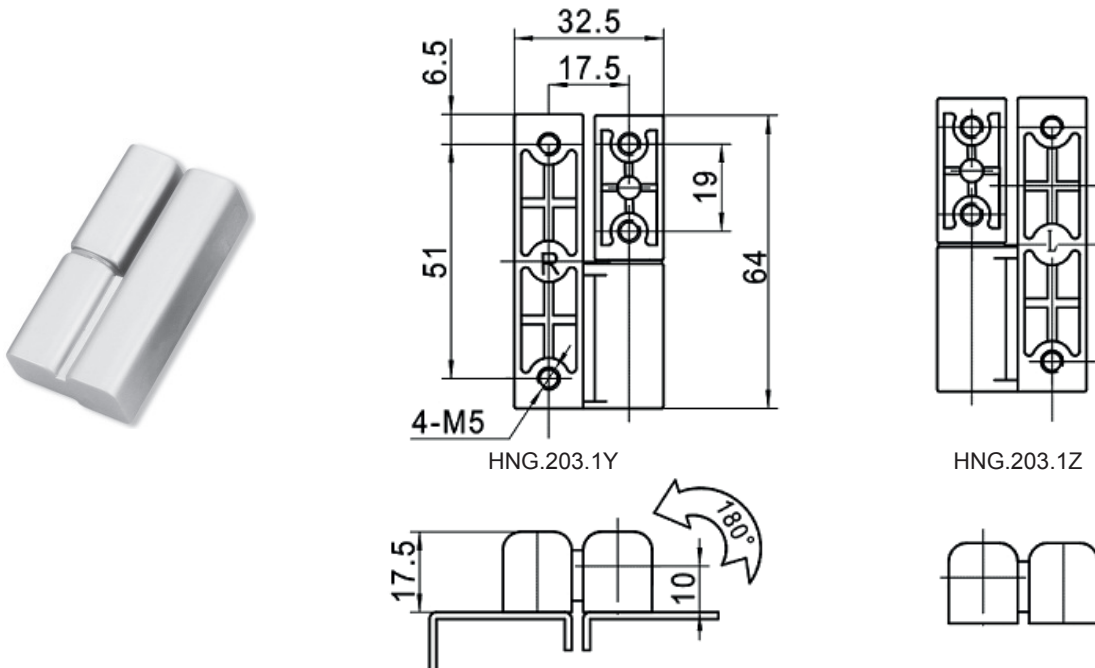


HNG.203.3Y

HNG.203.3Z

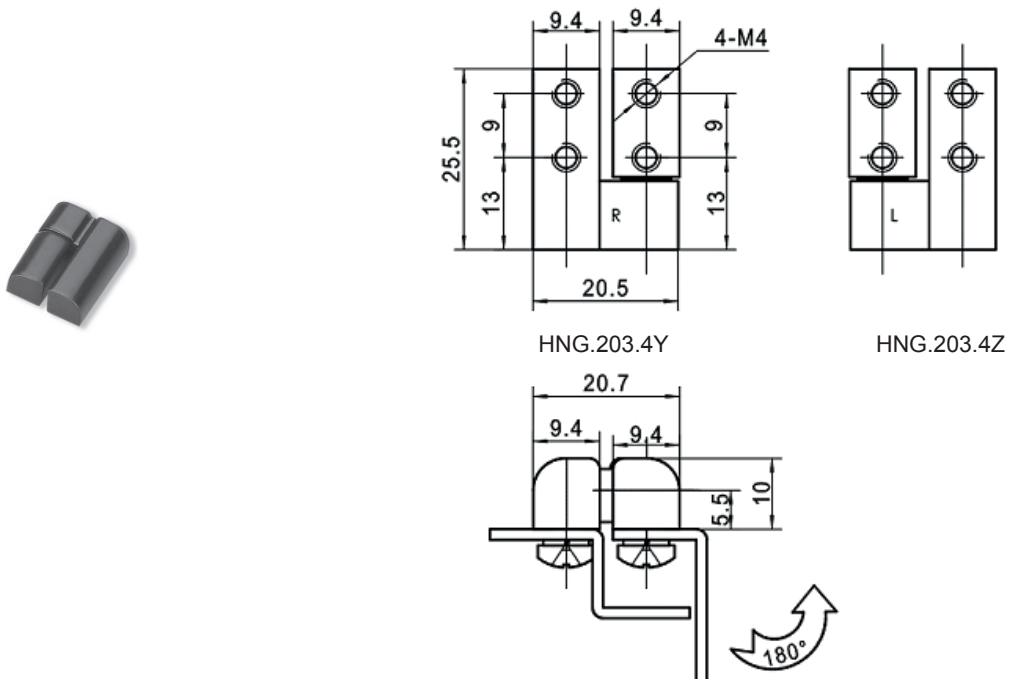
Hinge part number	Rotation	Ref	Part description	Material - Finishing
HNG.203.3Z	Left	1	Hinge	Zinc alloy - Grey chrome
HNG.203.3Y	Right	2	Stud	Steel - White zinc Cr6 free
		3	Washer	Nylon

HNG.203.1*



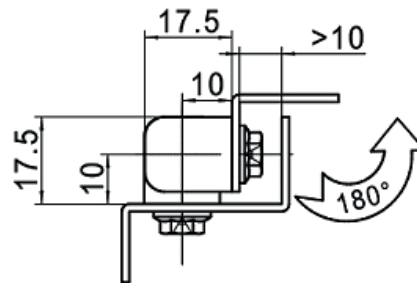
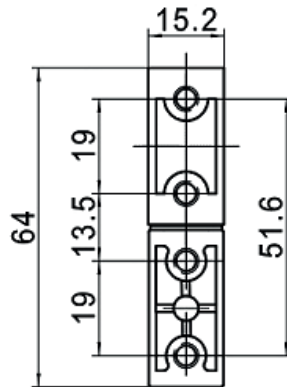
Hinge part number	Rotation	Ref	Part description	Material - Finishing
HNG.203.1Z	Left	1	Hinge	Zinc alloy - Grey chrome
HNG.203.1Y	Right	2	Stud	Steel - White zinc Cr6 free
		3	Washer	Nylon

HNG.203.4*



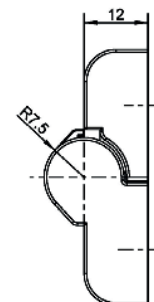
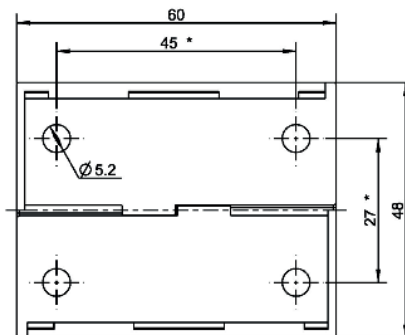
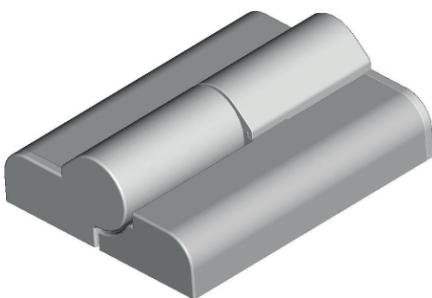
Hinge part number	Rotation	Ref	Part description	Material - Finishing
HNG.203.4Z	Left	1	Hinge	Zinc alloy - Epoxy black
HNG.203.4Y	Right	2	Stud	Steel - White zinc Cr6 free
		3	Washer	Nylon

HNG.203.2



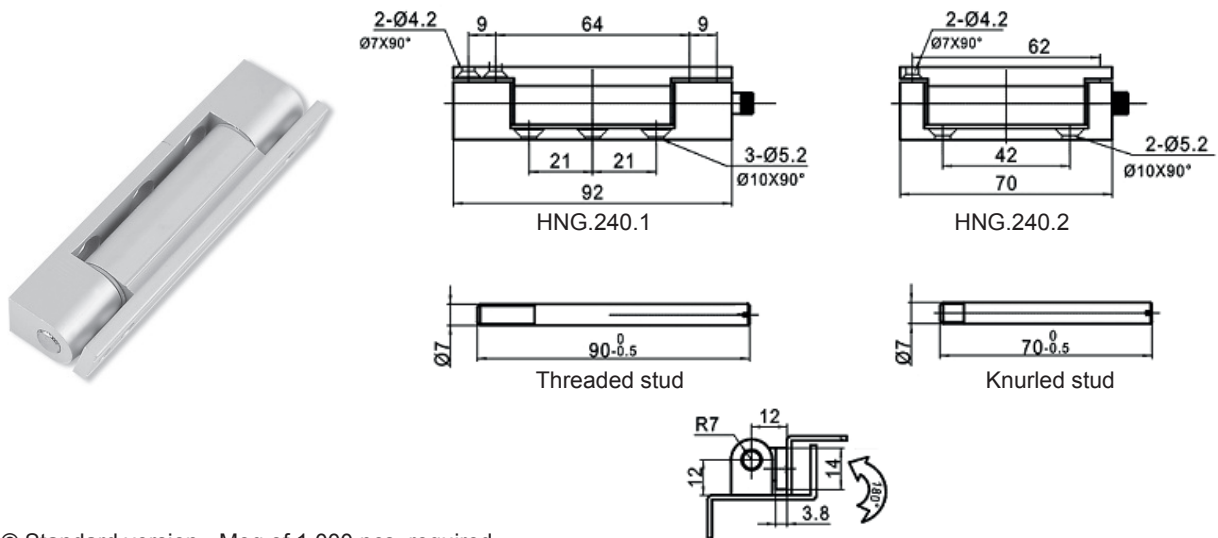
Ref	Part description	Material - Finishing
1	Hinge	Zinc alloy - Epoxy black

HNG.299



Ref	Part description	Material - Finishing
1	Hinge	Zinc alloy - Bright chrome

HNG.240.*

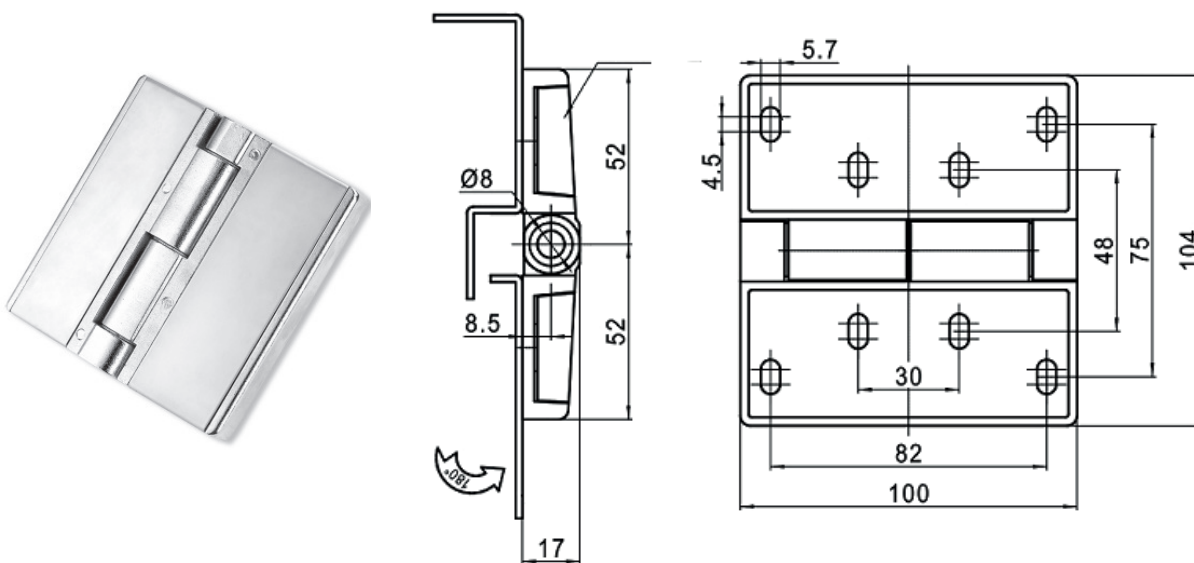


© Standard version - Moq of 1.000 pcs. required for non standard version

Hinge part number	Stud type
HNG.240.1 ©	Knurled
HNG.240.1D	Threaded
HNG.240.2 ©	Knurled
HNG.240.2D	Threaded

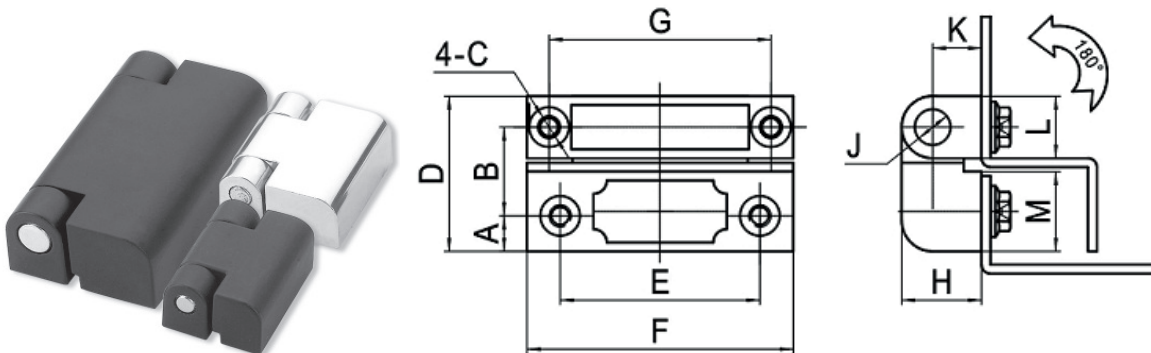
Ref	Part description	Material - Finishing
1	Hinge	Alluminum - Epoxy black
2	Stud	Steel - Nickel plated

HNG.251



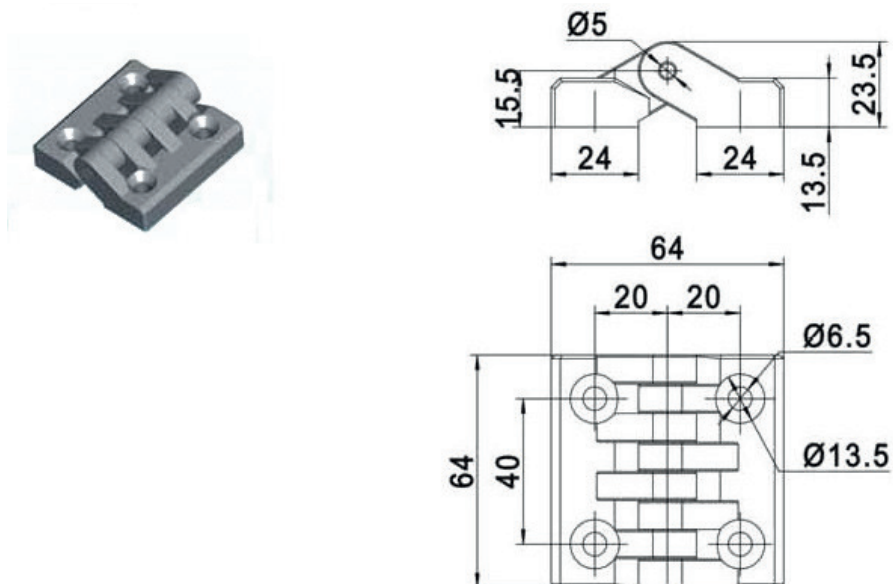
Ref	Part description	Material - Finishing
1	Hinge	Zinc alloy - Bright chrome
2	Stud	Stainless steel
3	Cover	Stainless steel

HNG.219.*



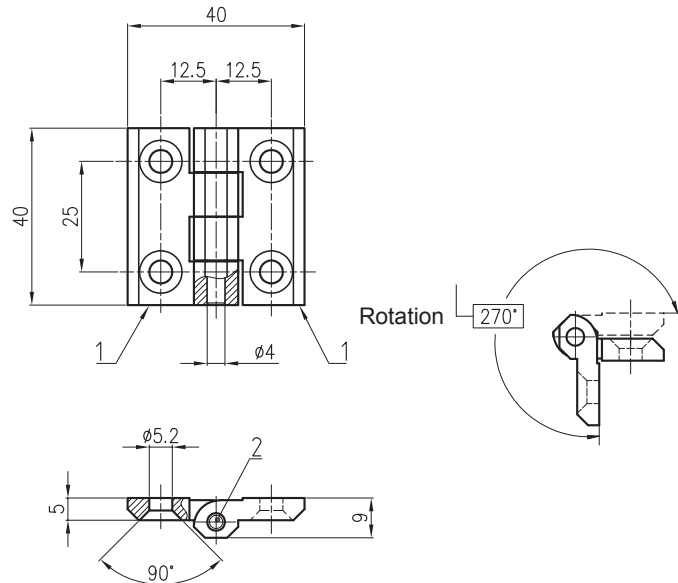
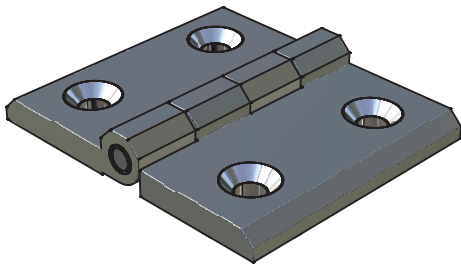
Hinge part number	A	B	C	D	E	F	G	H	J	K	L	M	Material - Finishing
HNG.219.1	8	20	M5	35	45	60	50	18	Ø 8	11	14	18	Zinc alloy - Epoxy black
HNG.219.1R	8	20	M5	35	45	60	50	18	Ø 8	11	14	18	Zinc alloy - Epoxy black
HNG.219.2	4	13	M4	22	22	30	22	13	Ø 5	8	10	9	Zinc alloy - Epoxy black
HNG.219.2R	4	13	M4	22	22	30	22	13	Ø 5	8	10	9	Zinc alloy - Epoxy black
HNG.219.3	4	18,5	M4	27,5	22	30	22	13	Ø 5	8	10	14,5	Zinc alloy - Epoxy black

HNG.295



Ref	Part description	Material - Finishing
1	Hinge	Black plastic
2	Stud	Steel - White zinc Cr6 free

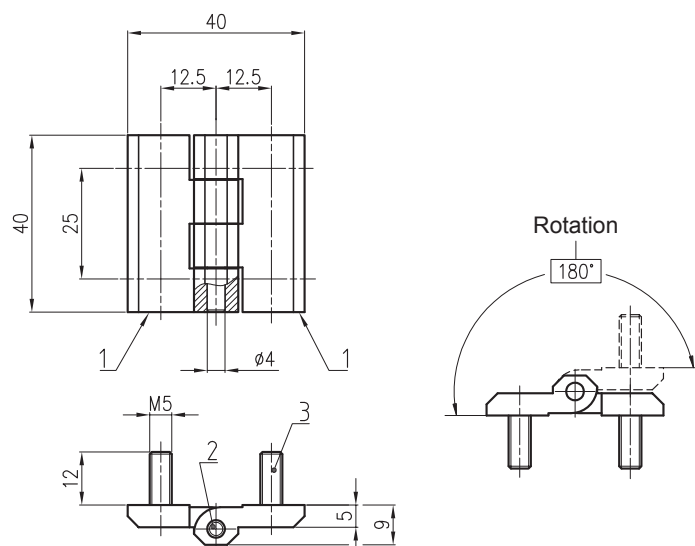
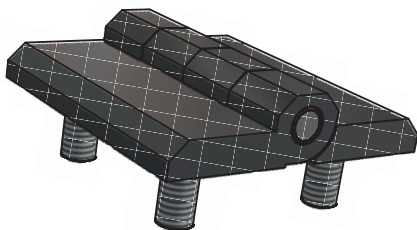
HNG.4040.*



Insert * material "code" into hinge part number

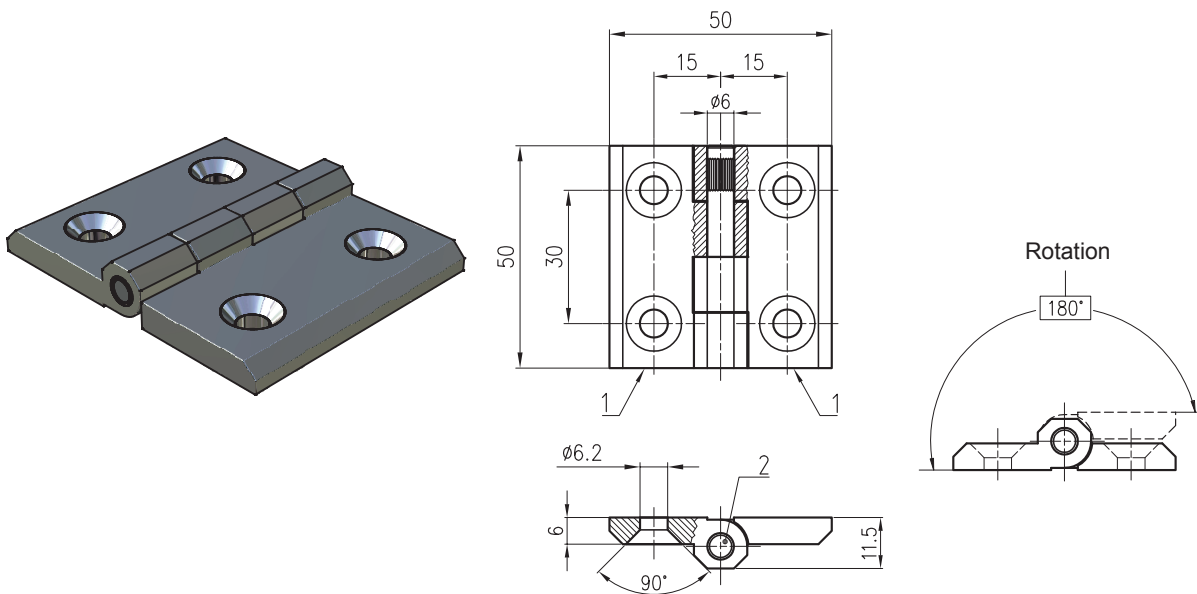
Ref	Part description	Material - Finishing (AC)	Material - Finishing (BK)	Material - Finishing (BP)
1	Flange (2)	Zinc alloy - Bright chrome	Zinc alloy - Black powder coated	AISI304

HNG.4040P.BK



Ref	Part description	Material - Finishing
1	Flange with M6 stud (2)	Zinc alloy - Black powder coated
2	Rotation pin	AISI303
3	M6 threaded stud	AISI304

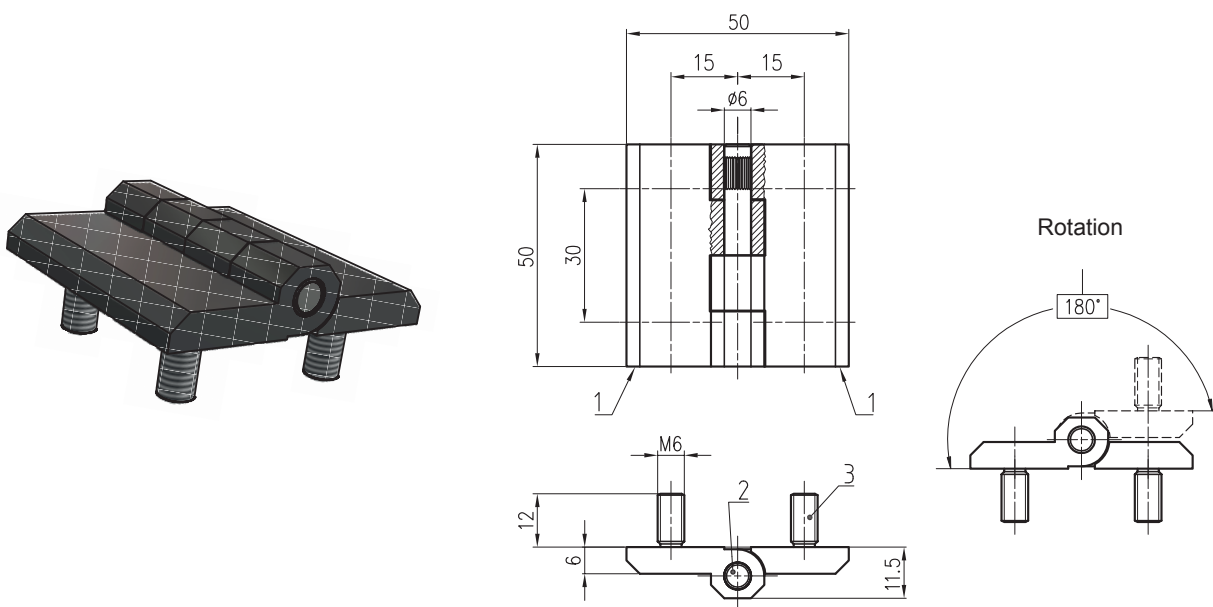
HNG.5050.*



Insert * material "code" into hinge part number

Ref	Part description	Material - Finishing (AC)	Material - Finishing (BK)	Material - Finishing (BP)
1	Flange (2)	Zinc alloy - Bright chrome	Zinc alloy - Black powder coated	AISI304

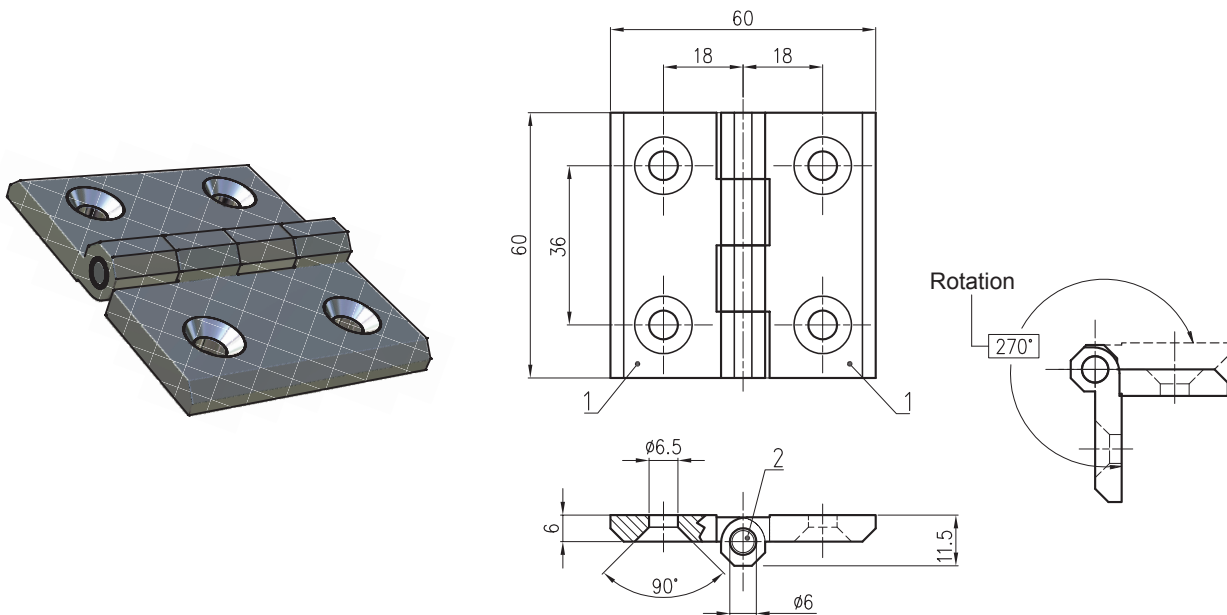
HNG.5050P.*



Insert * material "code" into hinge part number

Ref	Part description	Material - Finishing (AC)	Material - Finishing (BK)
1	Flange with M6 stud (2)	Zinc alloy - Bright chrome	Zinc alloy - Black powder coated
2	Rotation pin	AISI303	AISI303
3	M6 threaded stud	AISI304	AISI304

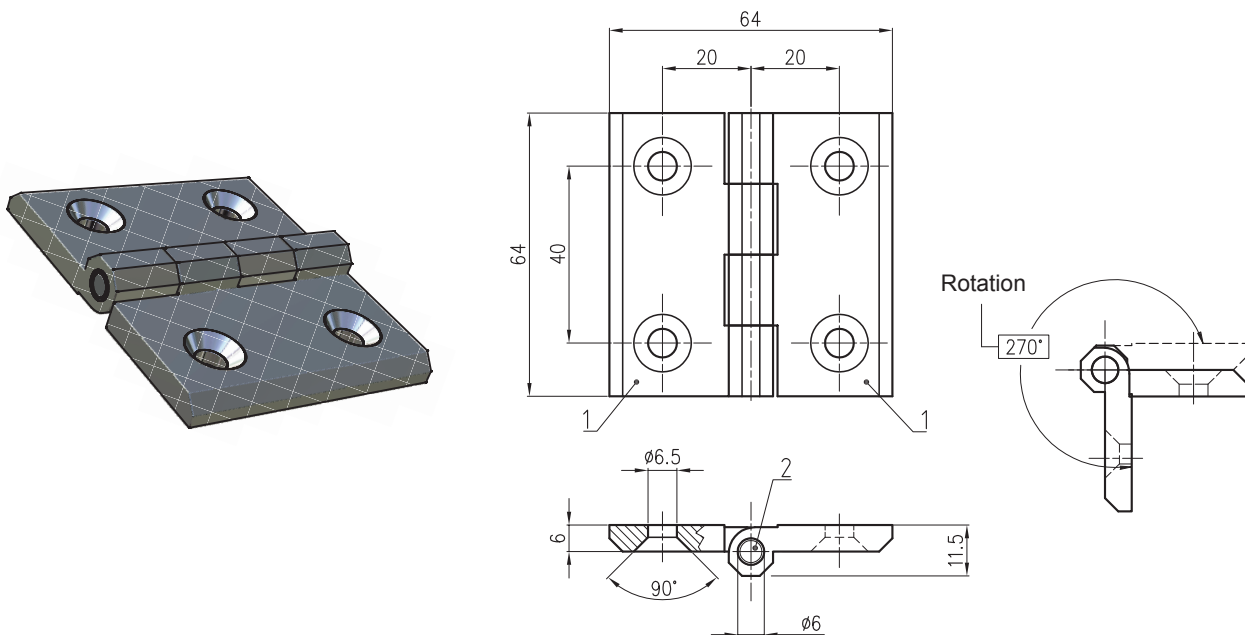
HNG.6060.*



Insert * material "code" into hinge part number

Ref	Part description	Material - Finishing (AC)	Material - Finishing (BK)
1	Flange (2)	Zinc alloy - Bright chrome	Zinc alloy - Black powder coated
2	Rotation pin	AISI303	AISI303

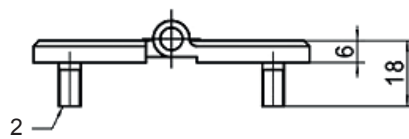
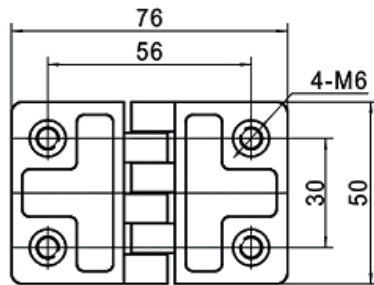
HNG.6464.*



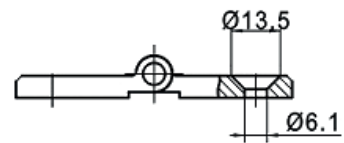
Insert * material "code" into hinge part number

Ref	Part description	Material - Finishing (AC)	Material - Finishing (BK)
1	Flange (2)	Zinc alloy - Bright chrome	Zinc alloy - Black powder coated
2	Rotation pin	AISI303	AISI303

HNG.214.*



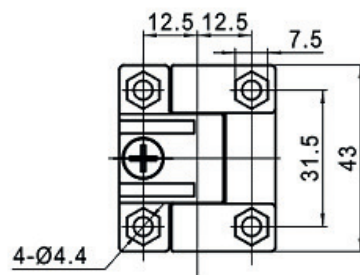
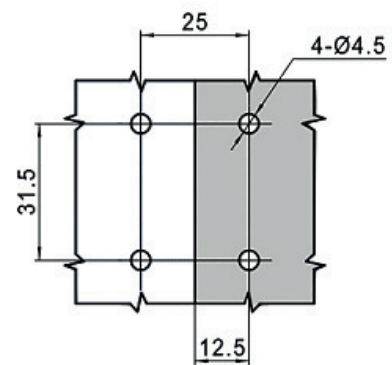
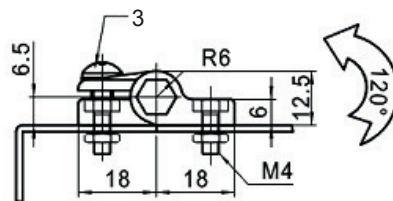
HNG.214.1



HNG.214.2

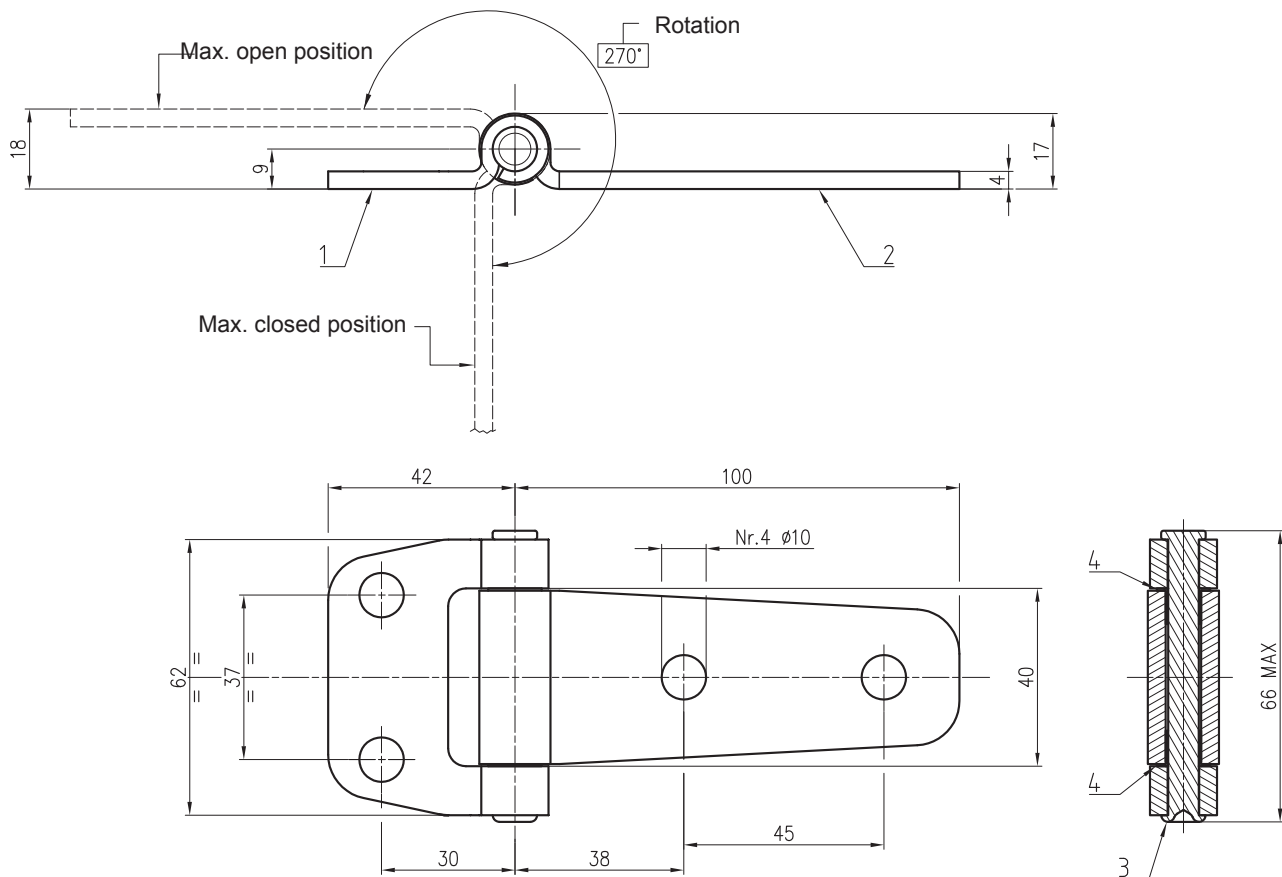
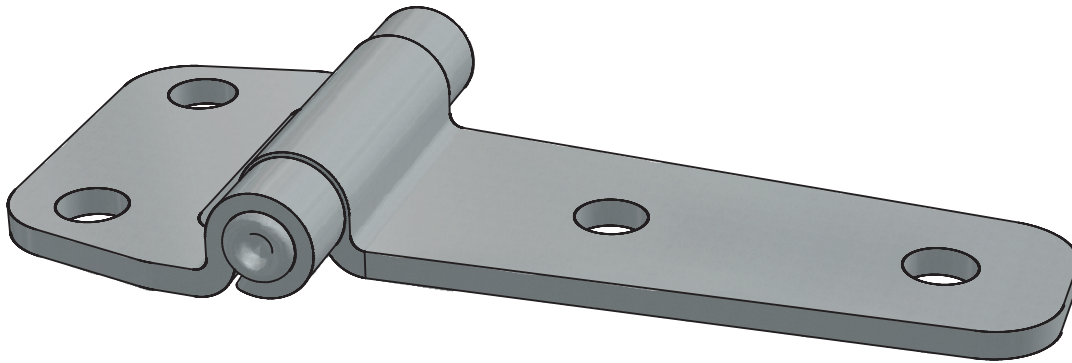
Hinge part number	Type	Ref	Part description	Material - Finishing
HNG.214.1	Threaded studs	1	Hinge	Zinc alloy - Epoxy black
HNG.214.2	Holes	2	Stud	Steel - Epoxy black

HNG.272



Ref	Part description	Material - Finishing
1	Hinge	Black plastic
2	Stud	Black plastic
3	Screws and nuts	Steel - White zinc Cr6 free

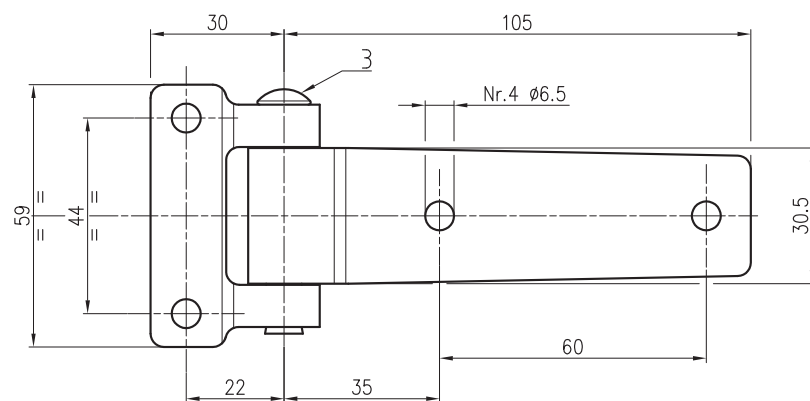
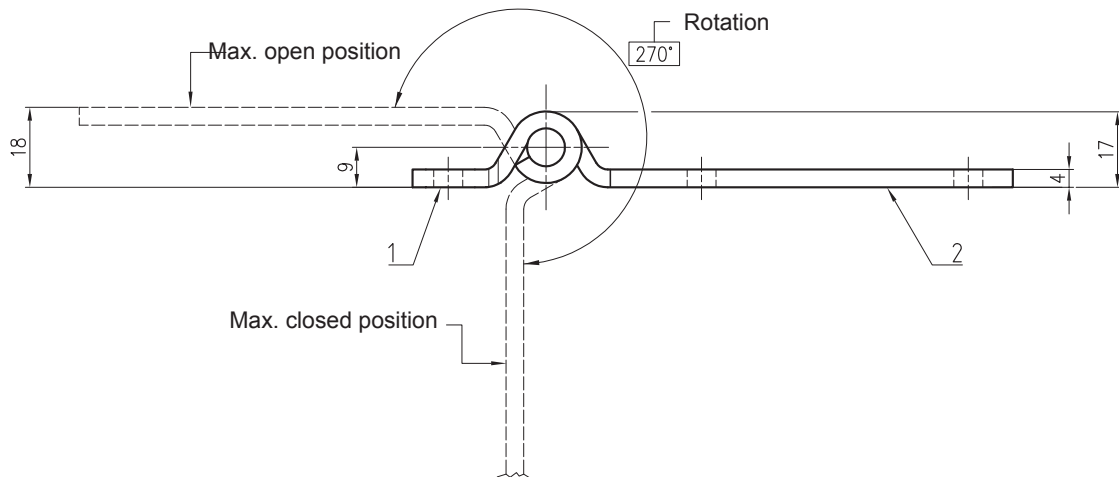
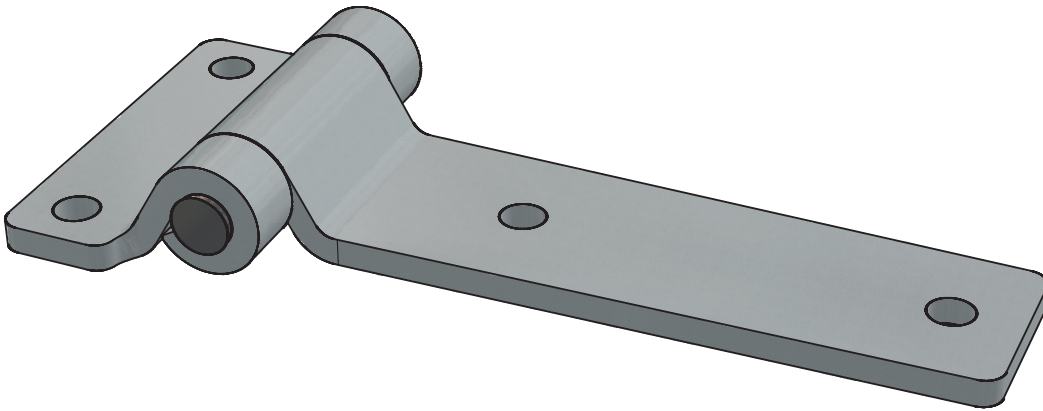
HNG.42100.* HINGE WITH FRICTIONED ROTATION



Insert * material "code" into hinge part number

Ref	Part description	Material - Finishing (AZ)	Material - Finishing (BK)
1	Short flange	Fe360 - White zinc Cr6 free	Fe360 - White zinc Cr6 free
2	Long flange	Fe360 - White zinc Cr6 free	Fe360 - White zinc Cr6 free
3	Stud	AISI304	AISI304
4	Grommet (2)	Poliammide	Poliammide

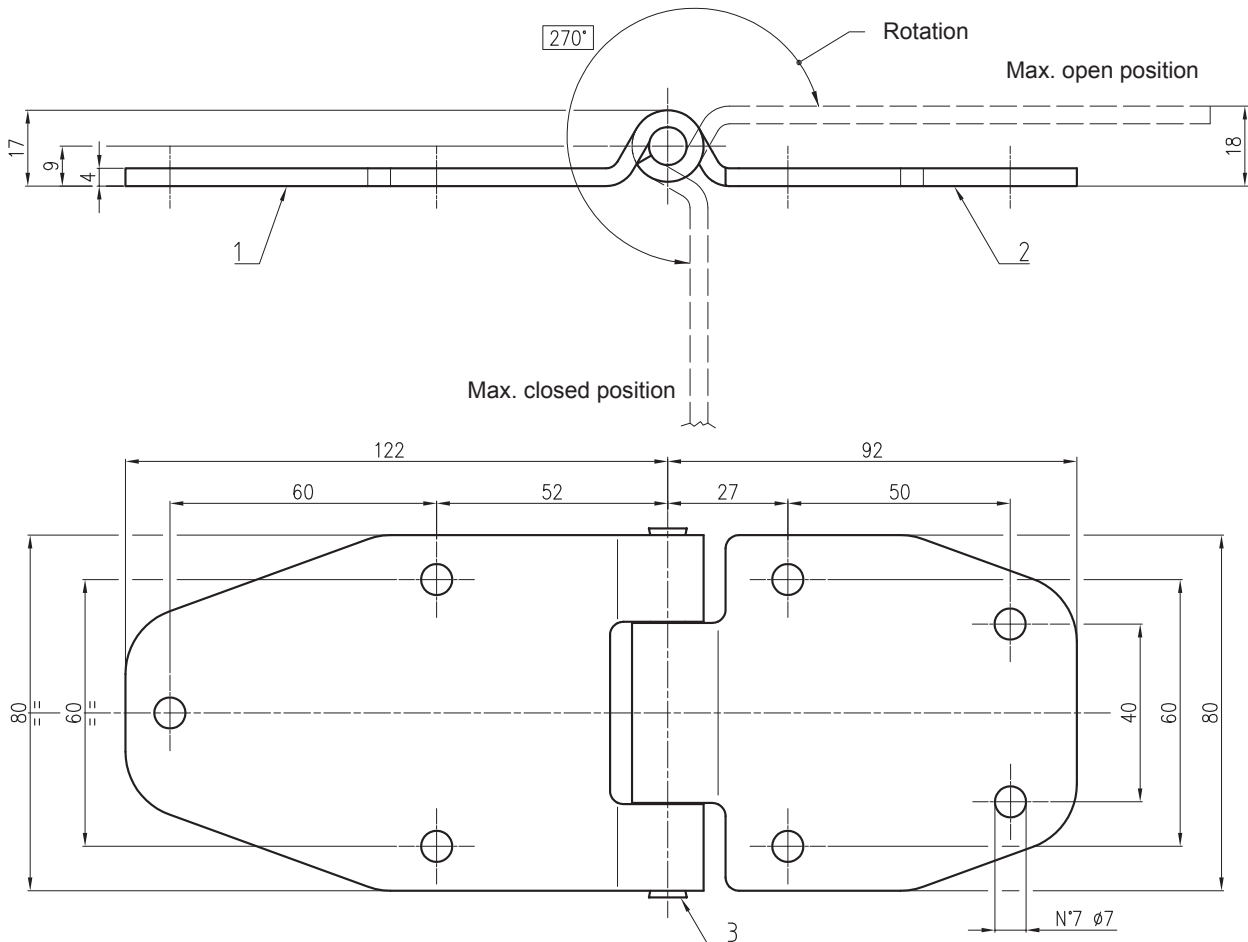
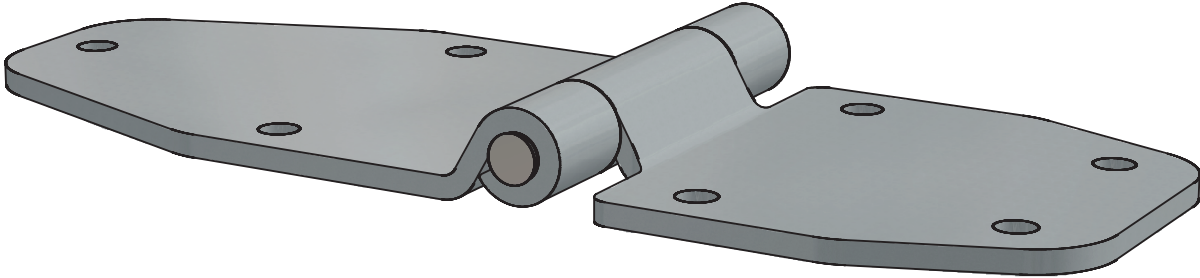
HNG.30105.*



Insert * material "code" into hinge part number

Ref	Part description	Material - Finishing (AZ)	Material - Finishing (BP)
1	Short flange	Fe360 - White zinc Cr6 free	AISI304 - Polished
2	Long flange	Fe360 - White zinc Cr6 free	AISI304 - Polished
3	Stud	AISI304	AISI304

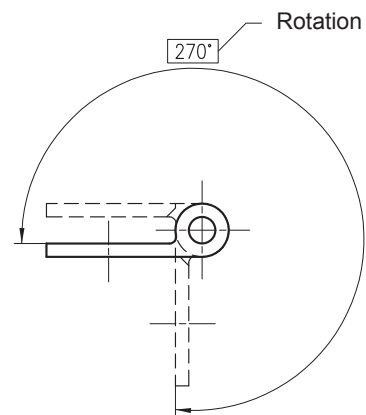
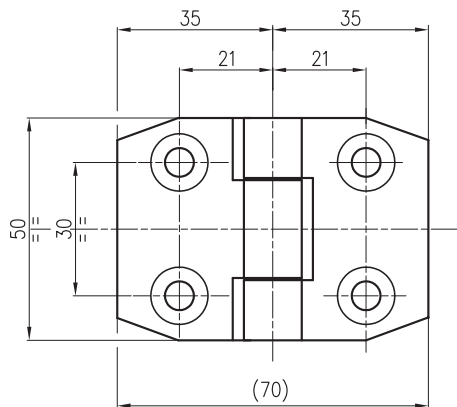
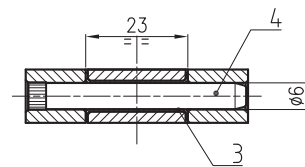
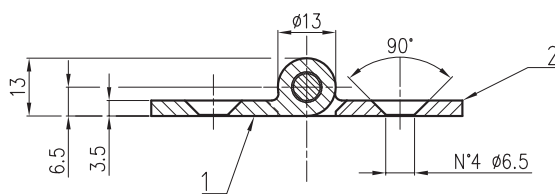
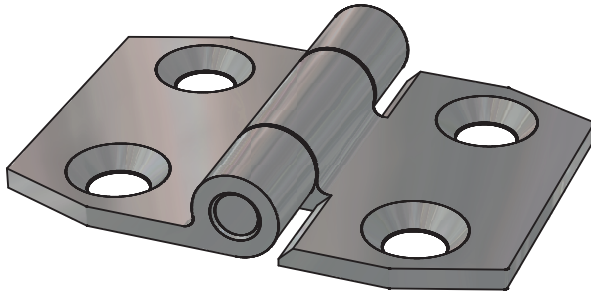
HNG.21480.*



Insert * material "code" into hinge part number

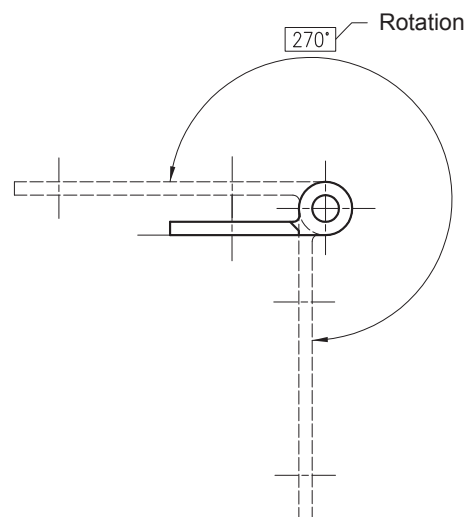
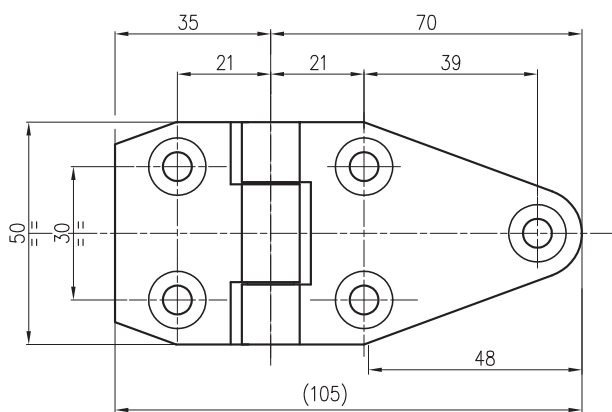
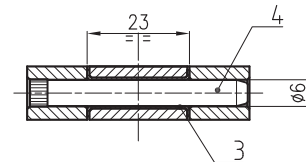
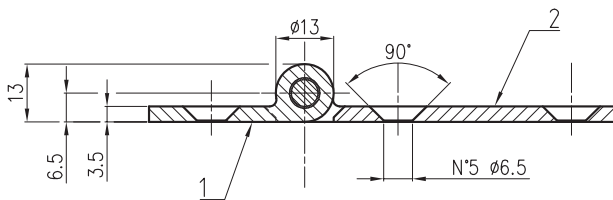
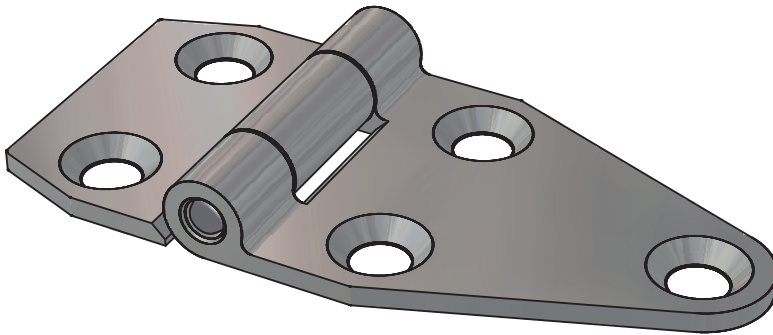
Ref	Part description	Material - Finishing (AZ)	Material - Finishing (BP)
1	Long flange	Fe360 - White zinc Cr6 free	AISI304 - Polished
2	Short flange	Fe360 - White zinc Cr6 free	AISI304 - Polished
3	Stud	AISI304	AISI304

HNG.7050S.AZ HINGE WITH FRICTIONED ROTATION



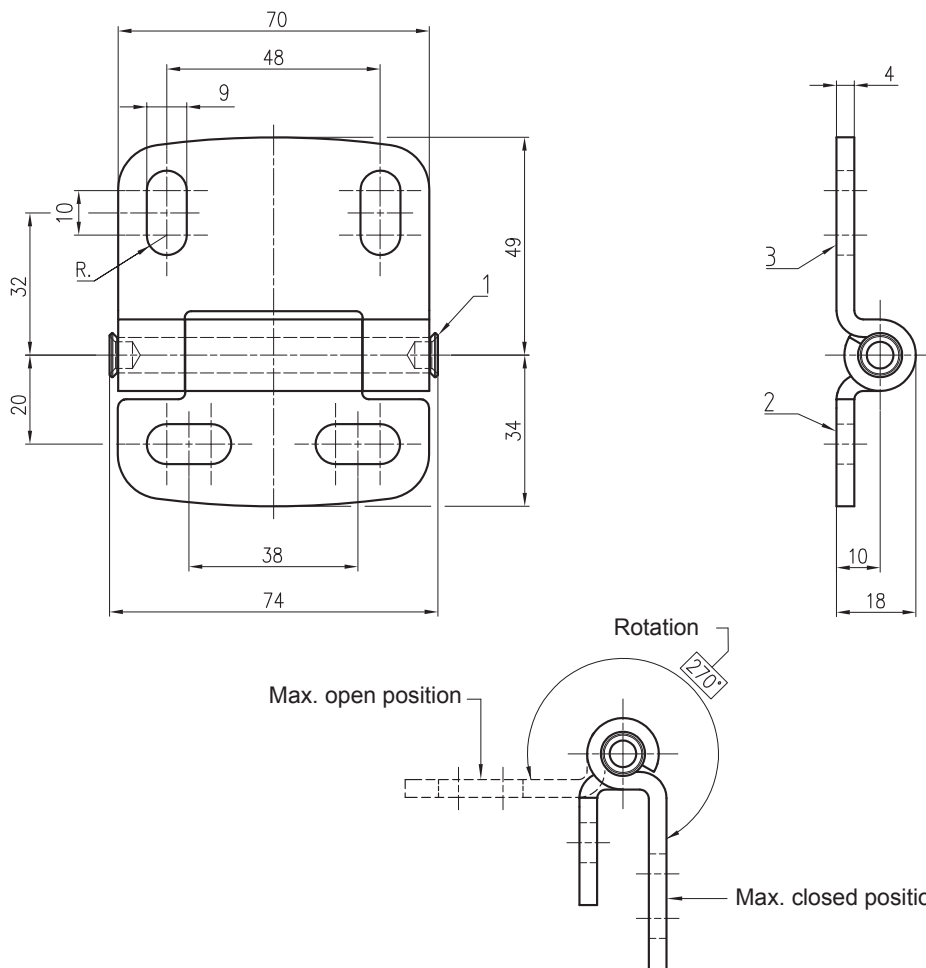
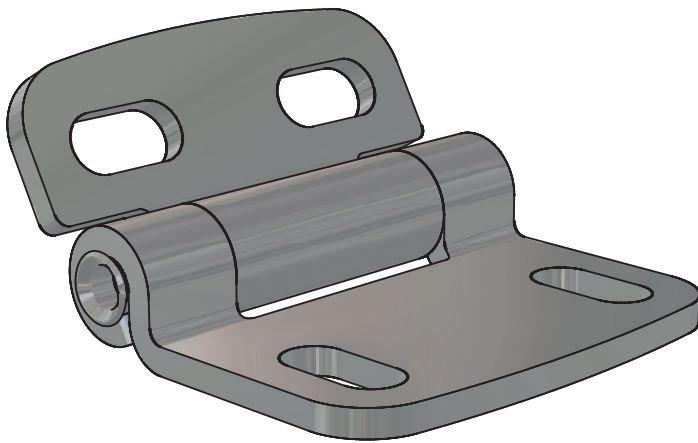
Ref	Part description	Material - Finishing (AZ)
1	Central flange	C30 - White zinc Cr6 free
2	Side flange	C30 - White zinc Cr6 free
3	Self greasing grommet	Bronze/PTFE
4	Rotation pin	C45 8.8 grade

HNG.50105.AZ HINGE WITH FRICTIONED ROTATION



Ref	Part description	Material - Finishing (AZ)
1	Central flange	C30 - White zinc Cr6 free
2	Side flange	C30 - White zinc Cr6 free
3	Self greasing grommet	Bronze/PTFE
4	Rotation pin	C45 8.8 grade

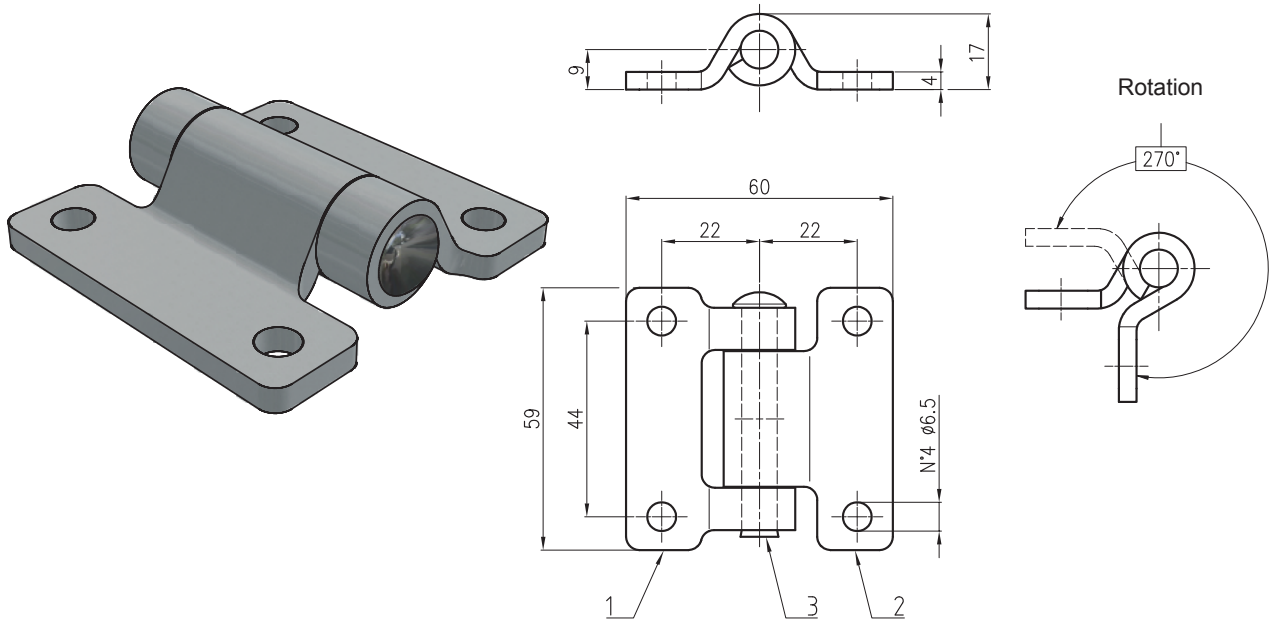
HNG.7083.*



Insert * material "code" into hinge part number

Ref	Part description	Material - Finishing (BP)	Material - Finishing (NX)
1	Stud	AISI304 - Polished	AISI304 - Black enamel coated
2	Fix flange	AISI304 - Polished	AISI304 - Black enamel coated
3	Rotating flange	AISI304 - Polished	AISI304 - Black enamel coated

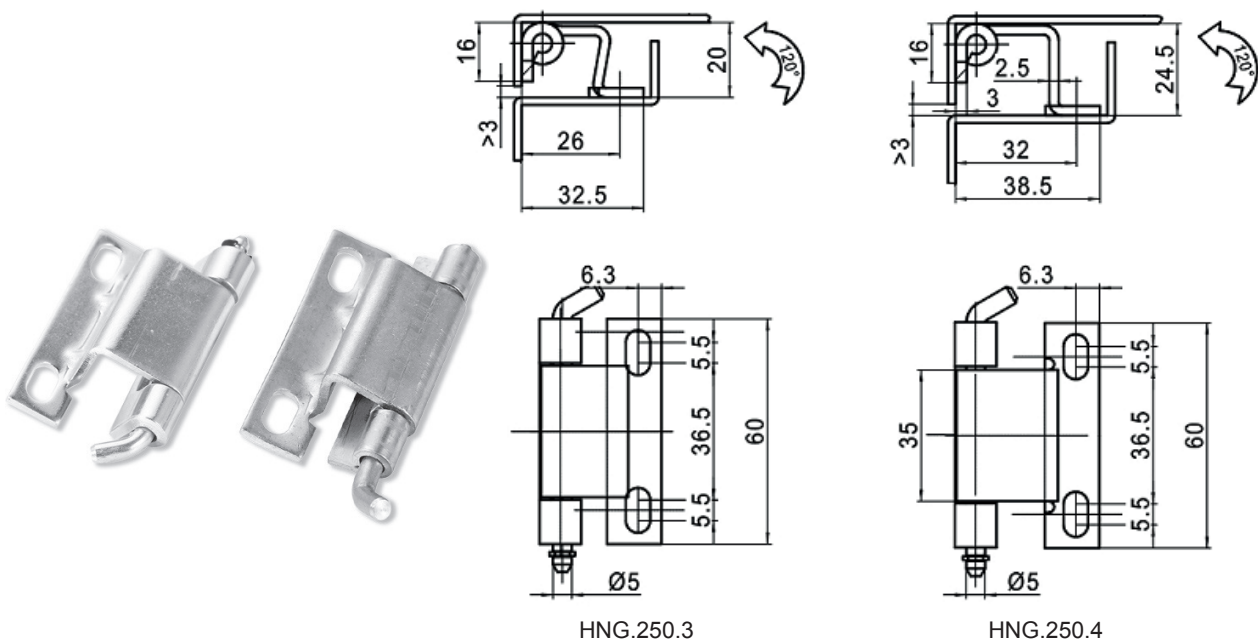
HNG.6059.*



Insert * material "code" into hinge part number

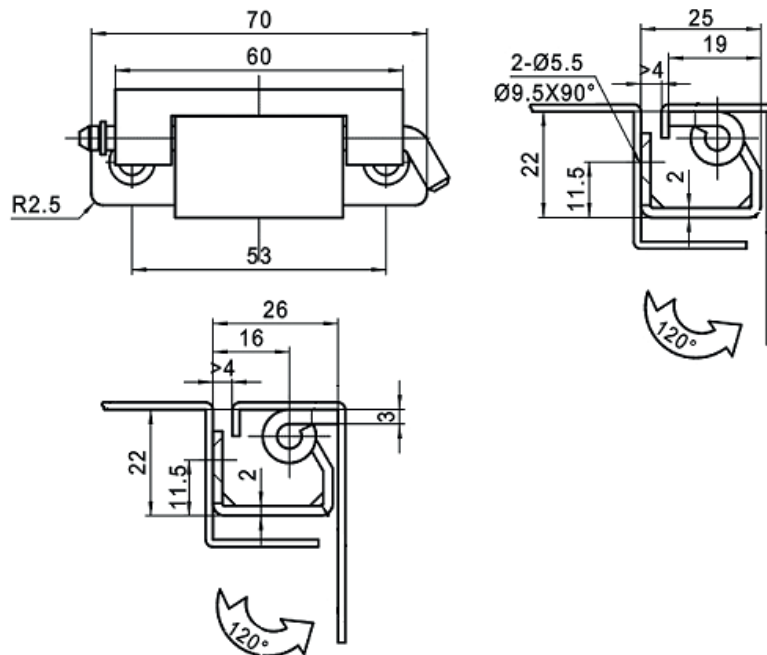
Ref	Part description	Material - Finishing (AZ)	Material - Finishing (BP)
1	Right flange	Fe360 - White zinc Cr6 free	AISI304 - Polished
2	Left flange	Fe360 - White zinc Cr6 free	AISI304 - Polished
3	Stud	AISI304	AISI304

HNG.250.*



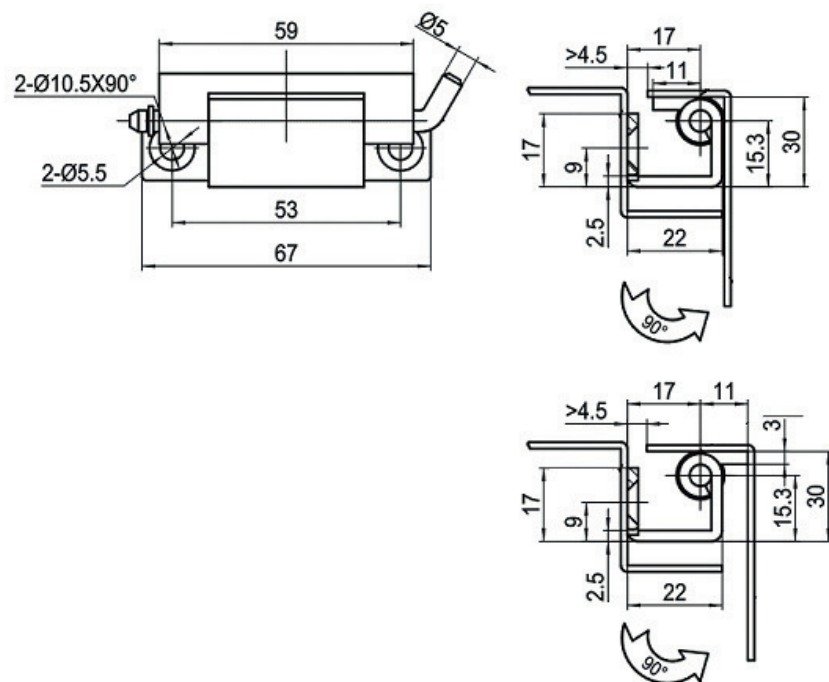
Hinge part number	Ref	Part description	Material - Finishing
HNG.250.3	1	Hinge	Steel - White zinc Cr6 free
HNG.250.4			

HNG.275.1



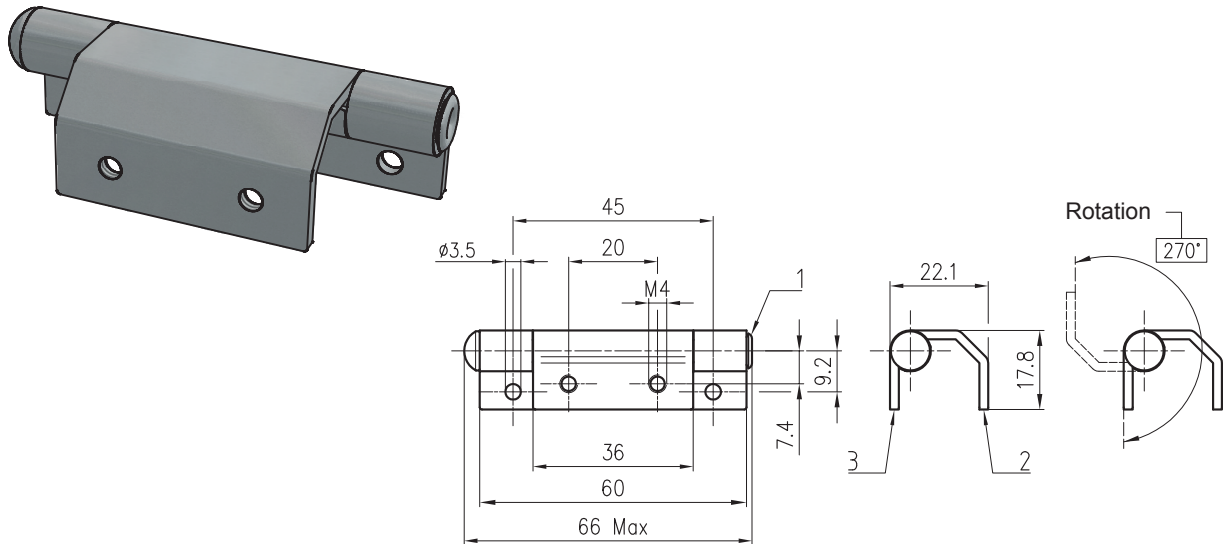
Ref	Part description	Material - Finishing
1	Hinge	Steel - White zinc Cr6 free

HNG.275.2



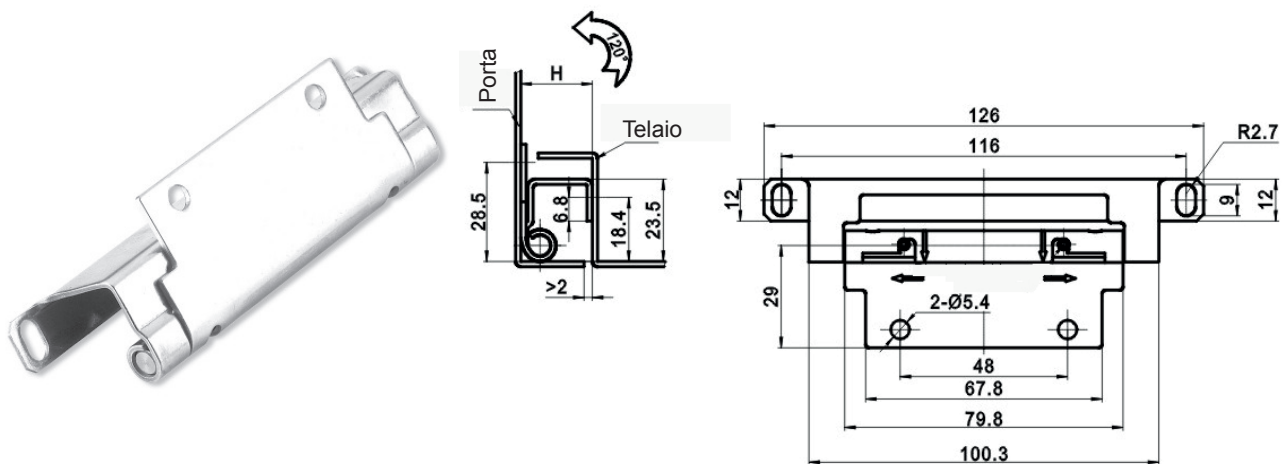
Ref	Part description	Material - Finishing
1	Hinge	Steel - White zinc Cr6 free

HNG.7002.AZ



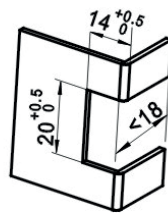
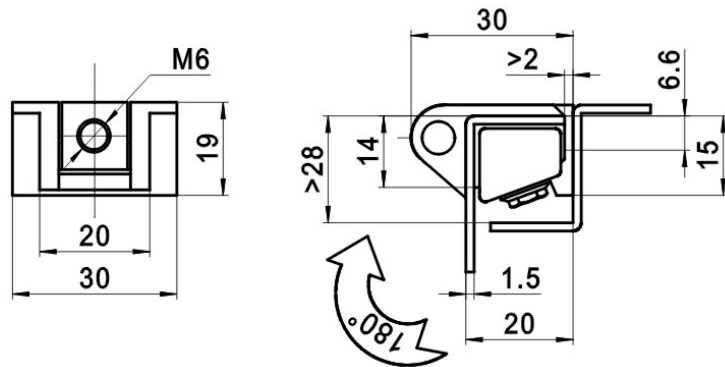
Ref	Part description	Material - Finishing
1	Stud	Steel 4.8 grade - White zinc Cr6 free
2	Rotating flange	DC03 - White zinc Cr6 free
3	Fix flange	DC03 - White zinc Cr6 free

HNG.268.*

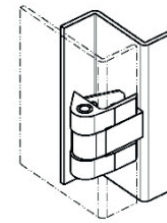


Hinge part number	H	Material - Finishing
HNG.268.1	23,9	Steel - White zinc Cr6 free
HNG.268.2	20,5	Steel - White zinc Cr6 free
HNG.268.3	17,5	Steel - White zinc Cr6 free
HNG.268.1A	23,9	Stainless steel (min. 500 pcs.)
HNG.268.2A	20,5	Stainless steel (min. 500 pcs.)
HNG.268.3A	17,5	Stainless steel (min. 500 pcs.)

HNG.208



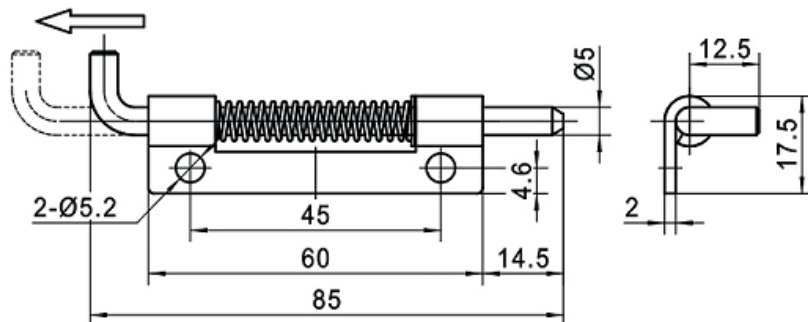
Door hole



Installation example

Ref	Part description	Material - Finishing
1	Hinge	Zinc alloy - Bright chrome

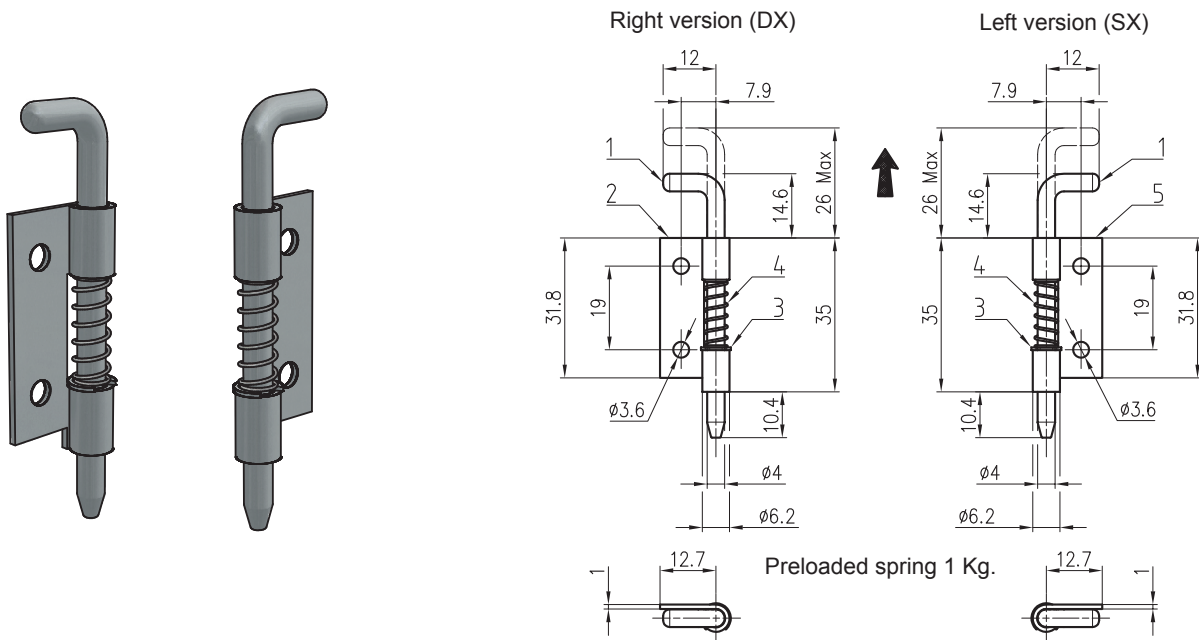
HNG.225.3*



Hinge part number	Rotation
HNG.225.3Y	Right
HNG.225.3Z	Left

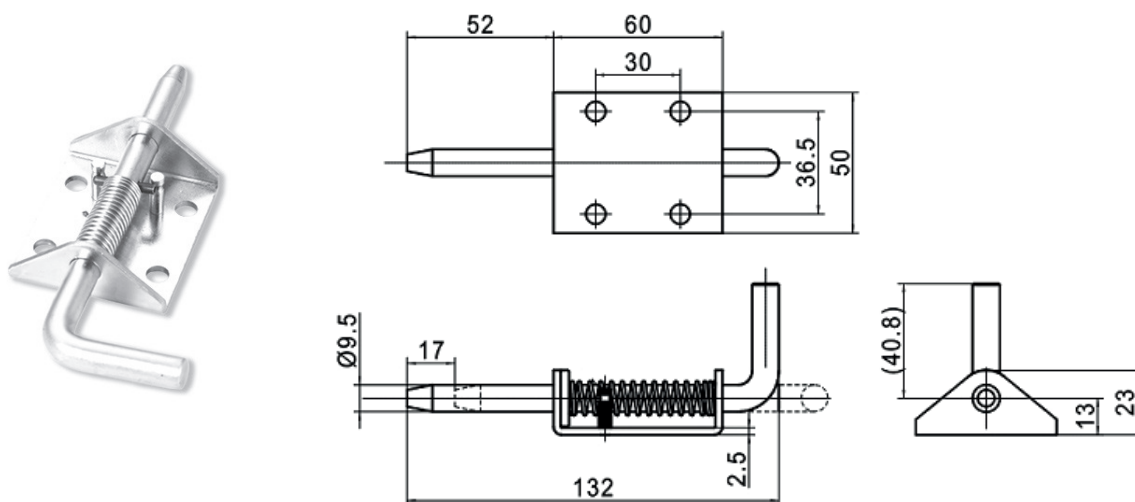
Ref	Part description	Material - Finishing
1	Hinge	Steel - White zinc Cr6 free

HNG.11DX.AZ / HNG.11SX.AZ



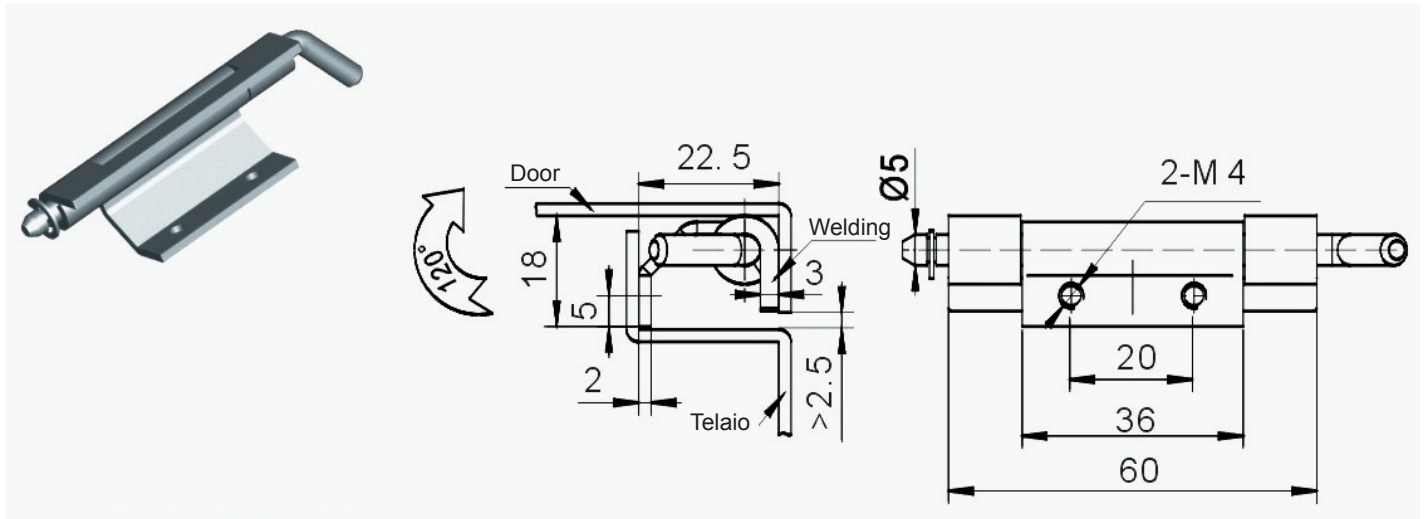
Ref	Part description	Material - Finishing
1	Stud	C10 - White zinc Cr6 free
2	Flange DX/SX	DC03 - White zinc Cr6 free
3	Ring DIN6799	Standard
4	Spring	C72 - White zinc Cr6 free

HNG.263



Ref	Part description	Material - Finishing
1	Hinge	Steel - White zinc Cr6 free

HNG.248



Ref	Part description	Material - Finishing
1	Hinge	Steel - White zinc Cr6 free