



WINKEL-Rollen | WINKEL Bearings

Anschaubplatten quadratisch für WINKEL-Rollen und Radiallager

WINKEL-Rollen mit Anschraubplatten sind fertige Systemelemente für schraubbare Verbindungen zwischen Konstruktion und Führungsprofil.

- alle Anschraubplatten mit eingeschweißter WINKEL-Rolle
- axiale Justierung mit Distanzsteckbleche Typ DS
- alle Anschraubplatten in brüniertem Ausführung
- Material: S235 JR

Sonderausführungen auf Anfrage.

Flange plates square for WINKEL Bearings and Radial Bearings

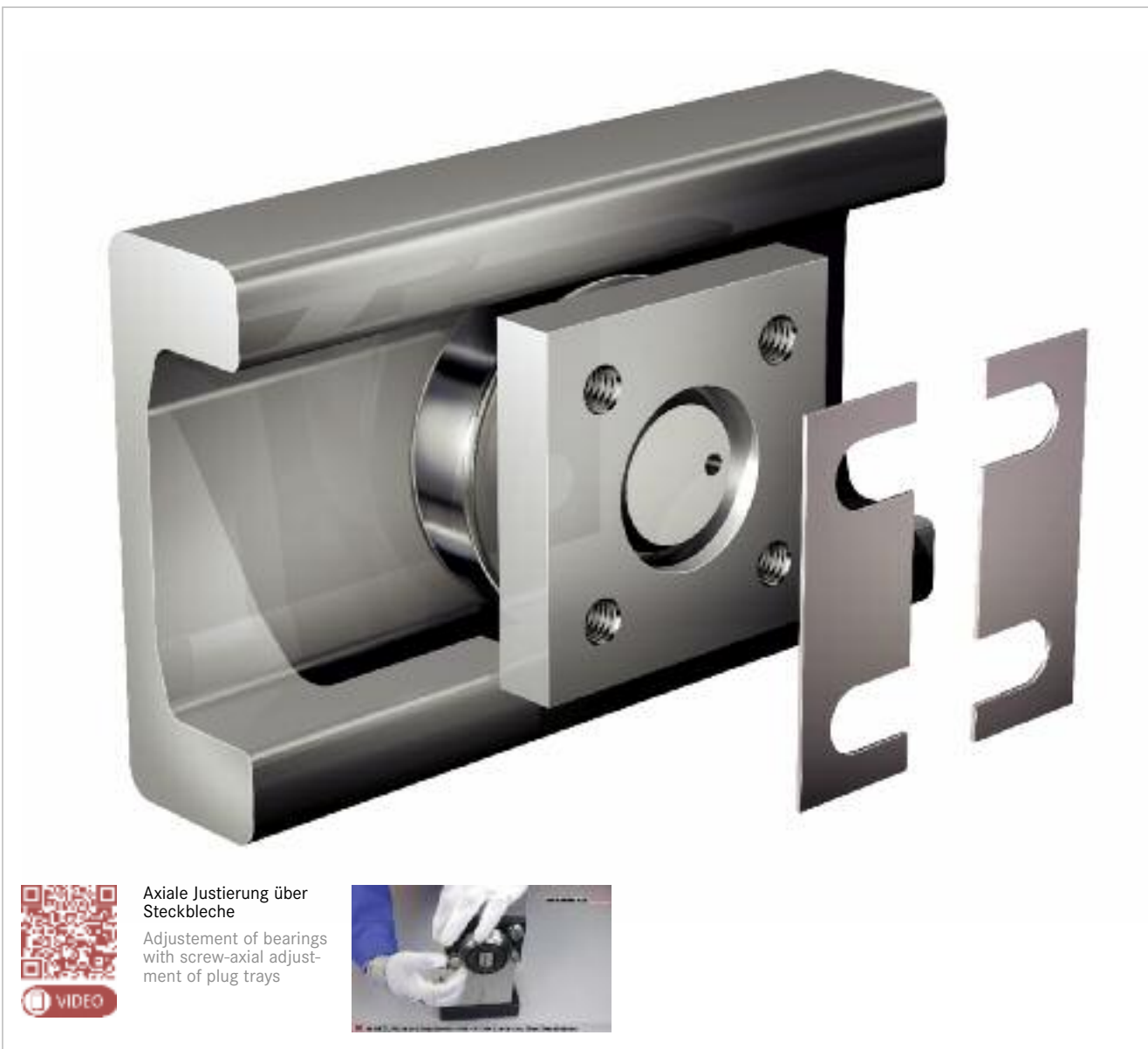
WINKEL flange plates in combination with WINKEL Bearings are suitable for screw joints between construction and guide profile.

- all flange plates are welded with WINKEL Bearings
- axial adjusting with washers type DS
- all flange plates in burnished version
- material S235 JR

Special designs on request.

CAD Download in 2D/3D unter www.winkel.de

CAD download in 2D/3D at www.winkel.de



Axiale Justierung über Steckbleche
Adjustment of bearings with screw-axial adjustment of plug trays

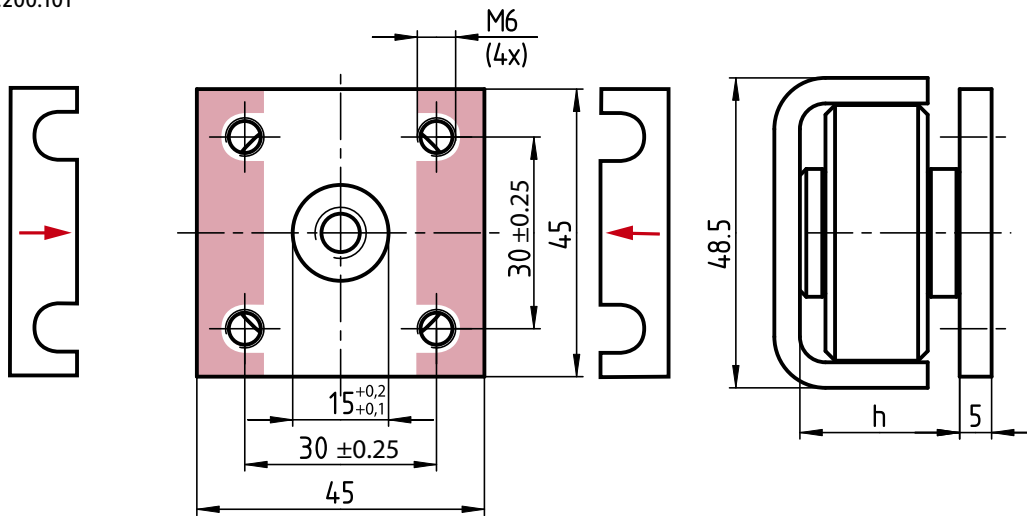




WINKEL-Rollen | WINKEL Bearings

AP A-Q

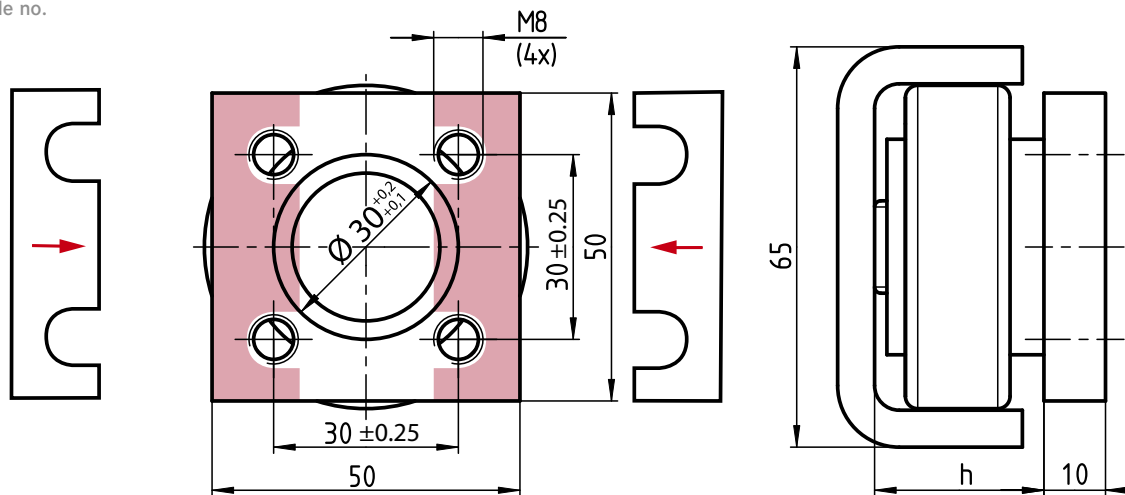
Artikel-Nr. 212.200.101
Article no.



Typ Type	WINKEL-Rolle mit AP WINKEL Bearing with AP	Artikel-Nr. Article no.	Profil Profile	h [mm]	Gewicht AP Weight AP	Distanzsteckbleche Washers	
AP A-Q	4.052 P + AP A-Q	201.032.003	Standard A	25,0	0,10 kg	DS-A-0,5 238.026.000	DS-A-1,0 238.026.001

AP S-Q

Artikel-Nr. 212.200.102
Article no.



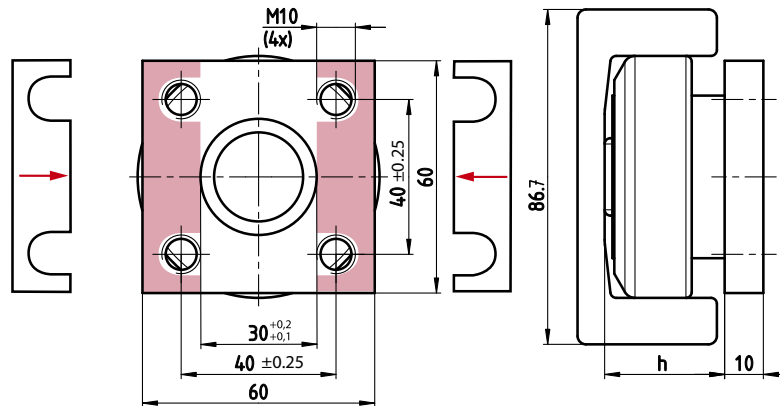
Typ Type	WINKEL-Rolle mit AP WINKEL Bearing with AP	Artikel-Nr. Article no.	Profil Profile	h [mm]	Gewicht AP Weight AP	Distanzsteckbleche Washers	
AP S-Q	4.053 + AP S-Q	200.071.001	Standard S	27,0	0,20 kg	DS-S-0,5	DS-S-1,0
	4.053 HT + AP S-Q	200.024.019	Standard S	27,0		238.025.000	238.025.001



WINKEL-Rollen | WINKEL Bearings

AP 0-Q

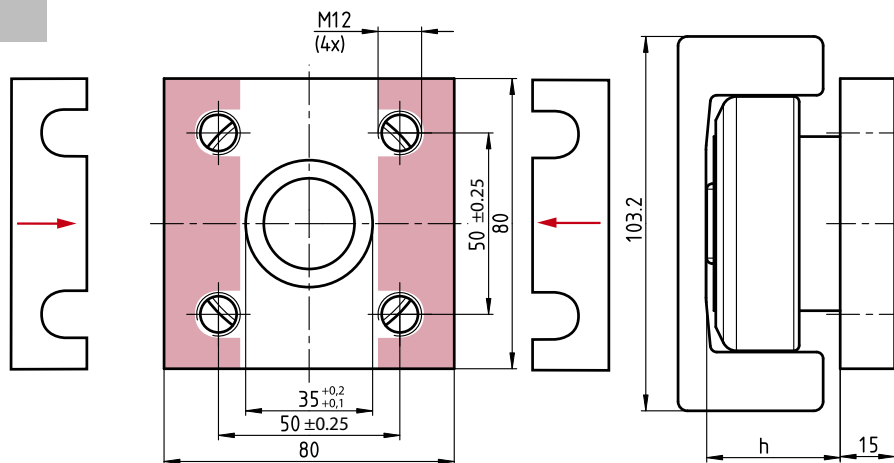
Artikel-Nr. 212.200.010
Article no.



Typ Type	WINKEL-Rolle mit AP WINKEL Bearing with AP	Artikel-Nr. Article no.	Profil Profile	h [mm]	Gewicht AP Weight AP	Distanzsteckbleche Washers
AP 0-Q	2.054 + AP 0-Q	205.061.004	Standard 0 NbV	26,5	0,28 kg	DS-0-0,5 238.020.000 DS-0-1,0 238.020.001
	4.054 + AP 0-Q	200.051.003	Standard 0 NbV	30,5		
	4.054 HT + AP 0-Q	200.001.022	Standard 0 NbV	30,5		
	4.454 + AP 0-Q	201.031.002	Standard 0 NbV	30,5 - 32,0		
	4.072 + AP 0-Q	201.011.002	Standard 0 NbV	33,0		
	4.072 P + AP 0-Q	200.149.001	Standard 0 NbV	33,0		
	PR 2.054 + AP 0-Q	205.071.003	PR 0 NbV	26,5		
	PR 4.054 + AP 0-Q	200.100.003	PR 0 NbV	30,5		
	PR 4.454 + AP 0-Q	200.114.002	PR 0 NbV	30,5 - 32,0		
	PR 4.072 + AP 0-Q	200.107.002	PR 0 NbV	33,0		
PR 4.072 P + AP 0-Q	200.011.007	PR 0 NbV	33,0			

AP 1-Q

Artikel-Nr. 212.200.011
Article no.



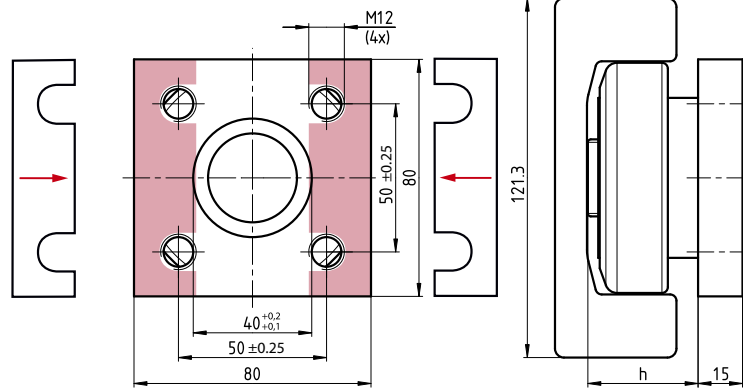
Typ Type	WINKEL-Rolle mit AP WINKEL Bearing with AP	Artikel-Nr. Article no.	Profil Profile	h [mm]	Gewicht AP Weight AP	Distanzsteckbleche Washers
AP 1-Q	2.055 + AP 1-Q	205.062.004	Standard 1 NbV	34,0	0,75 kg	DS-1-0,5 238.021.000 DS-1-1,0 238.021.001
	4.055 + AP 1-Q	200.052.001	Standard 1 NbV	36,0		
	4.055 HT + AP 1-Q	200.002.022	Standard 1 NbV	36,0		
	4.455 + AP 1-Q	201.032.002	Standard 1 NbV	36,0 - 37,5		
	4.073 + AP 1-Q	201.012.000	Standard 1 NbV	40,0		
	4.073 P + AP 1-Q	200.012.006	Standard 1 NbV	40,0		
	PR 2.055 + AP 1-Q	205.072.002	PR 1 NbV	34,0		
	PR 4.055 + AP 1-Q	200.101.003	PR 1 NbV	36,0		
	PR 4.455 + AP 1-Q	200.115.002	PR 1 NbV	36,0 - 37,5		
	PR 4.073 + AP 1-Q	200.108.002	PR 1 NbV	40,0		
PR 4.073 P + AP 1-Q	200.014.003	PR 1 NbV	40,0			



WINKEL-Rollen | WINKEL Bearings

AP 2-Q

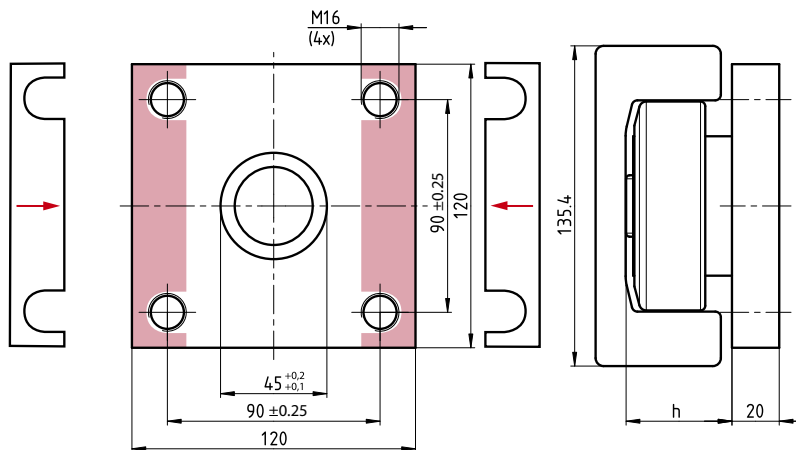
Artikel-Nr. 212.200.012
Article no.



Typ Type	WINKEL-Rolle mit AP WINKEL Bearing with AP	Artikel-Nr. Article no.	Profil Profile	h [mm]	Gewicht AP Weight AP	Distanzsteckbleche Washers
AP 2-Q	2.056 + AP 2-Q	205.107.001	Standard 2 NbV	34,0	0,75 kg	DS-2-0,5 238.021.000 DS-2-1,0 238.021.001
	4.056 + AP 2-Q	200.053.001	Standard 2 NbV	36,5		
	4.056 HT + AP 2-Q	200.003.022	Standard 2 NbV	36,5		
	4.456 + AP 2-Q	201.033.003	Standard 2 NbV	37,0 - 38,5		
	4.074 + AP 2-Q	201.013.000	Standard 2 NbV	39,5		
	4.074 P + AP 2-Q	200.013.009	Standard 2 NbV	39,5		
	PR 2.056 + AP 2-Q	205.073.003	PR 2 NbV	34,0		
	PR 4.056 + AP 2-Q	200.066.001	PR 2 NbV	36,5		
	PR 4.456 + AP 2-Q	200.116.002	PR 2 NbV	37,0 - 38,5		
	PR 4.074 + AP 2-Q	200.109.003	PR 2 NbV	39,5		
PR 4.074 P + AP 2-Q	200.013.035	PR 2 NbV	39,5			

AP 3-Q

Artikel-Nr. 212.006.000
Article no.



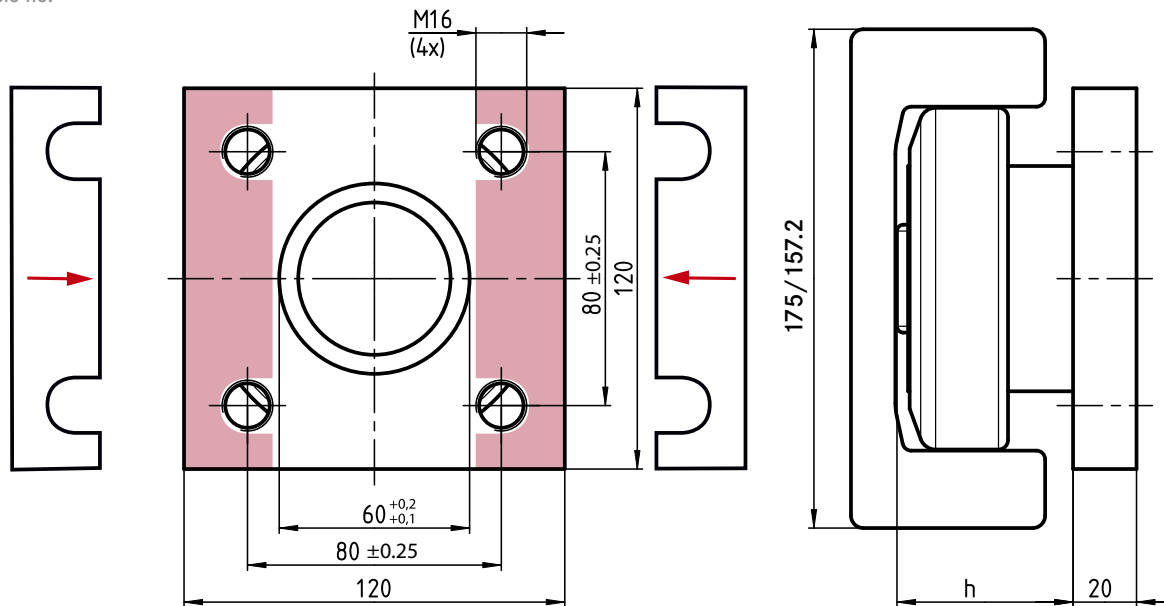
Typ Type	WINKEL-Rolle mit AP WINKEL Bearing with AP	Artikel-Nr. Article no.	Profil Profile	h [mm]	Gewicht AP Weight AP	Distanzsteckbleche Washers		
AP 3-Q	2.058 + AP 3-Q	205.064.003	Standard 3 NbV	41,0	1,85 kg	DS-3-0,5 238.022.000 DS-3-1,0 238.022.001		
	4.058 + AP 3-Q	200.054.000	Standard 3 NbV	44,0				
	4.058 HT + AP 3-Q	200.005.018	Standard 3 NbV	44,0				
	4.458 + AP 3-Q	201.035.003	Standard 3 NbV	44,0 - 45,5				
	4.076 + AP 3-Q	201.017.000	Standard 3 NbV	48,0				
	4.076 P + AP 3-Q	200.015.010	Standard 3 NbV	48,0				
	PR 2.058 + AP 3-Q	205.074.001	PR 3 NbV	41,0				
	PR 4.058 + AP 3-Q	200.140.000	PR 3 NbV	44,0				
	PR 4.458 + AP 3-Q	200.117.003	PR 3 NbV	44,0 - 45,5				
	PR 4.076 + AP 3-Q	200.110.002	PR 3 NbV	48,0				
	PR 4.076 P + AP 3-Q	200.015.011	PR 3 NbV	48,0				



WINKEL-Rollen | WINKEL Bearings

AP 4-Q

Artikel-Nr. 212.200.014
Article no.



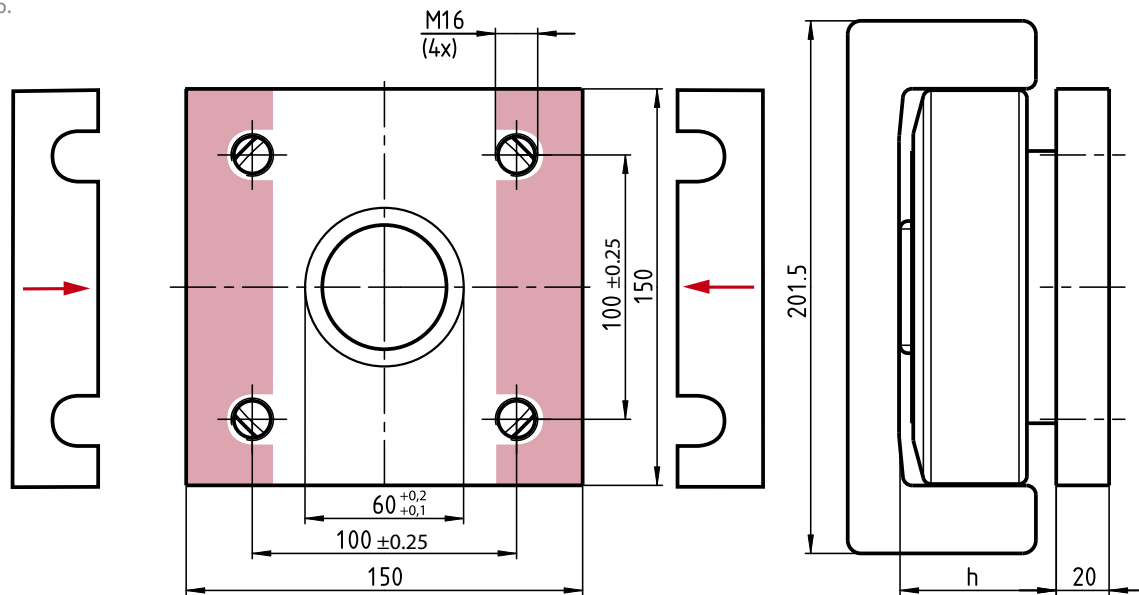
Typ Type	WINKEL-Rolle mit AP WINKEL Bearing with AP	Artikel-Nr. Article no.	Profil Profile	h [mm]	Gewicht AP Weight AP	Distanzsteckbleche Washers
AP 4-Q	2.061 + AP 4-Q	205.108.001	Standard 4 NbV	51,5	2,2 kg	DS-4-0,5 DS-4-1,0 238.023.000 238.023.001
	4.061 + AP 4-Q	200.055.001	Standard 4 NbV	55,0		
	4.061 HT + AP 4-Q	200.008.010	Standard 4 NbV	55,0		
	4.461 + AP 4-Q	201.038.002	Standard 4 NbV	55,0 - 57,0		
	4.0784 + AP 4-Q	200.016.003	Standard 4 NbV	55,0		
	4.0784 P + AP 4-Q	200.016.011	Standard 4 NbV	55,0		
	PR 2.061 + AP 4-Q	205.075.002	PR 4 NbV	51,5		
	PR 4.061 + AP 4-Q	200.104.002	PR 4 NbV	55,0		
	PR 4.461 + AP 4-Q	200.118.002	PR 4 NbV	55,0 - 57,0		
	PR 4.0784 + AP 4-Q	200.111.002	PR 4 NbV	55,0		
	PR 4.0784 P + AP 4-Q	200.067.002	PR 4 NbV	55,0		
	2.062 + AP 4-Q	205.066.002	Standard 5 NbV	51,5		
	4.062 + AP 4-Q	200.076.001	Standard 5 NbV	56,0		
	4.062 HT + AP 4-Q	200.009.025	Standard 5 NbV	56,0		
	4.462 + AP 4-Q	201.039.002	Standard 5 NbV	56,0 - 60,0		
	4.079 + AP 4-Q	201.015.001	Standard 5 NbV	59,5		
	4.079 P + AP 4-Q	200.018.005	Standard 5 NbV	59,5		
	PR 2.062 + AP 4-Q	205.076.002	PR 5 NbV	51,5		
	PR 4.062 + AP 4-Q	200.105.002	PR 5 NbV	56,0		
	PR 4.462 + AP 4-Q	200.119.002	PR 5 NbV	56,0 - 60,0		
PR 4.079 + AP 4-Q	200.112.002	PR 5 NbV	59,5			
PR 4.079 P + AP 4-Q	200.154.002	PR 5 NbV	59,5			



WINKEL-Rollen | WINKEL Bearings

AP 6-Q

Artikel-Nr. 212.200.016
Article no.



Typ Type	WINKEL-Rolle mit AP WINKEL Bearing with AP	Artikel-Nr. Article no.	Profil Profile	h [mm]	Gewicht AP Weight AP	Distanzsteckbleche Washers
AP 6-Q	2.063 + AP 6-Q	205.067.003	Standard 6 NbV	54,0	3,4 kg	DS-6-0,5 DS-6-1,0 238.024.000 238.024.001
	4.063 + AP 6-Q	200.056.001	Standard 6 NbV	58,5		
	4.063 HT + AP 6-Q	200.010.037	Standard 6 NbV	58,5		
	4.463 + AP 6-Q	201.040.002	Standard 6 NbV	58,5 - 62,5		
	4.080 + AP 6-Q	200.019.004	Standard 6 NbV	69,0		
	4.080 P + AP 6-Q	201.016.001	Standard 6 NbV	62,0		
	PR 2.063 + AP 6-Q	205.077.002	PR 6 NbV	54,0		
	PR 4.063 + AP 6-Q	200.106.003	PR 6 NbV	58,5		
	PR 4.463 + AP 6-Q	200.120.002	PR 6 NbV	58,5 - 62,5		
	PR 4.080 + AP 6-Q	200.113.002	PR 6 NbV	69,0		
	PR 4.080 P + AP 6-Q	200.155.002	PR 6 NbV	62,0		