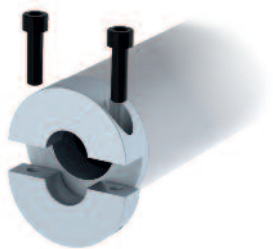
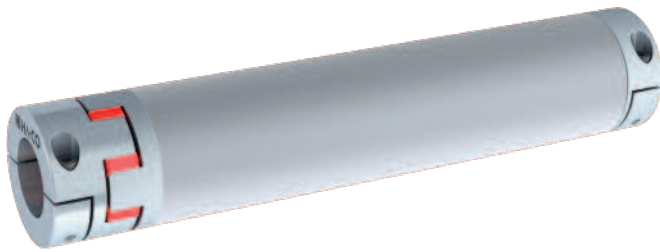


Aluminium Verbindungswellen SWA-EK mit einseitigem Elastomerstern

Aluminium line shafts SWA-EK with single ended elastomerspider



Einfachste Montage
mit Halbschalenklemmung
Easy to mount
with divided clamping hub

Merkmale

- Ausführung in hochwertigem Aluminium
- Sehr niedriges Massenträgheitsmoment
- Spielfrei
- Erhöhte Torsionssteife
- Temperaturbereich -30°C bis +100°C

Werkstoff der Naben+Rohr: Aluminium
Verbindung Nabe-Rohr: Gelebt

Bestellbezeichnung / Beispiel:

SWA-EK-325 - 28H7 - 35H7P - 98ShA - 850mm
Typ+Größe Bohrung D1 Bohrung D2 Elastomerstern Gesamtlänge L
(mit Passfedernut)

SWA-EK-325 - 28H7 - 35H7P - 98ShA - 850mm - K
Typ+Größe Bohrung D1 Bohrung D2 Elastomerstern Gesamtlänge L kalibriert
(mit Passfedernut)

Characteristics

- Execution in high quality aluminium
- Very low moment of inertia
- Backlash-free
- Increased torsional stiffness
- Temperature range -30°C to +100°C

Material of hubs+tube: aluminium
Connection hub-tube: glued

Order description / example:

SWA-EK-325 - 28H7 - 35H7P - 98ShA - 850mm
Type+Size Bore D1 Bore D2 Elastomer insert Total length L
(with keyway)

SWA-EK-325 - 28H7 - 35H7P - 98ShA - 850mm - K
Type+Size Bore D1 Bore D2 Elastomer insert Total length L calibrated
(with keyway)

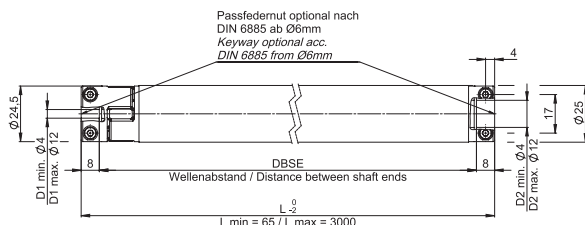
Standard Optionen / Standardized options



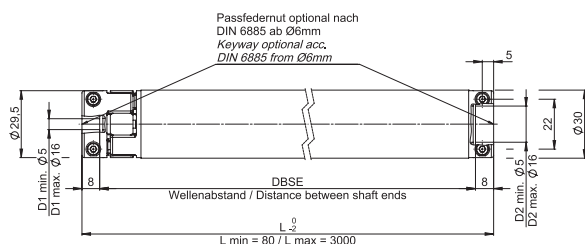
Shorehärte Elastomerstern /
Shore hardness Elastomer insert
80 Sh A, 92 Sh A, 64 Sh D-H, 64 Sh D
Elastomerstern / Elastomer insert
G = gebohrt / G = drilled
K = kalibriert / K = calibrated

Gewünschte Optionen müssen im Bestelltext angegeben werden (Legende Symbole S. 7).
Desired options have to be mentioned in the order text (key symbols p. 7).

SWA-EK-9

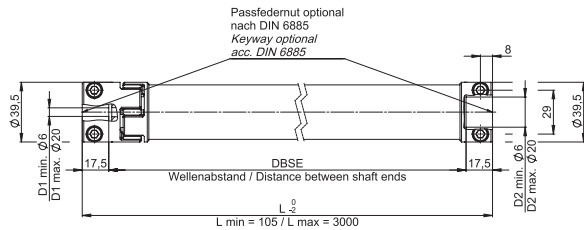


SWA-EK-12

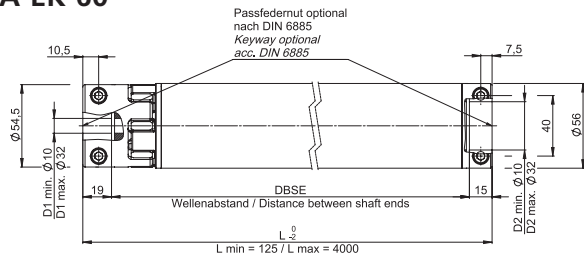


	SWA-EK-9				SWA-EK-12			
	R	B	Y	G	R	B	Y	G
Nennmoment [Nm] Nominal torque [Nm]	9	3	5	12	12,5	4	7,5	16
Max. Moment* [Nm] Max. torque* [Nm]	18	6	10	24	25	8	15	32
Max. lateraler Wellenversatz [mm] Max. lateral misalignment [mm]	±0,08	±0,20	±0,14	±0,05	±0,09	±0,21	±0,15	±0,06
Max. axialer Wellenversatz [mm] Max. axial misalignment [mm]	+0,9 / -0,4				+1,0 / -0,5			
Klemmschrauben DIN 912 [12.9] Clamping screws DIN 912 [12.9]	4x M3				4x M3			
Anzugsmoment der Schrauben [Nm] Tightening torque of screws [Nm]	2				2			

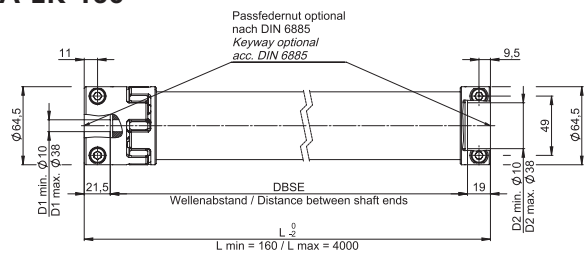
SWA-EK-17



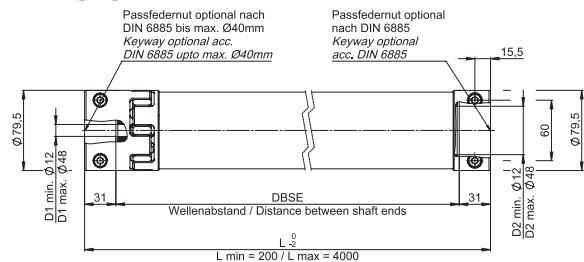
SWA-EK-60



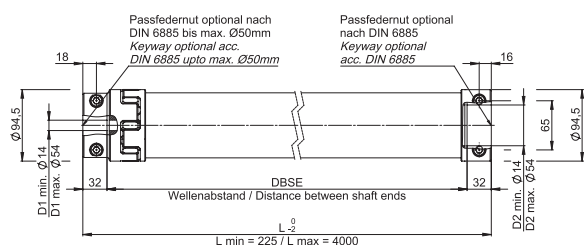
SWA-EK-160



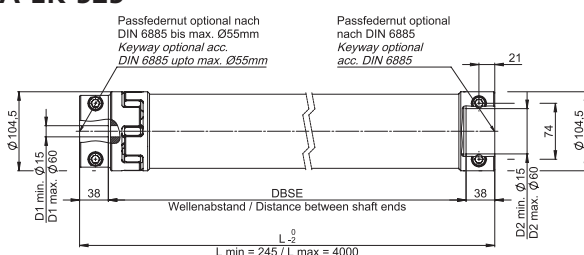
SWA-EK-325



SWA-EK-450



SWA-EK-525



	SWA-EK-17				SWA-EK-60		
	R	B	Y	G	R	Y	G
Nennmoment [Nm] Nominal torque [Nm]	17	5	10	21	60	35	75
Max. Moment* [Nm] Max. torque* [Nm]	34	10	20	42	120	70	150
Max. lateraler Wellenversatz [mm] Max. lateral misalignment [mm]	±0,06	±0,15	±0,10	±0,04	±0,10	±0,14	±0,07
Max. axialer Wellenversatz [mm] Max. axial misalignment [mm]	+1,2 / -0,5				+1,4 / -0,5		
Klemmschrauben DIN 912 [12.9] Clamping screws DIN 912 [12.9]	4x M6				4x M6		
Anzugsmoment der Schrauben [Nm] Tightening torque of screws [Nm]	11				15		

	SWA-EK-160			SWA-EK-325		
	R	Y	G	R	Y	G
Nennmoment [Nm] Nominal torque [Nm]	160	95	200	325	190	405
Max. Moment* [Nm] Max. torque* [Nm]	320	190	400	650	380	810
Max. lateraler Wellenversatz [mm] Max. lateral misalignment [mm]	±0,11	±0,15	±0,08	±0,12	±0,17	±0,09
Max. axialer Wellenversatz [mm] Max. axial misalignment [mm]	+1,5 / -0,7			+1,8 / -0,7		
Klemmschrauben DIN 912 [12.9] Clamping screws DIN 912 [12.9]	4x M8			4x M8		
Anzugsmoment der Schrauben [Nm] Tightening torque of screws [Nm]	32			38		

	SWA-EK-450			SWA-EK-525		
	R	Y	G	R	Y	G
Nennmoment [Nm] Nominal torque [Nm]	450	265	560	525	310	655
Max. Moment* [Nm] Max. torque* [Nm]	900	530	1120	1050	620	1310
Max. lateraler Wellenversatz [mm] Max. lateral misalignment [mm]	±0,14	±0,19	±0,10	±0,16	±0,23	±0,11
Max. axialer Wellenversatz [mm] Max. axial misalignment [mm]	+2,0 / -1,0			+2,1 / -1,0		
Klemmschrauben DIN 912 [12.9] Clamping screws DIN 912 [12.9]	4x M10			4x M12		
Anzugsmoment der Schrauben [Nm] Tightening torque of screws [Nm]	84			145		

* nur kurzzeitig zulässig / only permitted for short time