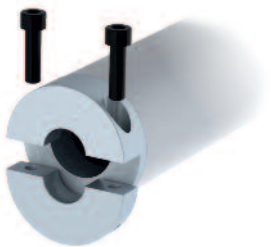
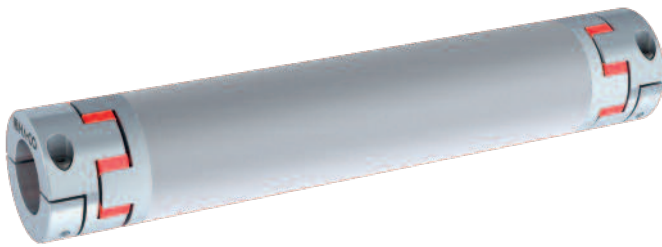


Aluminium Verbindungswellen SWA-EE mit beidseitigem Elastomerstern

Aluminium line shafts SWA-EE with double ended elastomer insert



Einfachste Montage
mit Halbschalenklemmung
Easy to mount
with divided clamping hub

Standard Optionen / Standardized options



Shorehärte Elastomerstern /
Shore hardness Elastomer insert
80 Sh A, 92 Sh A, 64 Sh D-H, 64 Sh D
Elastomerstern / Elastomer insert
G = gebohrt / G = drilled
K = kalibriert / K = calibrated

Gewünschte Optionen müssen im Bestelltext angegeben werden (Legende Symbole S. 7).
Desired options have to be mentioned in the order text (key symbols p. 7).

Merkmale

- Ausführung in hochwertigem Aluminium
- Sehr niedriges Massenträgheitsmoment
- Spielfrei
- Hohe Torsionssteife
- Ausgestattet mit zwei Elastomersternen
- Grosser Ausgleich von Fluchtungsfehlern
- Temperaturbereich -30°C bis +100°C

Werkstoff der Naben+Rohr: Aluminium
Verbindung Nabe-Rohr: Gelebt

Bestellbezeichnung / Beispiel:

SWA-EE-325 - 28H7 - 35H7P - 98ShA - 850mm
Typ+Größe Bohrung D1 Bohrung D2 Elastomerstern Gesamtlänge L
(mit Passfedernut)

SWA-EE-325 - 28H7 - 35H7P - 98ShA - 850mm - K
Typ+Größe Bohrung D1 Bohrung D2 Elastomerstern Gesamtlänge L kalibriert
(mit Passfedernut)

Characteristics

- Execution in high quality aluminium
- Very low moment of inertia
- Backlash-free
- High torsional stiffness
- Equipped with two elastomer insert
- High compensation of shaft misalignment
- Temperature range -30°C to +100°C

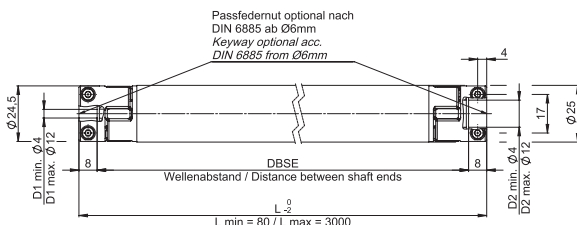
Material of hubs+tube: aluminium
Connection hub-tube: glued

Order description / example:

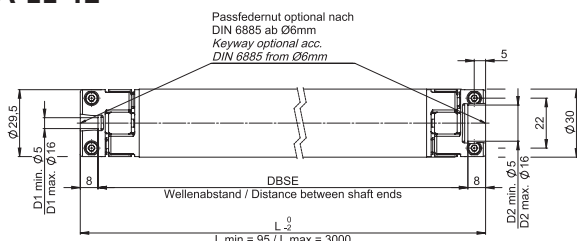
SWA-EE-325 - 28H7 - 35H7P - 98ShA - 850mm
Type+Size Bore D1 Bore D2 Elastomer insert Total length L
(with keyway)

SWA-EE-325 - 28H7 - 35H7P - 98ShA - 850mm - K
Type+Size Bore D1 Bore D2 Elastomer insert Total length L calibrated
(with keyway)

SWA-EE-9

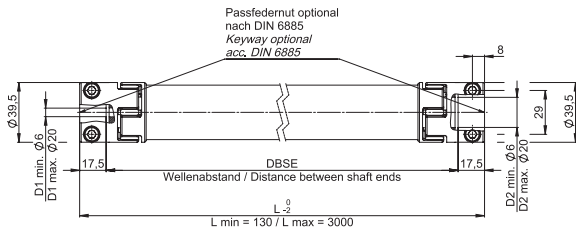


SWA-EE-12

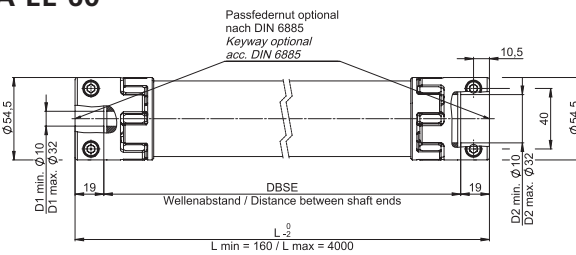


	SWA-EE-9				SWA-EE-12			
	R	B	Y	G	R	B	Y	G
Nennmoment [Nm] Nominal torque [Nm]	9	3	5	12	12,5	4	7,5	16
Max. Moment* [Nm] Max. torque* [Nm]	18	6	10	24	25	8	15	32
Max. lateraler Wellenversatz [mm] Max. lateral misalignment [mm]	± L x tan 0,9 1,1 1,0 0,8				± L x tan 0,9 1,1 1,0 0,8			
Max. axialer Wellenversatz [mm] Max. axial misalignment [mm]	+1,8 / -0,8				+2,0 / -1,0			
Klemmschrauben DIN 912 [12.9] Clamping screws DIN 912 [12.9]	4x M3				4x M3			
Anzugsmoment der Schrauben [Nm] Tightening torque of screws [Nm]	2				2			

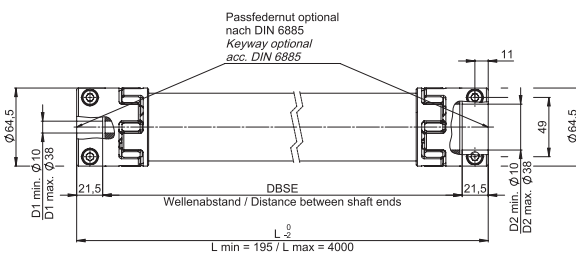
SWA-EE-17



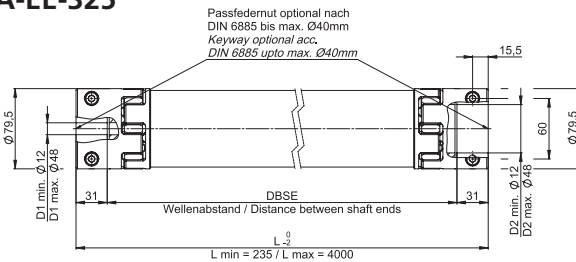
SWA-EE-60



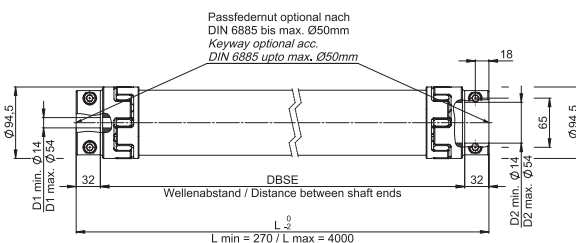
SWA-EE-160



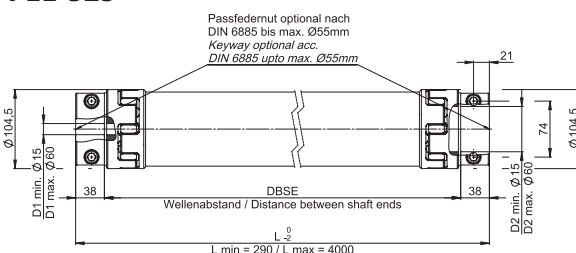
SWA-EE-325



SWA-EE-450



SWA-EE-525



	SWA-EE-17				SWA-EE-60		
	R	B	Y	G	R	Y	G
Nennmoment [Nm] Nominal torque [Nm]	17	5	10	21	60	35	75
Max. Moment* [Nm] Max. torque* [Nm]	34	10	20	42	120	70	150
Max. lateraler Wellenversatz [mm] Max. lateral misalignment [mm]	± L x tan 0,9 1,1 1,0 0,8				± L x tan 0,9 1,0 0,8		
Max. axialer Wellenversatz [mm] Max. axial misalignment [mm]	+2,4 / -1,0				+2,8 / -1,0		
Klemmschrauben DIN 912 [12.9] Clamping screws DIN 912 [12.9]	4x M6				4x M6		
Anzugsmoment der Schrauben [Nm] Tightening torque of screws [Nm]	11				15		

	SWA-EE-160			SWA-EE-325		
	R	Y	G	R	Y	G
Nennmoment [Nm] Nominal torque [Nm]	160	95	200	325	190	405
Max. Moment* [Nm] Max. torque* [Nm]	320	190	400	650	380	810
Max. lateraler Wellenversatz [mm] Max. lateral misalignment [mm]	± L x tan 0,9 1,0 0,8			± L x tan 0,9 1,0 0,8		
Max. axialer Wellenversatz [mm] Max. axial misalignment [mm]	+3,0 / -1,4			+3,6 / -1,4		
Klemmschrauben DIN 912 [12.9] Clamping screws DIN 912 [12.9]	4x M8			4x M8		
Anzugsmoment der Schrauben [Nm] Tightening torque of screws [Nm]	32			38		

	SWA-EE-450			SWA-EE-525		
	R	Y	G	R	Y	G
Nennmoment [Nm] Nominal torque [Nm]	450	265	560	525	310	655
Max. Moment* [Nm] Max. torque* [Nm]	900	530	1120	1050	620	1310
Max. lateraler Wellenversatz [mm] Max. lateral misalignment [mm]	± L x tan 0,9 1,0 0,8			± L x tan 0,9 1,0 0,8		
Max. axialer Wellenversatz [mm] Max. axial misalignment [mm]	+4,0 / -2,0			+4,2 / -2,0		
Klemmschrauben DIN 912 [12.9] Clamping screws DIN 912 [12.9]	4x M10			4x M12		
Anzugsmoment der Schrauben [Nm] Tightening torque of screws [Nm]	84			145		

* nur kurzzeitig zulässig / only permitted for short time