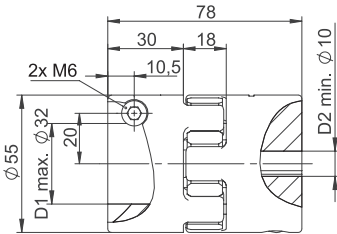
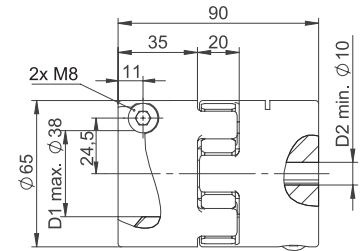


SKL-60

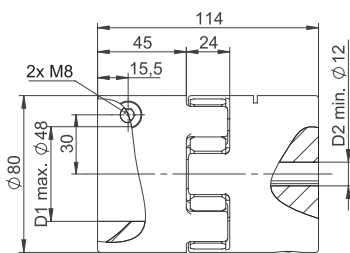


R	Y	G		R	Y	G
60	35	75	Nennmoment [Nm] Nominal torque [Nm]	160	95	200
120	70	150	Maximalmoment [Nm] Max. torque [Nm]	320	190	400
2060	1430	2980	Statische Drehfedersteife [Nm/rad] Static spring stiffness [Nm/rad]	3440	2290	4350
2560	1480	3696	Laterale Federsteife [N/mm] Lateral spring stiffness [N/mm]	3200	1780	4348
0.10	0.14	0.07	Max. lateraler Wellenversatz [mm] Max. lateral shaft misalignment [mm]	0.11	0.15	0.08
0.9	1.0	0.8	Max. angularer Wellenversatz [Grad] Max. angular shaft misalignment [Degree]	0.9	1.0	0.8
+1.4/-0.5			Max. axialer Wellenversatz [mm] Max. axial shaft misalignment [mm]	+1.5/-0.7		
7000			max. Drehzahl [rpm] max. speed [rpm]	6000		
15.0			Anzugsmoment der Schrauben M _A [Nm] Tightening torque of screws M _A [Nm]	32.0		
57.0			Störkreis [ø mm] Swing circle [ø mm]	71.0		

SKL-160

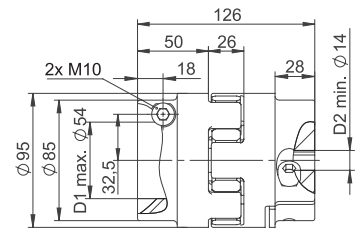


SKL-325

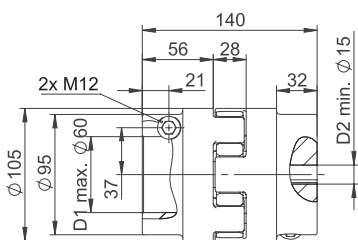


R	Y	G		R	Y	G
325	190	405	Nennmoment [Nm] Nominal torque [Nm]	450	265	560
650	380	810	Maximalmoment [Nm] Max. torque [Nm]	900	530	1120
7160	4580	10540	Statische Drehfedersteife [Nm/rad] Static spring stiffness [Nm/rad]	19200	6300	27580
4400	2350	6474	Laterale Federsteife [N/mm] Lateral spring stiffness [N/mm]	5930	2430	7270
0.12	0.17	0.09	Max. lateraler Wellenversatz [mm] Max. lateral shaft misalignment [mm]	0.14	0.19	0.10
0.9	1.0	0.8	Max. angularer Wellenversatz [Grad] Max. angular shaft misalignment [Degree]	0.9	1.0	0.8
+1.8/-0.7			Max. axialer Wellenversatz [mm] Max. axial shaft misalignment [mm]	+2.0/-1.0		
5000			max. Drehzahl [rpm] max. speed [rpm]	4000		
38.0			Anzugsmoment der Schrauben M _A [Nm] Tightening torque of screws M _A [Nm]	84.0		
83.0			Störkreis [ø mm] Swing circle [ø mm]	95.0		

SKL-450



SKL-525



R	Y	G	
525	310	655	Nennmoment [Nm] Nominal torque [Nm]
1050	620	1310	Maximalmoment [Nm] Max. torque [Nm]
22370	7850	36200	Statische Drehfedersteife [Nm/rad] Static spring stiffness [Nm/rad]
5930	2580	8274	Laterale Federsteife [N/mm] Lateral spring stiffness [N/mm]
0.16	0.23	0.11	Max. lateraler Wellenversatz [mm] Max. lateral shaft misalignment [mm]
0.9	1.0	0.8	Max. angularer Wellenversatz [Grad] Max. angular shaft misalignment [Degree]
+2.1/-1.0			Max. axialer Wellenversatz [mm] Max. axial shaft misalignment [mm]
3600			max. Drehzahl [rpm] max. speed [rpm]
145.0			Anzugsmoment der Schrauben M _A [Nm] Tightening torque of screws M _A [Nm]
106.0			Störkreis [ø mm] Swing circle [ø mm]