

**HA-CO GmbH**

Johann-Roithner-Str. 131

A-4050 Traun

Phone +43 7229 23844

[info@ha-co.at](mailto:info@ha-co.at)

[www.ha-co.at](http://www.ha-co.at)

---

# Scharniere



# Hinges





## Haudenschild Holding AG

### **HA-CO GmbH** Technische Lösungen

Johann-Roithner-Straße 131  
A-4050 Traun  
Tel: +43 7229 23844  
info@ha-co.at  
www.ha-co.at

### **HW-TEC GmbH** Lineartechnik vom Spezialisten

Lidwil 10  
CH-8852 Altendorf  
Tel: +41 55 216 10 50  
hw@hw-tec.ch  
www.hw-tec.ch

### **Haudenschild AG** Kompetenz in Antriebstechnik

Lidwil 10  
CH-8852 Altendorf  
Tel: +41 55 225 40 50  
haud@haudenschild.com  
www.haudenschild.com

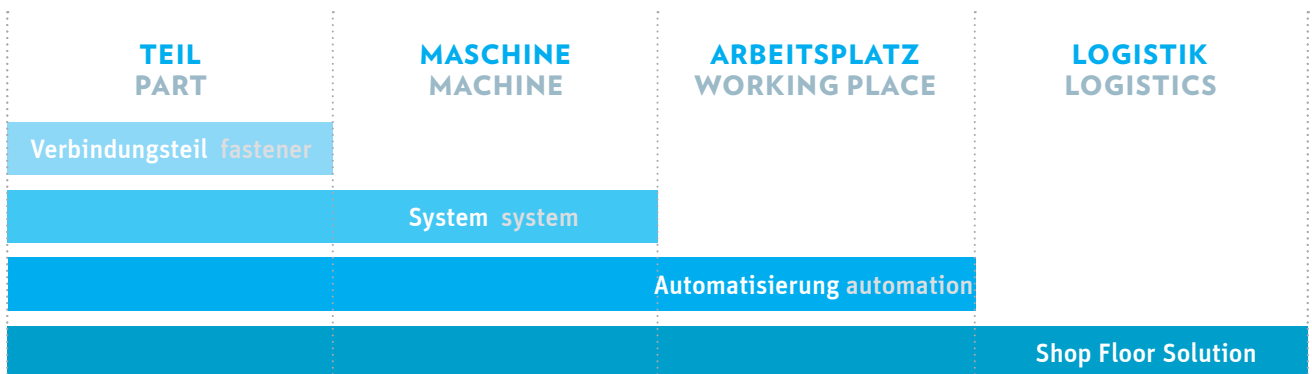
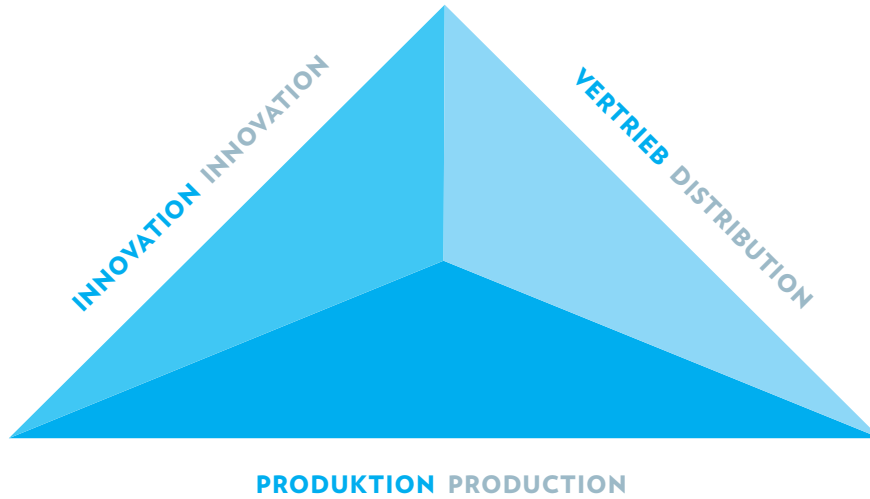
### **HA-CO GmbH** Kupplungen und mehr

Daimlerring 10  
D-63839 Kleinwallstadt  
Tel: +49 602 265 58 10  
info@ha-co.eu  
www.ha-co.eu

**Erfahrung die Ihnen zugute kommt**  
**Zuverlässig und sicher**  
**Nutzen Sie unsere Synergien zu Ihrem Vorteil**  
**Experience for your benefit**  
**Reliable and precise**  
**Use our synergies for your advantage**

Wir verbinden kreative Lösungen mit präziser technischer Umsetzung und bilden so die Schnittstelle zwischen Innovation, Produktion und Vertrieb.

We combine creative solutions with precise technical execution, so providing the interface between innovation, production and distribution.



## INNOVATIVE TECHNOLOGY

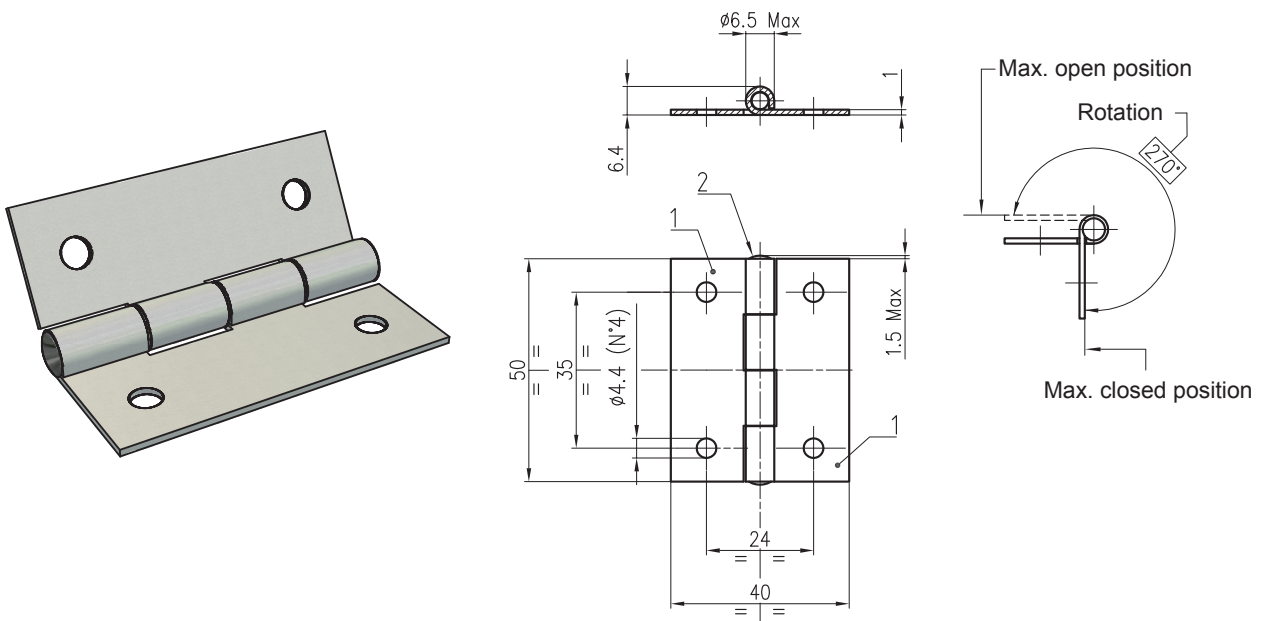
Automotive Automotive	Kunststofftechnik Plastics
Bahn, Truck, Trailer Train, Truck, Trailer	Luftfahrt Aerospace
Elektronik Electronics	Hydraulik Hydraulics
Medizintechnik Medical technology	Holzverarbeitung Wood processing
Blechbearbeitung Metal processing	Maschinenbau Mechanical engineering



## PRODUKTÜBERSICHT

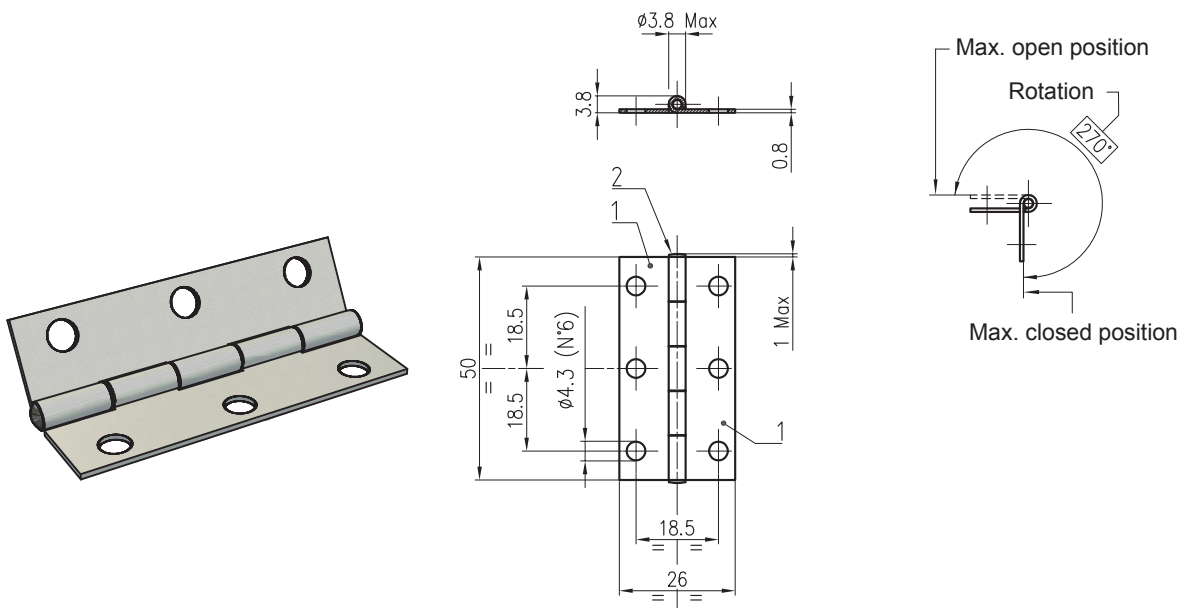
HNG.4050.AZ .....	Seite 4
HNG.2650.AZ .....	Seite 4
HNG.6335.AZ .....	Seite 5
HNG.4520.* .....	Seite 5
HNG.0334.AZ .....	Seite 6
HNG.206.3 .....	Seite 7
HNG.206.4 .....	Seite 7
HNG.097MP.* .....	Seite 8
HNG.212.* .....	Seite 8
HNG.205.1* .....	Seite 9
HNG.205.2* .....	Seite 9
HNG.212.3B.* .....	Seite 10
HNG.213.2 .....	Seite 10
HNG.218.9119.BP .....	Seite 11
HNG.203.3* .....	Seite 11
HNG.203.1* .....	Seite 12
HNG.203.4* .....	Seite 12
HNG.203.2 .....	Seite 13
HNG.299 .....	Seite 13
HNG.240.* .....	Seite 14
HNG.251 .....	Seite 14
HNG.219.* .....	Seite 15
HNG.295 .....	Seite 15
HNG.4040.* .....	Seite 16
HNG.4040P.BK .....	Seite 16
HNG.5050.* .....	Seite 17
HNG.5050P.* .....	Seite 17
HNG.6060.* .....	Seite 18
HNG.6464.* .....	Seite 18
HNG.214.* .....	Seite 19
HNG.272 .....	Seite 19
HNG.42100.* - Hinge with frictioned rotation.....	Seite 20
HNG.30105.* .....	Seite 21
HNG.21480.* .....	Seite 22
HNG.7050S.AZ - Hinge with frictioned rotation .....	Seite 23
HNG.50105.AZ - Hinge with frictioned rotation .....	Seite 24
HNG.7083.* .....	Seite 25
HNG.6059.* .....	Seite 26
HNG.250.* .....	Seite 26
HNG.275.1 .....	Seite 27
HNG.275.2 .....	Seite 27
HNG.7002.AZ .....	Seite 28
HNG.268.* .....	Seite 28
HNG.208 .....	Seite 29
HNG.225.3* .....	Seite 29
HNG.11DX.AZ .....	Seite 30
HNG.11SX.AZ .....	Seite 30
HNG.263 .....	Seite 30
HNG.248 .....	Seite 31

## HNG.4050.AZ



Ref	Part description	Material - Finishing
1	Flange, thickness 1,0 mm (2)	Fe360 - White zinc Cr6 free
2	Riveted pin	Steel - White zinc Cr6 free

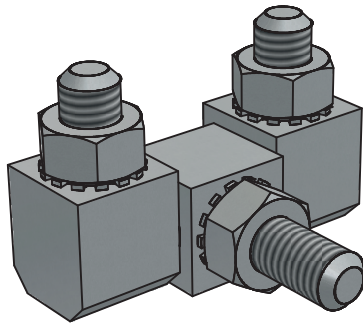
## HNG.2650.AZ



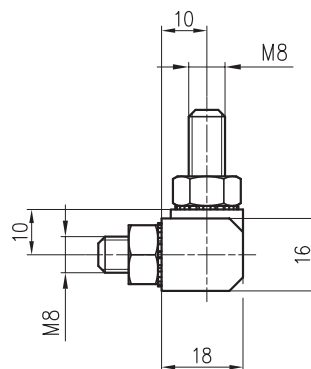
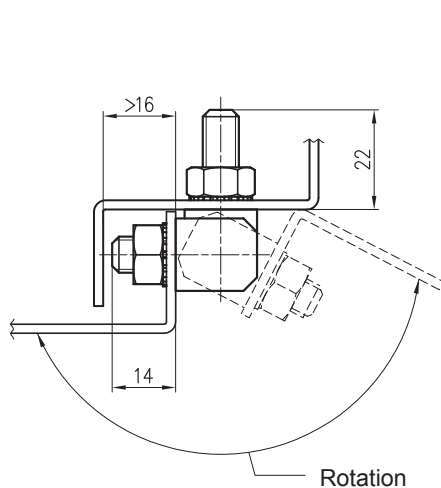
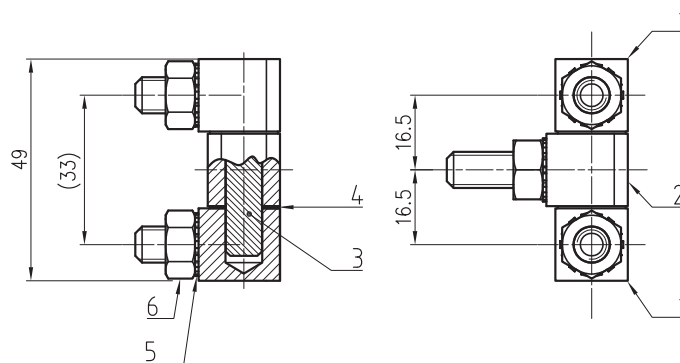
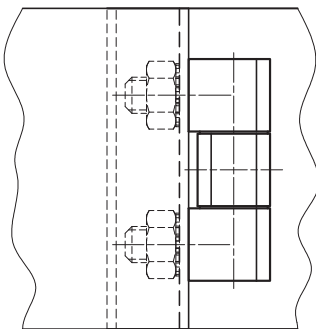
Ref	Part description	Material - Finishing
1	Flange, thickness 0,8 mm (2)	Fe360 - White zinc Cr6 free
2	Riveted pin	Steel - White zinc Cr6 free



## HNG.0334.AZ



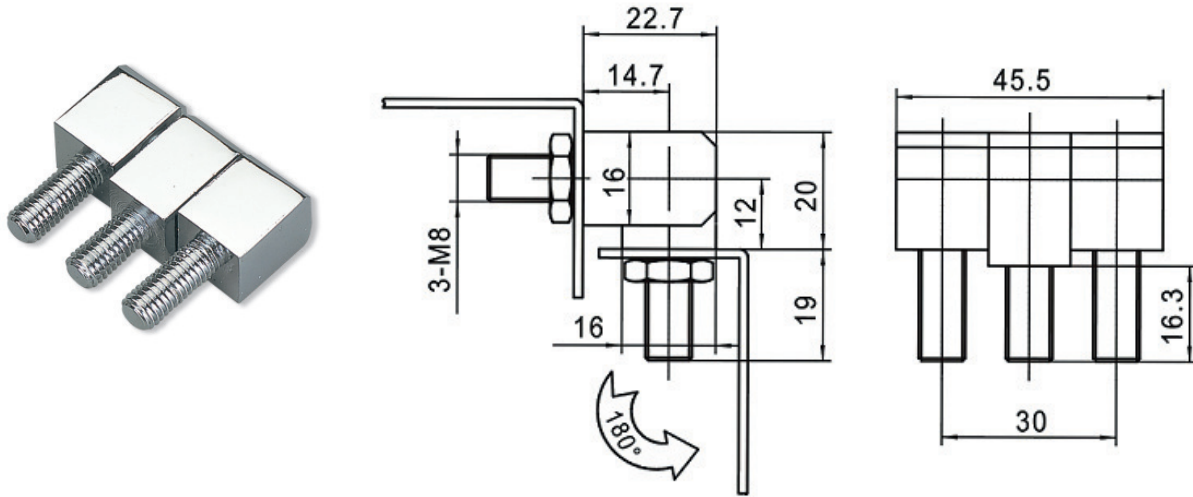
Installation example



Ref	Part description	Material - Finishing
1	Flange with stud M8X14	Steel - White zinc Cr6 free
2	Flange with stud M8X20	Steel - White zinc Cr6 free
3	Rotation pin	Stainless steel
4	Spacer	Stainless steel
5	Washer M8	Steel - White zinc Cr6 free
6	Exagonal nut M8	Steel - White zinc Cr6 free

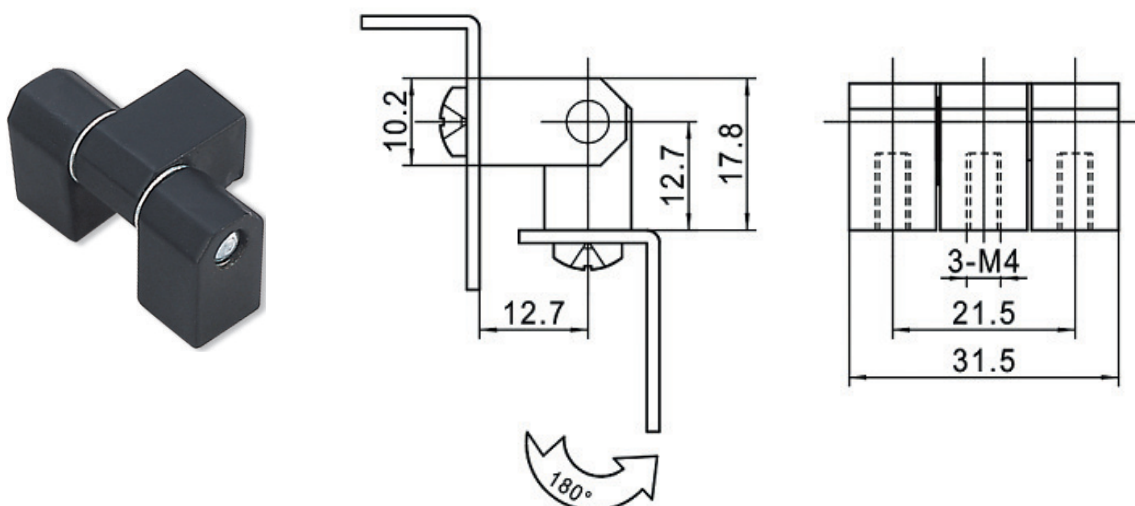


## HNG.206.3



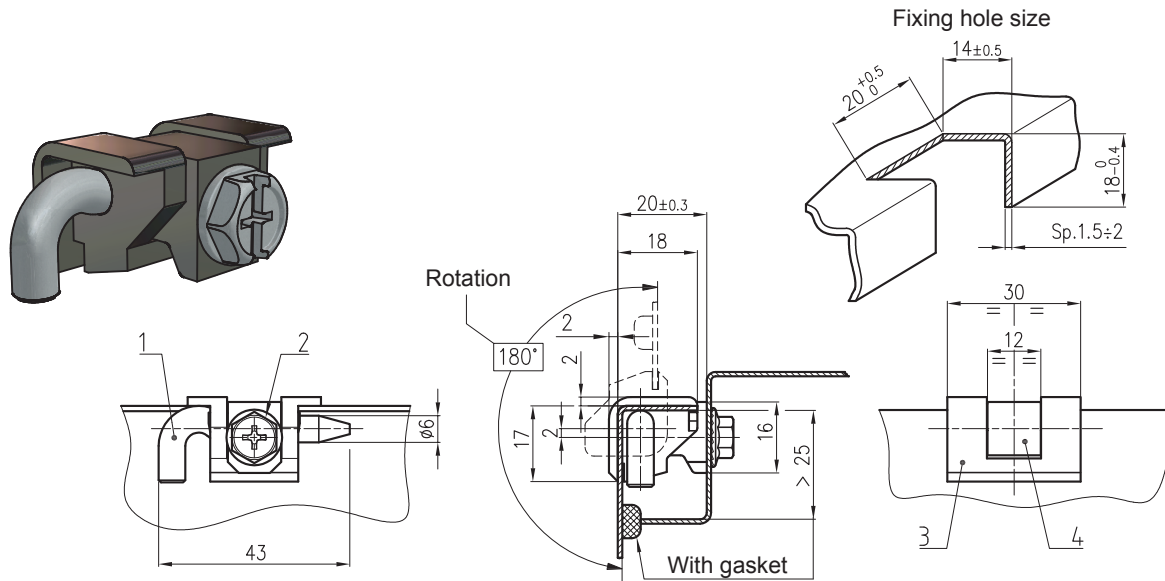
Ref	Part description	Material - Finishing
1	Hinge	Steel - Bright chrome
2	Stud	Steel - White zinc Cr6 free

## HNG.206.4



Ref	Part description	Material - Finishing
1	Hinge	Zinc alloy - Epoxy black
2	Stud	Steel - White zinc Cr6 free

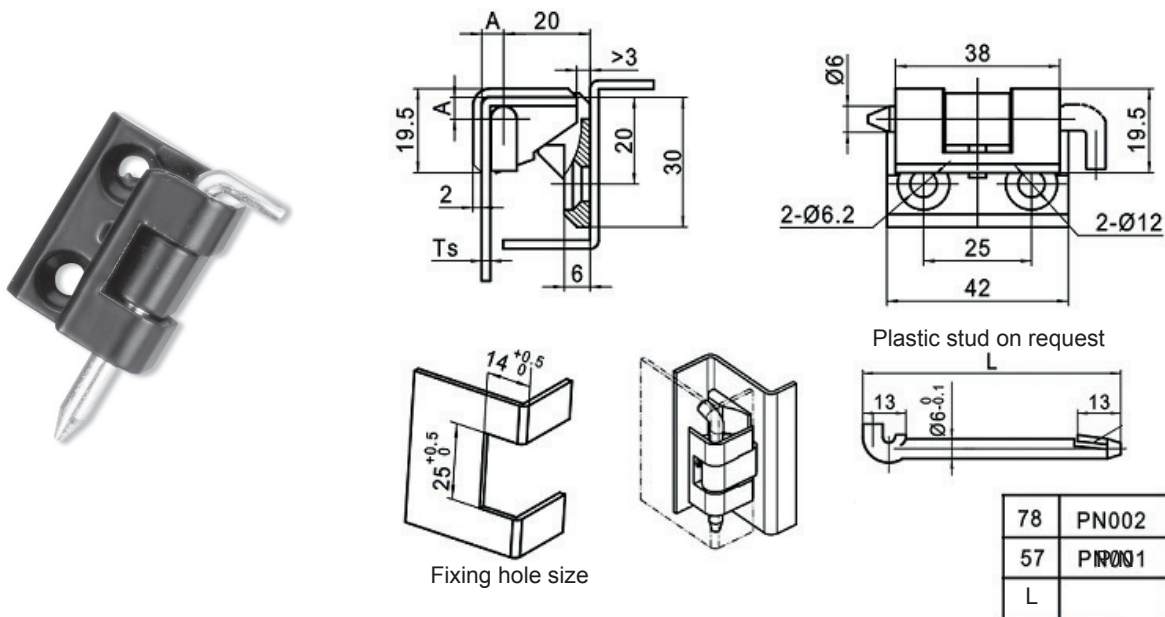
### HNG.097MP.\*



Insert \* material "code" into hinge part number

Ref	Part description	Material - Finishing (AC)	Material - Finishing (BK)
1	Fixing stud	Steel 4.8 - White zinc Cr6 free	Steel 4.8 - White zinc Cr6 free
2	Screw	Steel 4.8 - White zinc Cr6 free	Steel 4.8 - White zinc Cr6 free
3	Base	Zinc alloy - Bright chrome	Zinc alloy - Epoxy black
4	Bracket	Zinc alloy - Bright chrome	Zinc alloy - Epoxy black

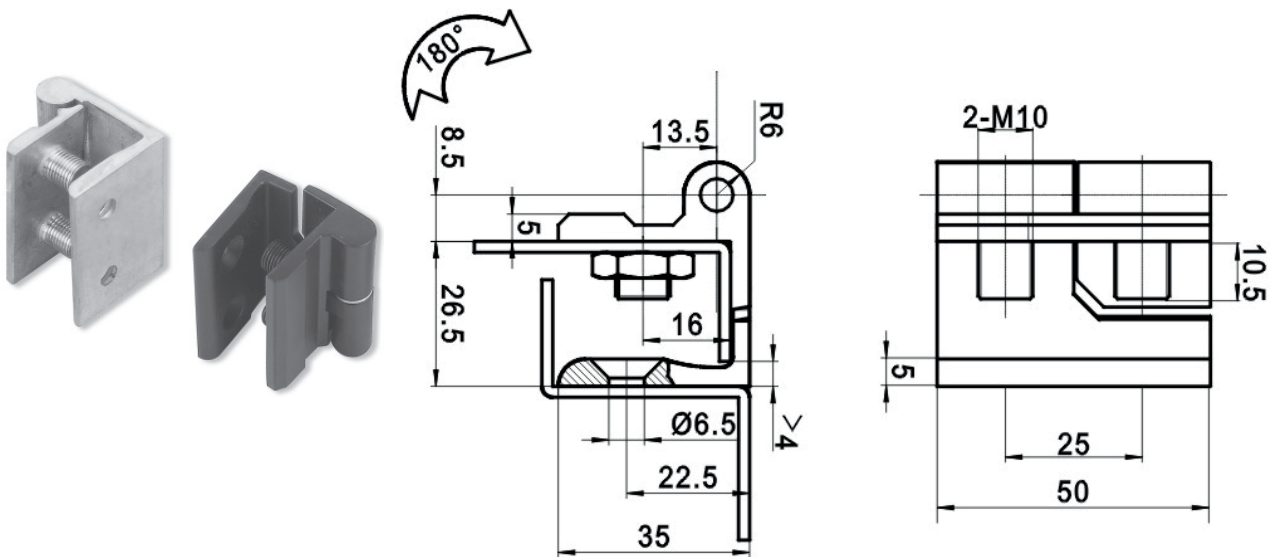
### HNG.212.\*



78	PN002
57	PIR001
L	

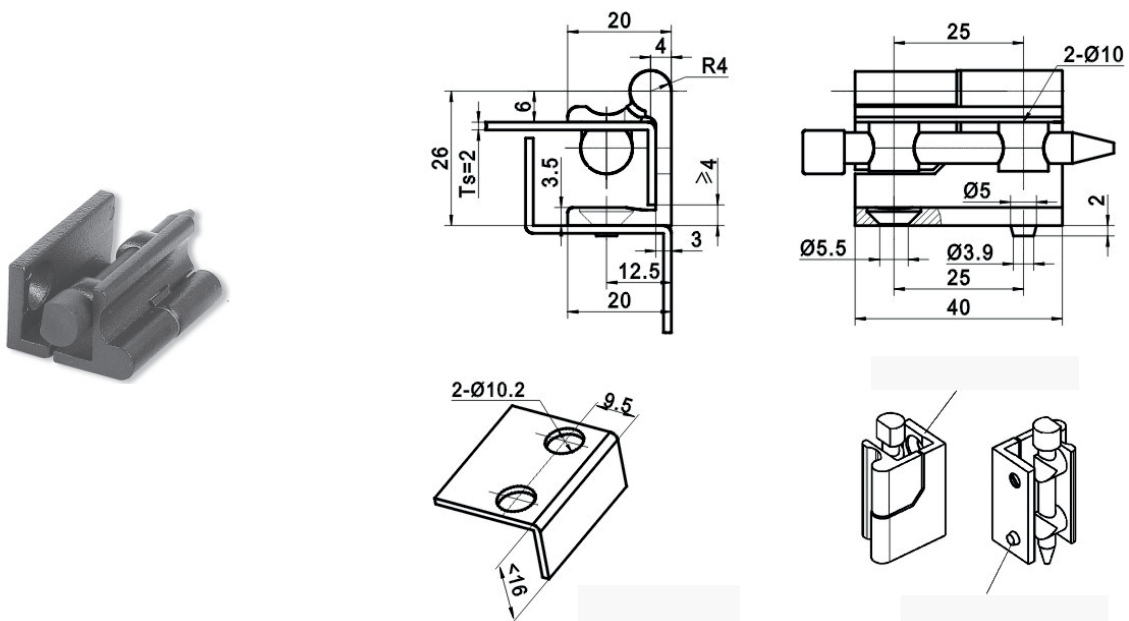
Hinge part number	Ts	A	Ref	Part description	Material - Finishing
HNG.212.1	2	5,1	1	Hinge	Zinc alloy - Epoxy black
HNG.212.2	3	6,1	2	Stud	Steel - Nickel plated
HNG.212.3	1,5	4,6			

## HNG.205.1\*



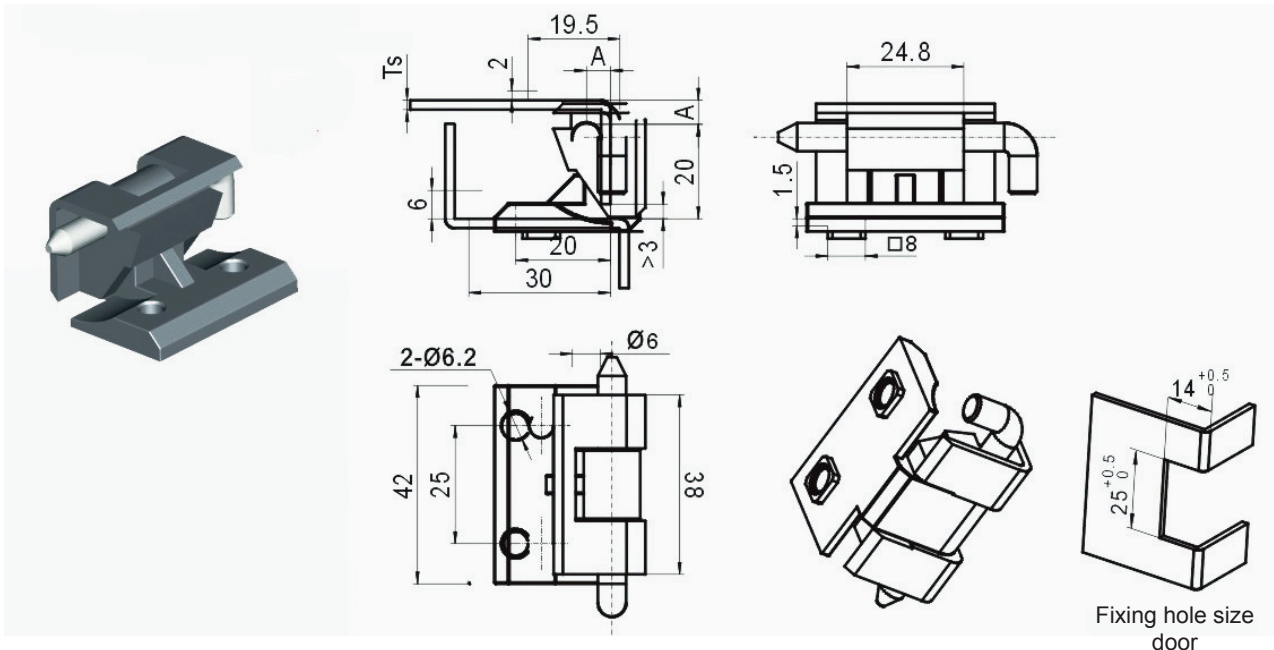
Hinge part number	Type	Material - Finishing
HNG.205.1Z	Left	Zinc alloy - Epoxy black
HNG.205.1Y	Right	Zinc alloy - Epoxy black

## HNG.205.2\*



Hinge part number	Type	Material - Finishing
HNG.205.2Z	Left	Zinc alloy - Epoxy black
HNG.205.2Y	Right	Zinc alloy - Epoxy black

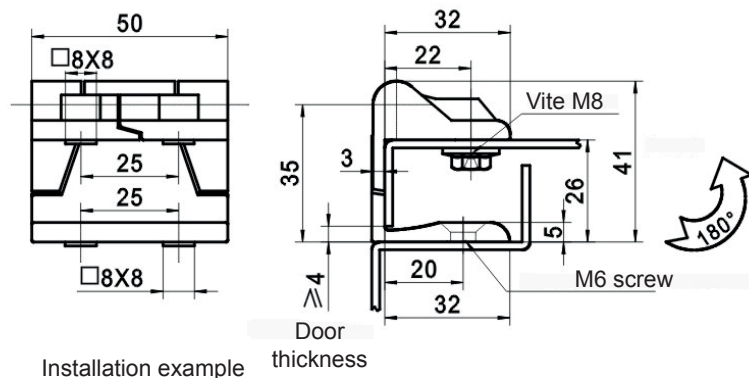
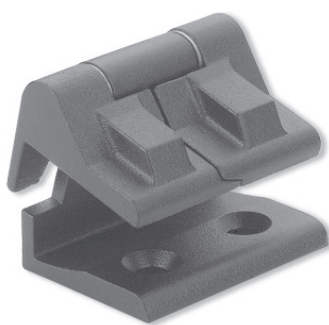
### HNG.212.3B.\*



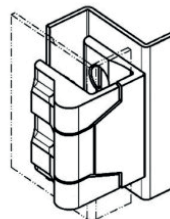
Hinge part number	Ts	A
HNG.212.3B.1	1,5	4,6
HNG.212.3B.2	3	6,1
HNG.212.3B.3	2	5,1

Ref	Part description	Material - Finishing
1	Hinge	Zinc alloy - Epoxy black
2	Stud	Steel - Nickel plated

### HNG.213.2



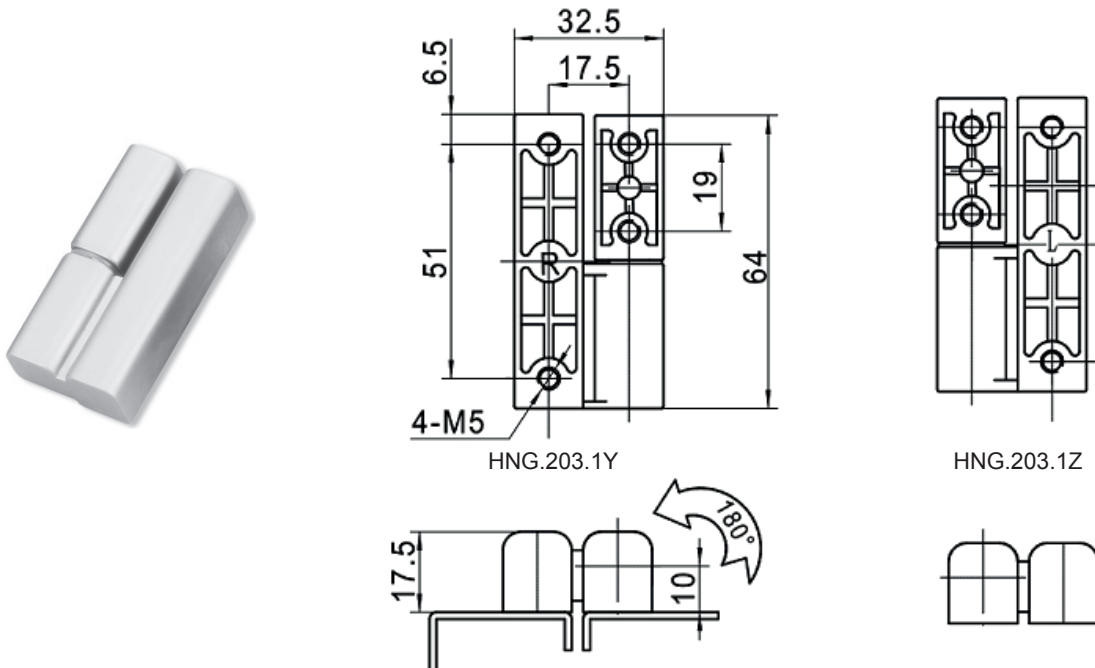
Installation example



Ref	Part description	Material - Finishing
1	Hinge	Zinc alloy - Bright chrome
2	Stud	Steel - White zinc Cr6 free

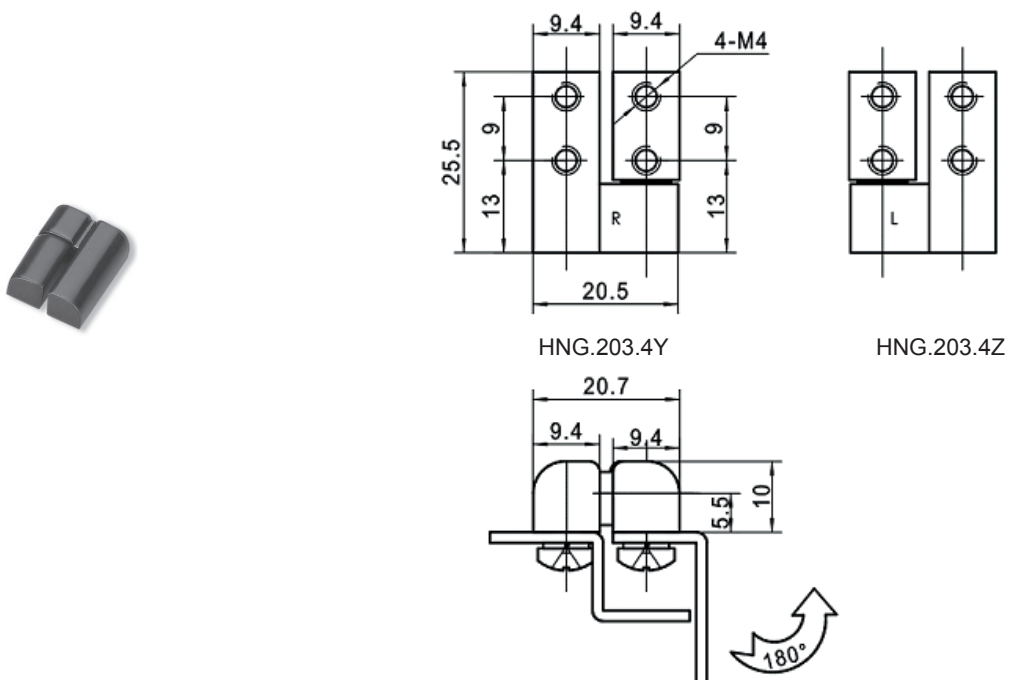


## HNG.203.1\*



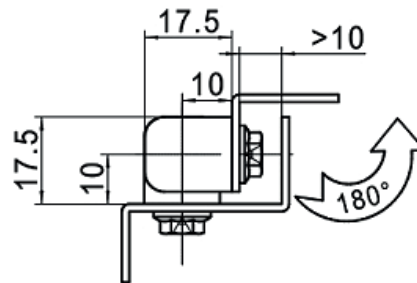
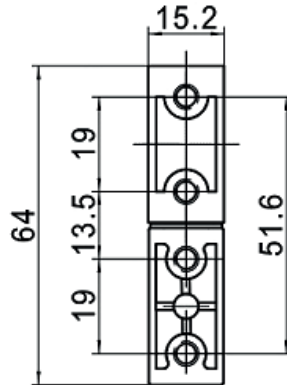
Hinge part number	Rotation	Ref	Part description	Material - Finishing
HNG.203.1Z	Left	1	Hinge	Zinc alloy - Grey chrome
HNG.203.1Y	Right	2	Stud	Steel - White zinc Cr6 free
		3	Washer	Nylon

## HNG.203.4\*



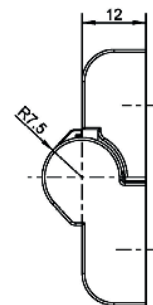
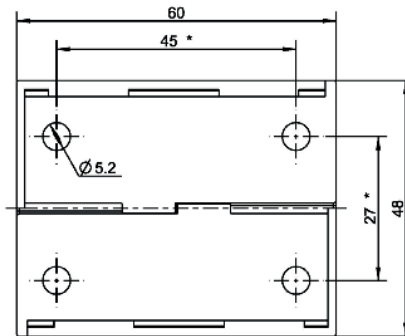
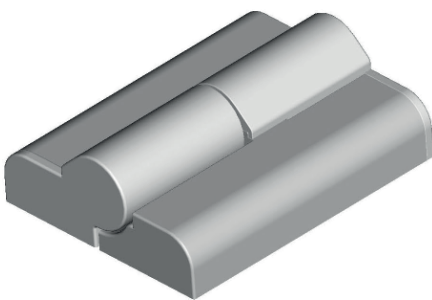
Hinge part number	Rotation	Ref	Part description	Material - Finishing
HNG.203.4Z	Left	1	Hinge	Zinc alloy - Epoxy black
HNG.203.4Y	Right	2	Stud	Steel - White zinc Cr6 free
		3	Washer	Nylon

## HNG.203.2



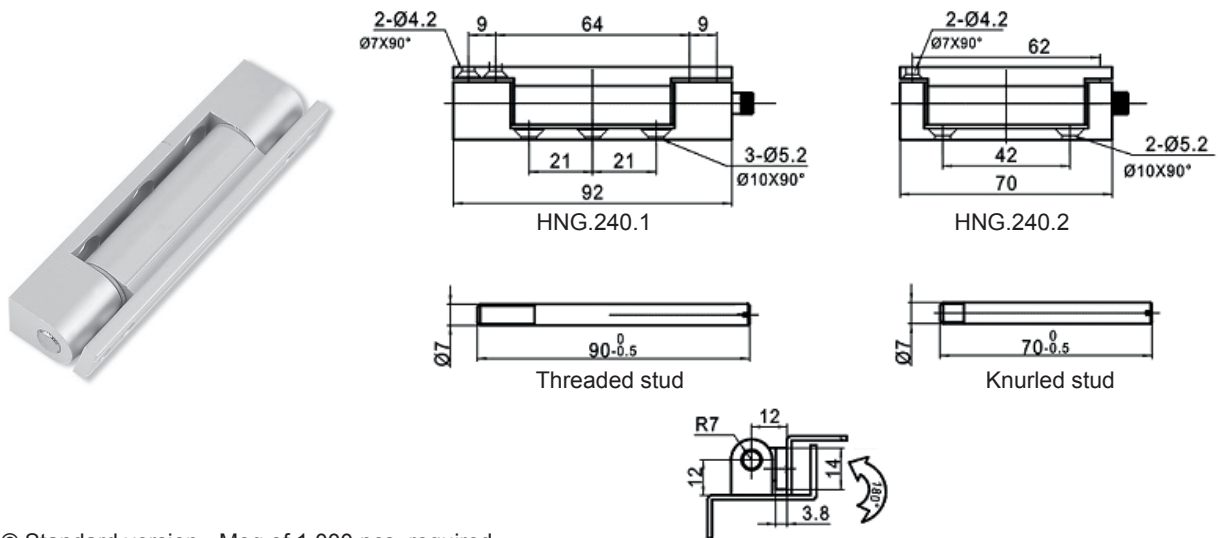
Ref	Part description	Material - Finishing
1	Hinge	Zinc alloy - Epoxy black

## HNG.299



Ref	Part description	Material - Finishing
1	Hinge	Zinc alloy - Bright chrome

## HNG.240.\*

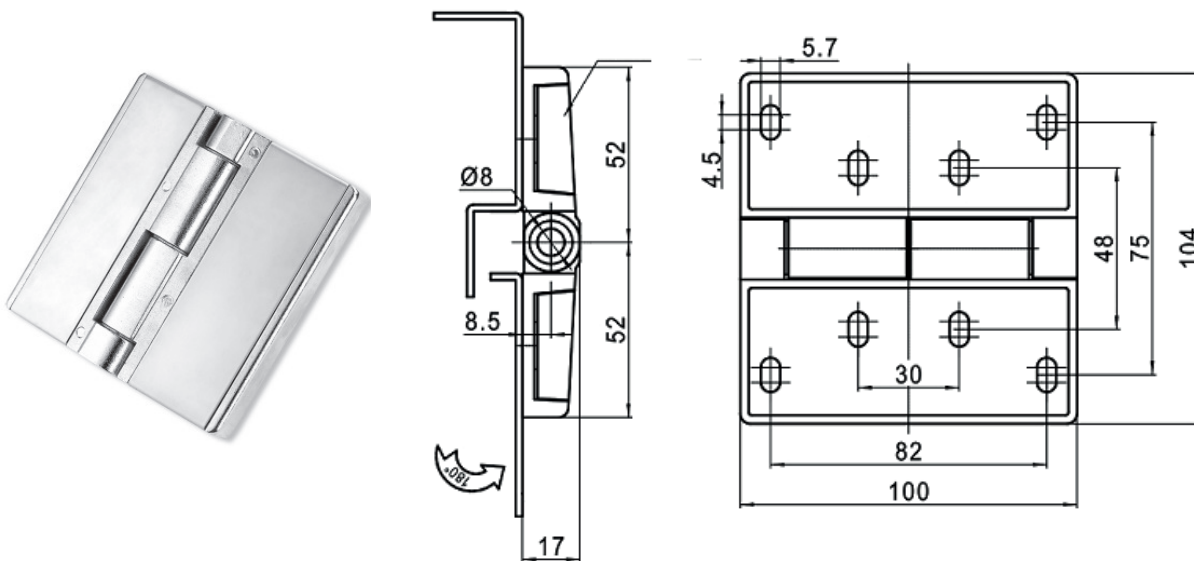


© Standard version - Moq of 1.000 pcs. required for non standard version

Hinge part number	Stud type
HNG.240.1 ©	Knurled
HNG.240.1D	Threaded
HNG.240.2 ©	Knurled
HNG.240.2D	Threaded

Ref	Part description	Material - Finishing
1	Hinge	Alluminum - Epoxy black
2	Stud	Steel - Nickel plated

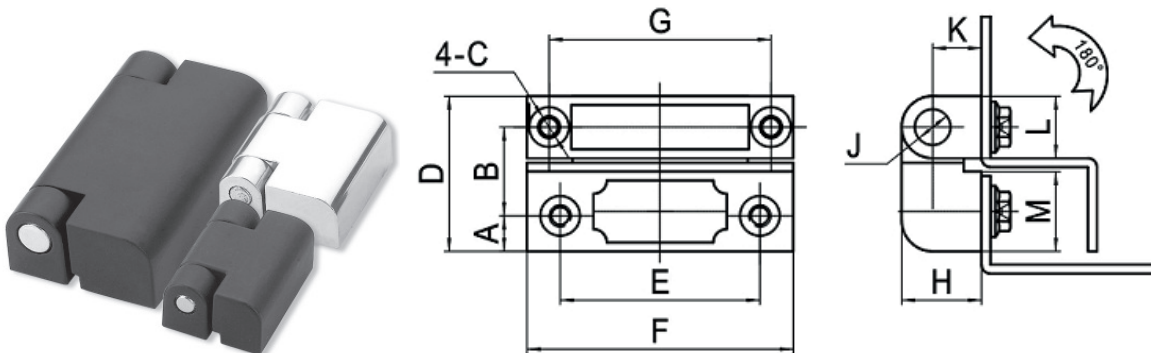
## HNG.251



Ref	Part description	Material - Finishing
1	Hinge	Zinc alloy - Bright chrome
2	Stud	Stainless steel
3	Cover	Stainless steel

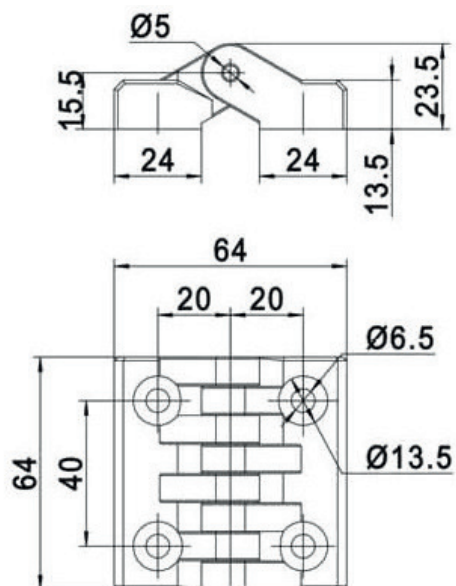


## HNG.219.\*



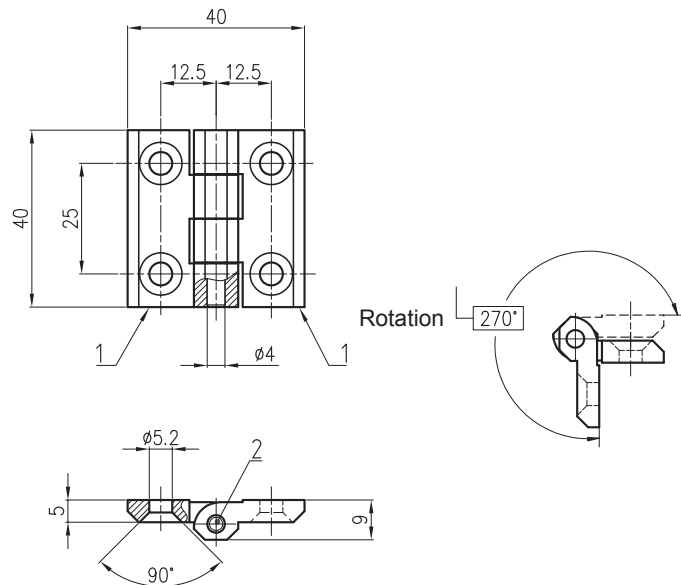
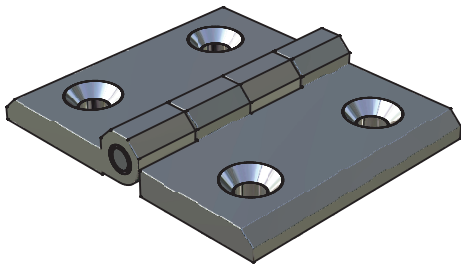
Hinge part number	A	B	C	D	E	F	G	H	J	K	L	M	Material - Finishing
HNG.219.1	8	20	M5	35	45	60	50	18	Ø 8	11	14	18	Zinc alloy - Epoxy black
HNG.219.1R	8	20	M5	35	45	60	50	18	Ø 8	11	14	18	Zinc alloy - Epoxy black
HNG.219.2	4	13	M4	22	22	30	22	13	Ø 5	8	10	9	Zinc alloy - Epoxy black
HNG.219.2R	4	13	M4	22	22	30	22	13	Ø 5	8	10	9	Zinc alloy - Epoxy black
HNG.219.3	4	18,5	M4	27,5	22	30	22	13	Ø 5	8	10	14,5	Zinc alloy - Epoxy black

## HNG.295



Ref	Part description	Material - Finishing
1	Hinge	Black plastic
2	Stud	Steel - White zinc Cr6 free

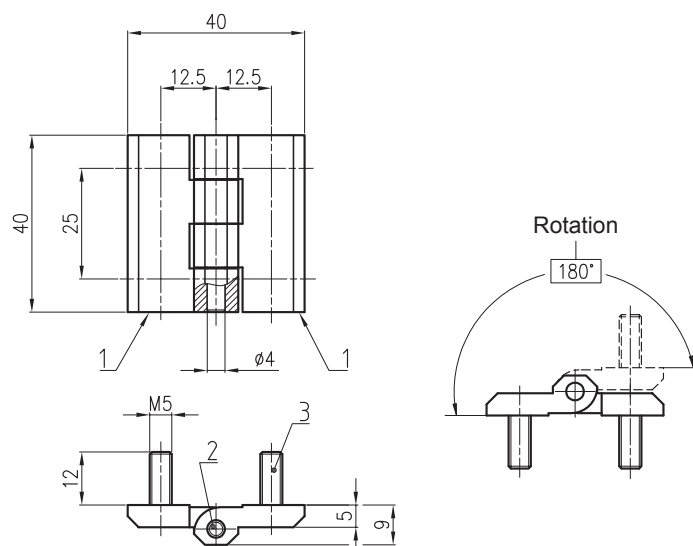
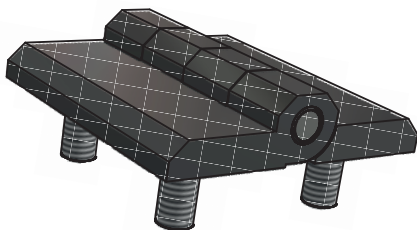
## HNG.4040.\*



Insert \* material "code" into hinge part number

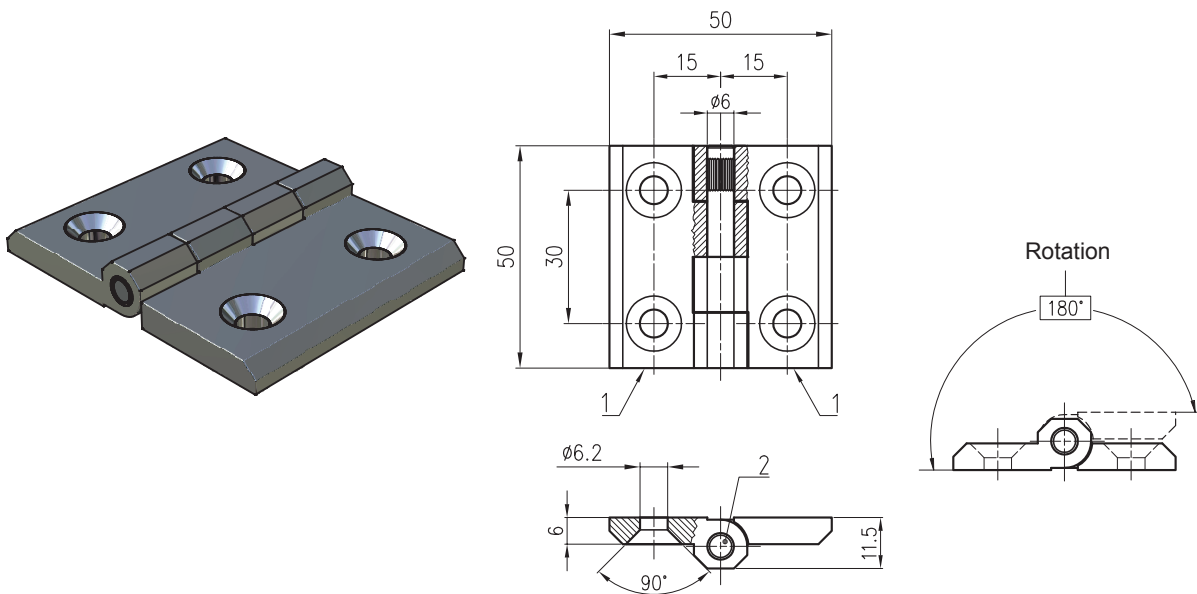
Ref	Part description	Material - Finishing (AC)	Material - Finishing (BK)	Material - Finishing (BP)
1	Flange (2)	Zinc alloy - Bright chrome	Zinc alloy - Black powder coated	AISI304

## HNG.4040P.BK



Ref	Part description	Material - Finishing
1	Flange with M6 stud (2)	Zinc alloy - Black powder coated
2	Rotation pin	AISI303
3	M6 threaded stud	AISI304

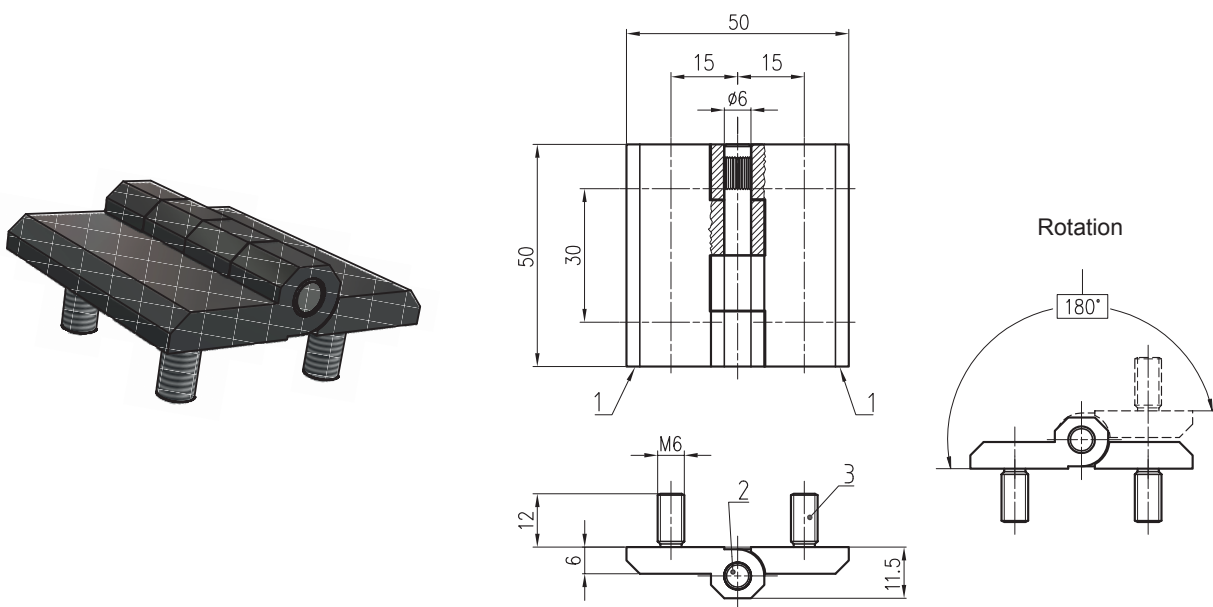
## HNG.5050.\*



Insert \* material "code" into hinge part number

Ref	Part description	Material - Finishing (AC)	Material - Finishing (BK)	Material - Finishing (BP)
1	Flange (2)	Zinc alloy - Bright chrome	Zinc alloy - Black powder coated	AISI304

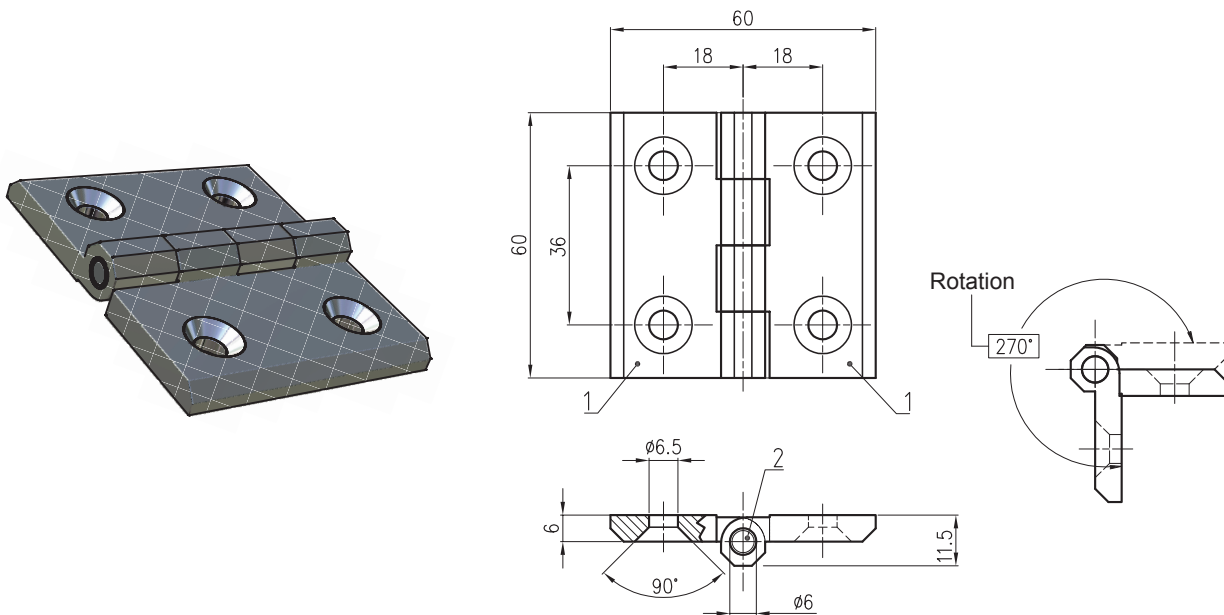
## HNG.5050P.\*



Insert \* material "code" into hinge part number

Ref	Part description	Material - Finishing (AC)	Material - Finishing (BK)
1	Flange with M6 stud (2)	Zinc alloy - Bright chrome	Zinc alloy - Black powder coated
2	Rotation pin	AISI303	AISI303
3	M6 threaded stud	AISI304	AISI304

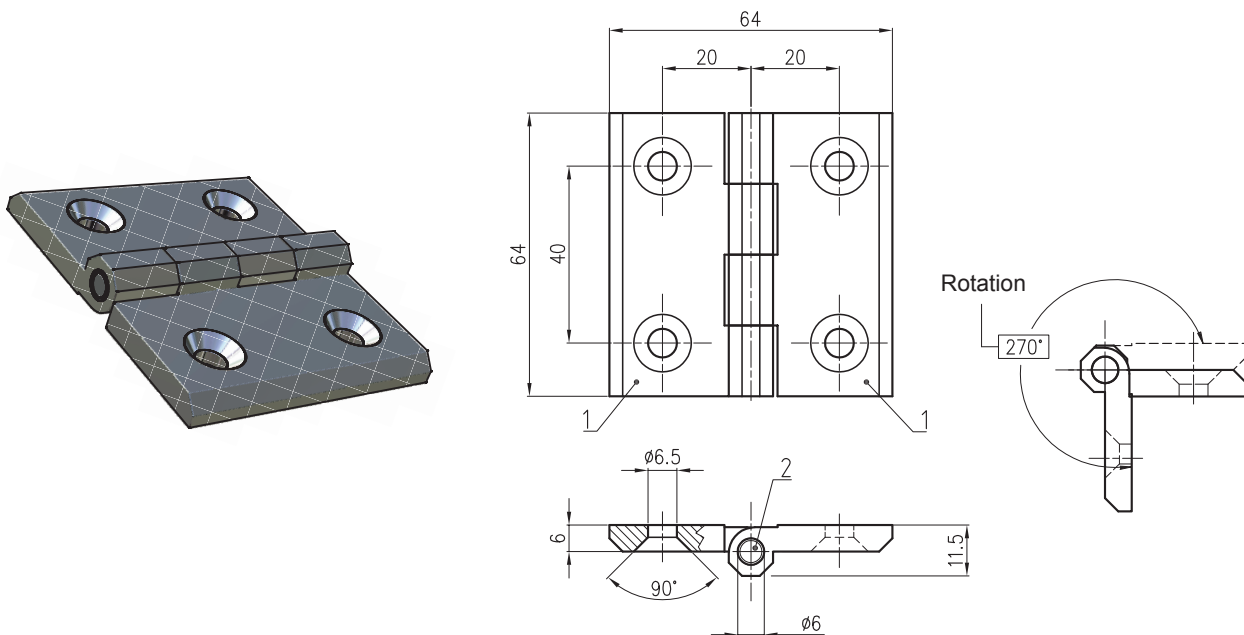
## HNG.6060.\*



Insert \* material "code" into hinge part number

Ref	Part description	Material - Finishing (AC)	Material - Finishing (BK)
1	Flange (2)	Zinc alloy - Bright chrome	Zinc alloy - Black powder coated
2	Rotation pin	AISI303	AISI303

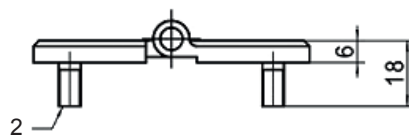
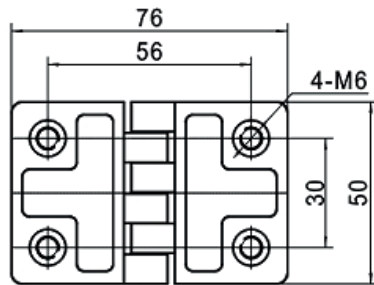
## HNG.6464.\*



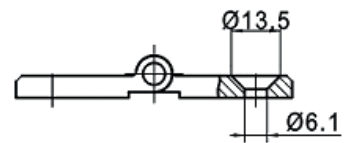
Insert \* material "code" into hinge part number

Ref	Part description	Material - Finishing (AC)	Material - Finishing (BK)
1	Flange (2)	Zinc alloy - Bright chrome	Zinc alloy - Black powder coated
2	Rotation pin	AISI303	AISI303

## HNG.214.\*



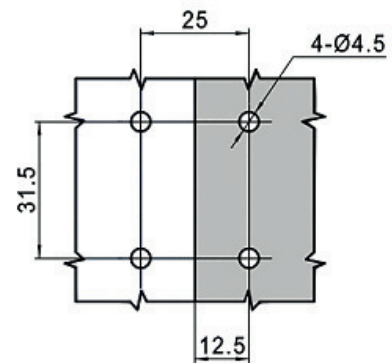
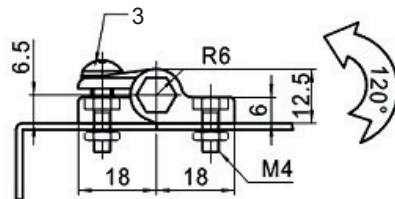
HNG.214.1



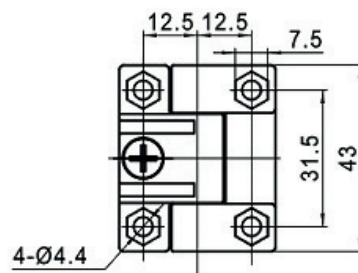
HNG.214.2

Hinge part number	Type	Ref	Part description	Material - Finishing
HNG.214.1	Threaded studs	1	Hinge	Zinc alloy - Epoxy black
HNG.214.2	Holes	2	Stud	Steel - Epoxy black

## HNG.272

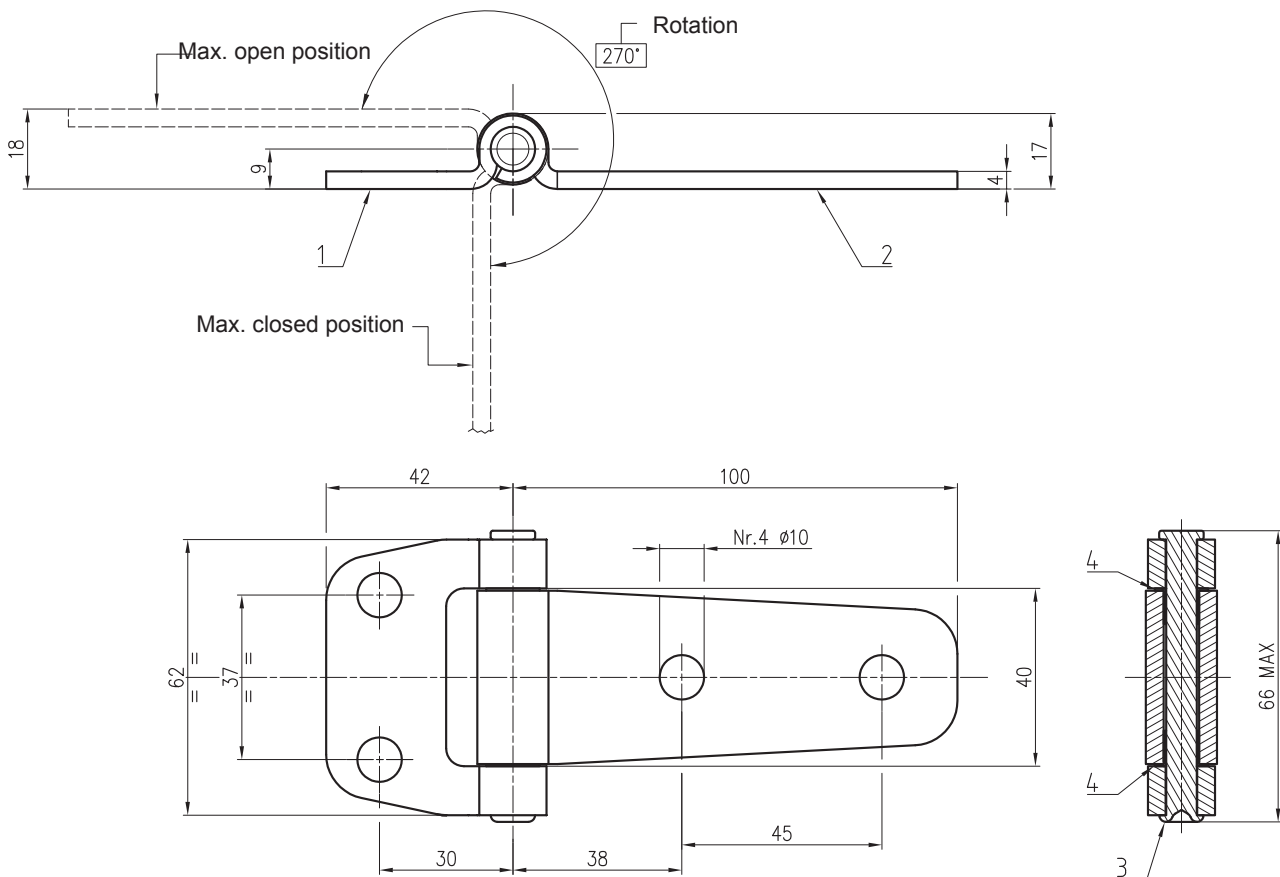
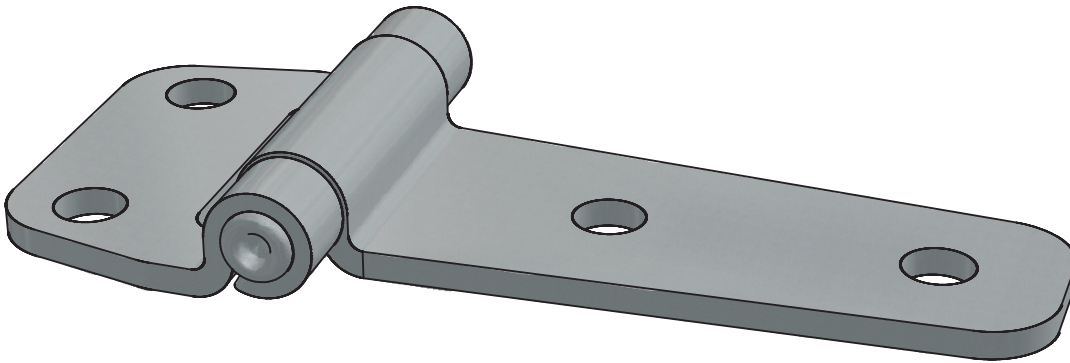


Fixing hole size



Ref	Part description	Material - Finishing
1	Hinge	Black plastic
2	Stud	Black plastic
3	Screws and nuts	Steel - White zinc Cr6 free

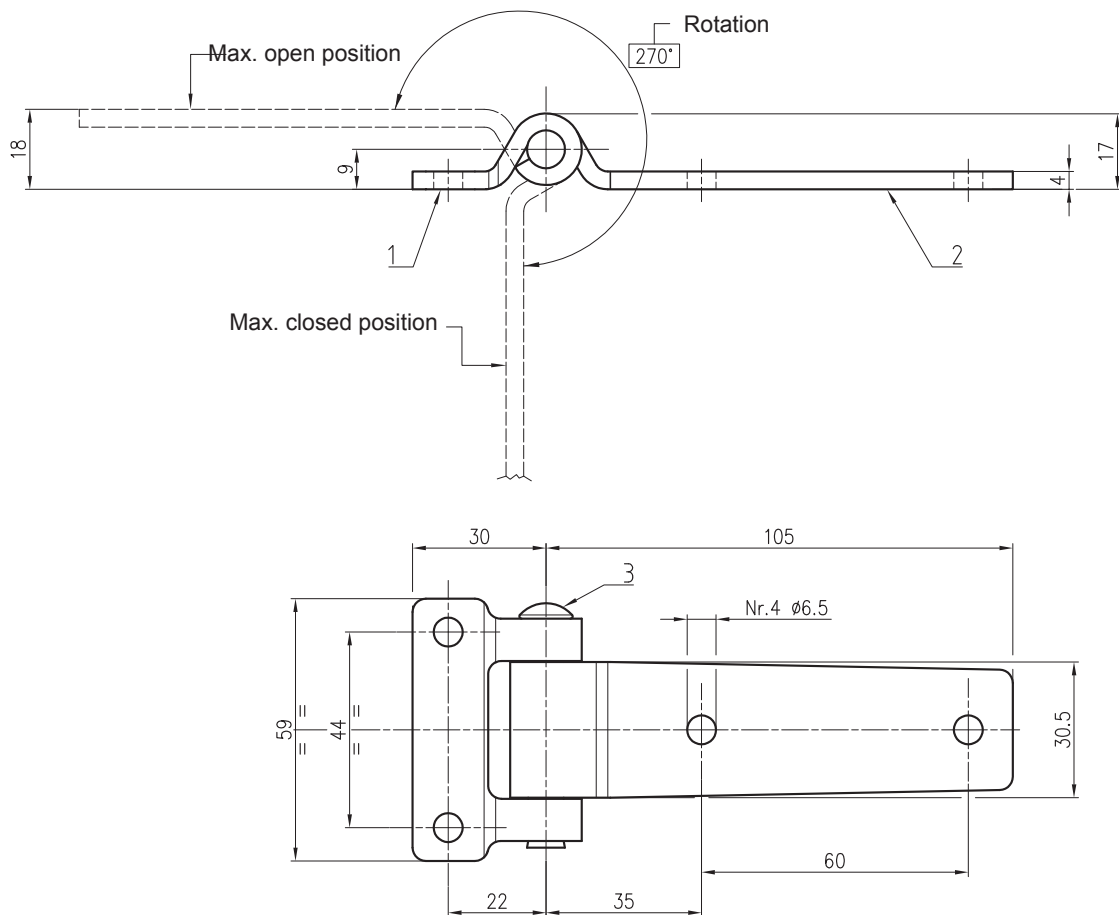
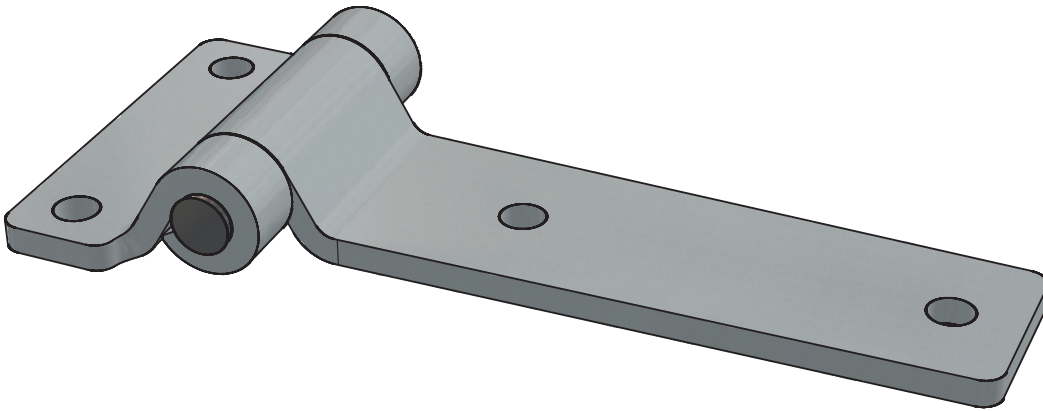
## HNG.42100.\* HINGE WITH FRICTIONED ROTATION



Insert \* material "code" into hinge part number

Ref	Part description	Material - Finishing (AZ)	Material - Finishing (BK)
1	Short flange	Fe360 - White zinc Cr6 free	Fe360 - White zinc Cr6 free
2	Long flange	Fe360 - White zinc Cr6 free	Fe360 - White zinc Cr6 free
3	Stud	AISI304	AISI304
4	Grommet (2)	Poliammide	Poliammide

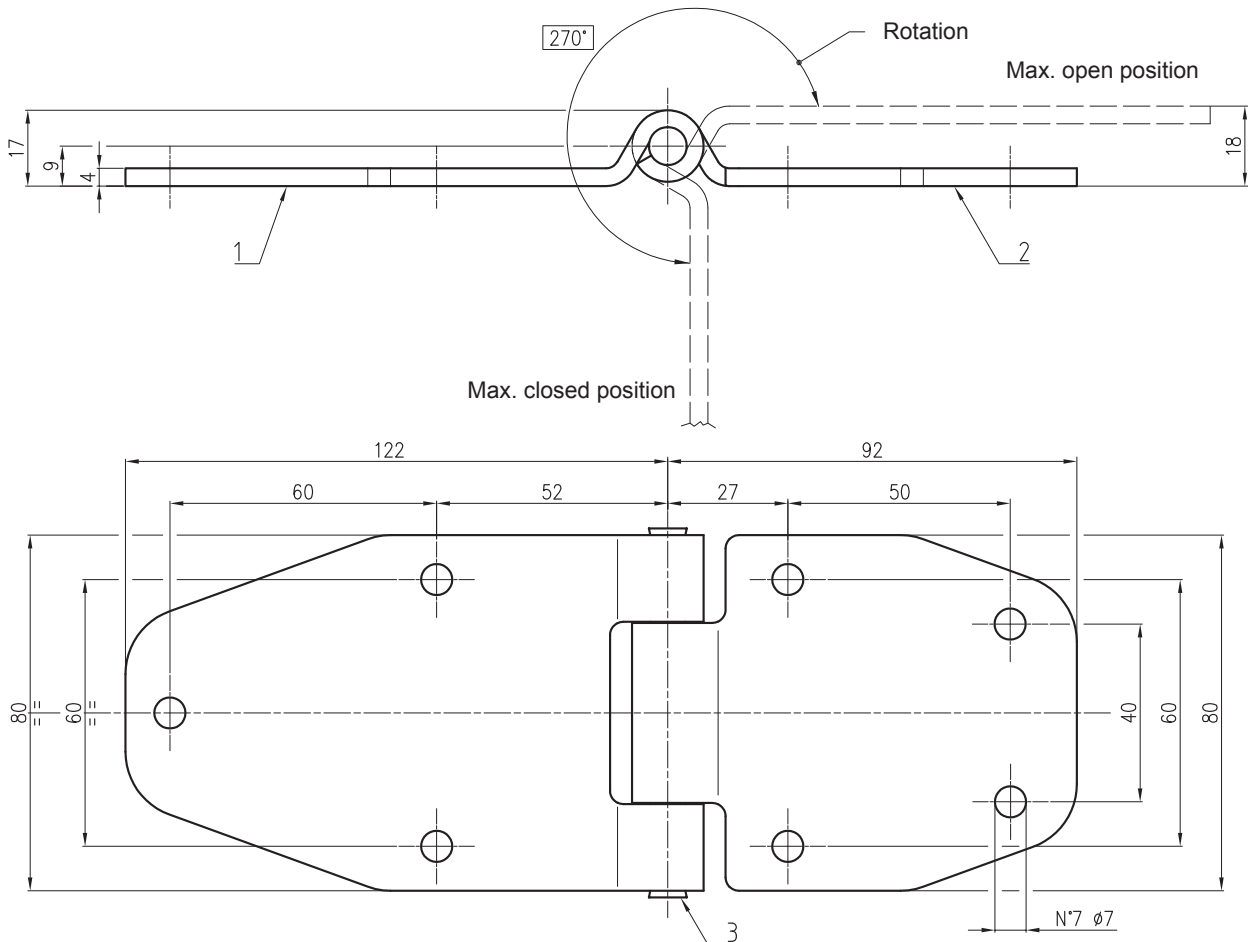
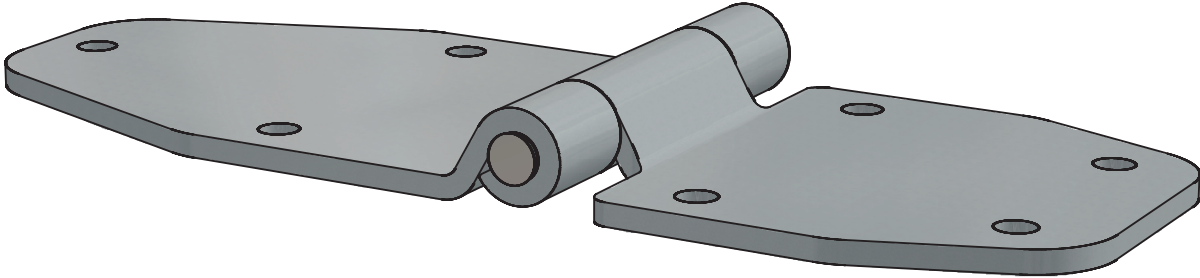
### HNG.30105.\*



Insert \* material "code" into hinge part number

Ref	Part description	Material - Finishing (AZ)	Material - Finishing (BP)
1	Short flange	Fe360 - White zinc Cr6 free	AISI304 - Polished
2	Long flange	Fe360 - White zinc Cr6 free	AISI304 - Polished
3	Stud	AISI304	AISI304

## HNG.21480.\*

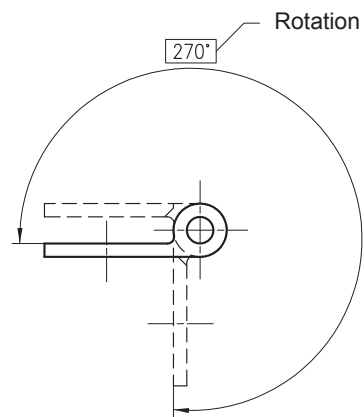
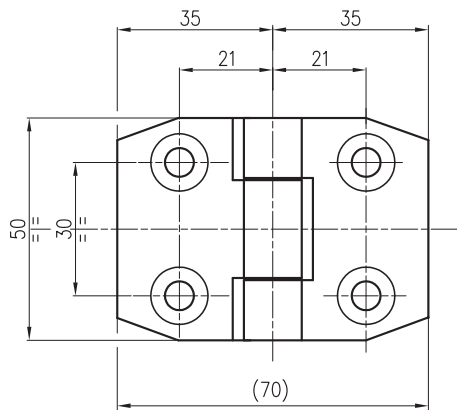
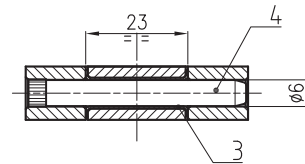
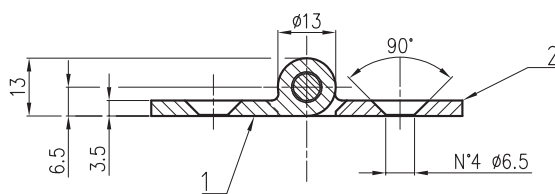
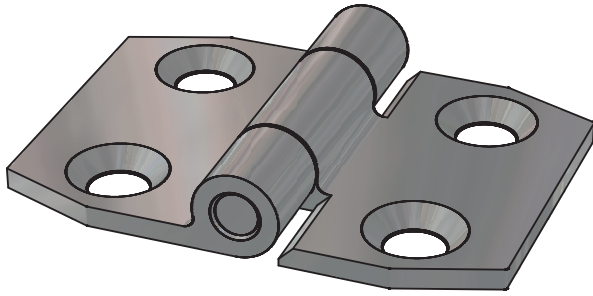


Insert \* material "code" into hinge part number

Ref	Part description	Material - Finishing (AZ)	Material - Finishing (BP)
1	Long flange	Fe360 - White zinc Cr6 free	AISI304 - Polished
2	Short flange	Fe360 - White zinc Cr6 free	AISI304 - Polished
3	Stud	AISI304	AISI304

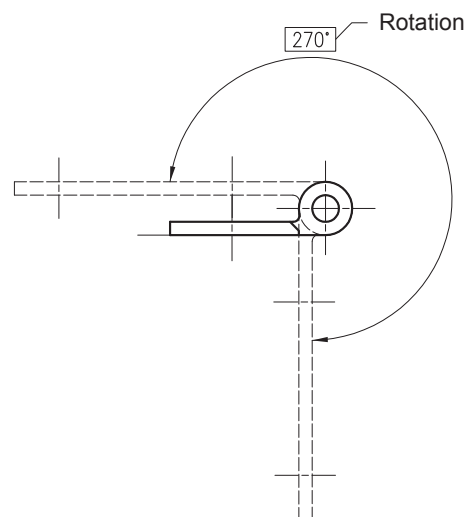
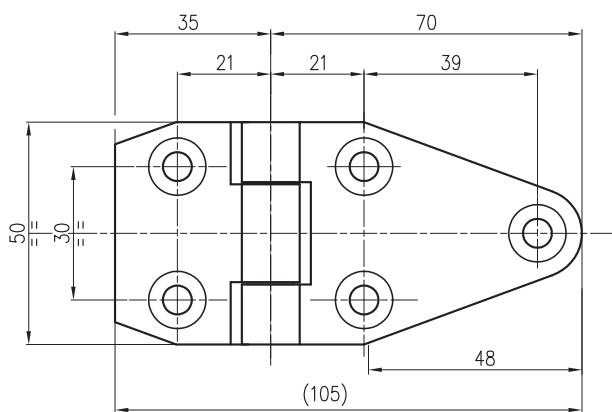
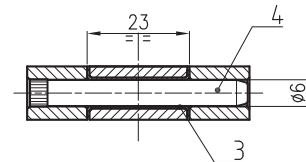
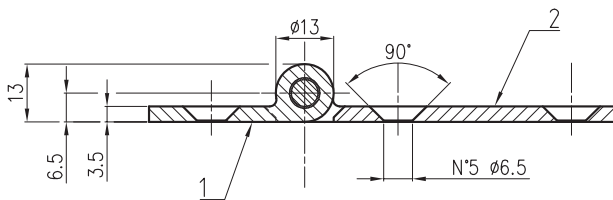
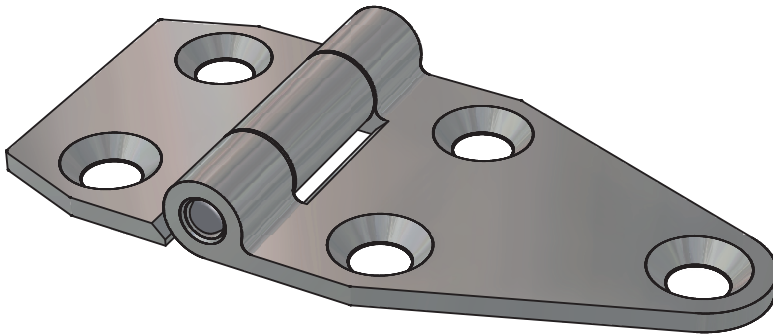


## HNG.7050S.AZ HINGE WITH FRICTIONED ROTATION



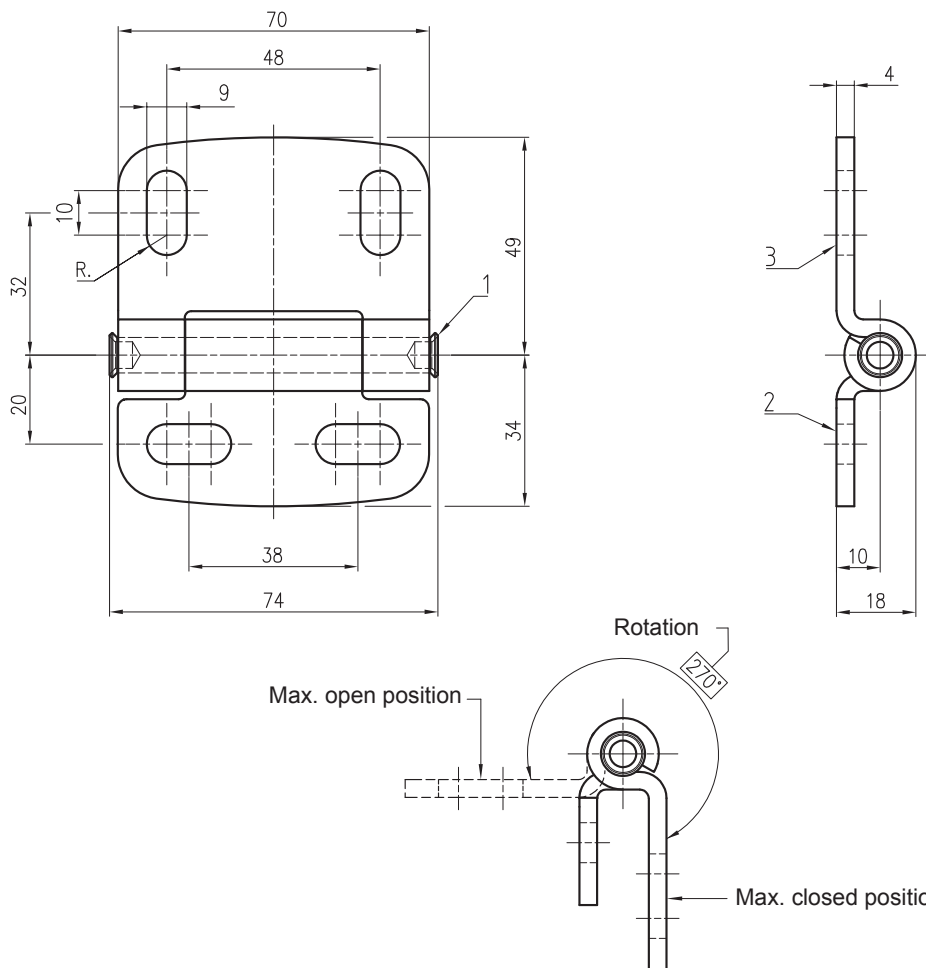
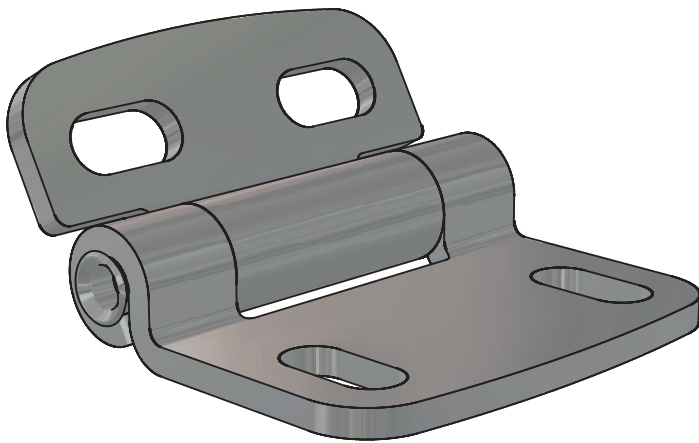
Ref	Part description	Material - Finishing (AZ)
1	Central flange	C30 - White zinc Cr6 free
2	Side flange	C30 - White zinc Cr6 free
3	Self greasing grommet	Bronze/PTFE
4	Rotation pin	C45 8.8 grade

## HNG.50105.AZ HINGE WITH FRICTIONED ROTATION



Ref	Part description	Material - Finishing (AZ)
1	Central flange	C30 - White zinc Cr6 free
2	Side flange	C30 - White zinc Cr6 free
3	Self greasing grommet	Bronze/PTFE
4	Rotation pin	C45 8.8 grade

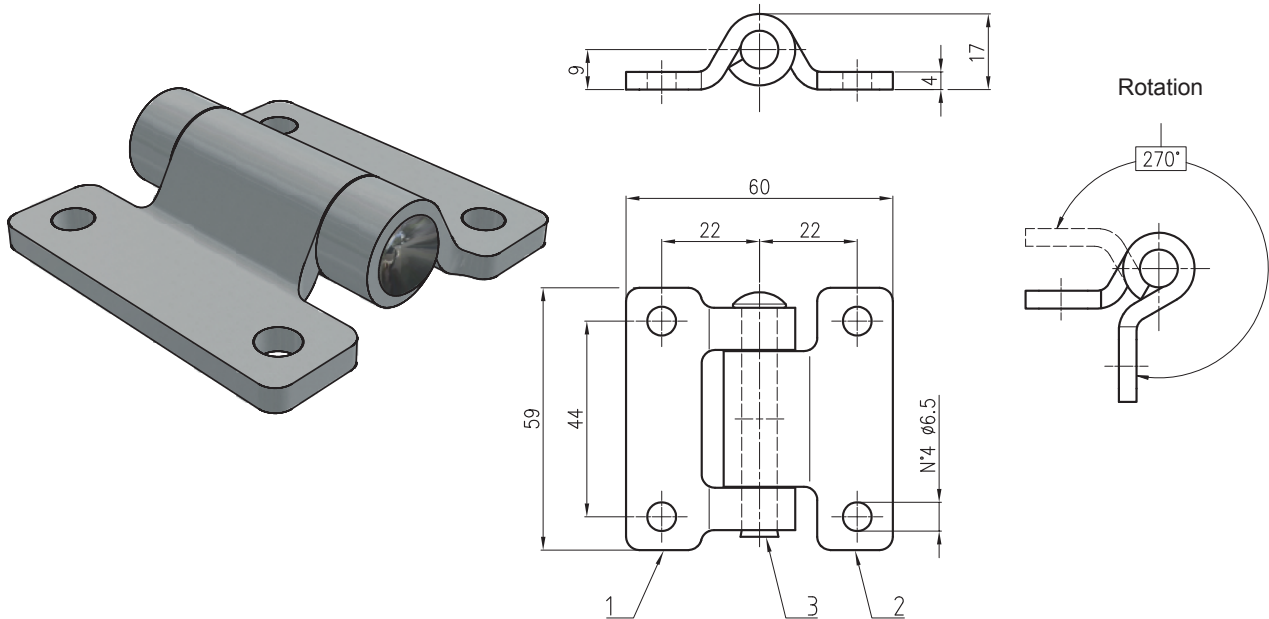
### HNG.7083.\*



Insert \* material "code" into hinge part number

Ref	Part description	Material - Finishing (BP)	Material - Finishing (NX)
1	Stud	AISI304 - Polished	AISI304 - Black enamel coated
2	Fix flange	AISI304 - Polished	AISI304 - Black enamel coated
3	Rotating flange	AISI304 - Polished	AISI304 - Black enamel coated

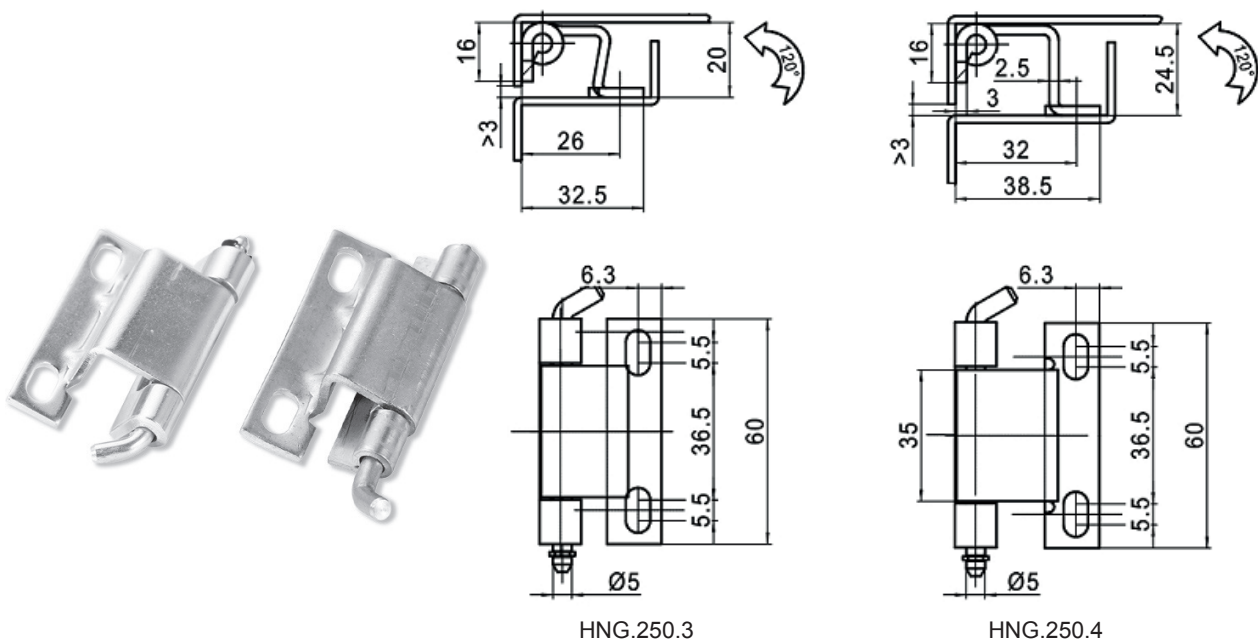
### HNG.6059.\*



Insert \* material "code" into hinge part number

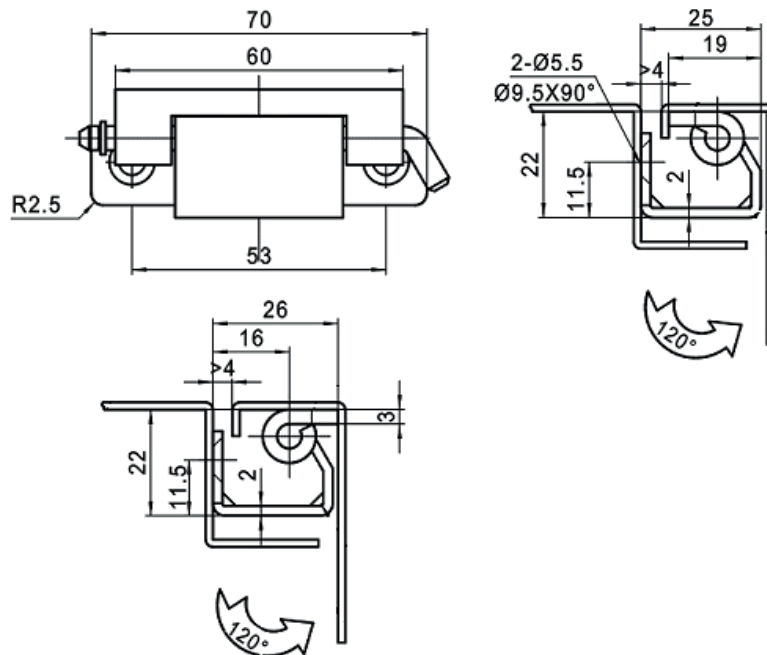
Ref	Part description	Material - Finishing (AZ)	Material - Finishing (BP)
1	Right flange	Fe360 - White zinc Cr6 free	AISI304 - Polished
2	Left flange	Fe360 - White zinc Cr6 free	AISI304 - Polished
3	Stud	AISI304	AISI304

### HNG.250.\*



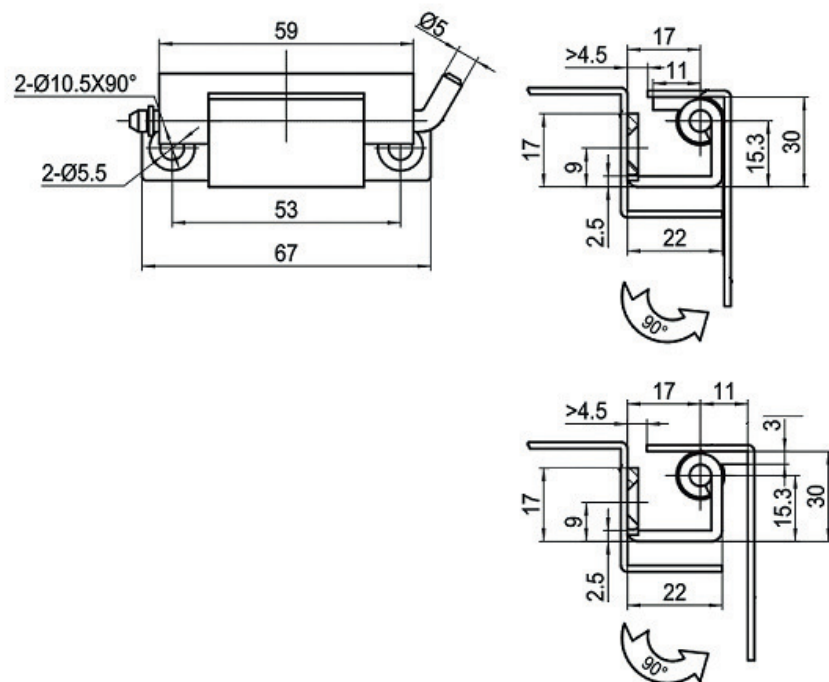
Hinge part number	Ref	Part description	Material - Finishing
HNG.250.3	1	Hinge	Steel - White zinc Cr6 free
HNG.250.4			

## HNG.275.1



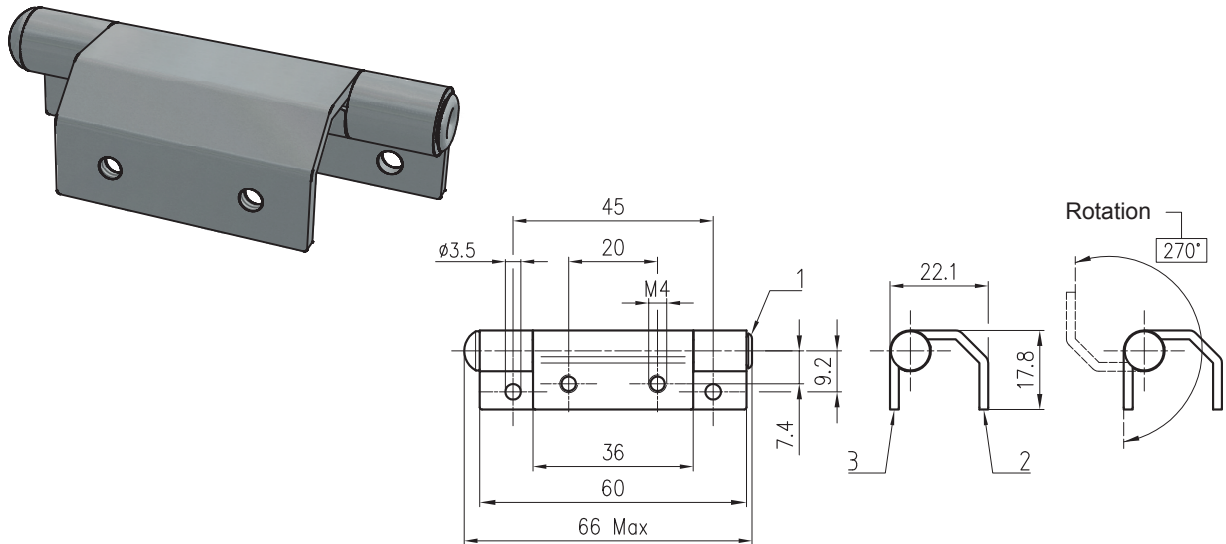
Ref	Part description	Material - Finishing
1	Hinge	Steel - White zinc Cr6 free

## HNG.275.2



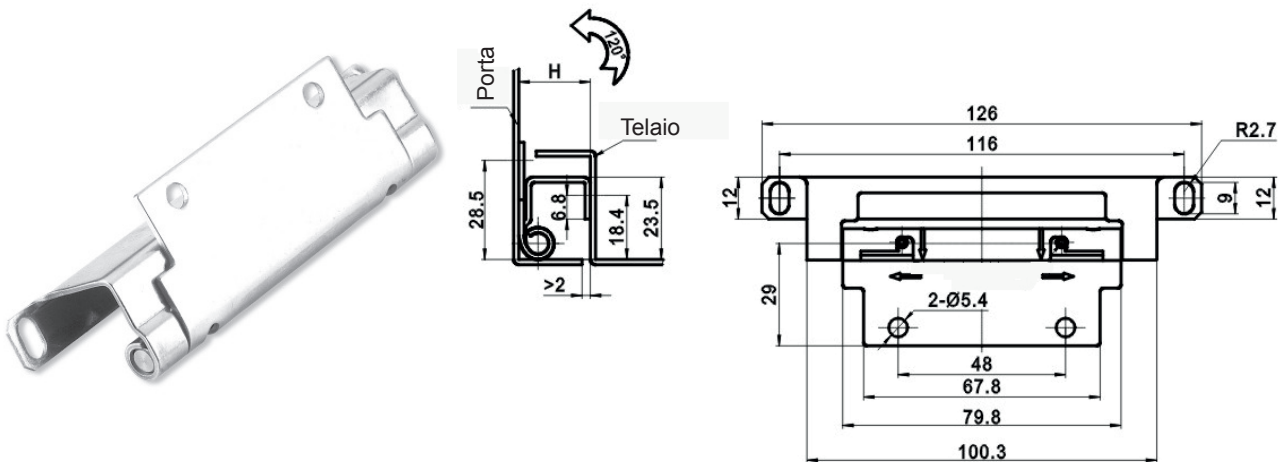
Ref	Part description	Material - Finishing
1	Hinge	Steel - White zinc Cr6 free

## HNG.7002.AZ



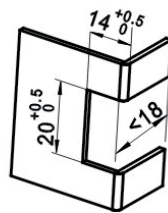
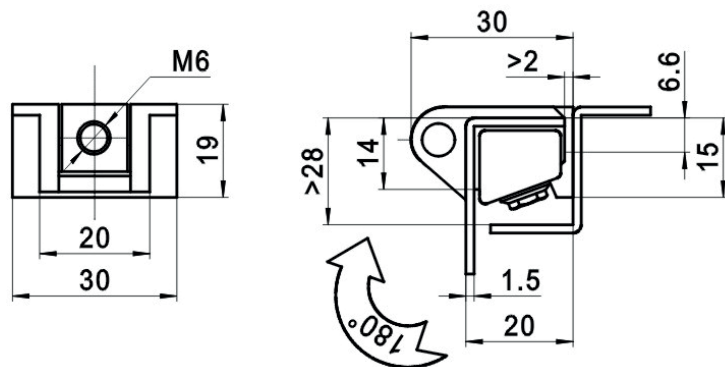
Ref	Part description	Material - Finishing
1	Stud	Steel 4.8 grade - White zinc Cr6 free
2	Rotating flange	DC03 - White zinc Cr6 free
3	Fix flange	DC03 - White zinc Cr6 free

## HNG.268.\*

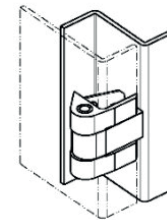


Hinge part number	H	Material - Finishing
HNG.268.1	23,9	Steel - White zinc Cr6 free
HNG.268.2	20,5	Steel - White zinc Cr6 free
HNG.268.3	17,5	Steel - White zinc Cr6 free
HNG.268.1A	23,9	Stainless steel (min. 500 pcs.)
HNG.268.2A	20,5	Stainless steel (min. 500 pcs.)
HNG.268.3A	17,5	Stainless steel (min. 500 pcs.)

## HNG.208



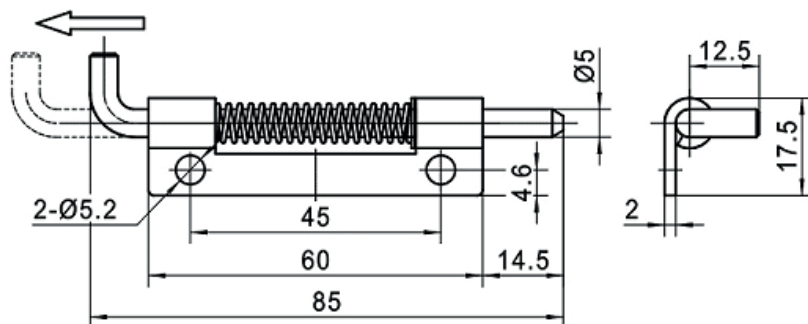
Door hole



Installation example

Ref	Part description	Material - Finishing
1	Hinge	Zinc alloy - Bright chrome

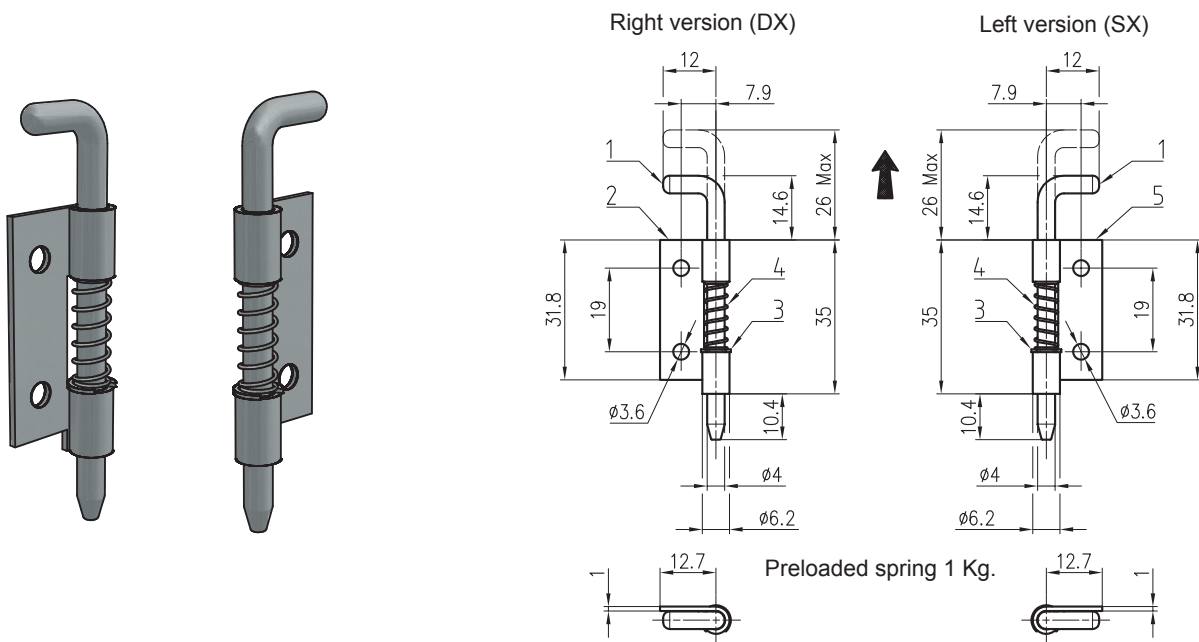
## HNG.225.3\*



Hinge part number	Rotation
HNG.225.3Y	Right
HNG.225.3Z	Left

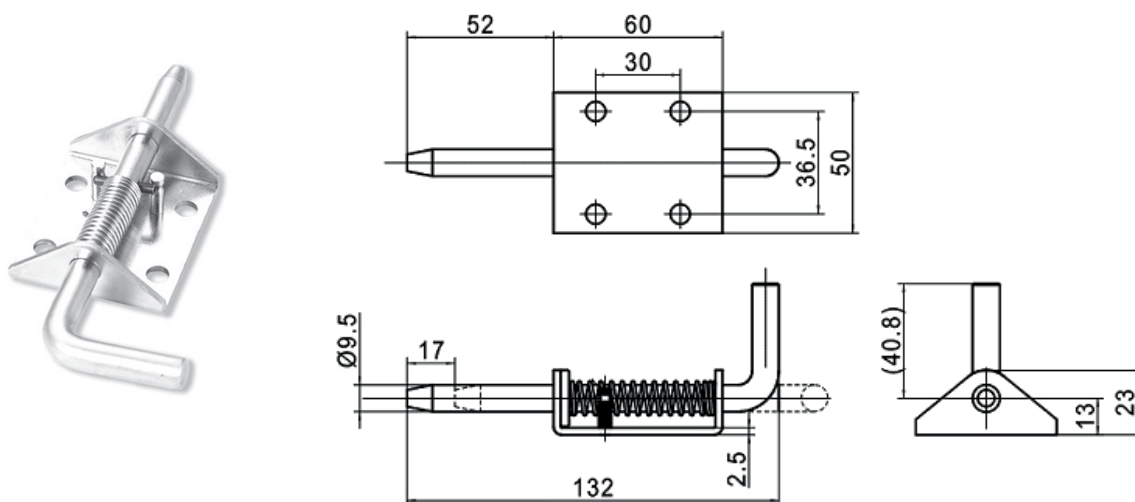
Ref	Part description	Material - Finishing
1	Hinge	Steel - White zinc Cr6 free

## HNG.11DX.AZ / HNG.11SX.AZ



Ref	Part description	Material - Finishing
1	Stud	C10 - White zinc Cr6 free
2	Flange DX/SX	DC03 - White zinc Cr6 free
3	Ring DIN6799	Standard
4	Spring	C72 - White zinc Cr6 free

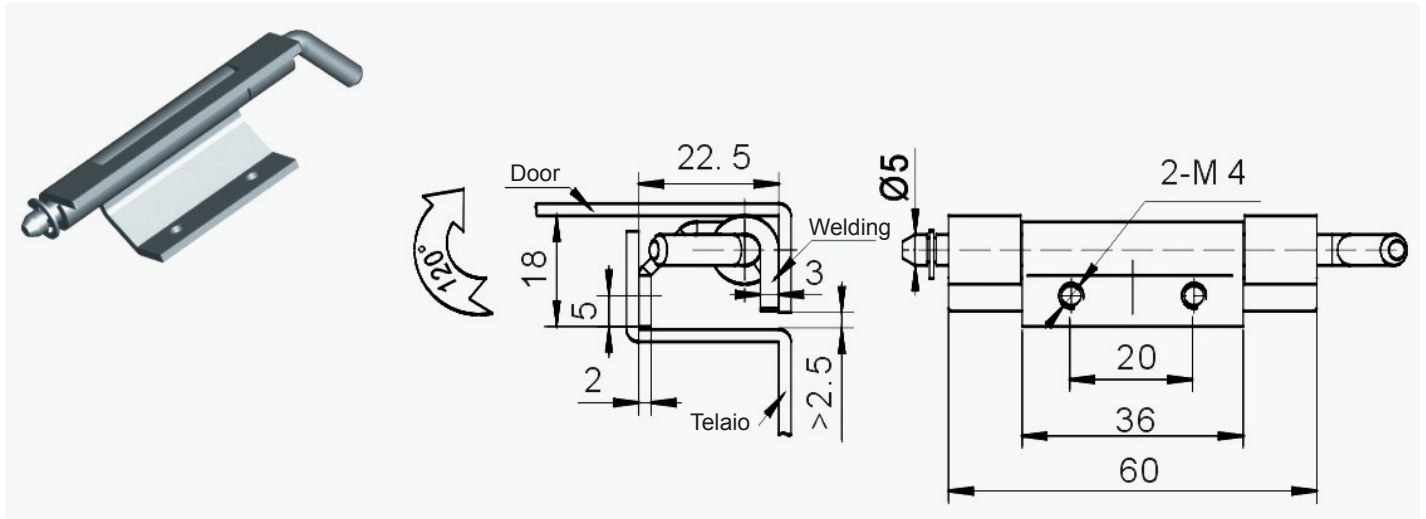
## HNG.263



Ref	Part description	Material - Finishing
1	Hinge	Steel - White zinc Cr6 free



## HNG.248



Ref	Part description	Material - Finishing
1	Hinge	Steel - White zinc Cr6 free

**NOTIZEN**

A series of horizontal dotted lines spanning the width of the page, providing a template for handwritten notes.



**EINPRESSBEFESTIGER**  
**SELF CLINCHING FASTENERS**



**BLINDNIETMUTTERN**  
**BLIND RIVET NUTS**

**SCHWEISSBOLZEN**  
**WELDING STUDS**



**BLINDNIETEN, SCHLIESS-  
RINGBOLZEN**  
**BLIND RIVETS, LOCK BOLTS**



**KÄFIGMUTTERN**  
**CAGE NUTS**

**EINSÄTZE UND  
GEWINDETRÄGER**  
**INSERTS AND  
THREADED PARTS**



**GEWINDEINSÄTZE FÜR  
METALLANWENDUNGEN**  
**THREAD INSERTS  
FOR METALS**



**LEICHTBAUBEFESTIGER**  
**LIGHTWEIGHT FASTENERS**



**VERSCHLUSSELEMENTE**  
**LOCKS**

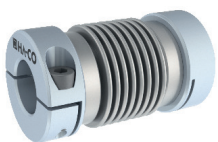
**ZENTRALSCHMIERANLAGEN,  
PUMPEN UND VERTEILER**  
**CENTRAL LUBRICATION SYSTEMS,  
PUMPS AND DISTRIBUTERS**



**DICHTSTOPFEN**  
**SEALING PLUGS**



**SCHNELLKUPPLUNGEN**  
**QUICK COUPLINGS**



**KUPPLUNGEN UND  
MASCHINENELEMENTE**  
**COUPLINGS AND MACHINE  
ELEMENTS**

**PSG LAUFROLLENFÜHRUNG**  
**PSG LINEARMOTION**



**ALUX-SCHIENENFÜHRUNG**  
**ALUX-GUIDE RAIL**



**TELESKOPSCHIENEN**  
**TELESCOPIC SLIDES**



**BAUGRUPPENMONTAGE,  
ENGINEERING**  
**MOUNTING THE ASSEMBLY,  
ENGINEERING**

**DREHTEILE,  
ZEICHNUNGSTEILE**  
**TURNING AND SPECIAL  
DRAWING PARTS**



