

Technical connection and more

HA-CO GmbH
Johann-Roithner-Str. 131
A-4050 Traun
Phone +43 7229 23844
info@ha-co.at
www.ha-co.at

Drehriegel- und Kompressionsverschlüsse



**Locks and
compression locks**





Haudenschild Holding AG

HA-CO GmbH Technische Lösungen

Johann-Roithner-Straße 131
A-4050 Traun
Tel: +43 7229 23844
info@ha-co.at
www.ha-co.at

HW-TEC GmbH Lineartechnik vom Spezialisten

Lidwil 10
CH-8852 Altendorf
Tel: +41 55 216 10 50
hw@hw-tec.ch
www.hw-tec.ch

Haudenschild AG Kompetenz in Antriebstechnik

Lidwil 10
CH-8852 Altendorf
Tel: +41 55 225 40 50
haud@haudenschild.com
www.haudenschild.com

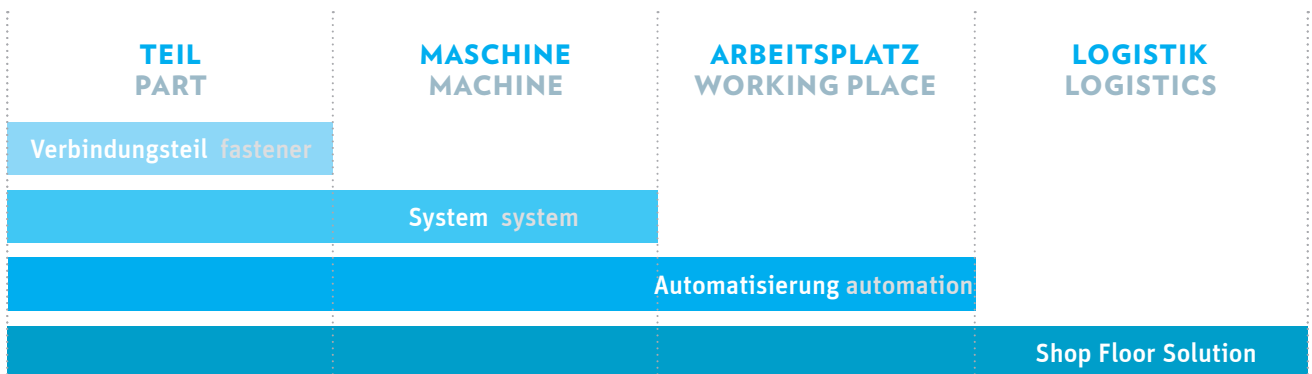
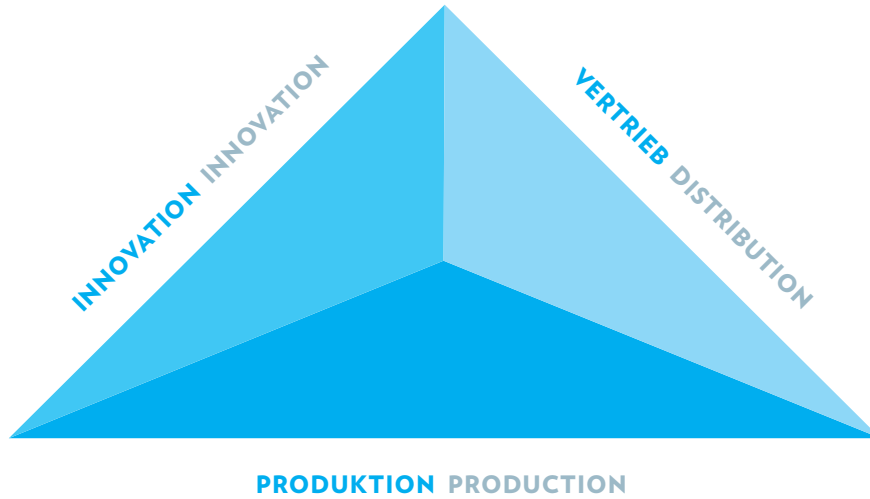
HA-CO GmbH Kupplungen und mehr

Daimlerring 10
D-63839 Kleinwallstadt
Tel: +49 602 265 58 10
info@ha-co.eu
www.ha-co.eu

Erfahrung die Ihnen zugute kommt
Zuverlässig und sicher
Nutzen Sie unsere Synergien zu Ihrem Vorteil
Experience for your benefit
Reliable and precise
Use our synergies for your advantage

Wir verbinden kreative Lösungen mit präziser technischer Umsetzung und bilden so die Schnittstelle zwischen Innovation, Produktion und Vertrieb.

We combine creative solutions with precise technical execution, so providing the interface between innovation, production and distribution.



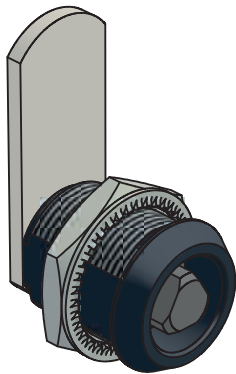
INNOVATIVE TECHNOLOGY

Automotive Automotive	Kunststofftechnik Plastics
Bahn, Truck, Trailer Train, Truck, Trailer	Luftfahrt Aerospace
Elektronik Electronics	Hydraulik Hydraulics
Medizintechnik Medical technology	Holzverarbeitung Wood processing
Blechbearbeitung Metal processing	Maschinenbau Mechanical engineering

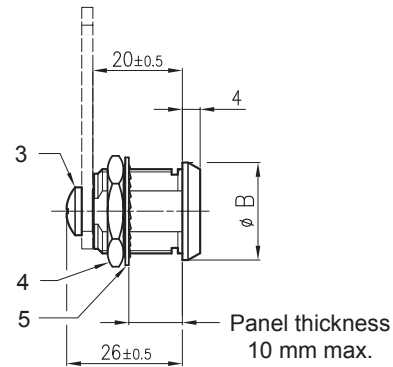
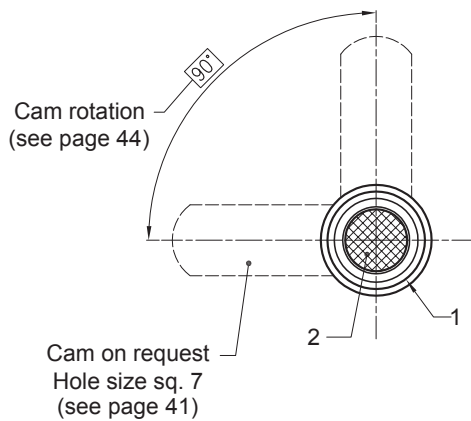
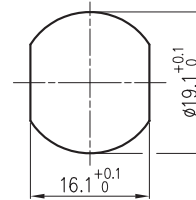
PRODUKTÜBERSICHT

1*520 / 1*920 - Lock, plastic	Seite 3
5*520 / 5*920 - Lock, zinc alloy	Seite 4
5*313 - Lock, zinc alloy	Seite 5
5*918 - Lock, zinc alloy, plastic, stainless steel	Seite 6
6*918 - Lock, zinc alloy, plastic	Seite 7
7*918 - Lock, plastic, 4 ways clip	Seite 8
8*918 - Lock, plastic, snap-in	Seite 9
9*920 - Lock, plastic, snap-in	Seite 10
5E5** - Lock with central wing, zinc alloy	Seite 11
5*516 - Lock, zinc alloy	Seite 11
5*1196 - Adjustable lock, zinc alloy	Seite 12
5*1197 - Adjustable lock, zinc alloy	Seite 13
5L3218 - Lock, stainless steel AISI316	Seite 14
5M918 - Spring loaded lock, stainless steel	Seite 15
5M932 - Spring loaded lock	Seite 16
5X820 - Latch lock	Seite 17
FH714 - Lock, zinc alloy/plastic, knob/central wing	Seite 18
FH705.3U - Lock, zinc alloy, T-Handle	Seite 19
FH705.3C - Lock, zinc alloy	Seite 19
JFH2031 - Lock	Seite 20
5N220 - Panel and drawer lock	Seite 21
5N016 - Key lock	Seite 22
5N116 - Key lock	Seite 22
5N7** - Key lock	Seite 23
FH815.2 - Key lock, central wing	Seite 24
FH705.3E - Key lock	Seite 24
C200B - Tubular key lock	Seite 25
C400B - Tubular key lock	Seite 25
C400.537 - Tubular key lock	Seite 26
ST.37*.1/351 - Tubular key electric switch	Seite 26
C400.*001 - Coded lock	Seite 27
301.H - Sliding door lock	Seite 28
301.HM - Sliding door lock	Seite 28
FH304 - Key lock, handle	Seite 29
FH305.1 - Key lock, T-Handle	Seite 29
FL91BR.7** - Compression lock - RH	Seite 30
FL91BR.7**L - Compression lock - LH	Seite 31
FL91BR.5** - Compression lock - RH	Seite 32
FL91BR.5**L - Compression lock - LH	Seite 33
FL91BR.7 / FL91BR.5 - Part number selection chart	Seite 34
FL91BR.85 - Compression lock - RH	Seite 35
FL91BR.85L - Compression lock - LH	Seite 36
FL91BR.361.*BK - Compression lock, mini version	Seite 37
FL91BR.85.T* - T-handle compression lock	Seite 38
FH859.1.*BK - Handle compression lock	Seite 39
Schlüssel	Seite 40
Riegel	Seite 41
Rotation/key out details	Seite 44

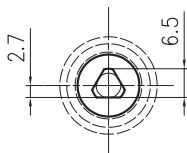
1*520 / 1*920 - LOCK, PLASTIC



Fixing hole size

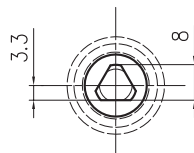


Triangle 6,5 mm



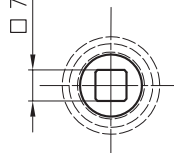
Code: A

Triangle 8 mm



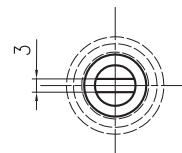
Code: B

Square 7 mm



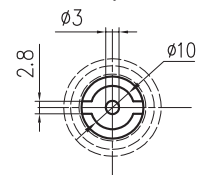
Code: C

Slotted recess



Code: D

P3 pin



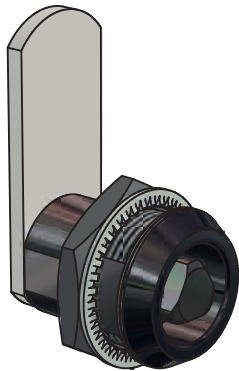
Code: P

Insert * head style "code" into lock part number.

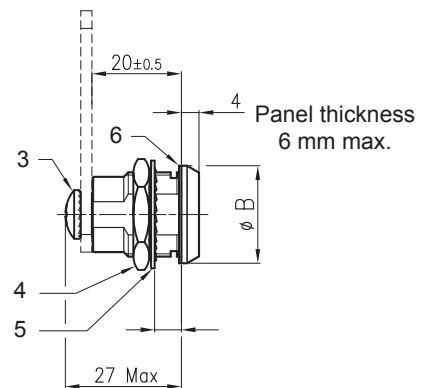
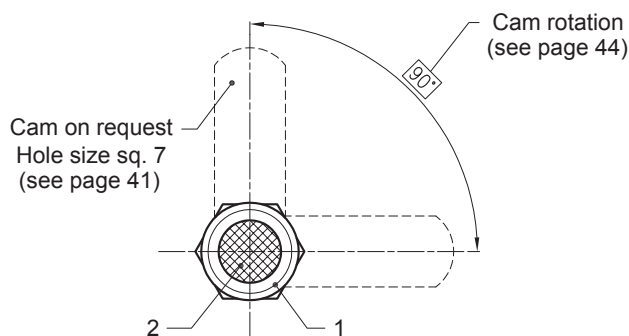
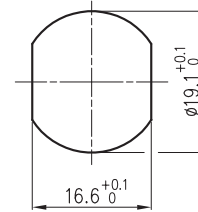
Lock Part Number (cam excluded)	Housing (Plastic) Dia. - Color	Cylinder (Plastic) Color
1*520PRTSA5TW	ø 22 - Black	Red
1*520PNTSA5TW	ø 22 - Black	Black
1*920PRTSA5TW	ø 28 - Black	Red
1*920PNTSA5TW	ø 28 - Black	Black

Ref	Part description	Material - Finishing
1	Housing	PA6.6 + 30% GF - see table
2	Cylinder	PA6.6 + 30% GF - see table
3	Self-tapping screw	Steel - White zinc Cr6 free
4	Nut BSW 3/4" - 24G	Steel - White zinc Cr6 free
5	Washer	Steel - White zinc Cr6 free

5*520 / 5*920 - LOCK, ZINC ALLOY



Fixing hole size



Triangle 6,5 mm

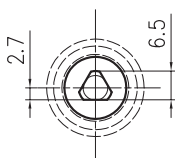
Triangle 8 mm

Square 7 mm

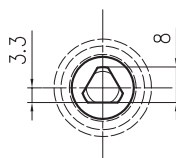
Slotted recess

Triangle 8 mm
low profile

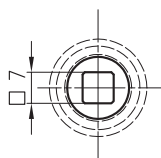
P3 pin



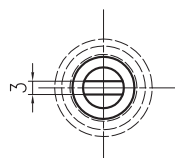
Code: A



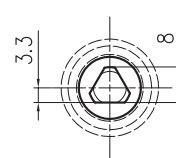
Code: B



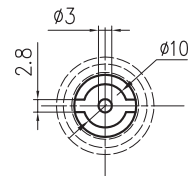
Code: C



Code: D



Code: J



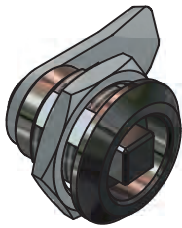
Code: P

Insert * head style "code" into lock part number.

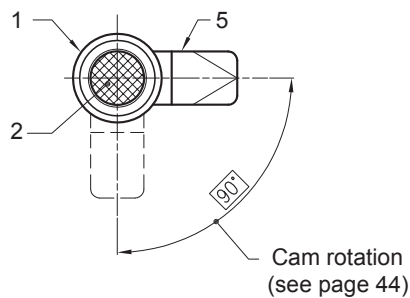
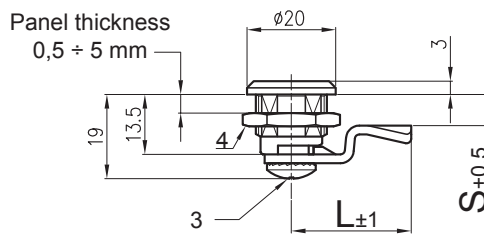
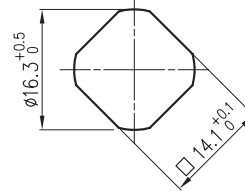
Lock Part Number (cam excluded)	Housing (Zinc alloy) Dia. - Color	Cylinder (Zinc alloy) Color
5*520NPTSA5TW	ø 22 - Nickel	Nickel
5*520BCTSA5TW	ø 22 - Chrome black	Bright chrome
5*920NPTSA5TW	ø 28 - Nickel	Nickel
5*920BCTSA5TW	ø 28 - Chrome black	Bright chrome

Ref	Part description	Material - Finishing
1	Housing	Zinc alloy - see table
2	Cylinder	Zinc alloy - see table
3	Screw M5	Steel - White zinc Cr6 free
4	Nut M19X1 - Ch. 22	Brass
5	Washer	Steel - White zinc Cr6 free
6	Protection washer	Nylon

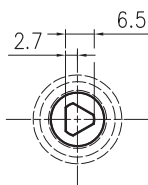
5*313 - LOCK, ZINC ALLOY



Fixing hole size

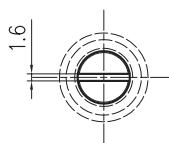


Triangle 6,5 mm



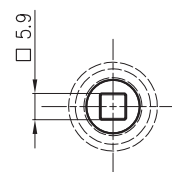
Code: A

Slotted recess



Code: D

Square 6 mm



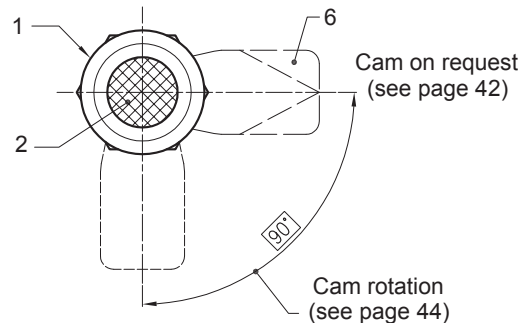
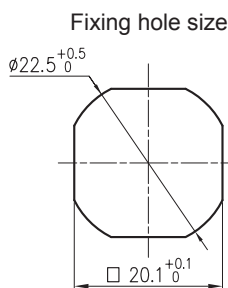
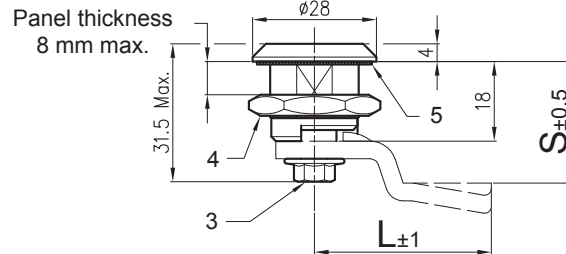
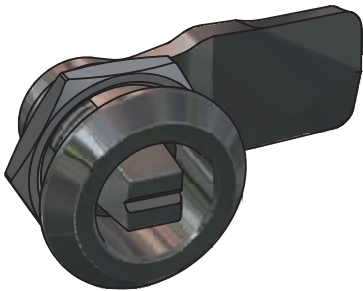
Code: F

Insert * head style "code" into lock part number.

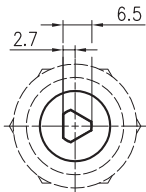
Lock Part Number	L ±1	S ±0,5
5*313CPNRA5T628	27	7
5*313CPNRA5T	24	13,5

Ref	Part description	Material - Finishing
1	Housing	Zinc alloy - Bright chrome
2	Cylinder	Zinc alloy - Bright chrome
3	Screw M5	Steel - White zinc Cr6 free
4	Nut M16X1	Steel - White zinc Cr6 free
5	Cam	FeP02 - White zinc Cr6 free

5*918 - LOCK, ZINC ALLOY, PLASTIC AND STAINLESS STEEL

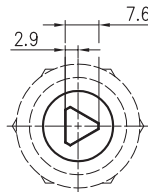


Triangle 6,5 mm



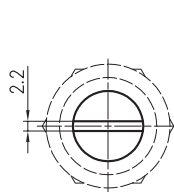
Code: A

Triangle 8 mm



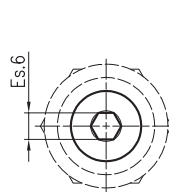
Code: B

Slotted recess



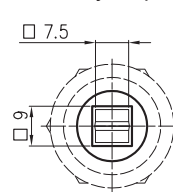
Code: D

Inside hex. 6 mm



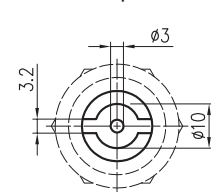
Code: G

Railways square



Code: M

P3 pin



Code: P

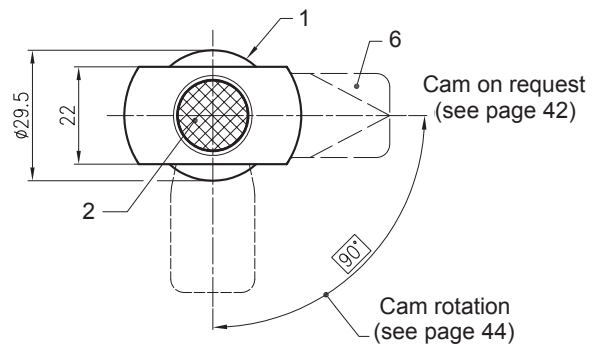
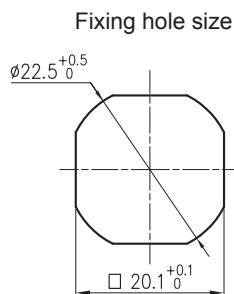
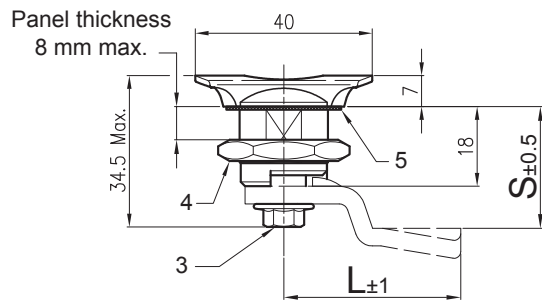
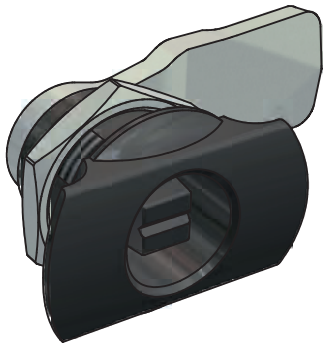
Insert * head style "code" and $\phi\phi$ material "code" into lock part number

Lock Part Number
5*918 $\phi\phi$ NRA5TW

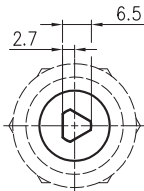
Material Code	Housing	Cylinder
BC	Epoxy black	Bright chrome
CP	Bright chrome	Bright chrome
BK	Epoxy black	Epoxy black

Ref	Part description	ZINC ALLOY (see table) Material - Finishing	INOX (SS) Material - Finishing	PLASTIC (PN) Material - Finishing
1	Housing	Zinc alloy - See table	AISI303 - polished	PA6.6 + 20%GF black
2	Cylinder	Zinc alloy - See table	AISI304 - polished	PA6.6 + 20%GF black
3	Screw M6X10	Steel - white zinc Cr6 free	AISI303	Steel - white zinc Cr6 free
4	Nut M22X1,5	Steel - white zinc Cr6 free	AISI303	PA6.6 + 30%GF black
5	Gasket	NBR	NBR	NBR
6	Cam	Steel - white zinc Cr6 free	AISI3034- polished	Steel - white zinc Cr6 free

6*918 - LOCK, ZINC ALLOY, PLASTIC

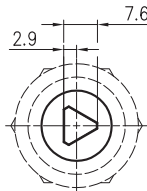


Triangle 6,5 mm



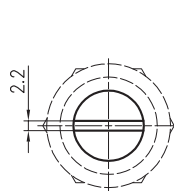
Code: A

Triangle 8 mm



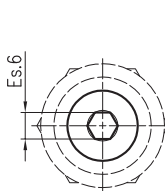
Code: B

Slotted recess



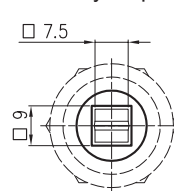
Code: D

Inside hex. 6 mm



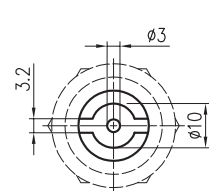
Code: G

Railways square



Code: M

P3 pin



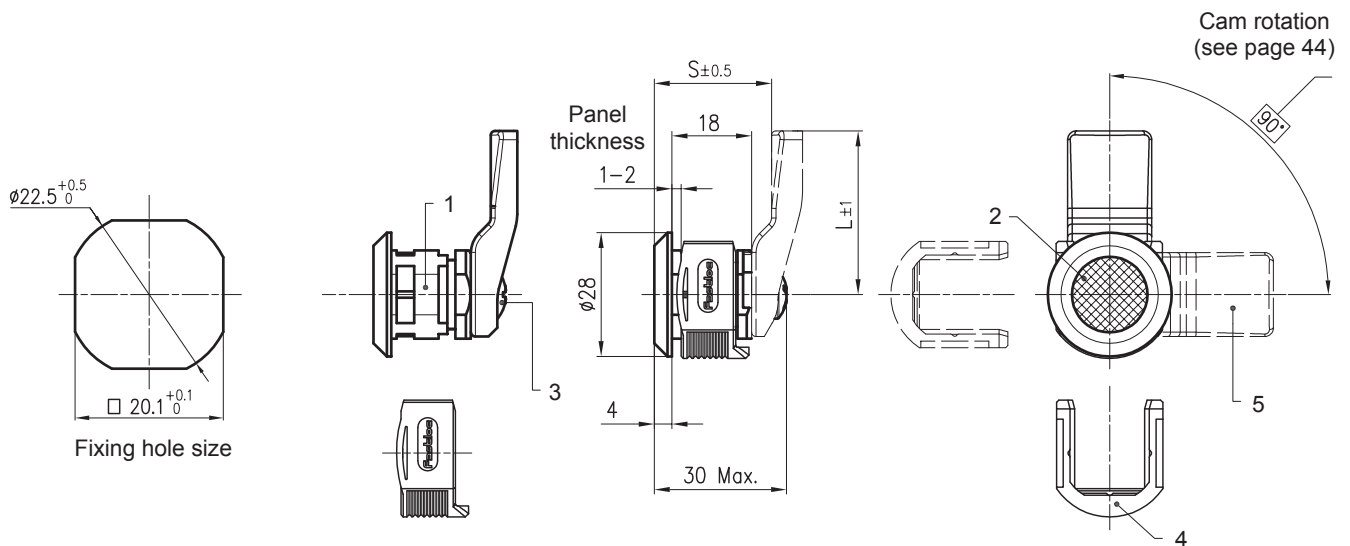
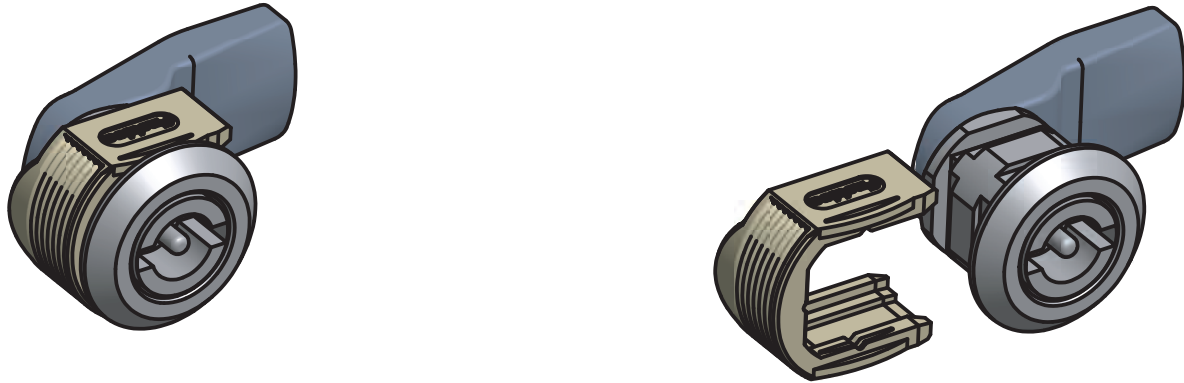
Code: P

Insert * head style "code" and $\phi\phi$ material "code" into lock part number

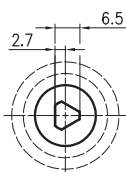
Lock Part Number
6*918 $\phi\phi$ NBW

Ref	Part description	PLASTIC/ZINC ALLOY (NB) Material - Finishing	PLASTIC (PN) Material - Finishing
1	Housing	PA6.6 + 20%GF Black	PA6.6 + 20%GF Black
2	Cylinder	Zinc alloy - Bright chrome	PA6.6 + 20%GF Black
3	Screw M6X10	Steel - white zinc Cr6 free	Steel - white zinc Cr6 free
4	Nut M22X1,5	Steel - white zinc Cr6 free	Steel - white zinc Cr6 free
5	Gasket	NBR	NBR
6	Cam	Steel - white zinc Cr6 free	Steel - white zinc Cr6 free

7*918 - LOCK, PLASTIC, 4 WAYS CLIP

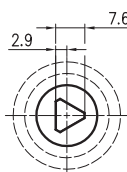


Triangle 6,5 mm



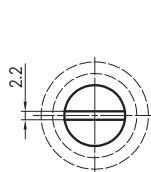
Code: A

Triangle 8 mm



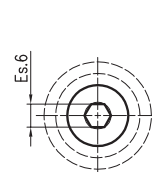
Code: B

Slotted recess



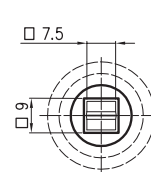
Code: D

Inside hex. 6 mm



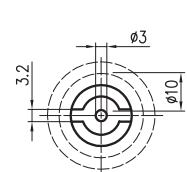
Code: G

Railways square



Code: M

P3 pin



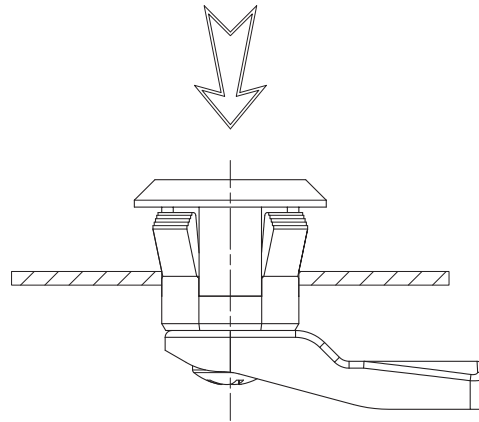
Code: P

Insert * head style "code" into lock part number

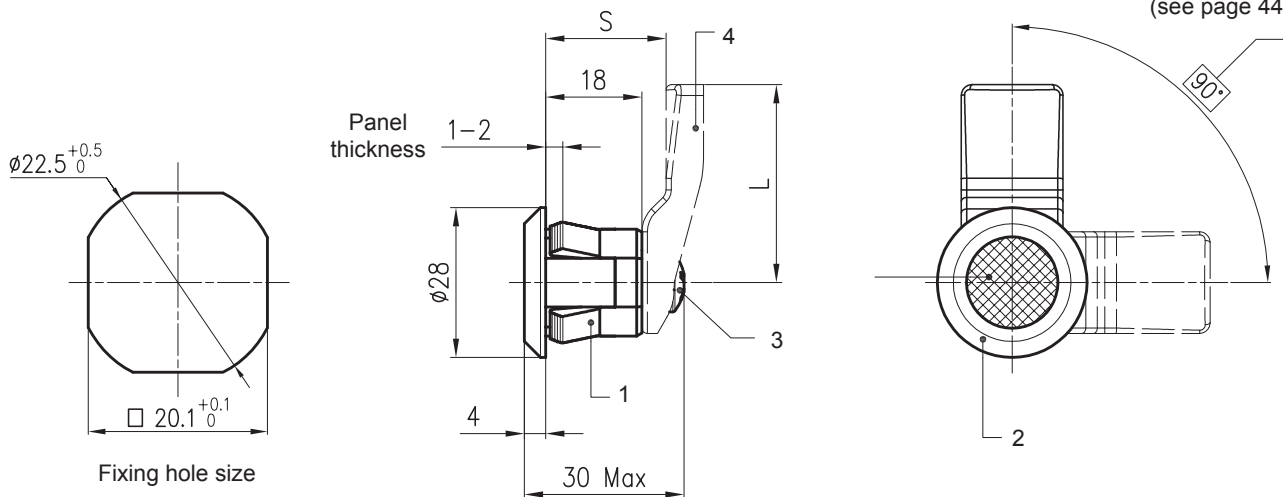
Lock Part Number
7*918PNNBW

Ref	Part description	PLASTIC Material - Finishing
1	Housing	PA6.6 + 30%GF Black
2	Cylinder	PA6.6 + 30%GF Black
3	Screw M6X10	Steel - White zinc Cr6 free
4	Clip	PA6.6 + 30%GF Black
5	Cam	PA6.6 + 30%GF Black

8*918 - LOCK, PLASTIC, SNAP-IN



Cam rotation
(see page 44)



Triangle 6,5 mm

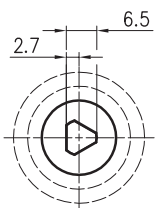
Triangle 8 mm

Slotted recess

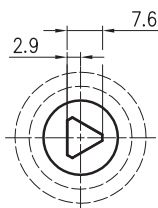
Inside hex. 6 mm

Railways square

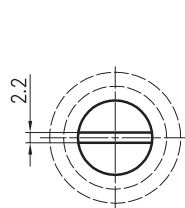
P3 pin



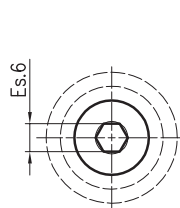
Code: A



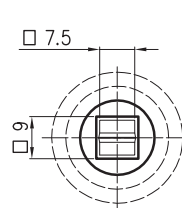
Code: B



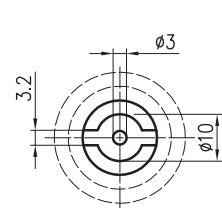
Code: D



Code: G



Code: M



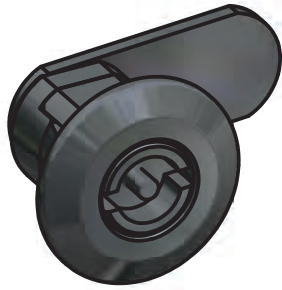
Code: P

Insert * head style "code" into lock part number

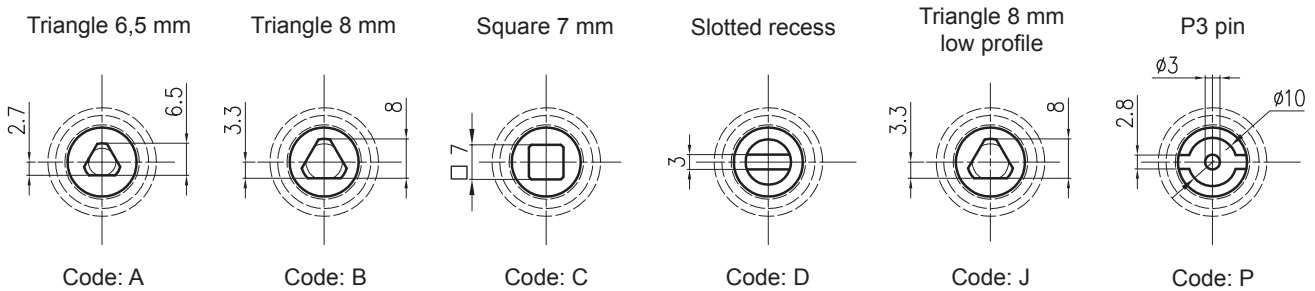
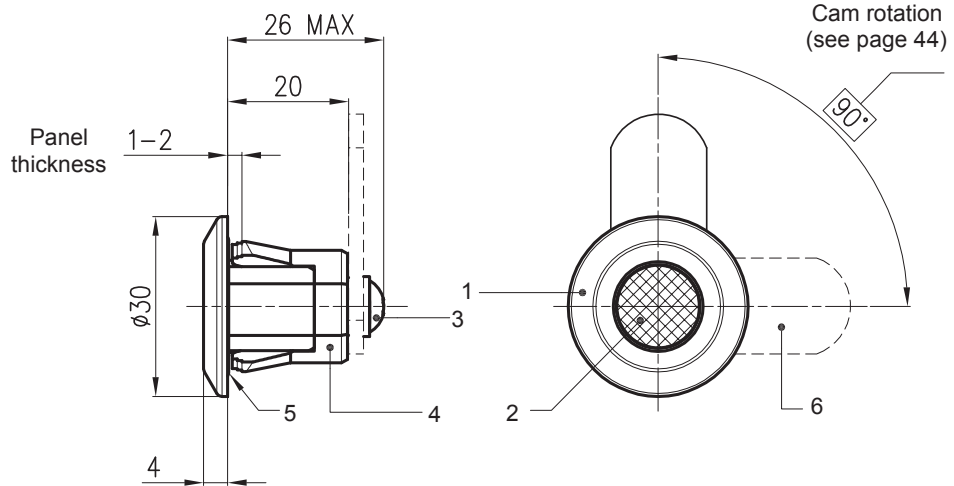
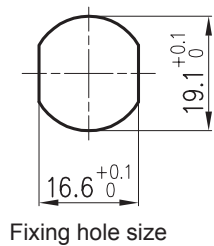
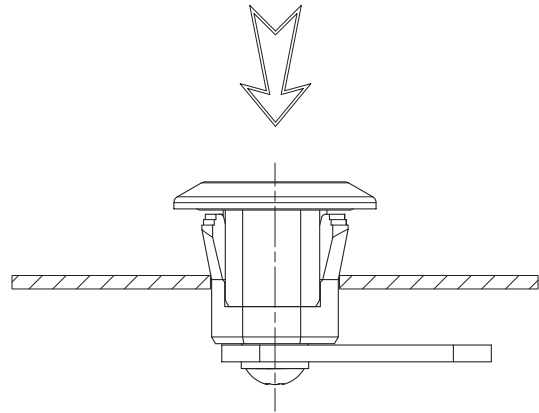
Lock Part Number
8*918PNNBW

Ref	Part description	PLASTIC Material - Finishing
1	Housing	PA6.6 + 30%GF Black
2	Cylinder	PA6.6 + 30%GF Black
3	Screw M6X10	Steel - White zinc Cr6 free
4	Cam	PA6.6 + 30%GF Black

9*920 - LOCK, PLASTIC, SNAP-IN



Patent pending!

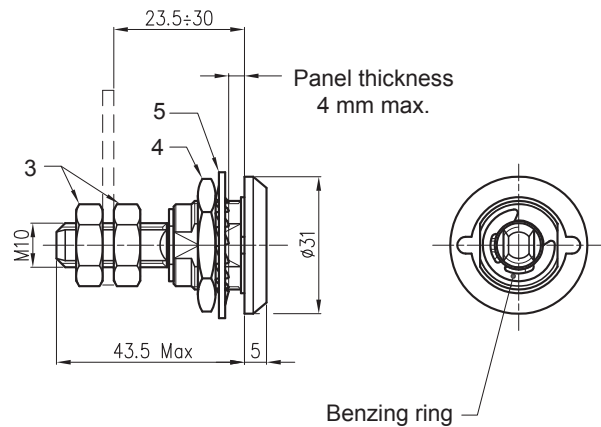
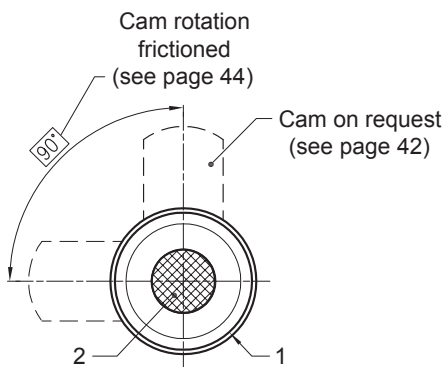
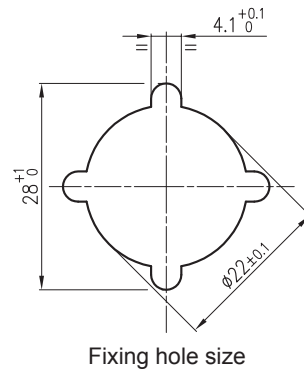
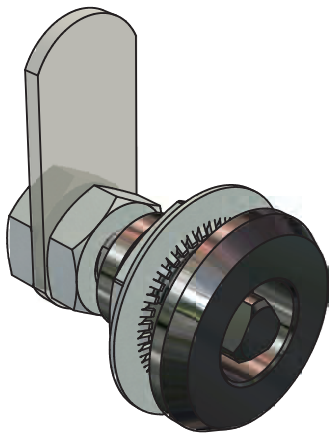


Insert * head style "code" and $\phi\phi$ material "code" into lock part number

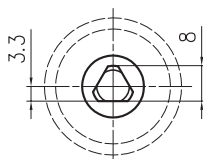
Lock Part Number
9*920 $\phi\phi$ NBW

Ref	Part description	PLASTIC/ZINC ALLOY (NB) Material - Finishing	PLASTIC (PN) Material - Finishing
1	Housing	PA6.6 + 30%GF Black	PA6.6 + 30%GF Black
2	Cylinder	Zinc alloy - Bright chrome	PA6.6 + 30%GF Black
3	Screw M5X10	Steel - White zinc Cr6 free	Steel - White zinc Cr6 free
4	Clip	PA6.6 + 30%GF Black	PA6.6 + 30%GF Black
5	Gasket	NBR	NBR
6	Cam	Steel - White zinc Cr6 free	Steel - White zinc Cr6 free

5*1196 - ADJUSTABLE LOCK, ZINC ALLOY

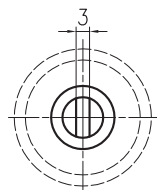


Triangle 8 mm



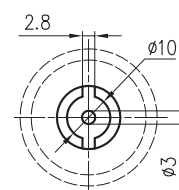
Code: B

Slotted recess



Code: D

P3 pin



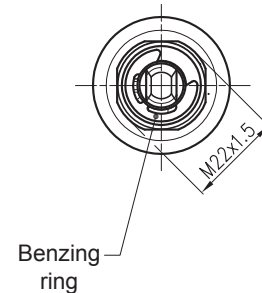
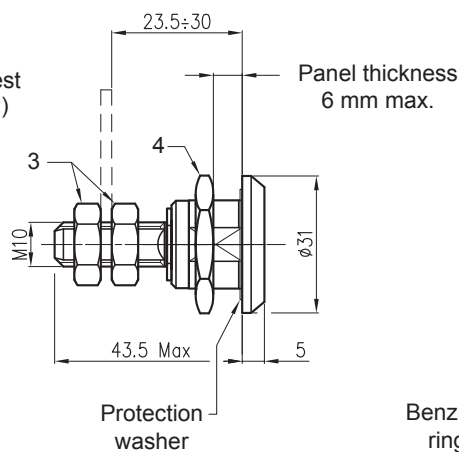
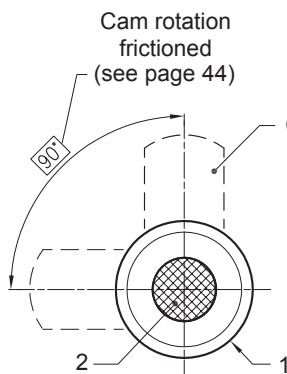
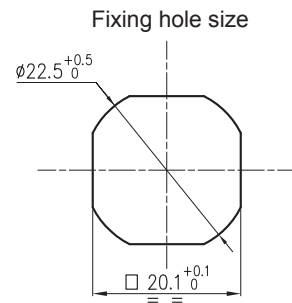
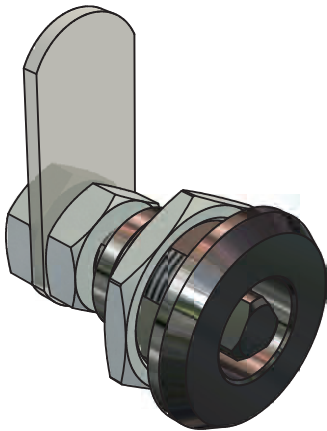
Code: P

Insert * head style "code" into lock part number.

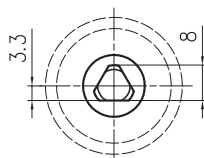
Lock Part Number (cam excluded)
5*1196CPWZJ5TW

Ref	Part description	Material - Finishing
1	Housing	Zinc alloy - Bright chrome
2	Cylinder	Zinc alloy - Bright chrome
3	Nut M10 low (2)	Steel - White zinc Cr6 free
4	Nut M20X1	Brass
5	Washer	Steel - White zinc Cr6 free

5*1197 - ADJUSTABLE LOCK, ZINC ALLOY

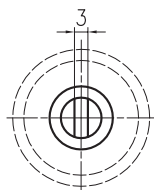


Triangle 8 mm



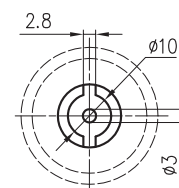
Code: B

Slotted recess



Code: D

P3 pin



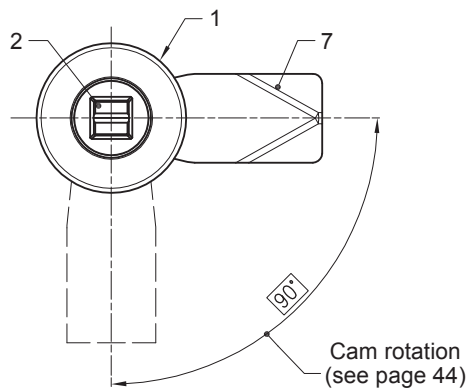
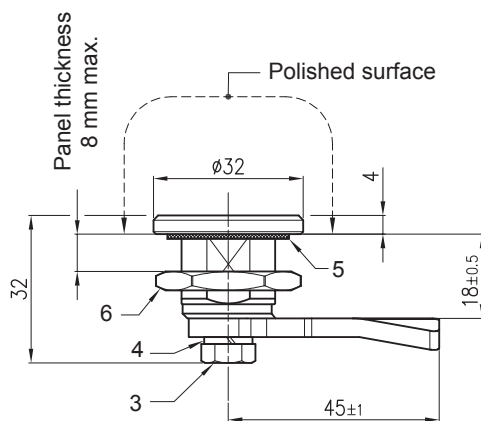
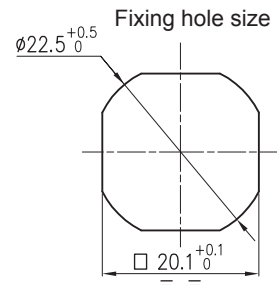
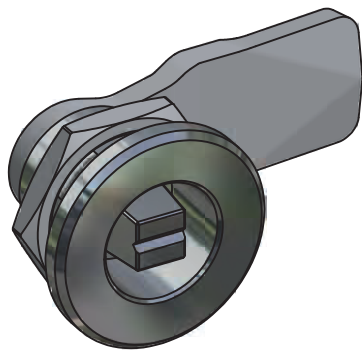
Code: P

Insert * head style "code" into lock part number.

Lock Part Number (cam excluded)
5*1197DZWZJ5TW

Ref	Part description	Material - Finishing
1	Housing	Zinc alloy - Bright chrome
2	Cylinder	Zinc alloy - Bright chrome
3	Nut M10 low (2)	Steel - White zinc Cr6 free
4	Nut M22X1,5 Ch. 27	Steel - White zinc Cr6 free

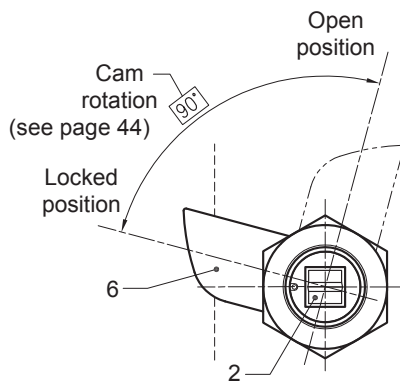
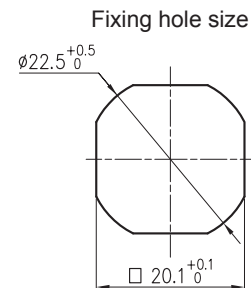
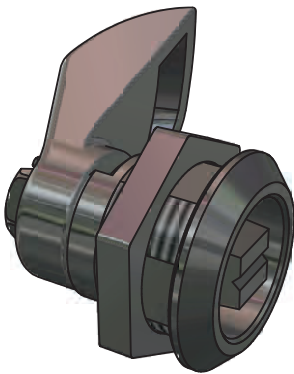
5L3218 - LOCK, STAINLESS STEEL AISI316



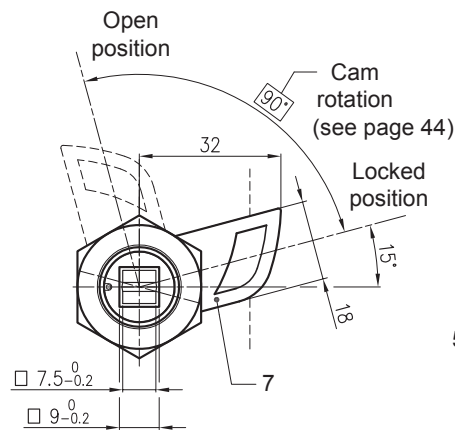
Lock Part Number
5L3218SSNRA5T

Ref	Part description	Material - Finishing
1	Housing	AISI316 - Polished
2	Cylinder	AISI316 - Polished
3	Screw	AISI304
4	Washer	AISI304
5	Gasket	NBR
6	Nut M22X1,5	AISI316
7	Cam	AISI316

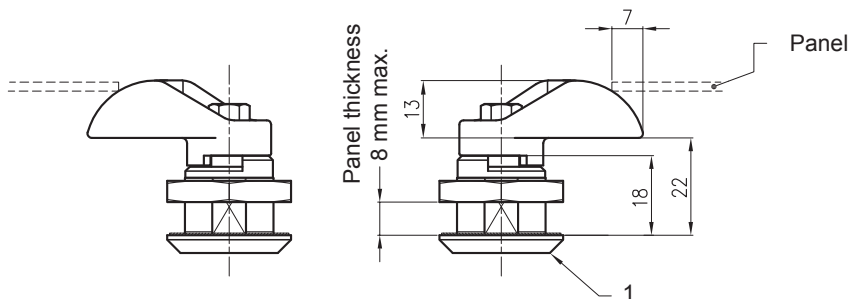
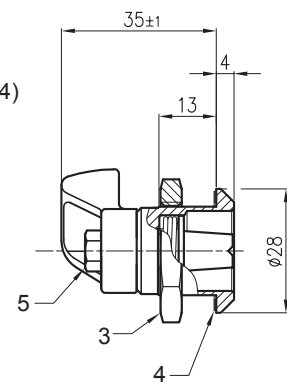
5M918 - SPRING LOADED LOCK, STAINLESS STEEL



RIGHT VERSION



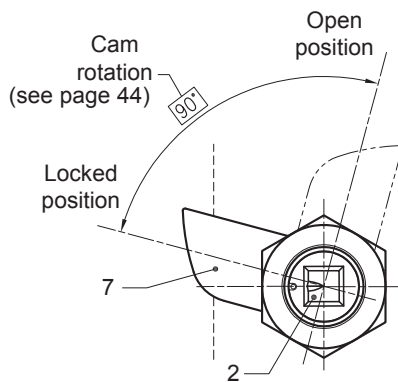
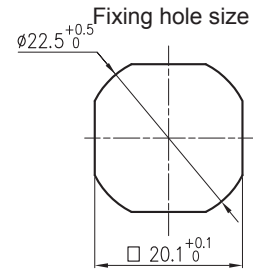
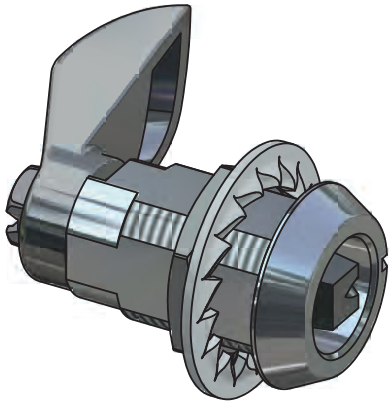
LEFT VERSION



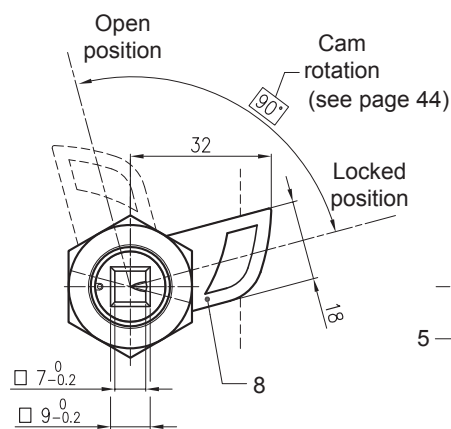
Lock Part Number	Version
5M918SSNRD5T999	Right
5M918SSNRK5T999	Left

Ref	Part description	Material - Finishing
1	Housing	AISI304 - polished
2	Cylinder railways square	AISI303 - polished
3	Nut M22X1,5	AISI303
4	Protective washer	NBR
5	Screw M6X10	AISI303
6	Cam RH (only right version)	AISI303 - polished
7	Cam LH (only left version)	AISI303 - polished

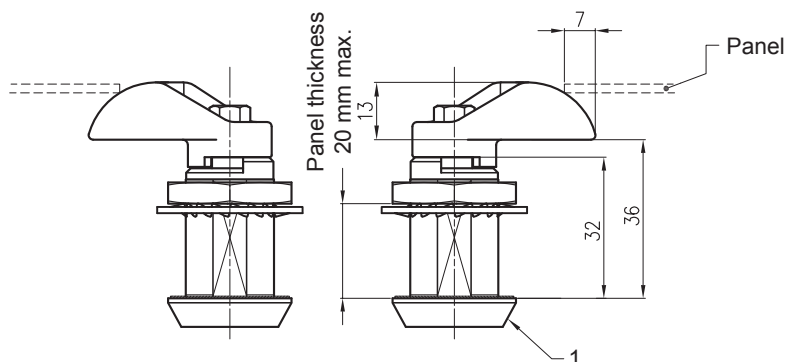
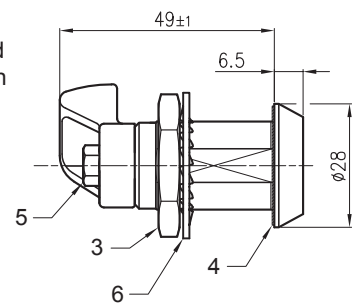
5M932 - SPRING LOADED LOCK



RIGHT VERSION



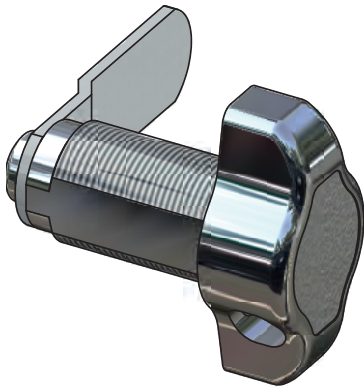
LEFT VERSION



Lock Part Number	Version
5M932NB.D	Right
5M932NB.K	Left

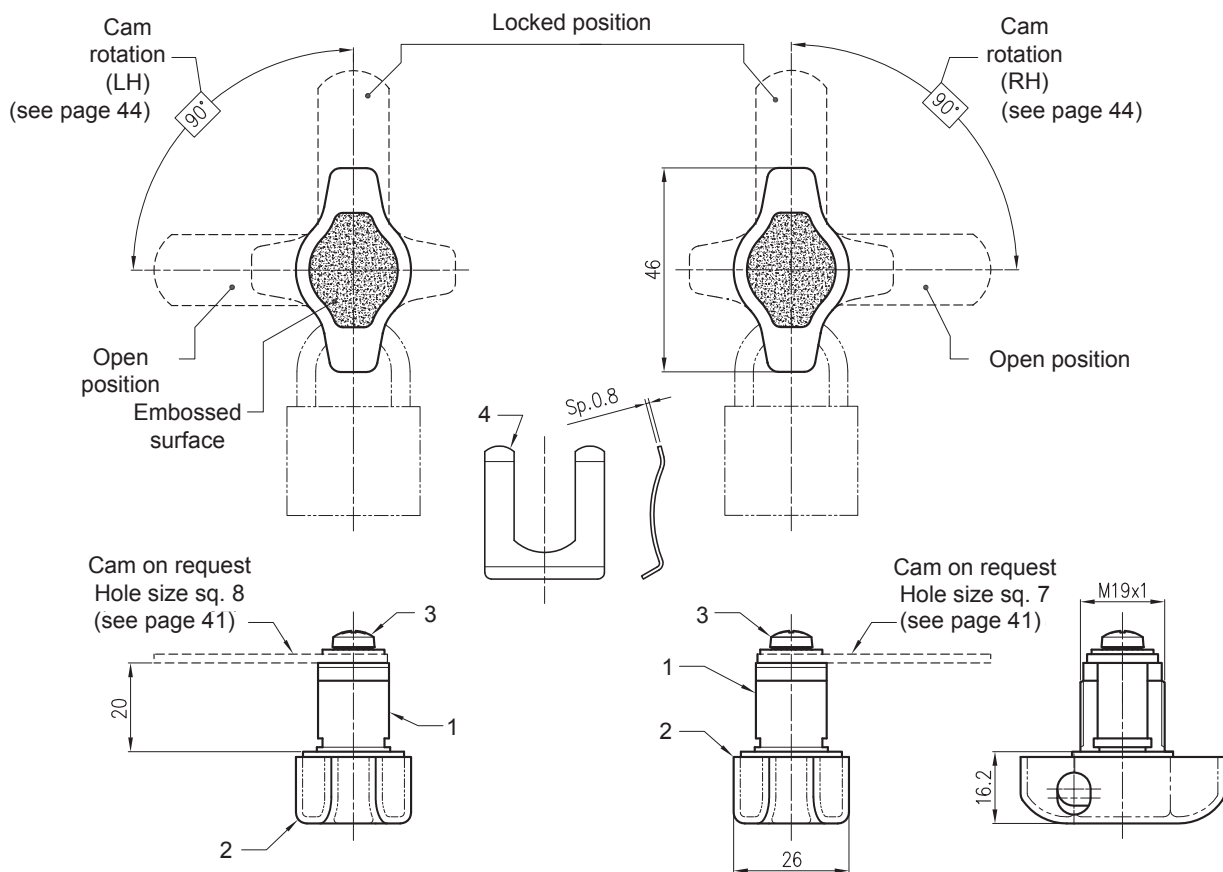
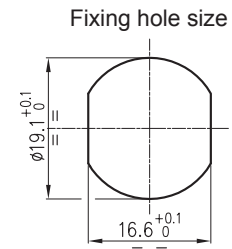
Ref	Part description	Material - Finishing
1	Housing	Zinc alloy - Nickel
2	Cylinder railways square	AISI303 - polished
3	Nut M22X1,5	AISI303
4	Protective washer	NBR
5	Screw M6X10	AISI303
6	Washer	Spring steel
7	Cam RH (only right version)	AISI303 - polished
8	Cam LH (only left version)	AISI303 - polished

5X820 - LATCH LOCK



Left version (LH)

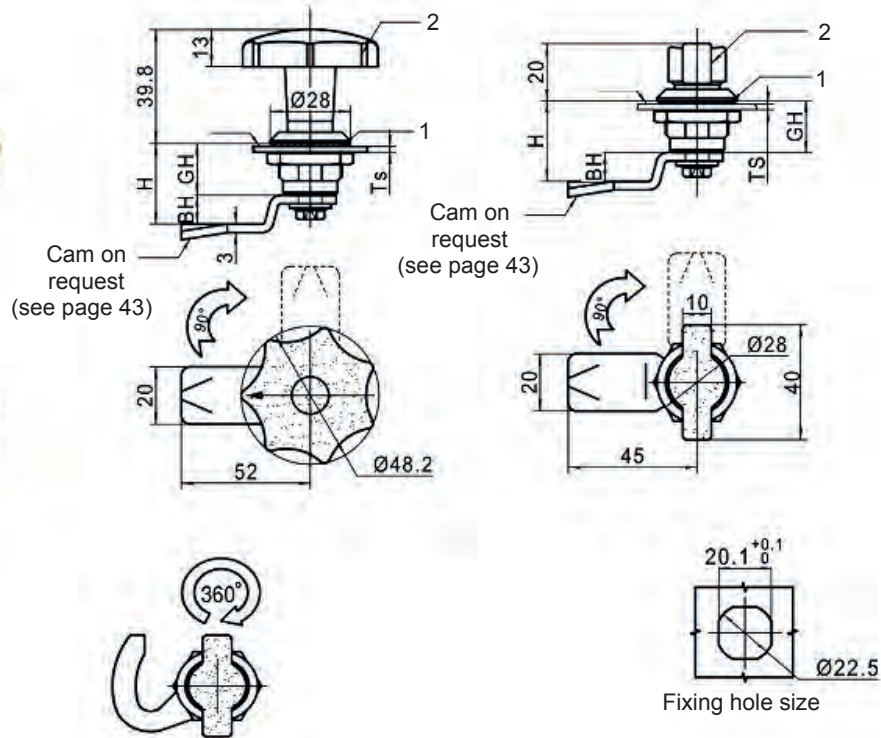
Right version (RH)



Lock Part Number	Version
5X820CPCRK5TW	Right
5X820CPCRD5TW	Left

Ref	Part description	Material - Finishing
1	Housing M19X1 (dx/sx)	Zinc alloy - Bright chrome
2	Handle	Zinc alloy - Bright chrome
3	Screw M5X10	Steel - White zinc Cr6 free
4	Horseshoe clip	Spring steel - White zinc Cr6 free

FH714 - LOCK, ZINC ALLOY/PLASTIC, KNOB/CENTRAL WING



Insert $\phi\phi$ material code into lock part number.

© Standard version - for other version minimum order quantity 1.000 pcs.

Lock Part Number Knob	GH	Ts max.
FH714.1.1 $\phi\phi$ ©	18	8
FH714.1.2 $\phi\phi$	28	22
FH714.1.3 $\phi\phi$	38	28
FH714.1.4 $\phi\phi$	62	52

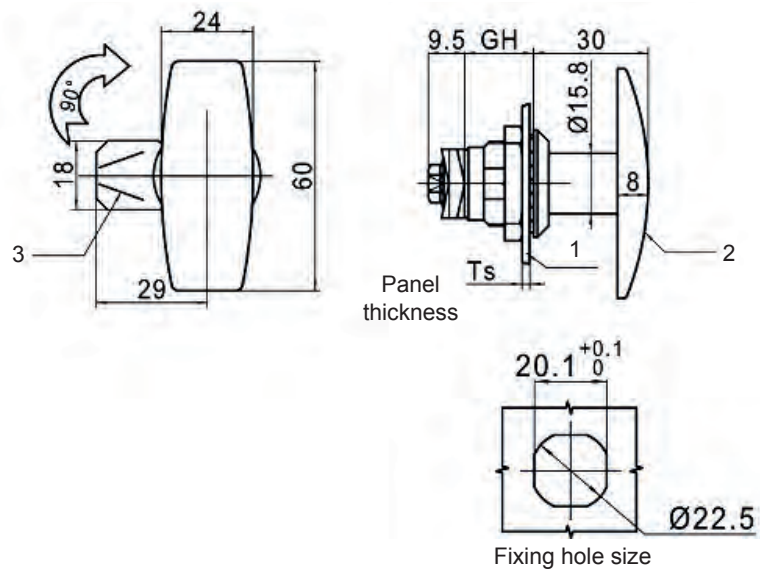
Ref	Part description	ZINC ALLOY/PLASTIC (BK) © Material - Finishing	PLASTIC/PLASTIC (PN) Material - Finishing
1	Housing	Zinc alloy - Black painted	Plastic, black
2	Knob	Plastic, black	Plastic, black
3	Cam	Steel - White zinc Cr6 free	Steel - White zinc Cr6 free

Insert $\phi\phi$ material code into lock part number.

Lock Part Number Central wing	GH	Ts max.
FH714.2.1 $\phi\phi$ ©	18	8
FH714.2.2 $\phi\phi$	28	22
FH714.2.3 $\phi\phi$	38	28
FH714.2.4 $\phi\phi$	62	52

Ref	Part description	ZINC ALLOY/PLASTIC (BK) © Material - Finishing	PLASTIC/PLASTIC (PN) Material - Finishing
1	Housing	Zinc alloy - Black painted	Plastic, black
2	Central wing	Plastic, black	Plastic, black
3	Cam	Steel - White zinc Cr6 free	Steel - White zinc Cr6 free

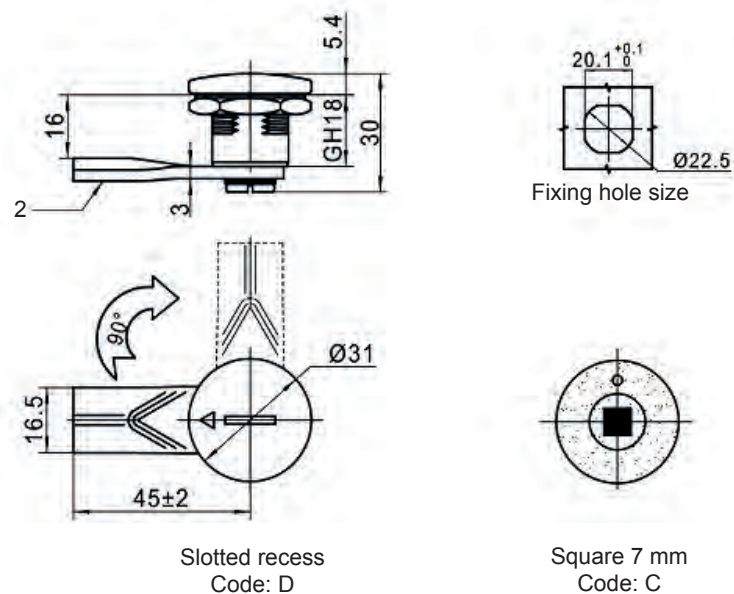
FH705.3U - LOCK, ZINC ALLOY, T-HANDLE



© Standard version - for other version minimum order quantity 1.000 pcs.

Lock Part Number	GH	Ts max.	Ref	Part description	Material - Finishing
FH705.3U.1BK ©	18	8	1	Housing	Zinc alloy - Black painted
FH705.3U.2BK	28	22	2	T-Handle	Zinc alloy - Black painted
FH705.3U.3BK	38	28	3	Cam	Steel - White zinc Cr6 free
FH705.3U.4BK	62	52			

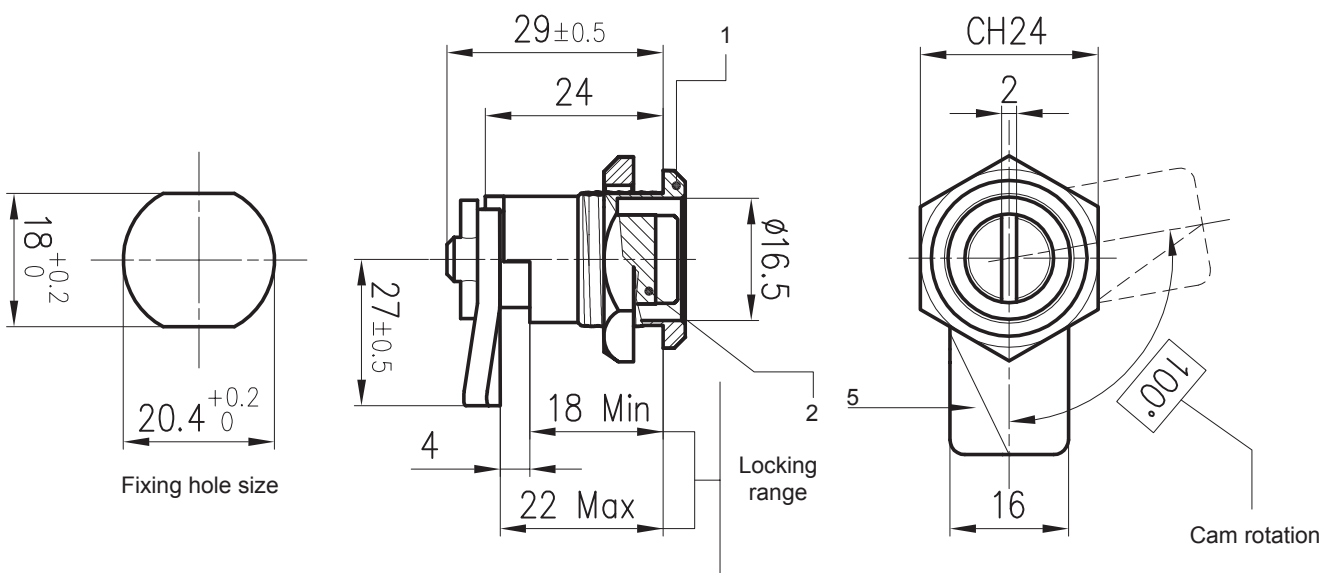
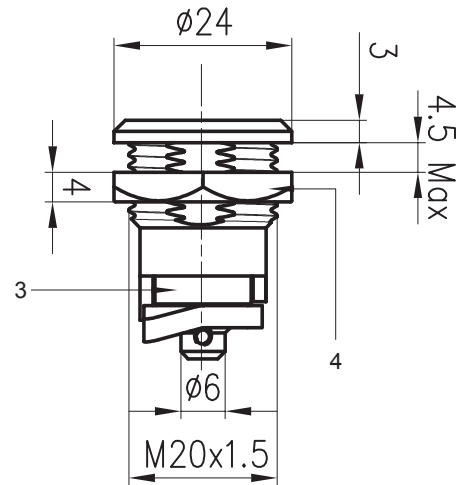
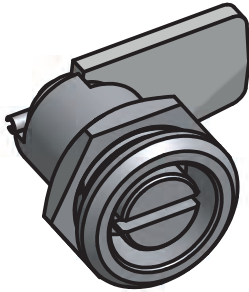
FH705.3C - LOCK, ZINC ALLOY



Insert * head style "code" into lock part number.

Lock Part Number	Ref	Part description	Material - Finishing
FH705.3C.*CP	1	Housing	Zinc alloy - Chrome plated
	2	Cam	Steel - White zinc Cr6 free

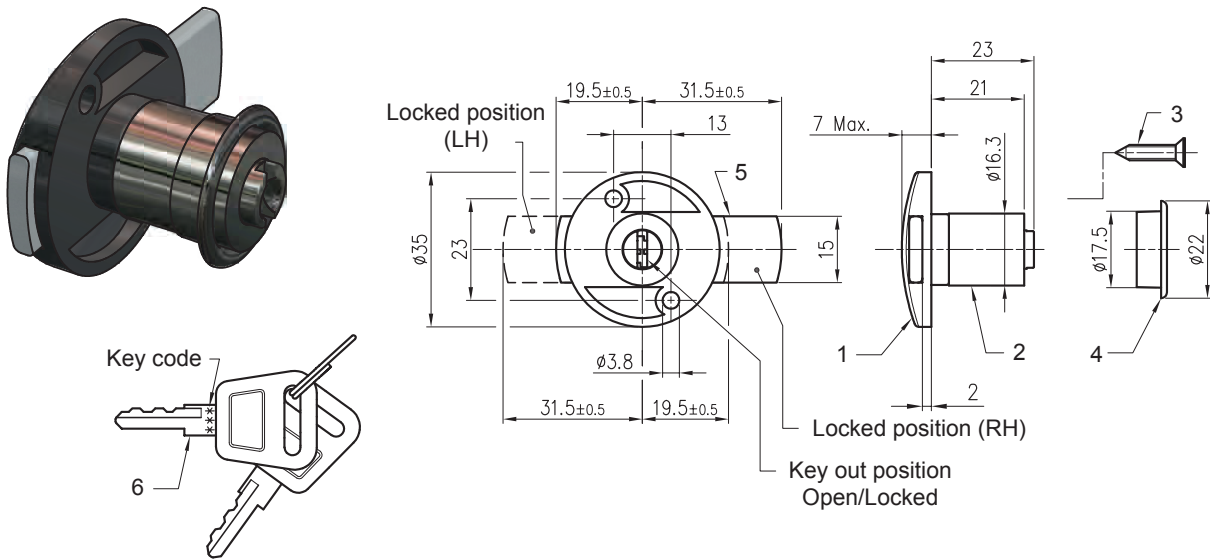
JFH2031 - LOCK



Lock Part Number
JFH2031

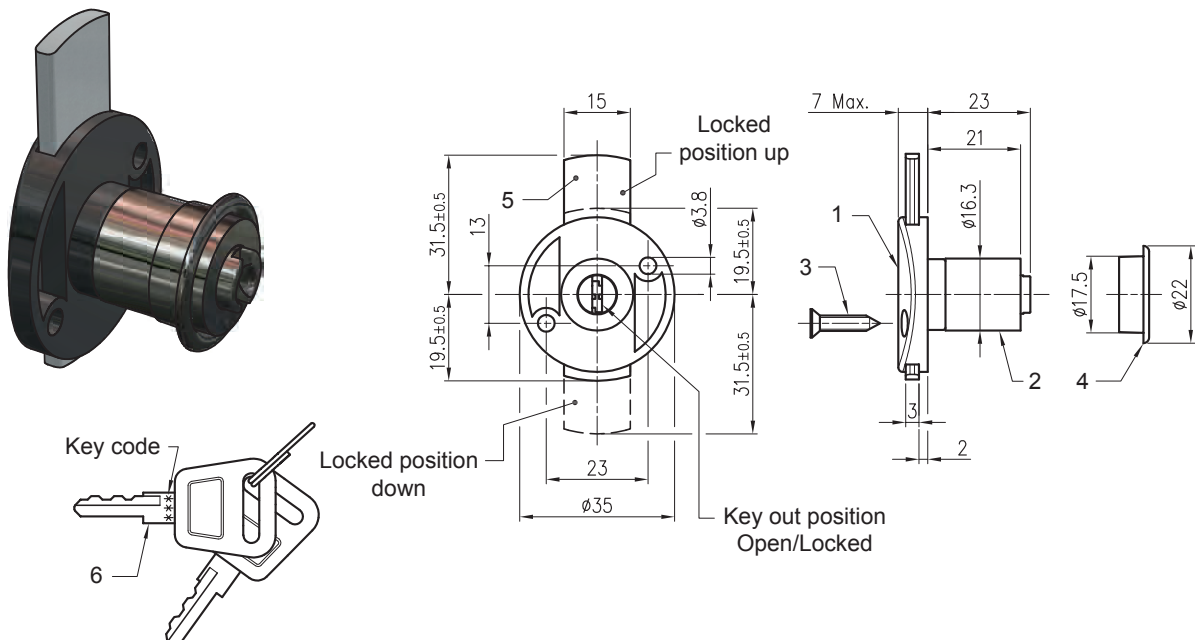
Ref	Part description	Material - Finishing
1	Housing	Zinc alloy - Bright chrome
2	Cylinder	Zinc alloy - Bright chrome
3	Spring cup	Zinc alloy - White zinc Cr6 free
4	Nut M20X1,5 Hex. 24	PA6.6 + 30%GF Black
5	Cam	Steel - White zinc Cr6 free

5N220 - PANEL AND DRAWER LOCK



Lock Part Number	Lock body color
5N220CPBSIHC	White
5N220CPMSIHC	Brown
5N220CPNSIHC	Black

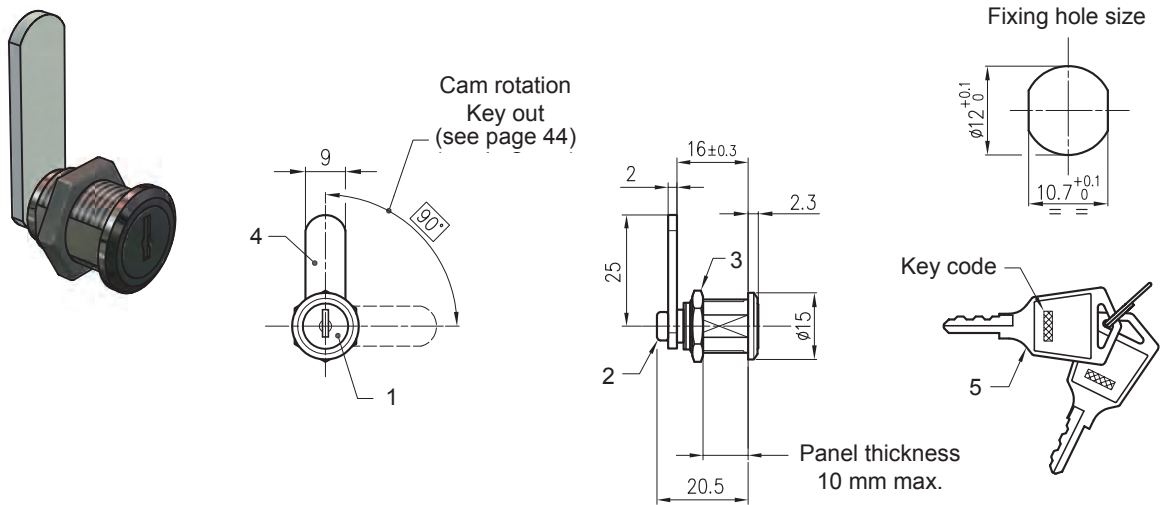
Ref	Part description	Material - Finishing
1	Housing	Zinc alloy - Bright chrome
2	Lock body	POM - See table
3	Self tapping screw 3,5x16	Steel - White zinc Cr6 free
4	Decorative ring	Steel - Broght chrome
5	Cam	Steel - White zinc Cr6 free
6	Key with ring (2)	Nickel, plastified



Lock Part Number	Lock body color
5N220CPBSIOC	White
5N220CPMSIOC	Brown
5N220CPNSIOC	Black

Ref	Part description	Material - Finishing
1	Housing	Zinc alloy - Bright chrome
2	Lock body	POM - See table
3	Self tapping screw 3,5x16	Steel - White zinc Cr6 free
4	Decorative ring	Steel - Broght chrome
5	Cam	Steel - White zinc Cr6 free
6	Key with ring (2)	Nickel, plastified

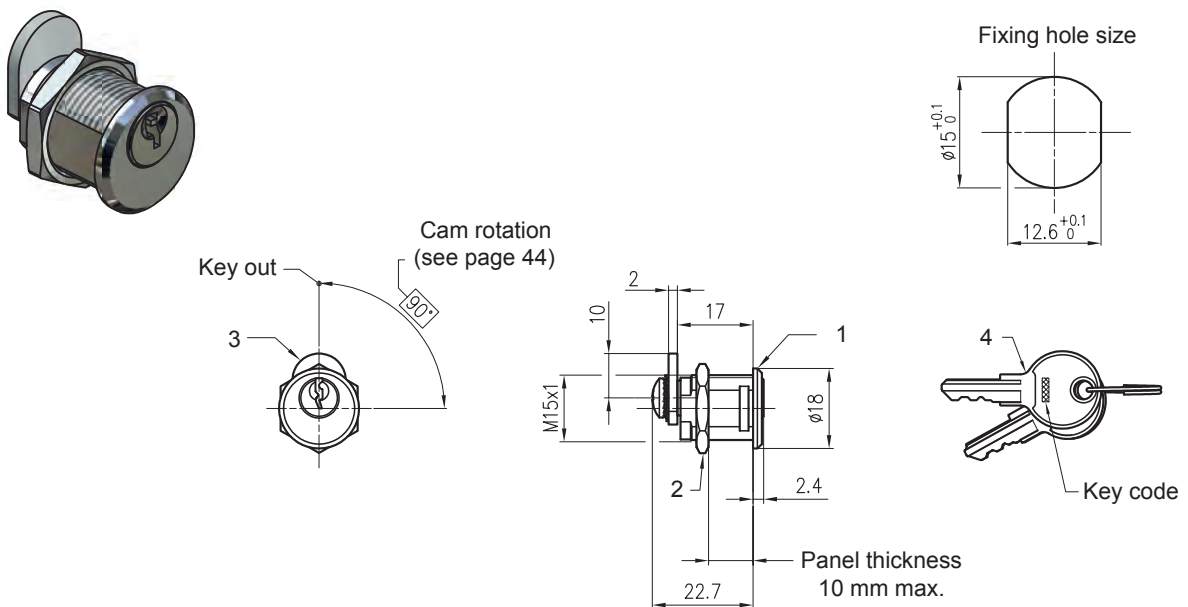
5N016 - KEY LOCK



Lock Part Number
5N016CPNRA0C

Ref	Part description	Material - Finishing
1	Body M12X1	Zinc alloy - Bright chrome
2	Screw M4X4	Steel - White zinc Cr6 free
3	Nut M12X1	Brass
4	Cam	FeP02 - White zinc Cr6 free
5	Key with stamped key code (2)	Nickel

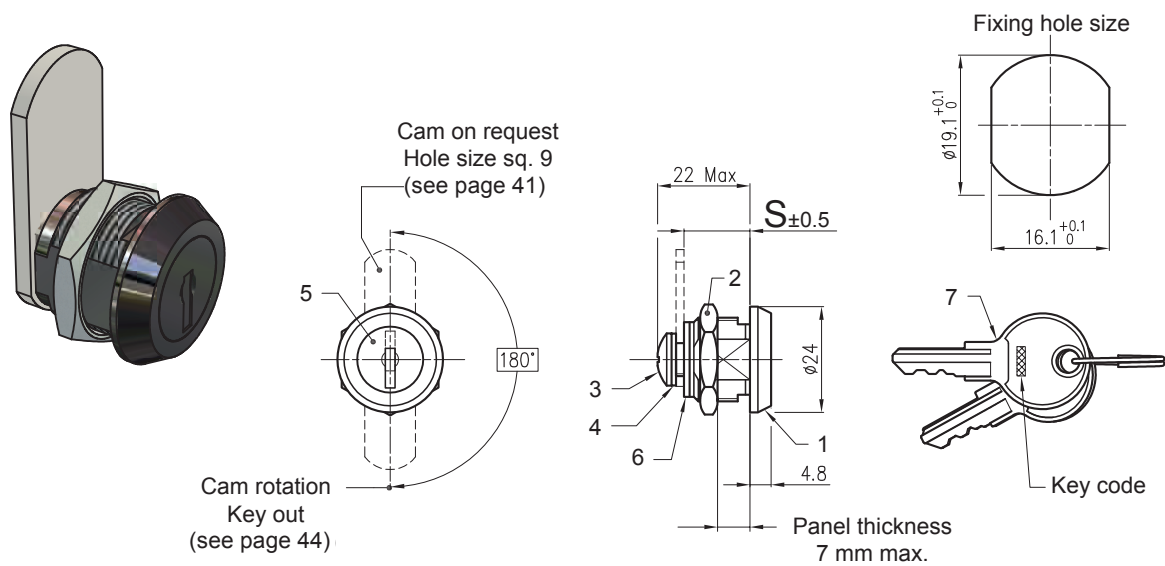
5N116 - KEY LOCK



Lock Part Number
5N116NPNRSOB

Ref	Part description	Material - Finishing
1	Body	Zinc alloy/Brass - Nickel
2	Nut	Brass - Nickel
3	Cam	FeP02 - White zinc Cr6 free
4	Key, 50 different key codes (2)	Brass - Nickel

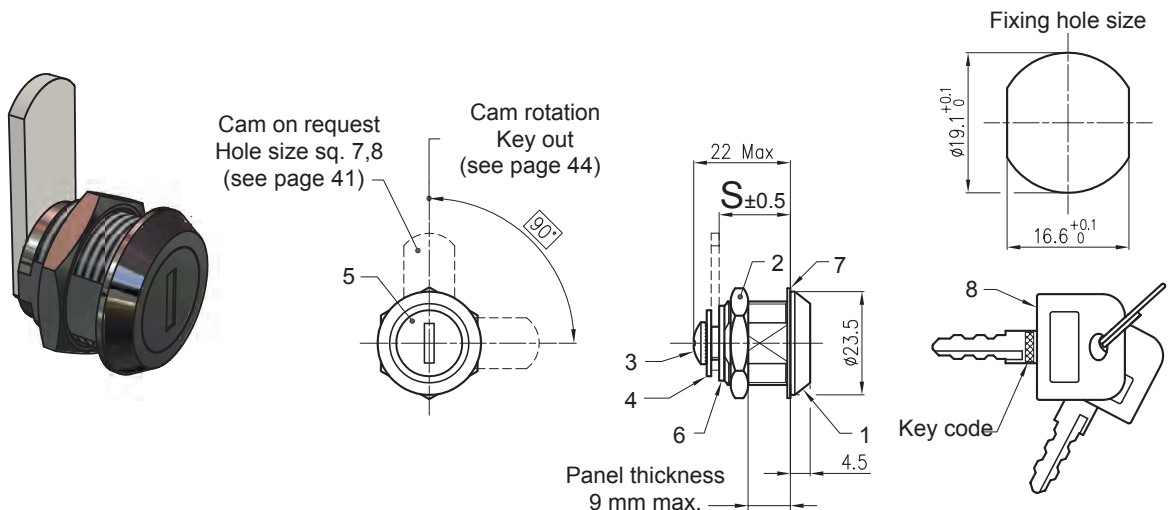
5N7** - KEY LOCK



Lock Part Number Keyed alike (KA) (cam excluded)	Lock Part Number Keyed differently (KD) (cam excluded)	S ±0,5
5N716CPNRHOAW	5N716CPNRHODW	16
5N720CPNRHOAW	5N720CPNRHODW	20
5N725CPNRHOAW	5N725CPNRHODW	25
5N730CPNRHOAW	5N730CPNRHODW	30
5N735CPNRHOAW	5N735CPNRHODW	35

Ref	Part description	Material - Finishing
1	Body	Zinc alloy - Bright chrome
2	Nut	Zinc alloy - White zinc Cr6 free
3	Screw	Steel - White zinc Cr6 free
4	Washer	Steel - White zinc Cr6 free
5	Cylinder	Zinc alloy - Chrome
6	Spring washer	Steel - White zinc Cr6 free
7	Key (2)	Nickel

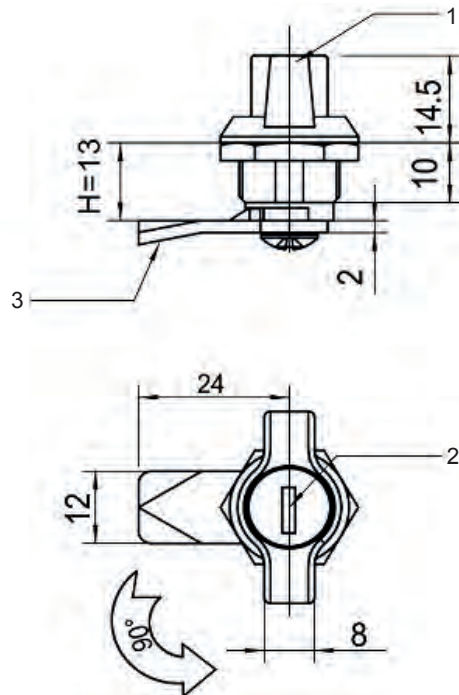
5N7** - KEY LOCK



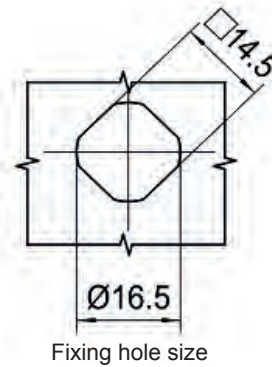
Lock Part Number Keyed alike (KA) (cam excluded)	Lock Part Number Keyed differently (KD) (cam excluded)	S ±0,5
5N716CPNRAOAW	5N716CPNRAODW	16
5N720CPNRAOAW	5N720CPNRAODW	20
5N725CPNRAOAW	5N725CPNRAODW	25
5N730CPNRAOAW	5N730CPNRAODW	30
5N735CPNRAOAW	5N735CPNRAODW	35

Ref	Part description	Material - Finishing
1	Body M19X1,25	Zinc alloy - Bright chrome
2	Nut M19X1,25	Zinc alloy - Bright chrome
3	Screw M4X5	Steel - White zinc Cr6 free
4	Washer	Steel - White zinc Cr6 free
5	Cup	Stainless steel - Polished
6	Washer	Steel - White zinc Cr6 free
7	Protection washer	Nylon
8	Key (2)	Nickel

FH815.2 - KEY LOCK, CENTRAL WING



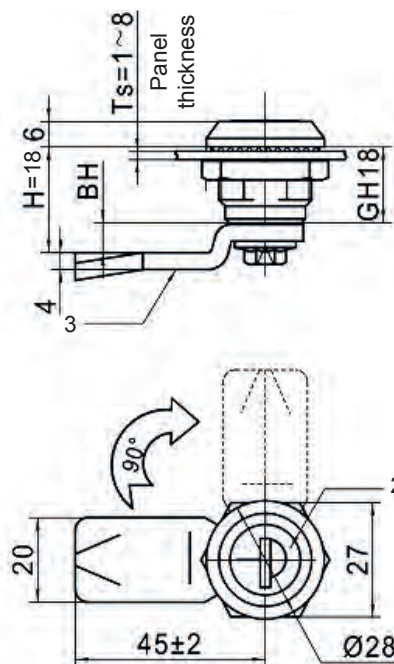
Panel thickness
6 mm max.



Lock Part Number
FH815.2

Ref	Part description	Material - Finishing
1	Body	Zinc alloy - Black painted
2	Cylinder	Zinc alloy - Nikel plated
3	Cam	Steel - White zinc Cr6 free

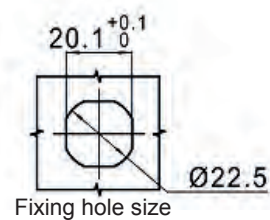
FH705.3E - KEY LOCK



FH001HP (optional)



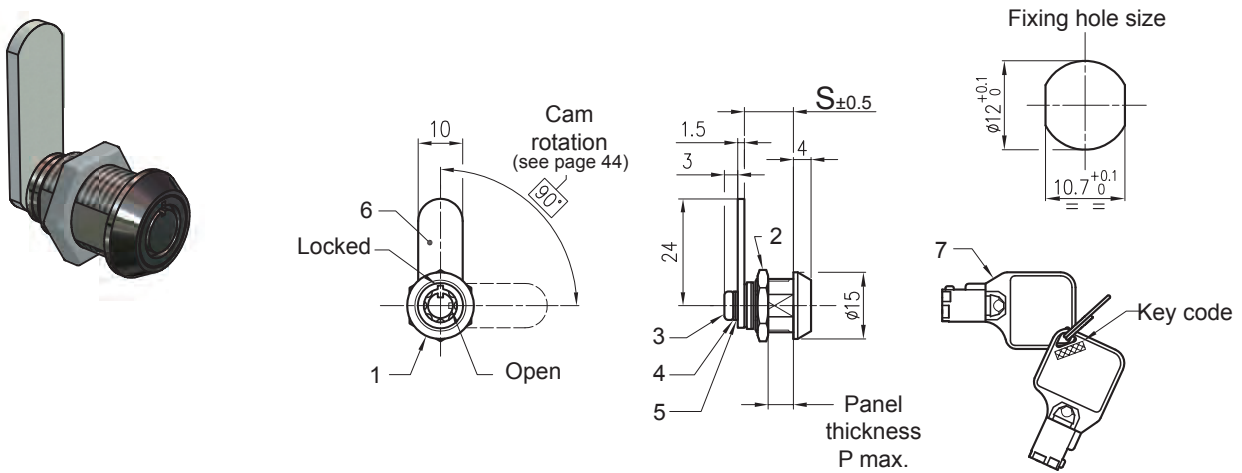
FH001WP (optional)



Lock Part Number
FH705.3E

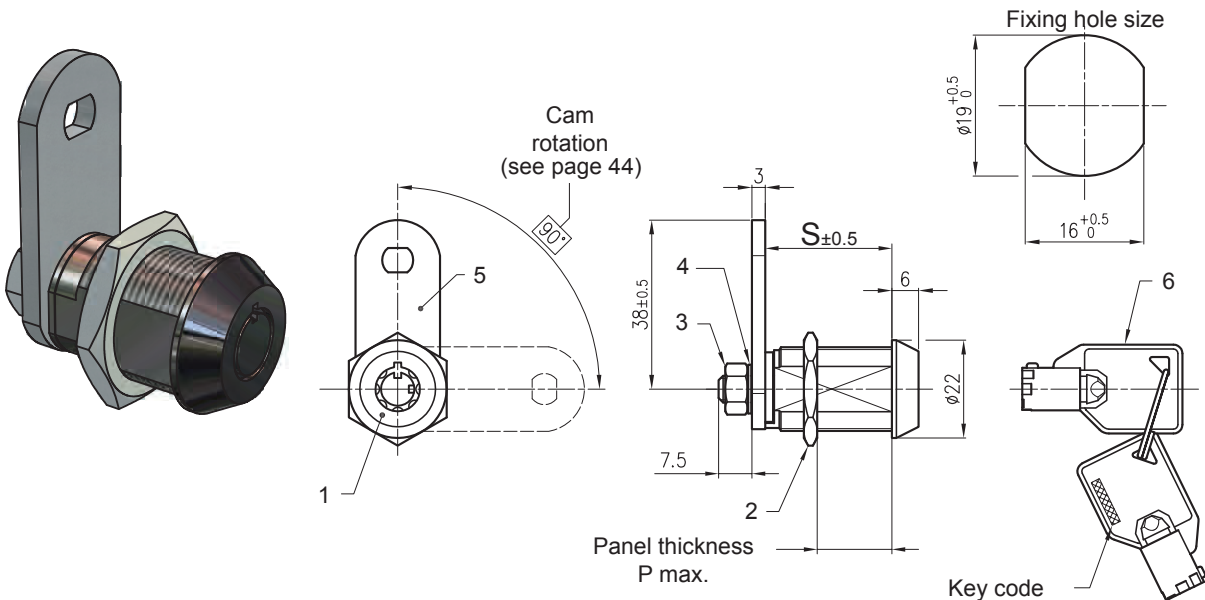
Ref	Part description	Material - Finishing
1	Body	Zinc alloy - Black painted
2	Cylinder	Zinc alloy - Nikel plated
3	Cam	Steel - White zinc Cr6 free

C200B - TUBULAR KEY LOCK



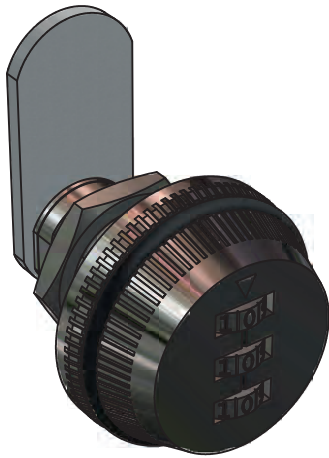
Lock Part Number	P max.	S ±0,5	Ref	Part description	Material - Finishing
C200BS	5	11	1	Body M12X1	Zinc alloy - Bright chrome
C200BL	6,5	12,9	2	Nut M12X1 Ch. 15	Zinc alloy - White zinc Cr6 free
C200BXL	8	16	3	Screw M3X6	Steel - White zinc Cr6 free
			4	Washer	Steel - White zinc Cr6 free
			5	Spring washer	Steel - White zinc Cr6 free
			6	Cam	FeP02 - White zinc Cr6 free
			7	Key, 500 different key codes (2)	Nickel

C400B - TUBULAR KEY LOCK

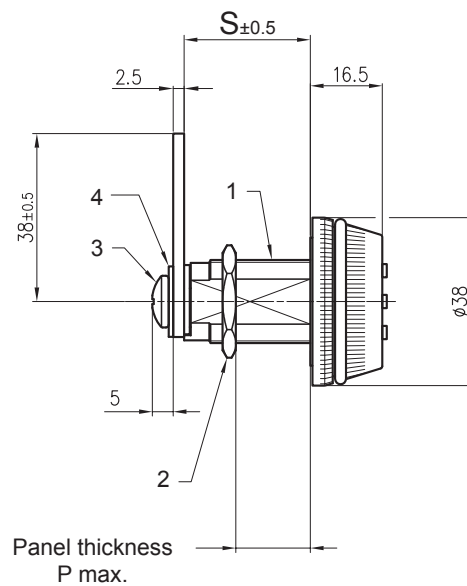
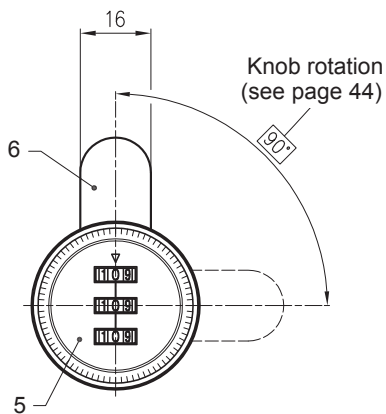
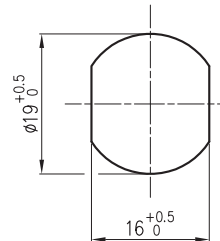


Lock Part Number	P max.	S ±0,5	Ref	Part description	Material - Finishing
C400BXS	5	12,5	1	Body	Zinc alloy - Bright chrome
C400BS	8	17	2	Nut	Zinc alloy - White zinc Cr6 free
C400BM	12	22	3	Nut	Steel - White zinc Cr6 free
C400BN	12	24	4	Spring washer	Steel - White zinc Cr6 free
C400BL	20	28,5	5	Cam	FeP02 - White zinc Cr6 free
C400BXL	22	30	6	Key, 50.000 different key codes (2)	Nickel

C400.*001 - CODED LOCK



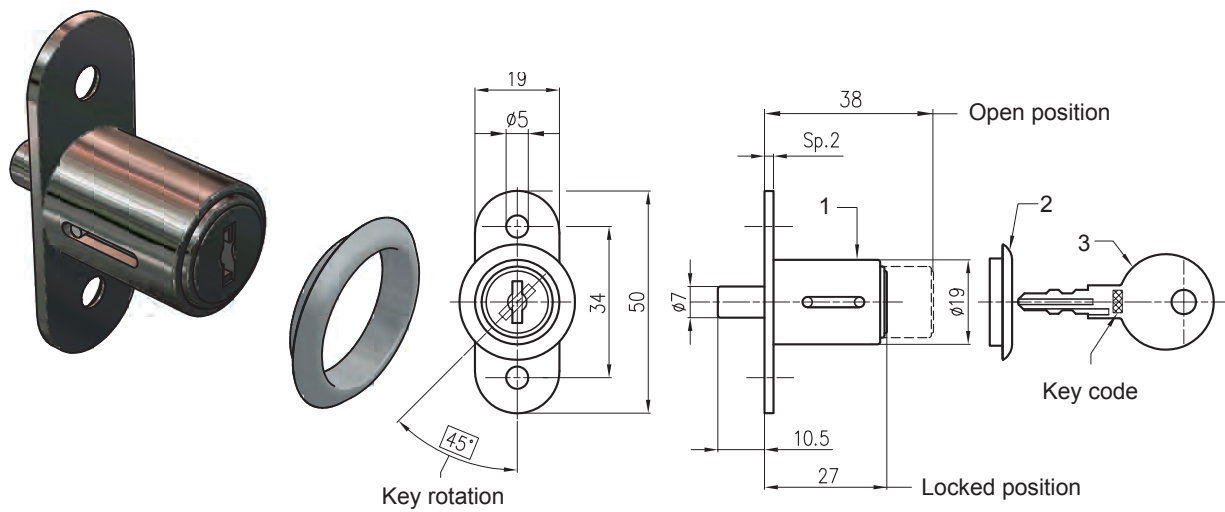
Fixing hole size



Lock Part Number Knob - Bright chrome	Lock Part Number Knob - Black painting	P max.	S ±0,5
C400.2001.CP	C400.2001.BK	5	17,5
C400.3001.CP	C400.3001.BK	10	22,5
C400.4001.CP	C400.4001.BK	17	29,5

Ref	Part description	Material - Finishing
1	Body 3/4" - 27 Ch. 22	Zinc alloy - Bright chrome
2	Nut 3/4" - 27 Ch. 22	Zinc alloy - Bright chrome
3	Screw	Steel - White zinc Cr6 free
4	Washer	Steel - White zinc Cr6 free
5	Knob with combination	Zinc alloy - See table
6	Cam	FeP02 - White zinc Cr6 free

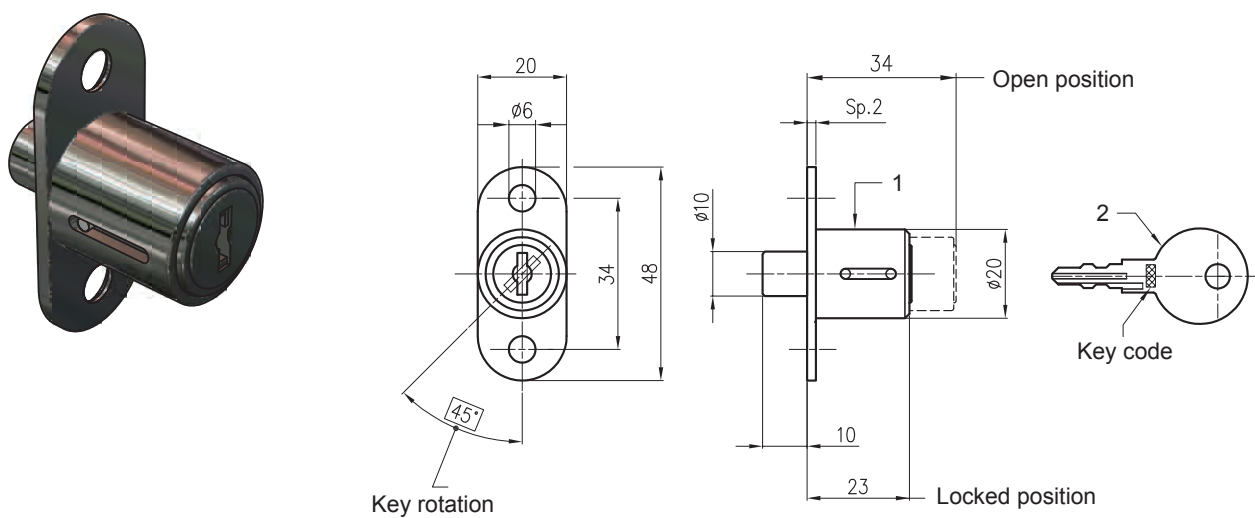
301.H - SLIDING DOOR LOCK



Lock Part Number
301.H

Ref	Part description	Material - Finishing
1	Body	Zinc alloy - Bright chrome
2	Housing	Steel - White zinc Cr6 free
3	Key, 240 different key codes (2)	Nickel

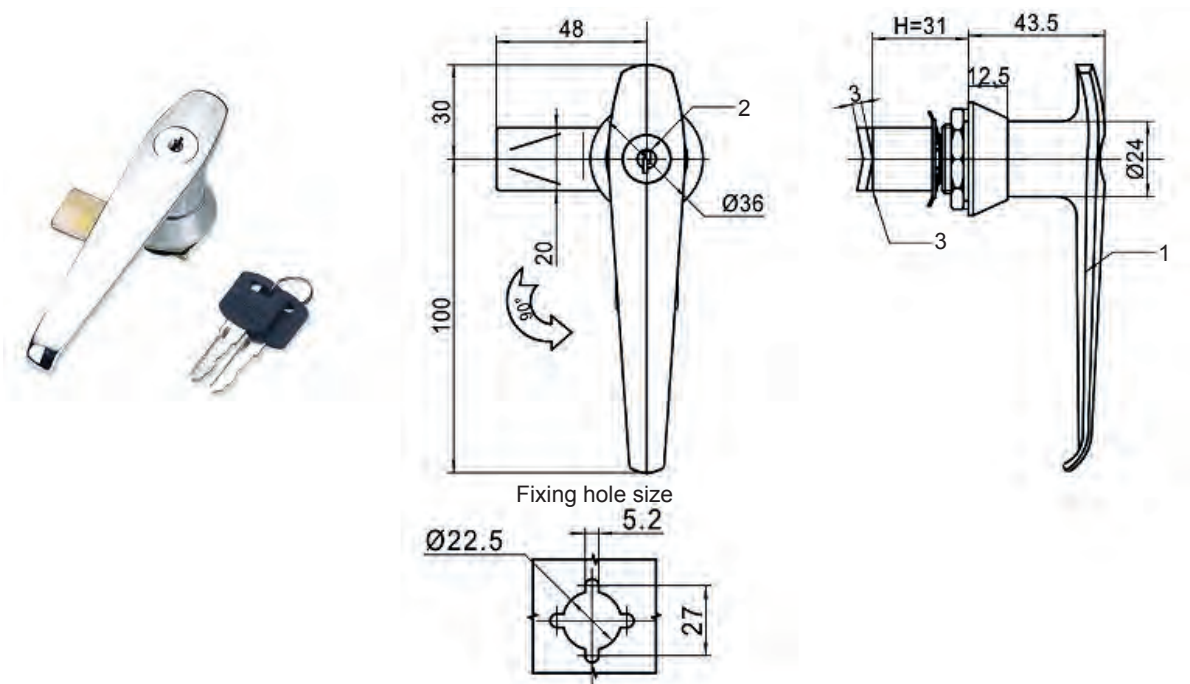
301.HM - SLIDING DOOR LOCK



Lock Part Number
301.HM.KA.1C

Ref	Part description	Material - Finishing
1	Body	Zinc alloy - Bright chrome
2	Key, 240 different key codes (2)	Nickel

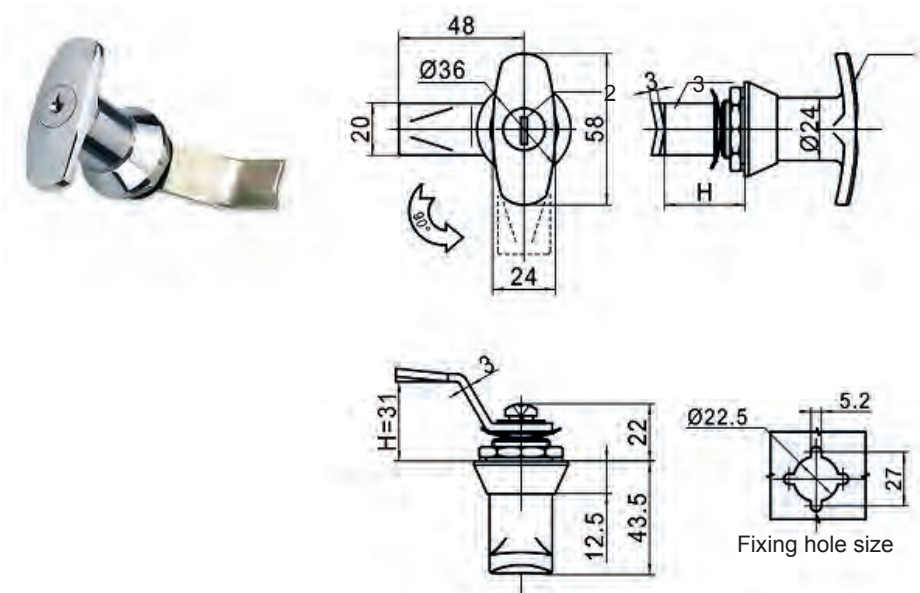
FH304 - KEY LOCK, HANDLE



Lock Part Number
FH304

Ref	Part description	Material - Finishing
1	Handle	Zinc alloy - Brighty crhrome
2	Cylinder	Zinc alloy - Brighty crhrome
3	Cam	Steel - White zinc Cr6 free

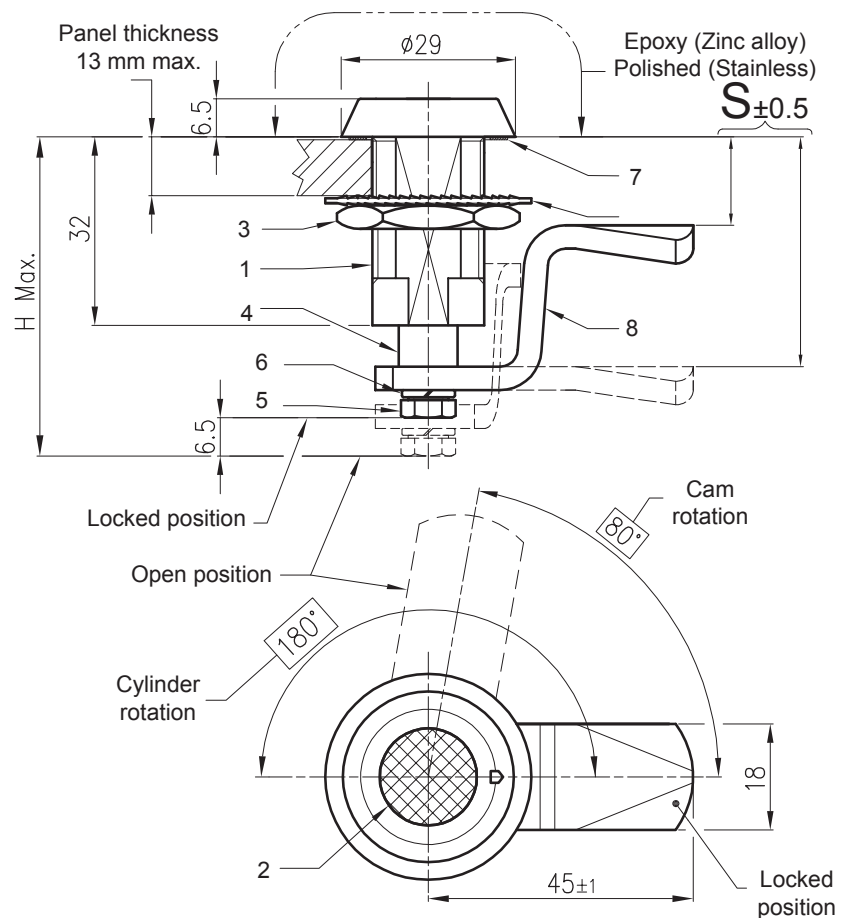
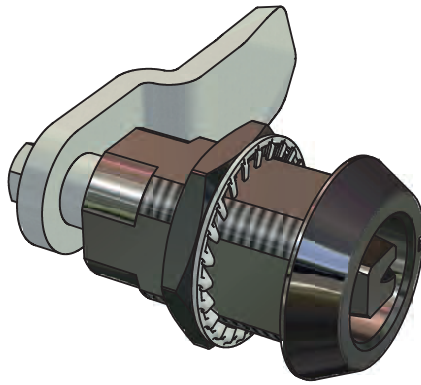
FH305.1 - KEY LOCK, T-HANDLE



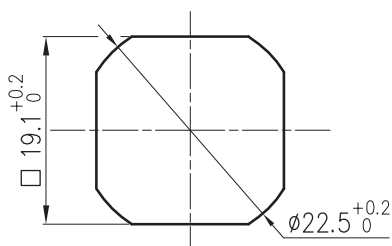
Lock Part Number
FH305.1

Ref	Part description	Material - Finishing
1	Handle	Zinc alloy - Brighty crhrome
2	Cylinder	Zinc alloy - Brighty crhrome
3	Cam	Steel - White zinc Cr6 free

FL91BR.7** - COMPRESSION LOCK - RH



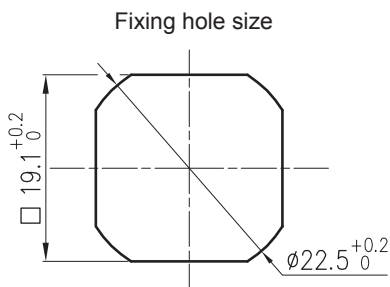
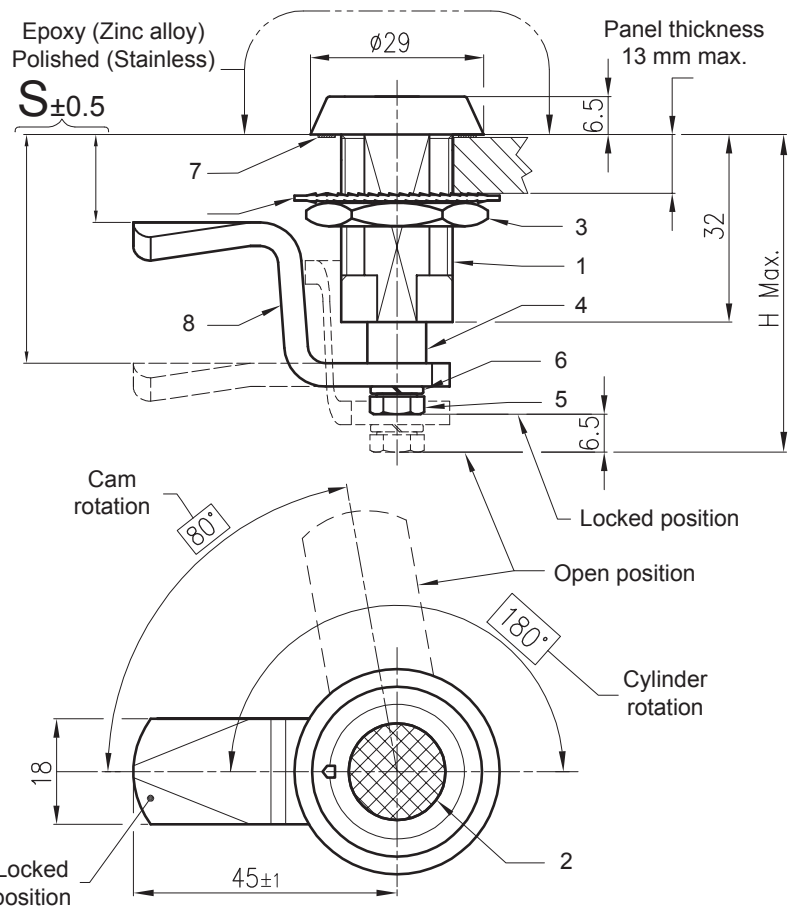
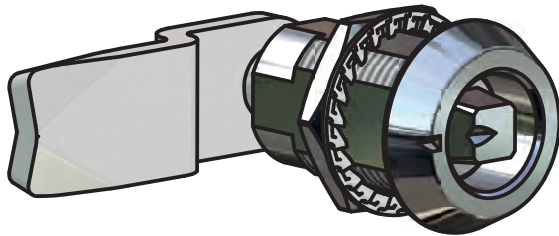
Fixing hole size



Insert * head style "code" and $\phi\phi$ material "code" into lock part number (see page 34)

Ref	Part description	ZINC ALLOY CHROME (BC) Material - Finishing	STAINLESS STEEL (BP) Material - Finishing	ZINC ALLOY EPOXY (BK) Material - Finishing
1	Housing	Zinc alloy - Bright chrome	AISI304 - polished	Zinc alloy - Epoxy black
2	Cylinder	9SMnPb36 - Bright chrome	AISI303 - polished	9SMnPb36 - Epoxy black
3	Nut M22X1,5 Ch. 27	Steel - White zinc Cr6 free	AISI303	Steel - White zinc Cr6 free
4	Rotation stud	9SMnPb36 - White zinc	AISI303	9SMnPb36 - White zinc
5	Screw	AISI304	AISI304	AISI304
6	Washer	AISI304	AISI304	AISI304
7	Protection washer	NBR	NBR	NBR
8	Cam	Steel - White zinc Cr6 free	AISI304 - polished	Steel - White zinc Cr6 free

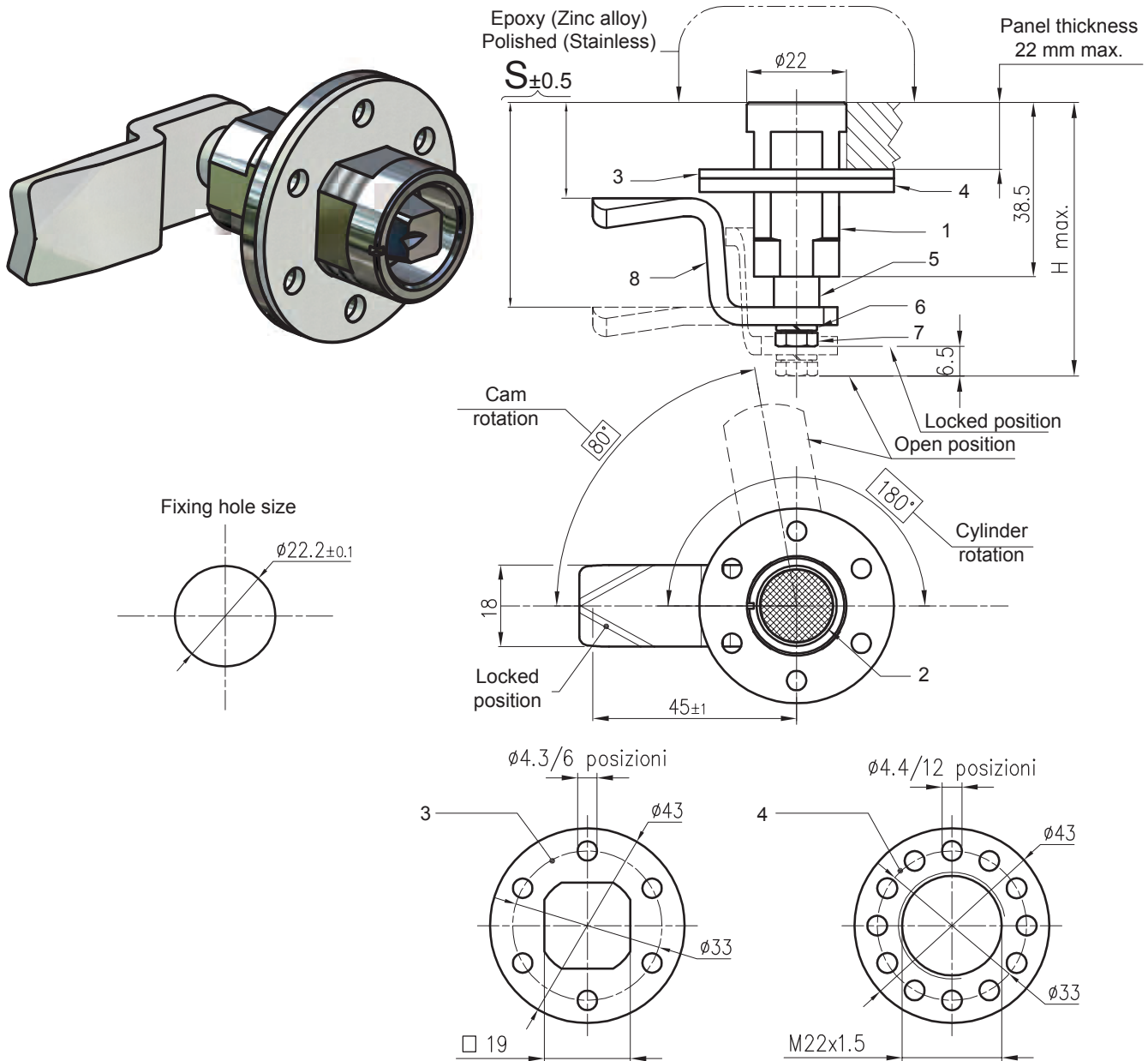
FL91BR.7**L - COMPRESSION LOCK - LH



Insert * head style "code" and $\phi\phi$ material "code" into lock part number (see page 34)

Ref	Part description	ZINC ALLOY CHROME (BC) Material - Finishing	STAINLESS STEEL (BP) Material - Finishing	ZINC ALLOY EPOXY (BK) Material - Finishing
1	Housing	Zinc alloy - Bright chrome	AISI304 - polished	Zinc alloy - Epoxy black
2	Cylinder	9SMnPb36 - Bright chrome	AISI303 - polished	9SMnPb36 - Epoxy black
3	Nut M22X1,5 Ch. 27	Steel - White zinc Cr6 free	AISI303	Steel - White zinc Cr6 free
4	Rotation stud	9SMnPb36 - White zinc	AISI303	9SMnPb36 - White zinc
5	Screw	AISI304	AISI304	AISI304
6	Washer	AISI304	AISI304	AISI304
7	Protection washer	NBR	NBR	NBR
8	Cam	Steel - White zinc Cr6 free	AISI304 - polished	Steel - White zinc Cr6 free

FL91BR.5**L - COMPRESSION LOCK - LH



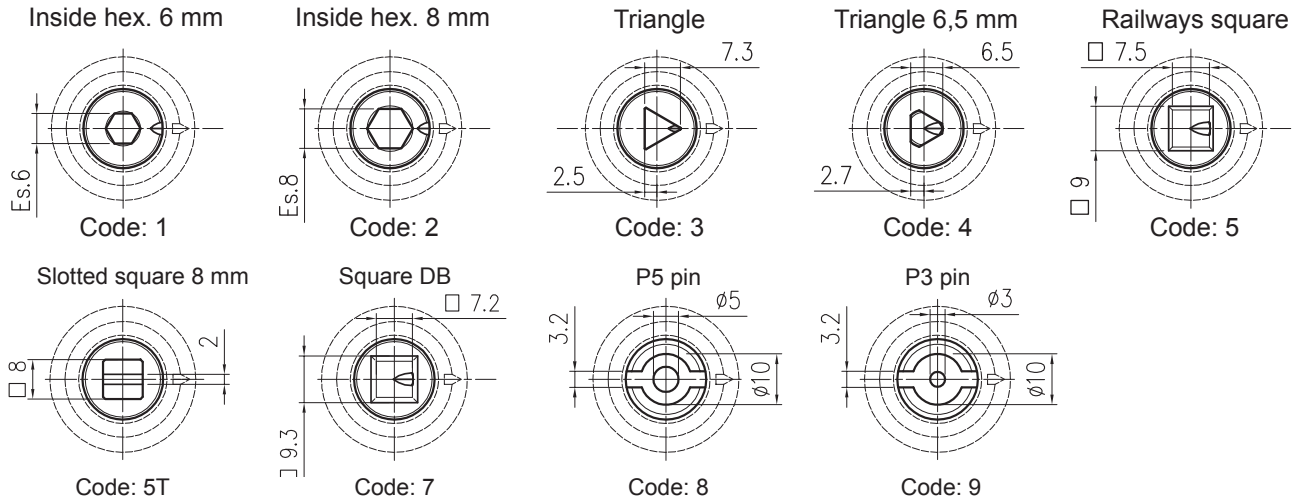
Insert * head style "code" and $\phi\phi$ material "code" into lock part number (see page 34)

Ref	Part description	ZINC ALLOY CHROME (BC) Material - Finishing	STAINLESS STEEL (BP) Material - Finishing	ZINC ALLOY EPOXY (BK) Material - Finishing
1	Housing	Zinc alloy - Bright chrome	AISI304 - polished	Zinc alloy - Epoxy black
2	Cylinder	9SMnPb36 - Bright chrome	AISI303 - polished	9SMnPb36 - Epoxy black
3	Antirotation flange	Steel - White zinc Cr6 free	AISI304	Steel - White zinc Cr6 free
4	Fixing flange	Steel - White zinc Cr6 free	AISI304	Steel - White zinc Cr6 free
5	Rotation stud	9SMnPb36 - White zinc	AISI303	9SMnPb36 - White zinc
6	Screw	AISI304	AISI304	AISI304
7	Washer	AISI304	AISI304	AISI304
8	Cam	Steel - White zinc Cr6 free	AISI304 - polished	Steel - White zinc Cr6 free

FL91BR.7 / FL91BR.5 - PART NUMBER SELECTION CHART

Insert * head style "code" and $\phi\phi$ material "code" into lock part number.

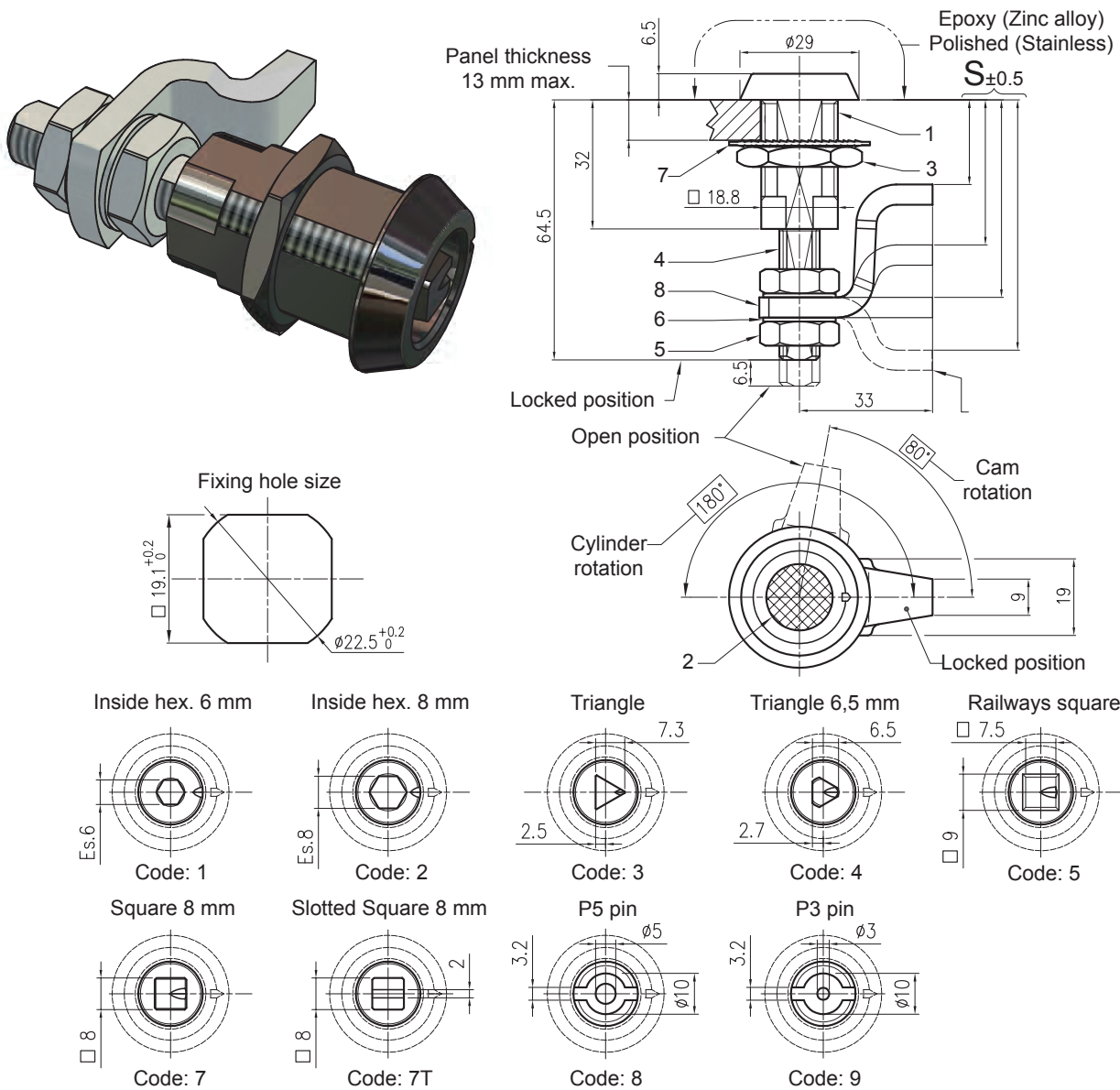
Locking thickness S different from the following ones are available on request; minimum quantity order will be applied.



Material	Material code $\phi\phi$
Zinc alloy - Bright chrome	BC
Zinc alloy - Epoxy black	BP
Stainless steel	BK

Lock part number serie 7** (page 30)	Lock part number serie 7**L (page 31)	Lock part number serie 5** (page 32)	Lock part number serie 5**L (page 33)	H max.	S $\pm 0,5$
FL91BR.710.* $\phi\phi$	FL91BR.710L.* $\phi\phi$	FL91BR.510.* $\phi\phi$	FL91BR.510L.* $\phi\phi$	49,5	10
FL91BR.711.* $\phi\phi$	FL91BR.711L.* $\phi\phi$	FL91BR.511.* $\phi\phi$	FL91BR.511L.* $\phi\phi$	50,5	11
FL91BR.702.* $\phi\phi$	FL91BR.702L.* $\phi\phi$	FL91BR.502.* $\phi\phi$	FL91BR.502L.* $\phi\phi$	51,5	12
FL91BR.714.* $\phi\phi$	FL91BR.714L.* $\phi\phi$	FL91BR.514.* $\phi\phi$	FL91BR.514L.* $\phi\phi$	53,5	14
FL91BR.705.* $\phi\phi$	FL91BR.705L.* $\phi\phi$	FL91BR.505.* $\phi\phi$	FL91BR.505L.* $\phi\phi$	54,5	15
FL91BR.716.* $\phi\phi$	FL91BR.716L.* $\phi\phi$	FL91BR.516.* $\phi\phi$	FL91BR.516L.* $\phi\phi$	55,5	16
FL91BR.720.* $\phi\phi$	FL91BR.720L.* $\phi\phi$	FL91BR.520.* $\phi\phi$	FL91BR.520L.* $\phi\phi$	49,5	20
FL91BR.721.* $\phi\phi$	FL91BR.721L.* $\phi\phi$	FL91BR.521.* $\phi\phi$	FL91BR.521L.* $\phi\phi$	50,5	21
FL91BR.722.* $\phi\phi$	FL91BR.722L.* $\phi\phi$	FL91BR.522.* $\phi\phi$	FL91BR.522L.* $\phi\phi$	51,5	22
FL91BR.723.* $\phi\phi$	FL91BR.723L.* $\phi\phi$	FL91BR.523.* $\phi\phi$	FL91BR.523L.* $\phi\phi$	49,5	23
FL91BR.724.* $\phi\phi$	FL91BR.724L.* $\phi\phi$	FL91BR.524.* $\phi\phi$	FL91BR.524L.* $\phi\phi$	50,5	24
FL91BR.708.* $\phi\phi$	FL91BR.708L.* $\phi\phi$	FL91BR.508.* $\phi\phi$	FL91BR.508L.* $\phi\phi$	51,5	25
FL91BR.726.* $\phi\phi$	FL91BR.726L.* $\phi\phi$	FL91BR.526.* $\phi\phi$	FL91BR.526L.* $\phi\phi$	55,5	26
FL91BR.709.* $\phi\phi$	FL91BR.709L.* $\phi\phi$	FL91BR.509.* $\phi\phi$	FL91BR.509L.* $\phi\phi$	53,5	27
FL91BR.728.* $\phi\phi$	FL91BR.728L.* $\phi\phi$	FL91BR.528.* $\phi\phi$	FL91BR.528L.* $\phi\phi$	49,5	28
FL91BR.729.* $\phi\phi$	FL91BR.729L.* $\phi\phi$	FL91BR.529.* $\phi\phi$	FL91BR.529L.* $\phi\phi$	50,5	29
FL91BR.706.* $\phi\phi$	FL91BR.706L.* $\phi\phi$	FL91BR.506.* $\phi\phi$	FL91BR.506L.* $\phi\phi$	51,5	30
FL91BR.732.* $\phi\phi$	FL91BR.732L.* $\phi\phi$	FL91BR.532.* $\phi\phi$	FL91BR.532L.* $\phi\phi$	53,5	32
FL91BR.733.* $\phi\phi$	FL91BR.733L.* $\phi\phi$	FL91BR.533.* $\phi\phi$	FL91BR.533L.* $\phi\phi$	54,5	33
FL91BR.734.* $\phi\phi$	FL91BR.734L.* $\phi\phi$	FL91BR.534.* $\phi\phi$	FL91BR.534L.* $\phi\phi$	49,5	34
FL91BR.735.* $\phi\phi$	FL91BR.735L.* $\phi\phi$	FL91BR.535.* $\phi\phi$	FL91BR.535L.* $\phi\phi$	50,5	35
FL91BR.736.* $\phi\phi$	FL91BR.736L.* $\phi\phi$	FL91BR.536.* $\phi\phi$	FL91BR.536L.* $\phi\phi$	51,5	36
FL91BR.737.* $\phi\phi$	FL91BR.737L.* $\phi\phi$	FL91BR.537.* $\phi\phi$	FL91BR.537L.* $\phi\phi$	63,5	37
FL91BR.700.* $\phi\phi$	FL91BR.700L.* $\phi\phi$	FL91BR.500.* $\phi\phi$	FL91BR.500L.* $\phi\phi$	53,5	38
FL91BR.739.* $\phi\phi$	FL91BR.739L.* $\phi\phi$	FL91BR.539.* $\phi\phi$	FL91BR.539L.* $\phi\phi$	54,5	39
FL91BR.701.* $\phi\phi$	FL91BR.701L.* $\phi\phi$	FL91BR.501.* $\phi\phi$	FL91BR.501L.* $\phi\phi$	55,5	40
FL91BR.742.* $\phi\phi$	FL91BR.742L.* $\phi\phi$	FL91BR.542.* $\phi\phi$	FL91BR.542L.* $\phi\phi$	63,5	42
FL91BR.707.* $\phi\phi$	FL91BR.707L.* $\phi\phi$	FL91BR.507.* $\phi\phi$	FL91BR.507L.* $\phi\phi$	63,5	48
FL91BR.758.* $\phi\phi$	FL91BR.758L.* $\phi\phi$	FL91BR.558.* $\phi\phi$	FL91BR.558L.* $\phi\phi$	50,5	58

FL91BR.85.* - COMPRESSION LOCK - RH



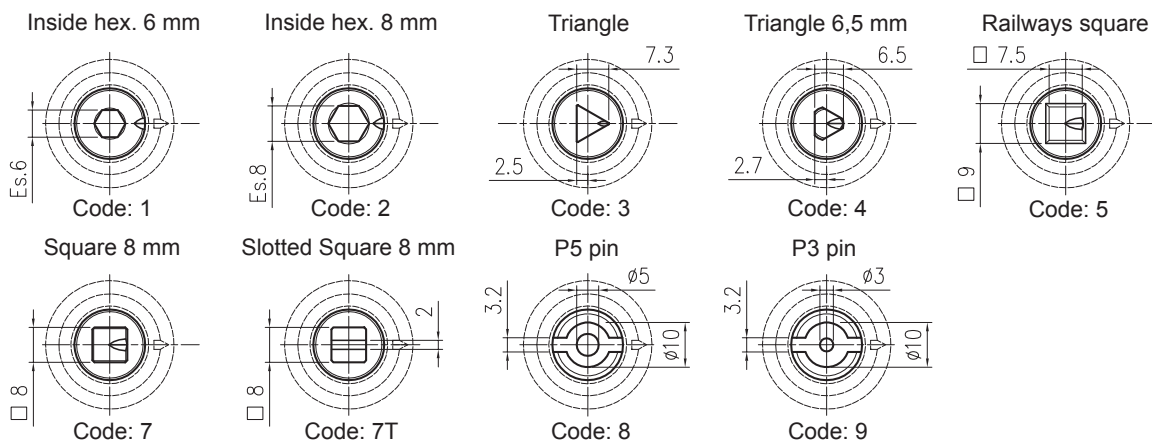
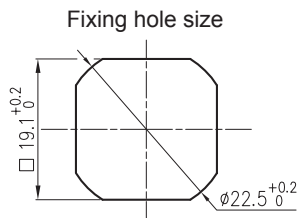
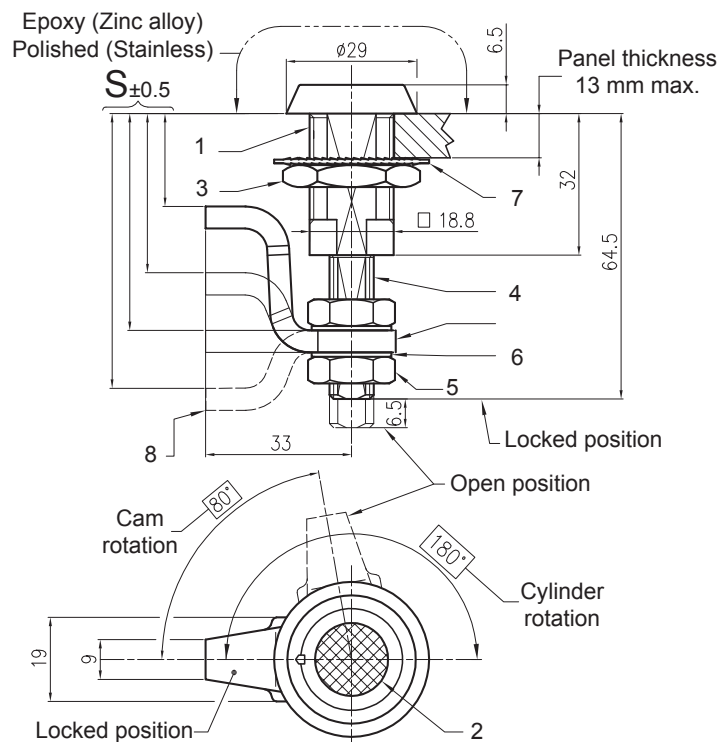
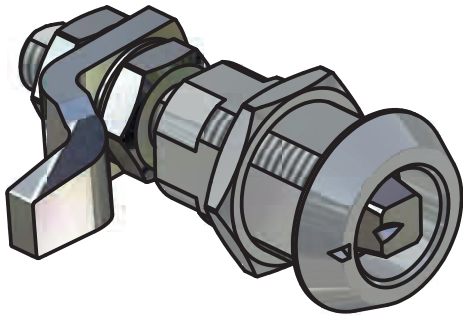
Insert * head style "code" and $\phi\phi$ material "code" into lock part number.

Locking thickness different from the following ones available on request; minimum quantity order will be applied.

Lock Part Number	S $\pm 0,5$	S $\pm 0,5$ Reversed cam
FL91BR.85.*1 $\phi\phi$	11,5 \div 21	67,5 \div 77
FL91BR.85.* $\phi\phi$	26,5 \div 36	52,5 \div 62
FL91BR.85.* 2 $\phi\phi$	39,5 \div 49	-

Ref	Part description	ZINC ALLOY CHROME (BC) Material - Finishing	STAINLESS STEEL (BP) Material - Finishing	ZINC ALLOY EPOXY (BK) Material - Finishing
1	Housing	Zinc alloy - Bright chrome	AISI304 - polished	Zinc alloy - Epoxy black
2	Cylinder	9SMnPb36 - Bright chrome	AISI303 - polished	9SMnPb36 - Epoxy black
3	Nut M22X1,5 Ch. 27	Steel - White zinc Cr6 free	AISI303	Steel - White zinc Cr6 free
4	Rotation stud	9SMnPb36 - White zinc	AISI303	9SMnPb36 - White zinc
5	Nut M10 (2)	Steel - White zinc Cr6 free	AISI303	Steel - White zinc Cr6 free
6	Washer (2)	Steel - White zinc Cr6 free	A2	Steel - White zinc Cr6 free
7	Washer	Steel - White zinc Cr6 free	A2	Steel - White zinc Cr6 free
8	Cam	Steel - White zinc Cr6 free	AISI304 - polished	Steel - White zinc Cr6 free

FL91BR.85L - COMPRESSION LOCK - LH



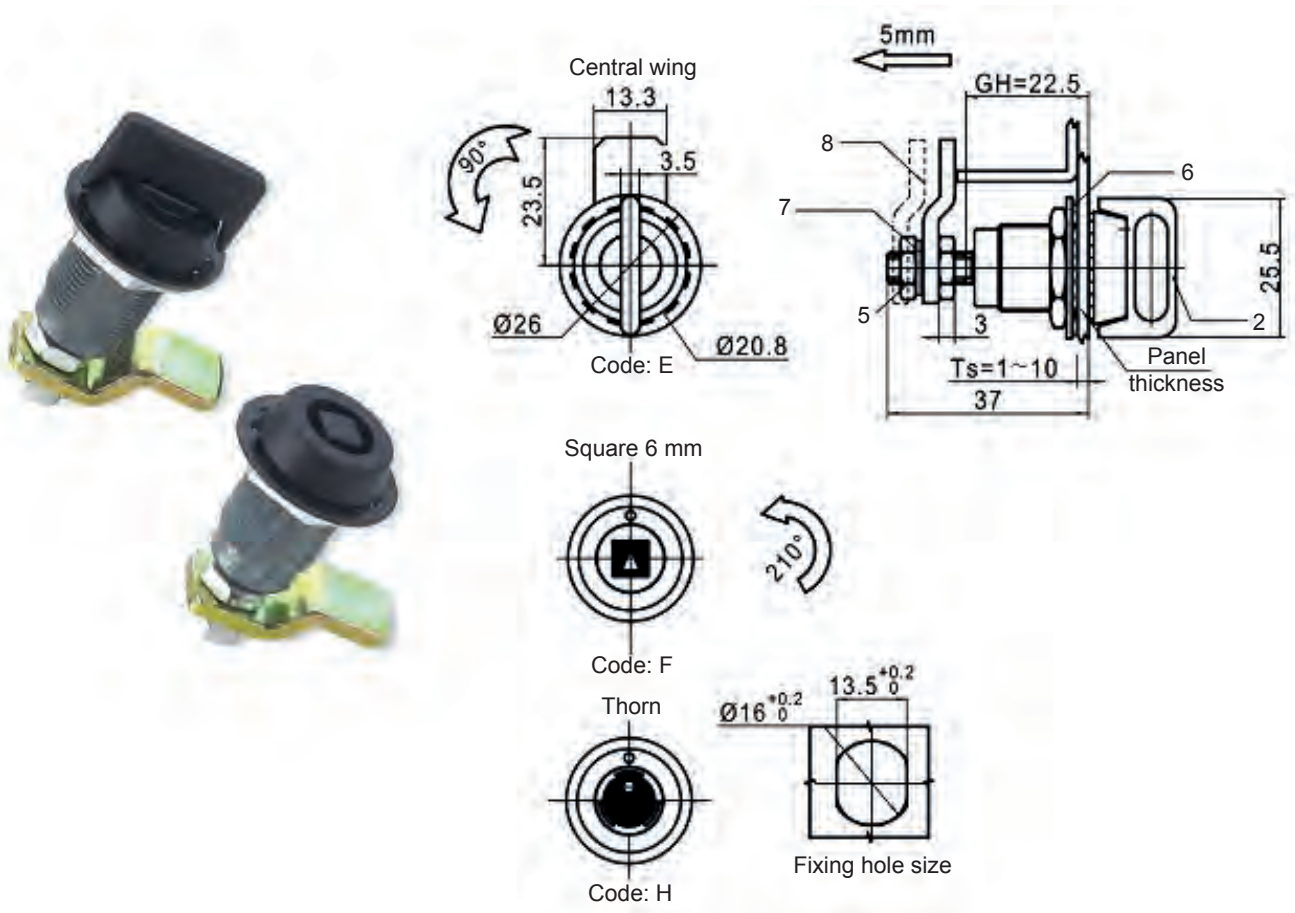
Insert * head style "code" and $\phi\phi$ material "code" into lock part number.

Locking thickness different from the following ones available on request; minimum quantity order will be applied.

Lock Part Number	S ±0,5	S ±0,5 Reversed cam
FL91BR.85L.*1 $\phi\phi$	11,5 ÷ 21	67,5 ÷ 77
FL91BR.85L.* $\phi\phi$	26,5 ÷ 36	52,5 ÷ 62
FL91BR.85L.* 2 $\phi\phi$	39,5 ÷ 49	-

Ref	Part description	ZINC ALLOY CHROME (BC) Material - Finishing	STAINLESS STEEL (BP) Material - Finishing	ZINC ALLOY EPOXY (BK) Material - Finishing
1	Housing	Zinc alloy - Bright chrome	AISI304 - polished	Zinc alloy - Epoxy black
2	Cylinder	9SMnPb36 - Bright chrome	AISI303 - polished	9SMnPb36 - Epoxy black
3	Nut M22X1,5 Ch. 27	Steel - White zinc Cr6 free	AISI303	Steel - White zinc Cr6 free
4	Rotation stud	9SMnPb36 - White zinc	AISI303	9SMnPb36 - White zinc
5	Nut M10 (2)	Steel - White zinc Cr6 free	AISI303	Steel - White zinc Cr6 free
6	Washer (2)	Steel - White zinc Cr6 free	A2	Steel - White zinc Cr6 free
7	Washer	Steel - White zinc Cr6 free	A2	Steel - White zinc Cr6 free
8	Cam	Steel - White zinc Cr6 free	AISI304 - polished	Steel - White zinc Cr6 free

FL91BR.361.*BK COMPRESSION LOCK, MINI VERSION



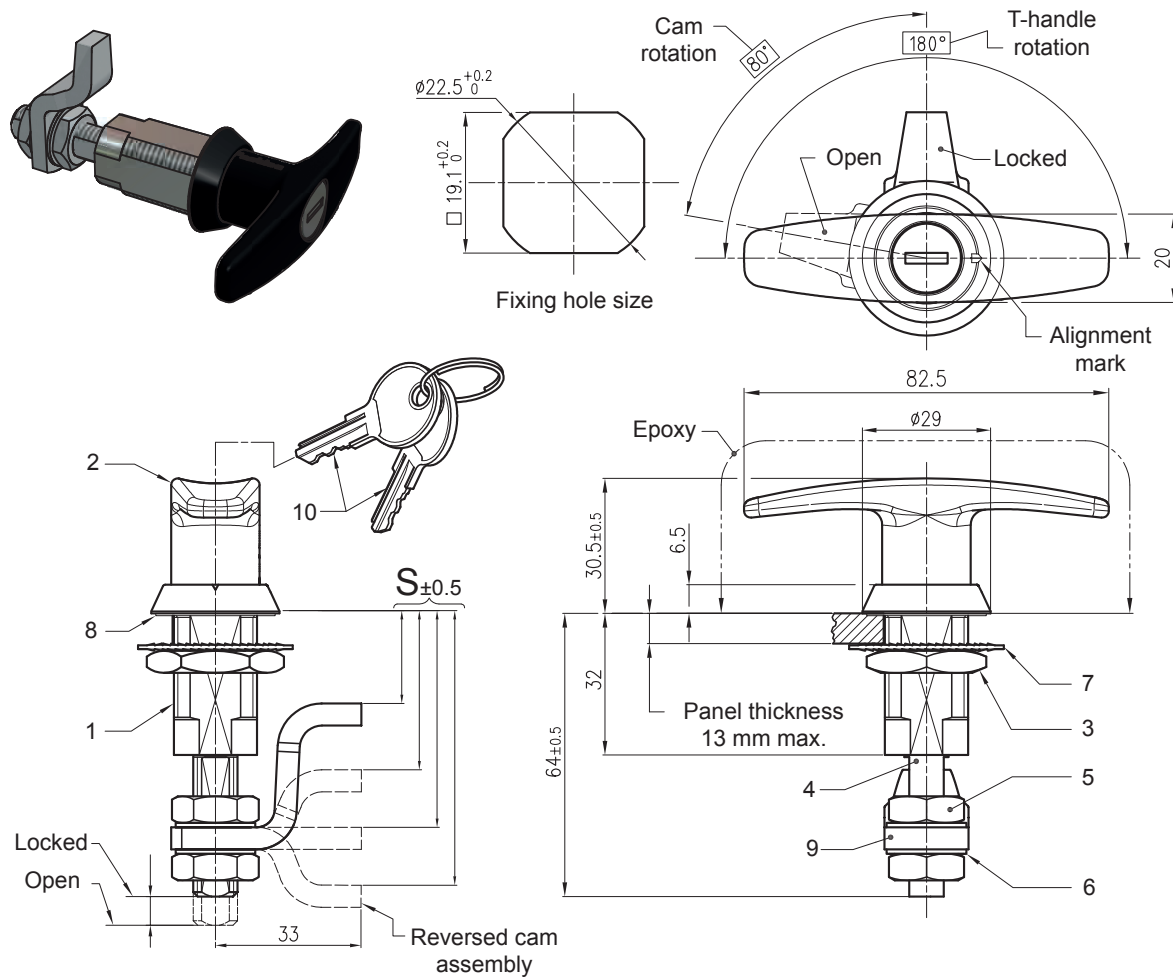
Insert * head style "code" into lock part number.

© Standard version - for other version minimum order quantity 1.000 pcs.

Lock Part Number	Spessore serrabile ±0,5	Spessore serrabile ±0,5 Cam invertita	Offset Cam
FL91BR.361.*1BK	30,5	--	0
FL91BR.361.*2BK	26,5	34,5	4
FL91BR.361.*3BK ©	22,5	38,5	8
FL91BR.361.*4BK	18,5	42,5	12
FL91BR.361.*5BK	14,5	38,5	16
FL91BR.361.*6BK	10,5	34,5	20

Ref	Part description	Material - Finishing
1	Housing	Zinc alloy - Black painted
2	Cylinder	Zinc alloy - Black painted
3	Nut M22X1,5 Ch. 27	Steel - White zinc Cr6 free
4	Rotation pin	Steel - Zinc. irid
5	Nut (2)	Steel - White zinc Cr6 free
6	Ring	Steel - White zinc Cr6 free
7	Ring	Steel - White zinc Cr6 free
8	Cam	Steel - White zinc Cr6 free

FL91BR.85.T* T-HANDLE COMPRESSION LOCK

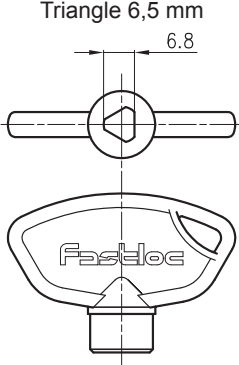
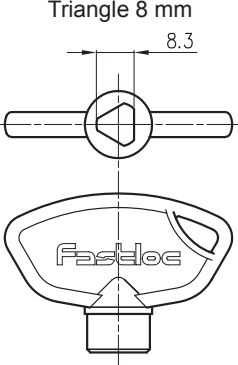
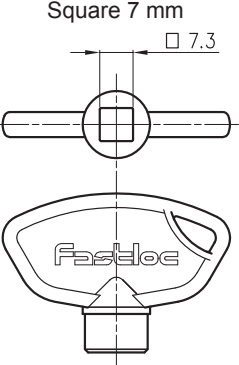
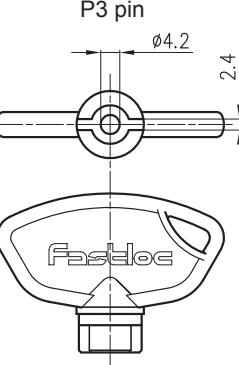


Lock Part Number	S ±0,5	S ±0,5 Reversed cam	Lock version
FL91BR.85.TM0BK	26,5 ÷ 36	52,5 ÷ 62	C31 MERIT CH14607 Key excluded
FL91BR.85.TM1BK	11,5 ÷ 21	67,5 ÷ 77	
FL91BR.85.TM2BK	39,5 ÷ 49	-	
FL91BR.85.TS0BK	26,5 ÷ 36	52,5 ÷ 62	C31 STD CH751 Key excluded
FL91BR.85.TS1BK	11,5 ÷ 21	67,5 ÷ 77	
FL91BR.85.TS2BK	39,5 ÷ 49	-	
FL91BR.85.TC0BK	26,5 ÷ 36	52,5 ÷ 62	C31 STD CH751 2 keys included
FL91BR.85.TC1BK	11,5 ÷ 21	67,5 ÷ 77	
FL91BR.85.TC2BK	39,5 ÷ 49	-	

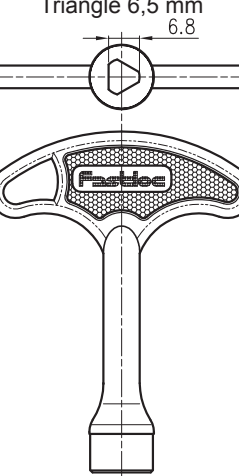
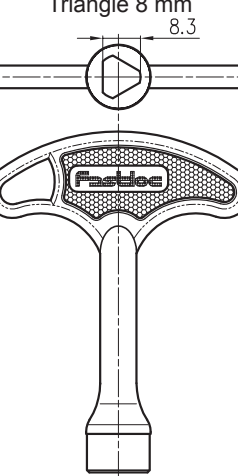
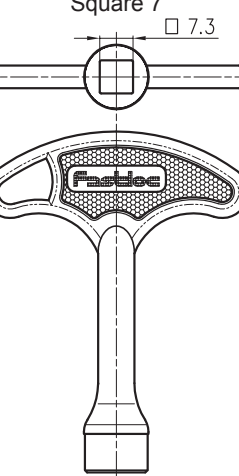
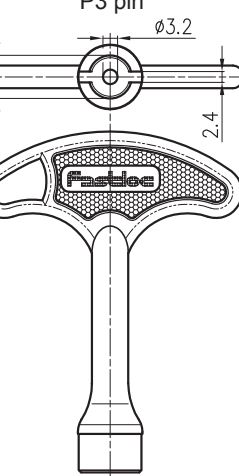
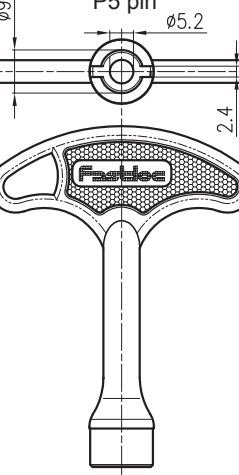
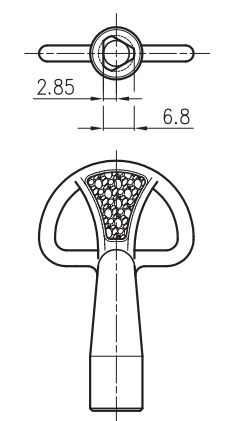
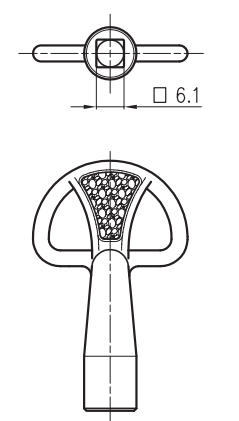
Ref	Part description	ZINC ALLOY EPOXY Material - Finishing
1	Housing	Zinc alloy - Epoxy black
2	T-handle	Zinc alloy - Epoxy black
3	Nut M22X1,5 Ch. 27	Steel - White zinc Cr6 free
4	Rotation stud	9SMnPb36 - White zinc Cr6 free
5	Nut M10 (2)	Steel - White zinc Cr6 free
6	Washer (2)	Steel - White zinc Cr6 free
7	Washer	Steel - White zinc Cr6 free
8	Gasket	NBR
9	Cam	Steel - White zinc Cr6 free
10	Key, keyed CH751 alike (2)	Nickel

SCHLÜSSEL KEY

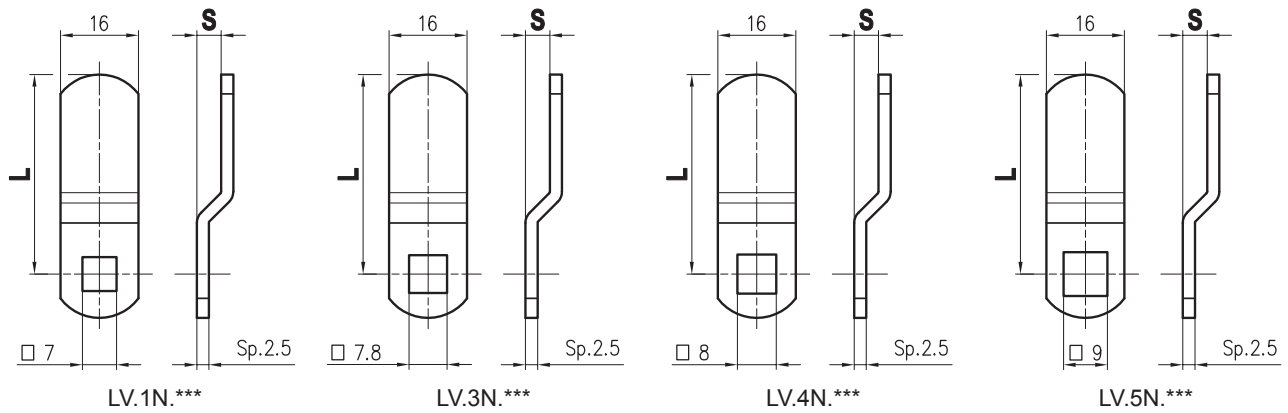
PLASTIC VERSIONS

<p>Triangle 6,5 mm 6.8</p>  <p>Code: CPR.A (Red) Code: CPN.A (Black)</p>	<p>Triangle 8 mm 8.3</p>  <p>Code: CPR.B (Red) Code: CPN.B (Black)</p>	<p>Square 7 mm □ 7.3</p>  <p>Code: CPR.G (Red) Code: CPN.G (Black)</p>	<p>P3 pin ø4.2 2.4</p>  <p>Code: CPR.P (Red) Code: CPN.P (Black)</p>
---	---	--	---

ZINC ALLOY VERSION

<p>Triangle 6,5 mm 6.8</p>  <p>Code: CHC.A</p>	<p>Triangle 8 mm 8.3</p>  <p>Code: CHC.B</p>	<p>Square 7 □ 7.3</p>  <p>Code: CHC.C</p>	<p>P3 pin ø9.5 ø3.2 2.4</p>  <p>Code: CHC.P</p>
<p>ø9.5 P5 pin ø5.2 2.4</p>  <p>Code: CHC.P5</p>	<p>Triangle 6,5 mm 2.85 6.8</p>  <p>Code: CHG.A</p>	<p>Square 6 mm □ 6.1</p>  <p>Code: CHG.F</p>	

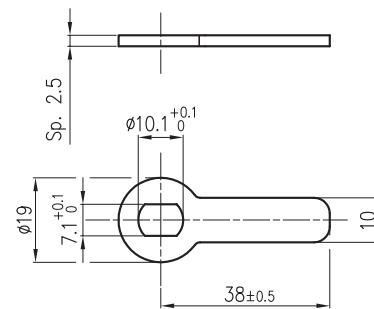
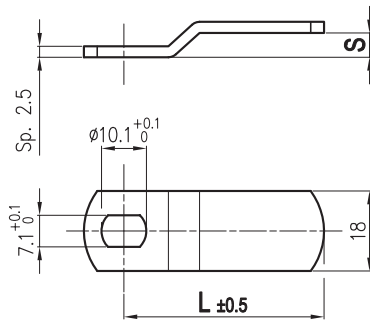
RIEGEL CAM



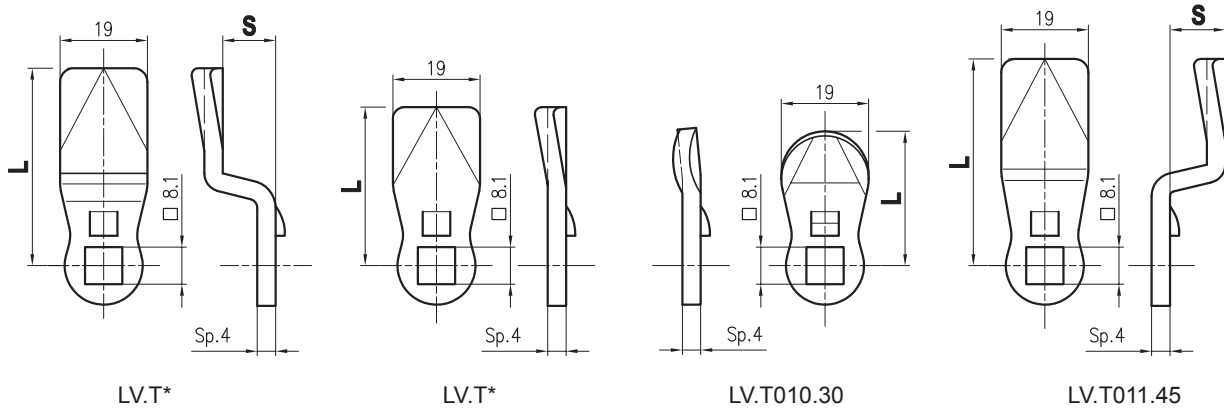
Insert *** cam "code" into cam part number.

L±0,5	S	Code	S	Code	S	Code	S	Code	S	Code	S	Code	S	Code
14	-	100	2	200	3	300	4	400	5	500	7	700	9	900
16	-	101	2	201	3	301	4	401	5	501	7	701	9	901
17	-	102	2	202	3	302	4	402	5	502	7	702	9	902
19	-	103	2	203	3	303	4	403	5	503	7	703	9	903
20	-	104	2	204	3	304	4	404	5	504	7	704	9	904
22	-	105	2	205	3	305	4	405	5	505	7	705	9	905
24	-	106	2	206	3	306	4	406	5	506	7	706	9	906
25	-	107	2	207	3	307	4	407	5	507	7	707	9	907
27	-	108	2	208	3	308	4	408	5	508	7	708	9	908
28	-	109	2	209	3	309	4	409	5	509	7	709	9	909
30	-	110	2	210	3	310	4	410	5	510	7	710	9	910
32	-	111	2	211	3	311	4	411	5	511	7	711	9	911
33	-	112	2	212	3	312	4	412	5	512	7	712	9	912
35	-	113	2	213	3	313	4	413	5	513	7	713	9	913
37	-	114	2	214	3	314	4	414	5	514	7	714	9	914
38	-	115	2	215	3	315	4	415	5	515	7	715	9	915
40	-	116	2	216	3	316	4	416	5	516	7	716	9	916
41	-	117	2	217	3	317	4	417	5	517	7	717	9	917
43	-	118	2	218	3	318	4	418	5	518	7	718	9	918
45	-	119	2	219	3	319	4	419	5	519	7	719	9	919
46	-	120	2	220	3	320	4	420	5	520	7	720	9	920
48	-	121	2	221	3	321	4	421	5	521	7	721	9	921
49	-	122	2	222	3	322	4	422	5	522	7	722	9	922
50	-	123	2	223	3	323	4	423	5	523	7	723	9	923

RIEGEL CAM



L±0,5	S	Cam Part Number
41	0	LV.2D.323.041
44	0	LV.2D.323.044
66	0	LV.2D.323.066
45	5,5	LV.2D.1127
38	6	LV.2D.395

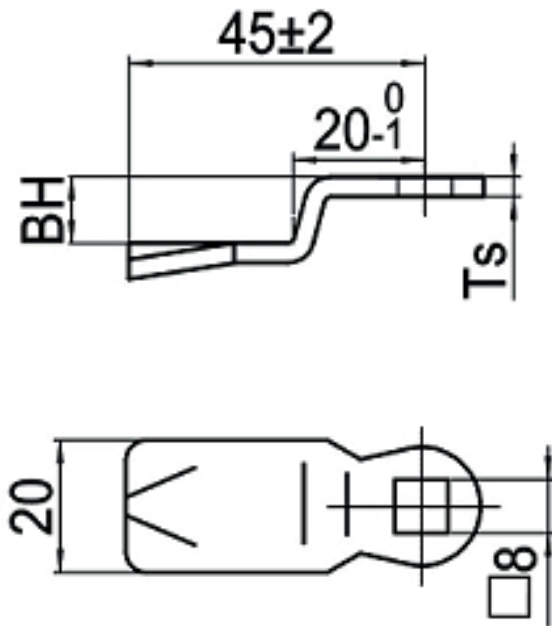


Insert * cam "code" into cam part number.

L±0,5	S	Cam Part Number
45	-12	011.45
30	0	010.30
34	0	001.34
48	0	001.48
45	2	002.45
46	5	003.46
40	7	009.40
45	8	014.45
40	9,5	007.40
43	11,5	004.43
43,3	14,3	005.43
45	17	012.45
45	32	013.45
44	34	008.44

L±0,5	S	Cam Part Number
45	4	104.45
45	10	010.45
45	24	024.45
45	22	022.45
45	3	103.45
45	-8	800.45

RIEGEL CAM

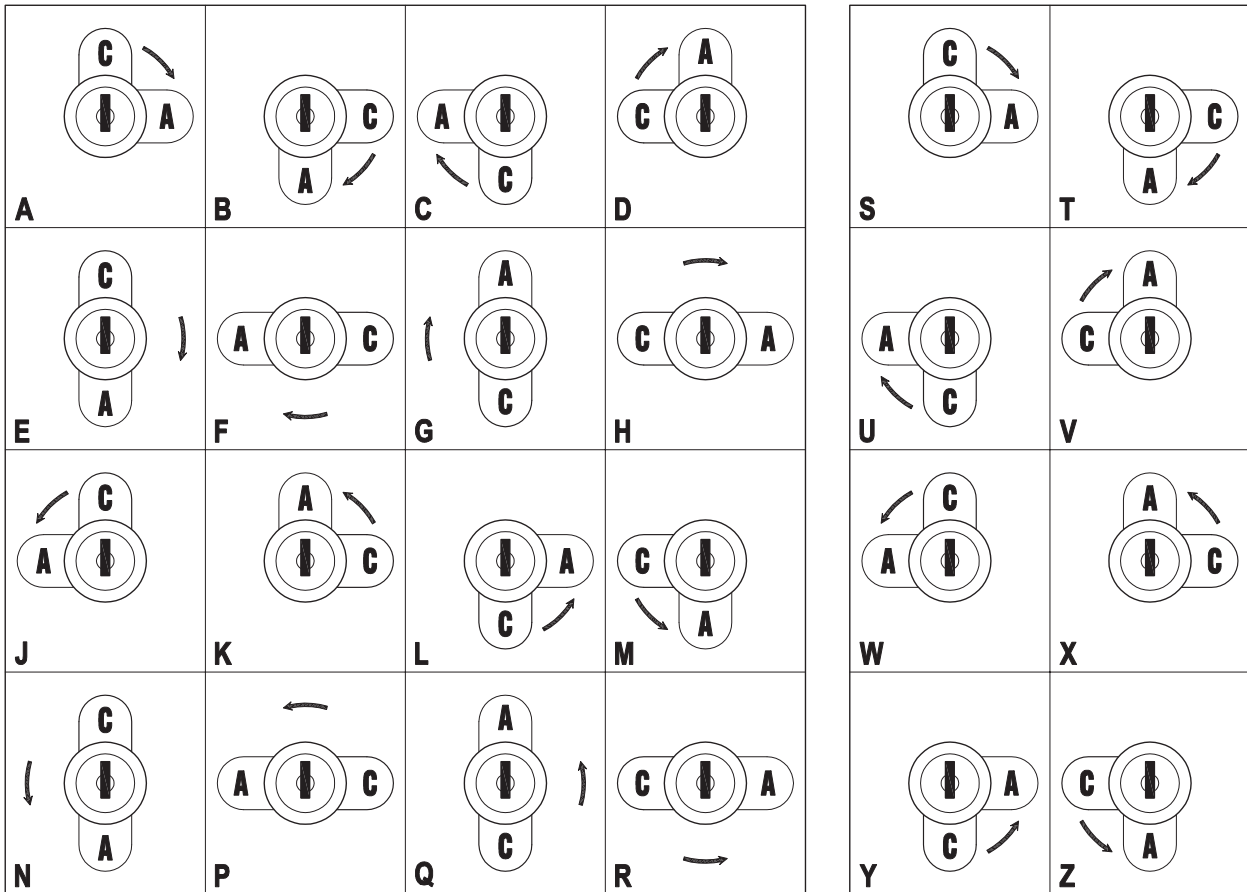


BH	Ts	Cam Part Number
0	3	FH1B4500
2	3	FH1B4502
4	3	FH1B4504
7	3	FH1B4507
8	3	FH1B4508
10	3	FH1B4510
12	3	FH1B4512
14	3	FH1B4514
16	3	FH1B4516
20	3	FH1B4520
22	3	FH1B4522
32	3	FH1B4532
37	3	FH1B4537

ROTATION/KEY OUT DETAILS

2 KEY OUT

1 KEY OUT



Lock Part Number	Page	Rotation/key out
1*520/1*920	3	A, B, C, D, J, K, L, M
5*520/5*920	4	A, B, C, D, J, K, L, M
5*313	5	A, B, C, D, J, K, L, M
5*918	6	A, B, C, D, J, K, L, M
6*918	7	A, B, C, D, J, K, L, M
5E5**	11	A, B, C, D, J, K, L, M
5*516	11	A, B, C, D, J, K, L, M
5*1196	12	A, B, C, D, J, K, L, M
5*1197	13	A, B, C, D, J, K, L, M
5L3218	14	A, B, C, D, J, K, L, M
5M918	15	D (Right), K (Left)
5M932	16	D (Right), K (Left)
5X820	17	A (Right), J (Left)
6X820	17	J
5N016	22	A, B, C, D, J, K, L, M
5N116	22	A, B, C, D, J, K, L, M
5N7**	23	E, F, G, H, N, P, Q, R
5N7**	23	A, B, C, D, J, K, L, M
5N120	25	E, F, G, H, N, P, Q, R
C200B	25	S, T, U, V, W, X, Y, Z
C400B	25	S, T, U, V, W, X, Y, Z
C400.*001	26	A, B, C, D, J, K, L, M



EINPRESSBEFESTIGER
SELF CLINCHING FASTENERS

BLINDNIETMUTTERN
BLIND RIVET NUTS



SCHWEISSBOLZEN
WELDING STUDS



**BLINDNIETEN, SCHLISS-
RINGBOLZEN**
BLIND RIVETS, LOCK BOLTS



KÄFIGMUTTERN
CAGE NUTS

**EINSÄTZE UND
GEWINDETRÄGER**
**INSERTS AND
THREADED PARTS**



**GEWINDEINSÄTZE FÜR
METALLANWENDUNGEN**
**THREAD INSERTS
FOR METALS**



LEICHTBAUBEFESTIGER
LIGHTWEIGHT FASTENERS



VERSCHLUSSELEMENTE
LOCKS

**ZENTRALSCHMIERANLAGEN,
PUMPEN UND VERTEILER**
**CENTRAL LUBRICATION SYSTEMS,
PUMPS AND DISTRIBUTERS**



DICHTSTOPFEN
SEALING PLUGS



SCHNELLKUPPLUNGEN
QUICK COUPLINGS

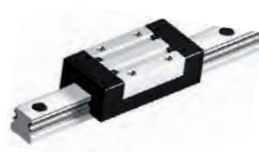


**KUPPLUNGEN UND
MASCHINENELEMENTE**
**COUPLINGS AND MACHINE
ELEMENTS**

PSG LAUFROLLENFÜHRUNG
PSG LINEARMOTION



ALUX-SCHIENENFÜHRUNG
ALUX-GUIDE RAIL



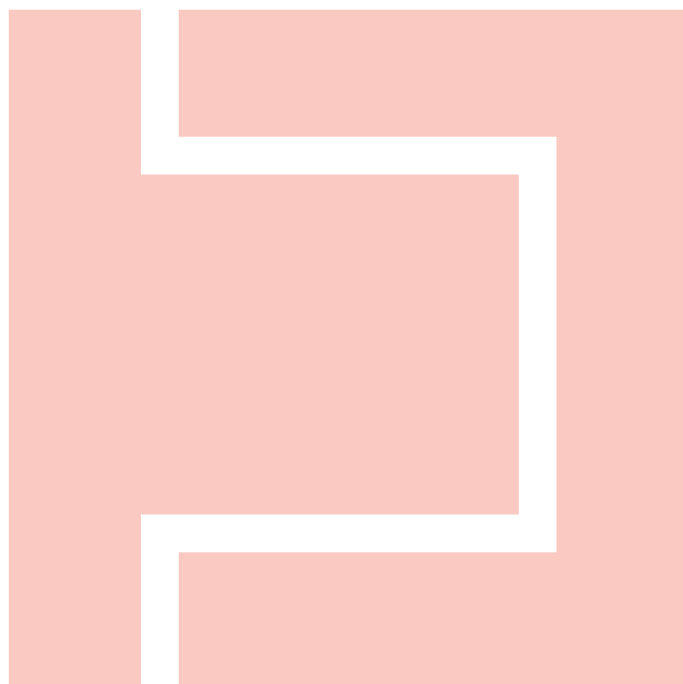
TELESKOPSCHIENEN
TELESCOPIC SLIDES



**BAUGRUPPENMONTAGE,
ENGINEERING**
**MOUNTING THE ASSEMBLY,
ENGINEERING**

**DREHTEILE,
ZEICHNUNGSTEILE**
**TURNING AND SPECIAL
DRAWING PARTS**





www.HA-CO.at