

HA-CO GmbH

Johann-Roithner-Str. 131

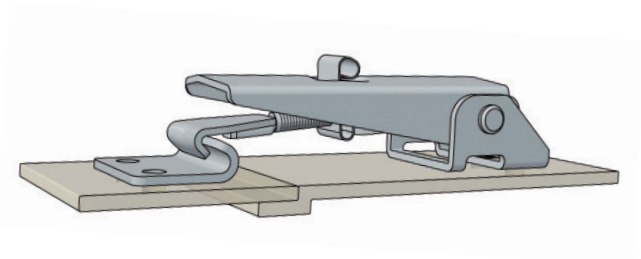
A-4050 Traun

Phone +43 7229 23844

info@ha-co.at

www.ha-co.at

Spannverschlüsse



Tension latches





Haudenschild Holding AG

HA-CO GmbH Technische Lösungen

Johann-Roithner-Straße 131
A-4050 Traun
Tel: +43 7229 23844
info@ha-co.at
www.ha-co.at

HW-TEC GmbH Lineartechnik vom Spezialisten

Lidwil 10
CH-8852 Altendorf
Tel: +41 55 216 10 50
hw@hw-tec.ch
www.hw-tec.ch

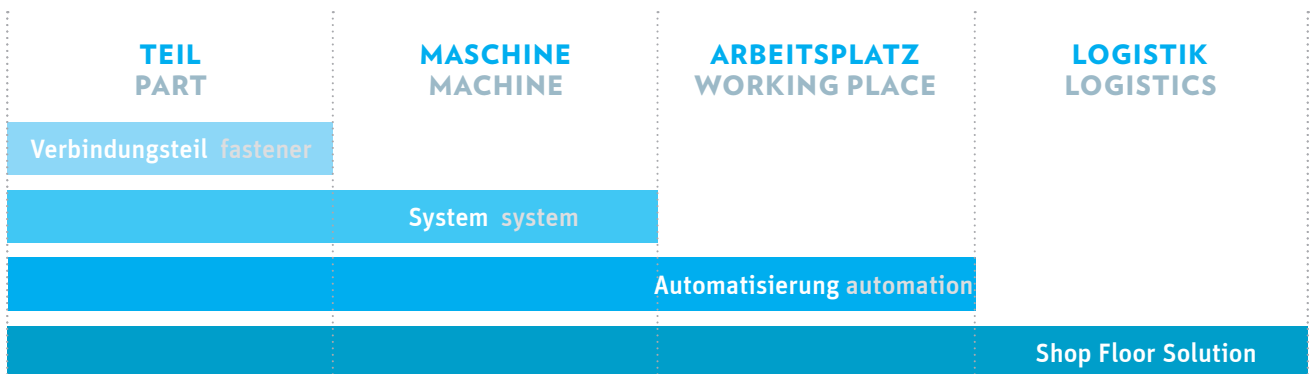
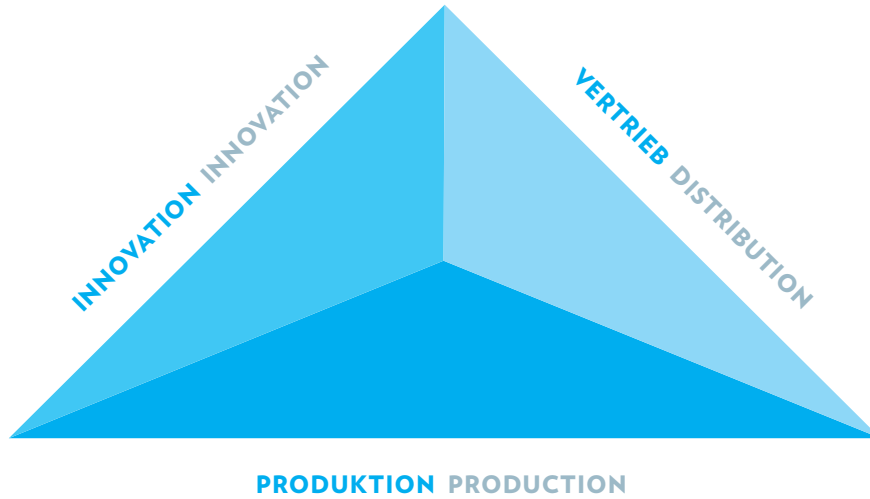
Haudenschild AG Kompetenz in Antriebstechnik

Lidwil 10
CH-8852 Altendorf
Tel: +41 55 225 40 50
haud@haudenschild.com
www.haudenschild.com

HA-CO GmbH Kupplungen und mehr

Daimlerring 10
D-63839 Kleinwallstadt
Tel: +49 602 265 58 10
info@ha-co.eu
www.ha-co.eu

Erfahrung die Ihnen zugute kommt
Zuverlässig und sicher
Nutzen Sie unsere Synergien zu Ihrem Vorteil
Experience for your benefit
Reliable and precise
Use our synergies for your advantage



INNOVATIVE TECHNOLOGY

Automotive Automotive	Kunststofftechnik Plastics
Bahn, Truck, Trailer Train, Truck, Trailer	Luftfahrt Aerospace
Elektronik Electronics	Hydraulik Hydraulics
Medizintechnik Medical technology	Holzverarbeitung Wood processing
Blechbearbeitung Metal processing	Maschinenbau Mechanical engineering

SPANNVERSCHLÜSSE TENSION LATCHES

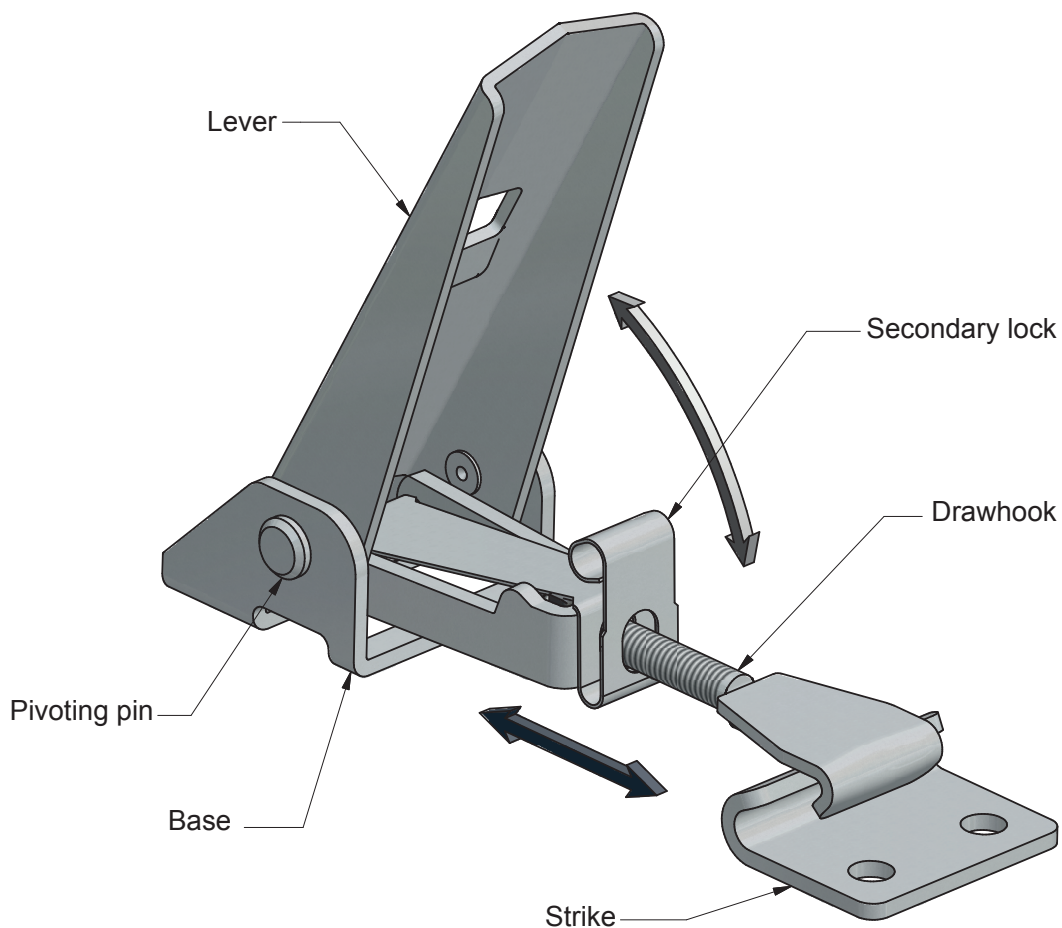
Informationen	Seite 3
Auswahltabelle	Seite 4
TL00 / TLL00 / TLS00	Seite 5
TL01 / TLL01	Seite 6
TL02	Seite 6
TL03 / TLL03 / TLS03	Seite 7
TL04 / TLL04	Seite 8
TL05	Seite 8
TL05.* / TLS05	Seite 9
TL06 / TLL06	Seite 10
TL07	Seite 10
TL08	Seite 11
TLL09	Seite 11
TL10	Seite 11
TL27	Seite 12
TL28 / TLL28	Seite 12
TL19.*	Seite 13
TL40	Seite 13
TLL40	Seite 14
TL42	Seite 14
TL43	Seite 14
TL44	Seite 15
TL45	Seite 15
TL26	Seite 15
TL14.* / TLS14.*	Seite 16
TL14.*	Seite 17
TL17 / TLS17	Seite 17
TLL17	Seite 18
TL18 / TLS18	Seite 18
TLL18 / TLZ18	Seite 19
TL46	Seite 19
TLS46 / TLL46	Seite 20
TL51	Seite 20
TLS51 / TLL51	Seite 21
TL52	Seite 21
TLS52 / TLL52	Seite 22
TLS605	Seite 22
TLS606	Seite 23
TL609	Seite 23
TL603	Seite 23
TLZ600 / TLZ601 / TLZ604	Seite 24

INFORMATIONEN INFORMATION

Tension latches are ideal for securing machine and equipment parts that must be opened or removed frequently. Many can be easily modified to suit special requirements, thereby eliminating the need for custom design.

A tension latch is normally made by a "base" (rivet or weld mounting), "lever" (standard, with secondary lock, with hasp to be used with padlock, with key-lock), a "drawhook" (adjustable -threaded-, fixed, spring-loaded) and a "pivoting pin". The drawhook, available in different sizes and shapes, engages with a "strike" (rivet or weld mounting); for some specific applications the tension latch can be engaged directly with the mating joint member, so no strike is needed.

The load needed to close the tension latch can be adjusted once installed by the threaded drawhook (only adjustable versions). In case of fixed drawhook attention must be paid during the installation since the load to apply differs accordingly to the position of the latch itself and the strike.



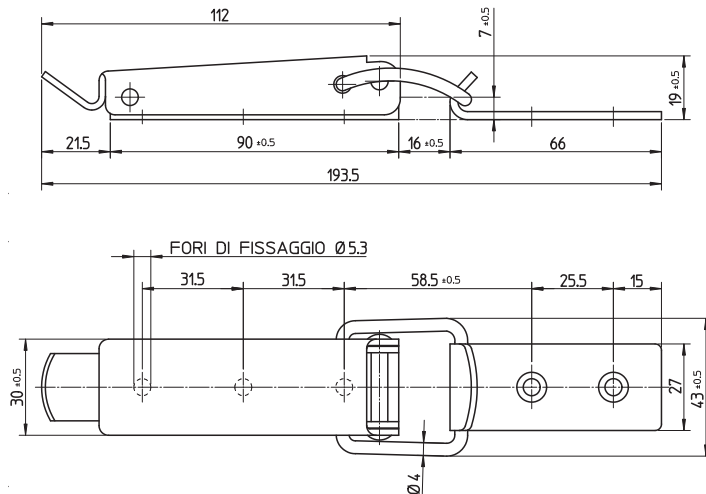
AUSWAHLTABELLE CONTENTS

Suitable for	Series	Max. working strenght	Page	Type					
				Without secondary lock	With secondary lock		Mounting		Adjustable
					Spring	Padlock	Welding	Screw Rivet	
Light load	TL44	150N	15						
	TL45	150N	15						
	TL07	300N	10						
	TL14.2	300N	16						
	TLS14.2	300N	16						
	TL14.3	300N	16						
	TLS14.3	300N	17						
	TL02	400N	6						
	TL27	400N	12						
	TL08	500N	11						
	TL42	500N	14						
	TL04	550N	8						
	TLL04	550N	8						
	TL43	550N	14						
	TL19	700N	13						
	TL46	750N	15						
	TL06	1000N	10						
	TL51/TL52	1000N	20/21						
	TLS51/TLS52	1000N	21/22						
	TLL51/TLL52	1000N	21/22						
TL05	1100N	8							
TLS05	1100N	9							
TL05.2	1100N	9							
TL05.4	1100N	9							
Medium load	TL01	1500N	6						
	TLL01	1500N	6						
	TL03.00	1500N	7						
	TLL03	1500N	7						
	TLS03	1500N	7						
	TLL06.01	1500N	10						
	TL10	1500N	11						
	TL28	1500N	12						
	TLL28	1500N	12						
	TL19.10	1500N	13						
	TL00	2000N	5						
	TLL00	2000N	5						
	TLS00	2000N	5						
	TLL09	2000N	11						
	TL40	2000N	13						
	TLL40	2000N	14						
	TL17	2700N	17						
	TLS17	2700N	17						
	TLL17	2700N	18						
	Heavy load	TL18	4200N	18					
TLS18		4200N	18						
TLL18		4200N	19						
TLZ18		4200N	19		(key-lock)				
TL46		4200N	19						
TLS46		4200N	20						
TLL46	4200N	17							

TL00 / TLL00 / TLS00

TL00 - Latch

Max. working strenght 2000N



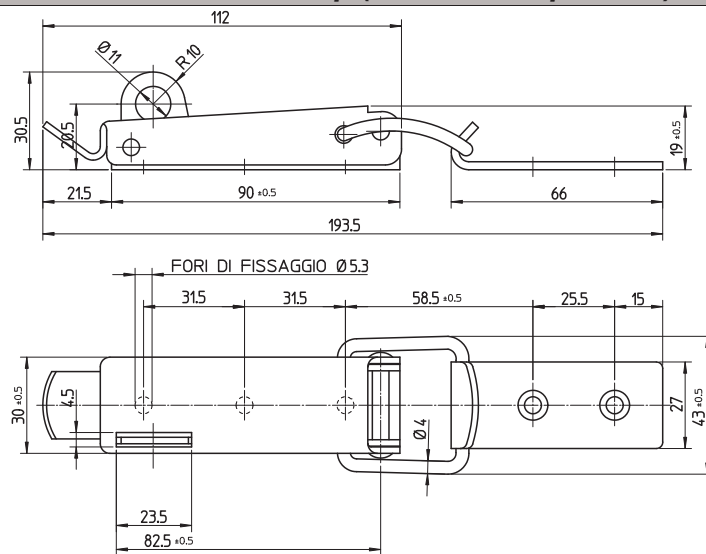
Latch	Strike	Ø holes
TL00.1*	PG00.1*	5,3

Material and Finishing	Code
Steel, unfinished	AR
Steel, nickel plated	NC
Steel, zinc plated Cr6 free	AA
Stainless steel	BP

Insert Material/Finishing code * into Latch/Strike Part No.

TLL00 - Latch with hasp (for use with padlock)

Max. working strenght 2000N



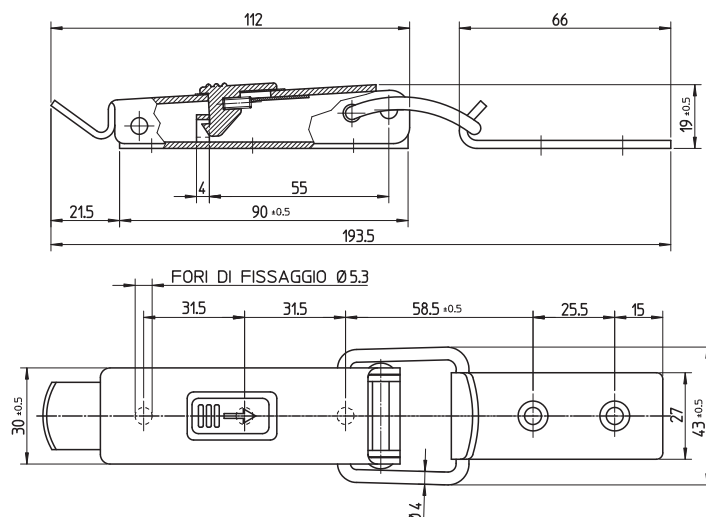
Latch	Strike	Ø holes
TLL00.1*	PG00.1*	5,3

Material and Finishing	Code
Steel, unfinished	AR
Steel, nickel plated	NC
Steel, zinc plated Cr6 free	AA
Stainless steel	BP

Insert Material/Finishing code * into Latch/Strike Part No.

TLS00 - Latch with secondary lock

Max. working strenght 2000N



Latch	Strike	Ø holes
TLS00.1*	PG00.1*	5,3

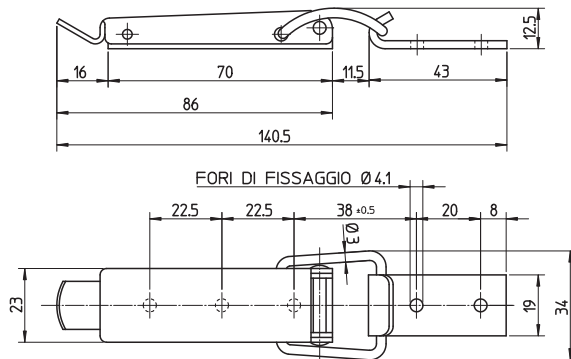
Material and Finishing	Code
Steel, nickel plated	NC

Insert Material/Finishing code * into Latch/Strike Part No.

TL01 / TLL01 / TL02

TL01 - Latch

Max. working strenght 1500N



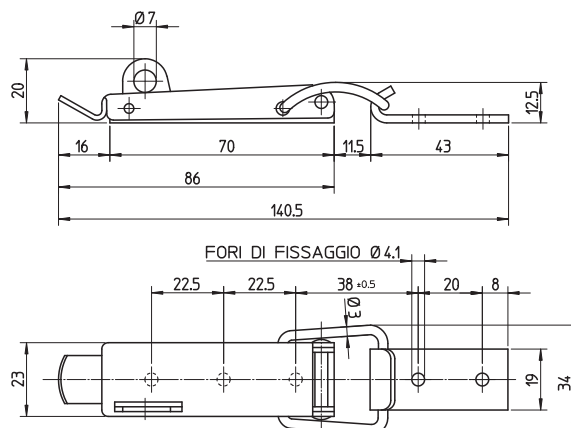
Latch	Strike	Ø holes
TL01.1*	PG01.1*	4,1

Material and Finishing	Code
Steel, unfinished	AR
Steel, nickel plated	NC
Steel, zinc plated Cr6 free	AA
Stainless steel	BP

Insert Material/Finishing code * into Latch/Strike Part No.

TLL01 - Latch with hasp (for use with padlock)

Max. working strenght 1500N



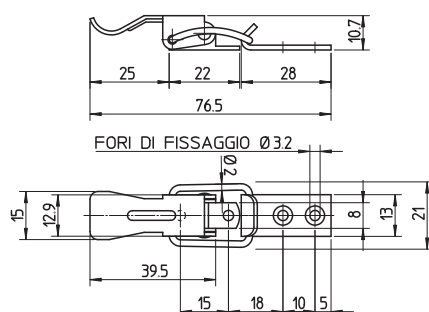
Latch	Strike	Ø holes
TLL01.1*	PG01.1*	4,1

Material and Finishing	Code
Steel, unfinished	AR
Steel, nickel plated	NC
Steel, zinc plated Cr6 free	AA
Stainless steel	BP

Insert Material/Finishing code * into Latch/Strike Part No.

TL02 - Latch

Max. working strenght 400N



Latch	Strike	Ø holes
TL02.1*	PG02.1*	3,2

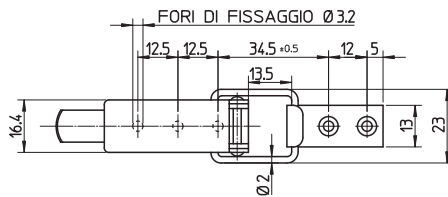
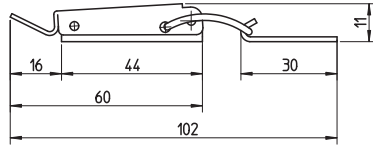
Material and Finishing	Code
Steel, unfinished	AR
Steel, nickel plated	NC
Steel, zinc plated Cr6 free	AA
Stainless steel	BP

Insert Material/Finishing code * into Latch/Strike Part No.

TL03 / TLL03 / TLS03

TL03 - Latch

Max. working strenght 1500N



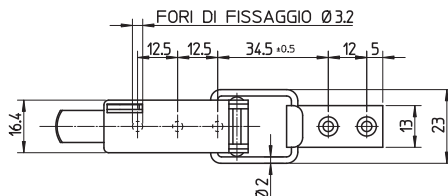
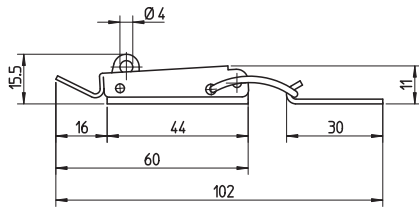
Latch	Strike	Ø holes
TL03.1*	PG03.1*	3,2

Material and Finishing	Code
Steel, unfinished	AR
Steel, nickel plated	NC
Steel, zinc plated Cr6 free	AA
Stainless steel	BP

Insert Material/Finishing code * into Latch/Strike Part No.

TLL03 - Latch with hasp (for use with padlock)

Max. working strenght 1500N



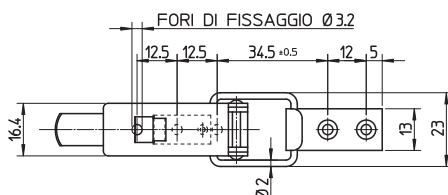
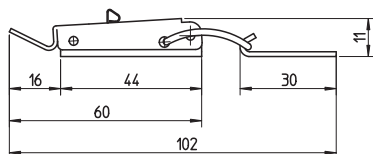
Latch	Strike	Ø holes
TLL03.1*	PG03.1*	3,2

Material and Finishing	Code
Steel, unfinished	AR
Steel, nickel plated	NC
Steel, zinc plated Cr6 free	AA
Stainless steel	BP

Insert Material/Finishing code * into Latch/Strike Part No.

TLS03 - Latch with secondary lock

Max. working strenght 1500N



Latch	Strike	Ø holes
TLS03.1*	PG03.1*	3,2

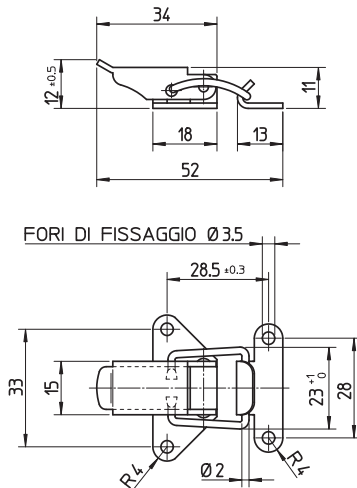
Material and Finishing	Code
Steel, zinc plated Cr6 free	AA
Stainless steel	BP

Insert Material/Finishing code * into Latch/Strike Part No.

TL04 / TLL04 / TL05

TL04 - Latch

Max. working strenght 550N



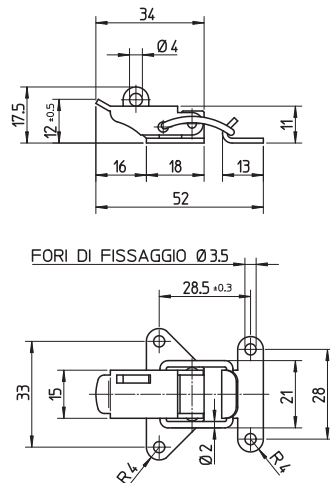
Latch	Strike	Ø holes
TL04.1*	PG04.1*	3,5

Material and Finishing	Code
Steel, unfinished	AR
Steel, nickel plated	NC
Steel, zinc plated Cr6 free	AA
Stainless steel	BP

Insert Material/Finishing code * into Latch/Strike Part No.

TLL04 - Latch with hasp (for use with padlock)

Max. working strenght 550N



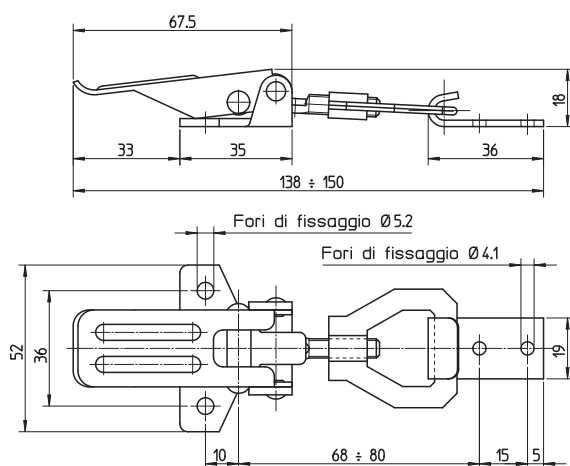
Latch	Strike	Ø holes
TLL04.1*	PG04.1*	3,2

Material and Finishing	Code
Steel, unfinished	AR
Steel, nickel plated	NC
Steel, zinc plated Cr6 free	AA

Insert Material/Finishing code * into Latch/Strike Part No.

TL05 - Latch adjustable

Max. working strenght 1100N



Latch	Strike	Ø holes
TL05.1*	PG05.1*	5,2

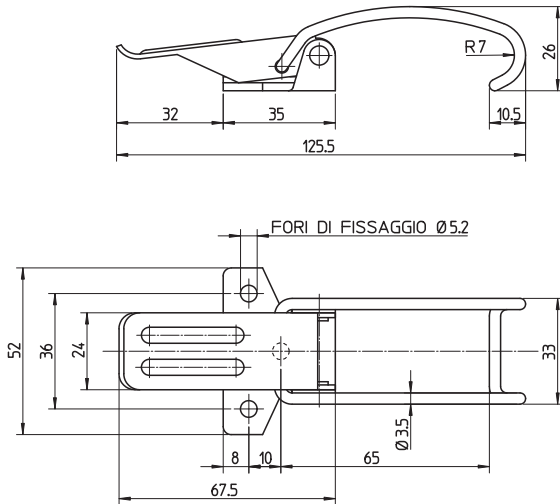
Material and Finishing	Code
Steel, unfinished	AR
Steel, nickel plated	NC
Steel, zinc plated Cr6 free	AA
Stainless steel	BP

Insert Material/Finishing code * into Latch/Strike Part No.

TL05.* / TLS05

TL05.2 Latch

Max. working strenght 1500N



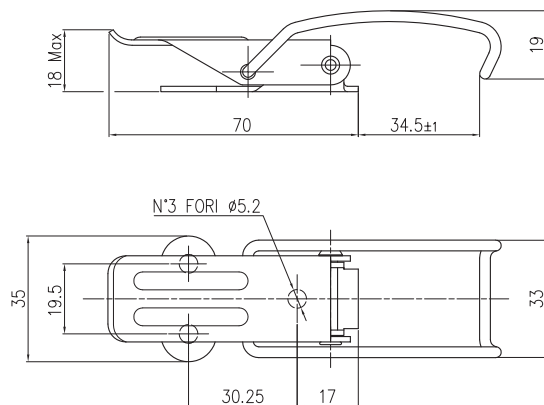
Latch	Strike	Ø holes
TL05.2*	not required	5,2

Material and Finishing	Code
Steel, zinc plated Cr6 free	AA

Insert Material/Finishing code * into Latch Part No.

TL05.4 - Latch

Max. working strenght 1500N



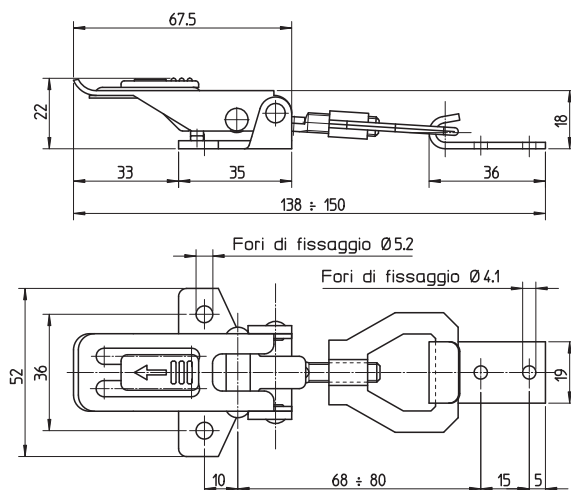
Latch	Strike	Ø holes
TL05.4*	not required	5,2

Material and Finishing	Code
Stainless steel	BP

Insert Material/Finishing code * into Latch Part No.

TLS05 - Latch with secondary lock

Max. working strenght 1500N



Latch	Strike	Ø holes
TLS05.1*	PG05.1*	5,2

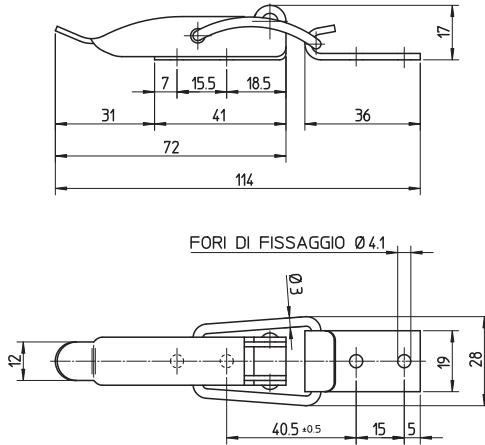
Material and Finishing	Code
Steel, nickel plated	NC
Stainless steel	BP

Insert Material/Finishing code * into Latch/Strike Part No.

TL06 / TLL06 / TL07

TL06 - Latch

Max. working strenght 1000N



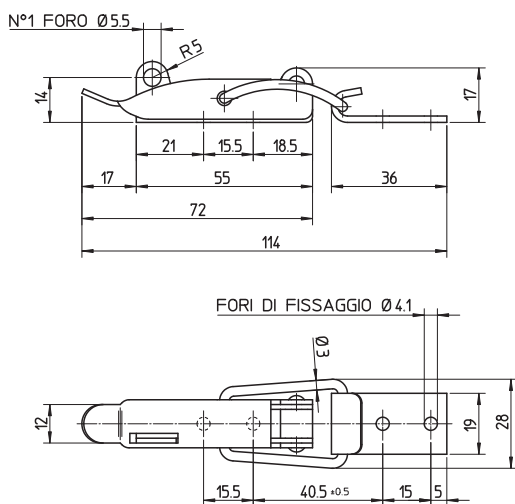
Latch	Strike	Ø holes
TL06.1*	PG05.1*	4,1

Material and Finishing	Code
Steel, unfinished	AR
Steel, nickel plated	NC
Steel, zinc plated Cr6 free	AA
Stainless steel	BP

Insert Material/Finishing code * into Latch/Strike Part No.

TLL06 - Latch with hasp (for use with padlock)

Max. working strenght 1500N



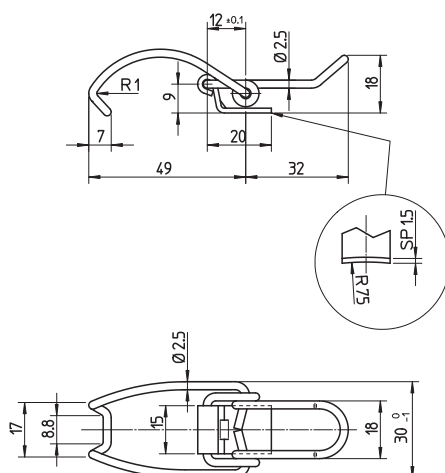
Latch	Strike	Ø holes
TLL06.1*	PG05.1*	4,1

Material and Finishing	Code
Steel, unfinished	AR
Steel, nickel plated	NC
Steel, zinc plated Cr6 free	AA
Stainless steel	BP

Insert Material/Finishing code * into Latch/Strike Part No.

TL07 - Latch

Max. working strenght 300N



Latch	Strike	Ø holes
TL07.1*	not required	3,2

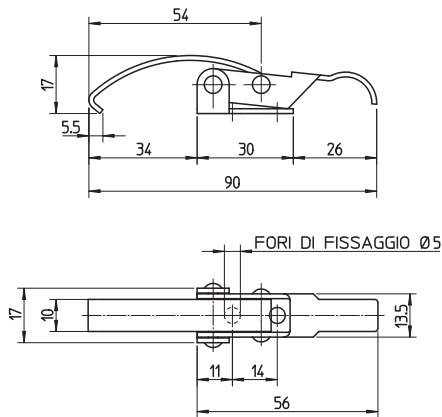
Material and Finishing	Code
Steel, zinc plated Cr6 free	AA

Insert Material/Finishing code * into Latch Part No.

TL08 / TLL09 / TL10

TL08 - Latch

Max. working strenght 500N



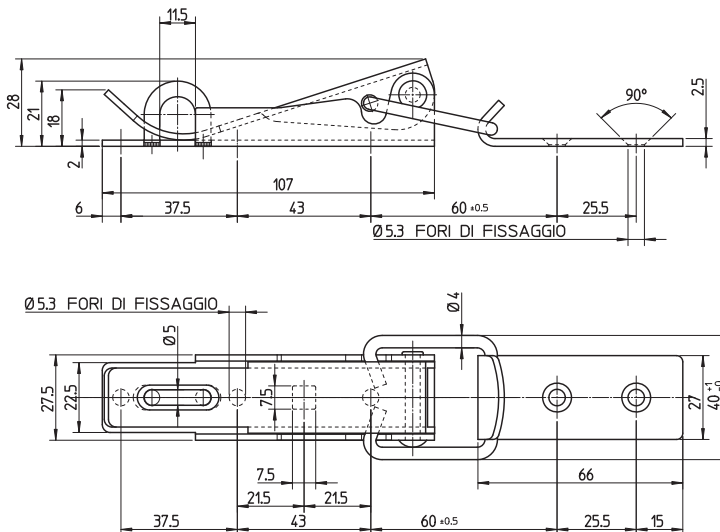
Latch	Strike	Ø holes
TL08.1*	not required	5,0

Material and Finishing	Code
Steel, unfinished	AR
Steel, nickel plated	NC
Steel, zinc plated Cr6 free	AA
Stainless steel	BP

Insert Material/Finishing code * into Latch Part No.

TLL09 - Latch with hasp (for use with padlock)

Max. working strenght 2000N



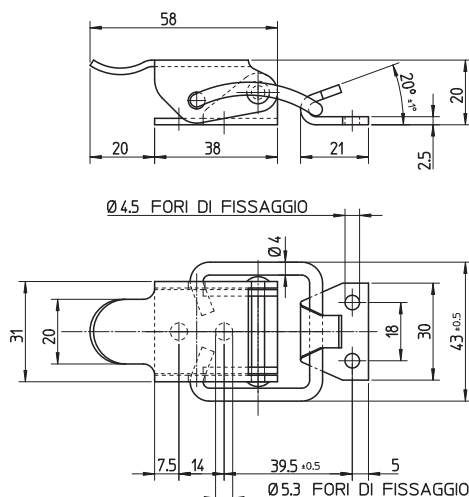
Latch	Strike	Ø holes
TLL09.1*	PG00.1*	5,3

Material and Finishing	Code
Steel, zinc plated Cr6 free	AA

Insert Material/Finishing code * into Latch/Strike Part No.

TL10 - Latch

Max. working strenght 1500N



Latch	Strike	Ø holes
TL10.1*	PG52.1*	5,3

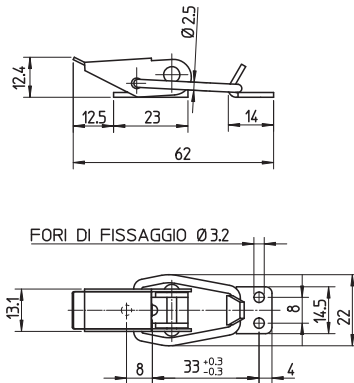
Material and Finishing	Code
Steel, zinc plated Cr6 free	AA

Insert Material/Finishing code * into Latch/Strike Part No.

TL27 / TL28 / TLL28

TL27 - Latch

Max. working strenght 400N



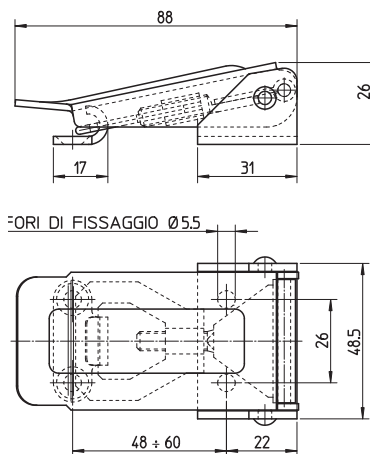
Latch	Strike	\varnothing holes
TL27.1*	PG27.1*	3,2

Material and Finishing	Code
Steel, zinc plated Cr6 free	AA

Insert Material/Finishing code * into Latch/Strike Part No.

TL28 - Latch adjustable

Max. working strenght 1500N



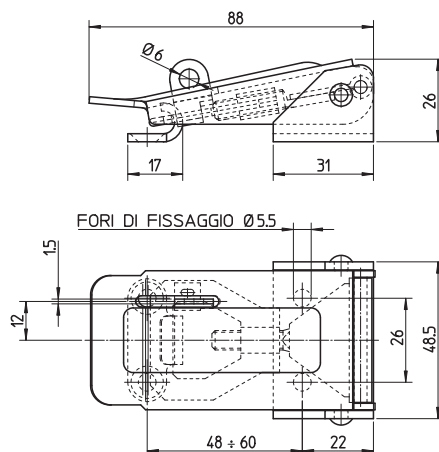
Latch	Strike	\varnothing holes
TL28.1*	PG28.1*	5,5

Material and Finishing	Code
Steel, zinc plated Cr6 free	AA
Stainless steel	BP

Insert Material/Finishing code * into Latch/Strike Part No.

TLL28 - Latch adjustable with hasp

Max. working strenght 1500N



Latch	Strike	\varnothing holes
TLL28.1*	PG28.1*	5,2

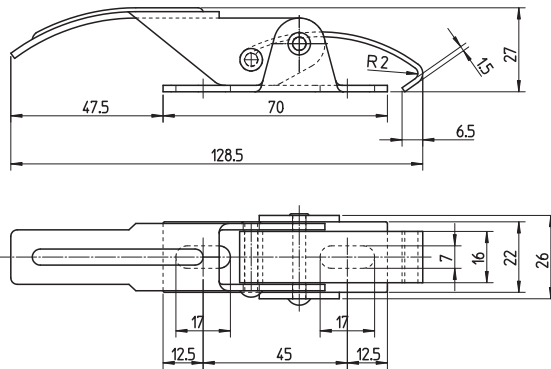
Material and Finishing	Code
Steel, zinc plated Cr6 free	AA

Insert Material/Finishing code * into Latch/Strike Part No.

TL19.* / TL40

TL19 - Latch

Max. working strenght 700N



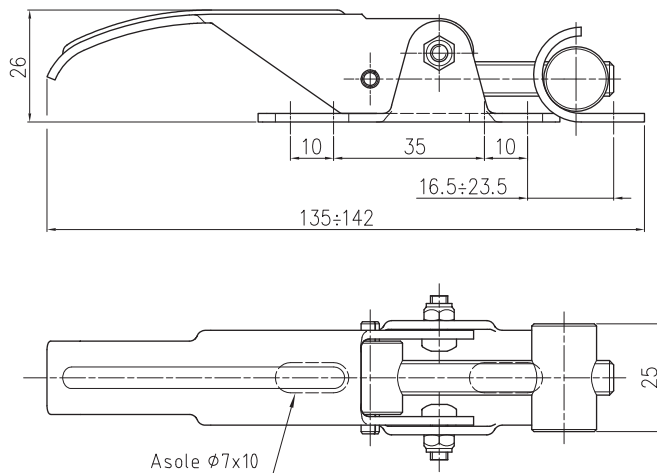
Latch	Strike	Ø holes
TL19.1*	not required	7,0

Material and Finishing	Code
Steel, zinc plated Cr6 free	AA

Insert Material/Finishing code * into Latch Part No.

TL19.10 - Latch adjustable

Max. working strenght 1500N



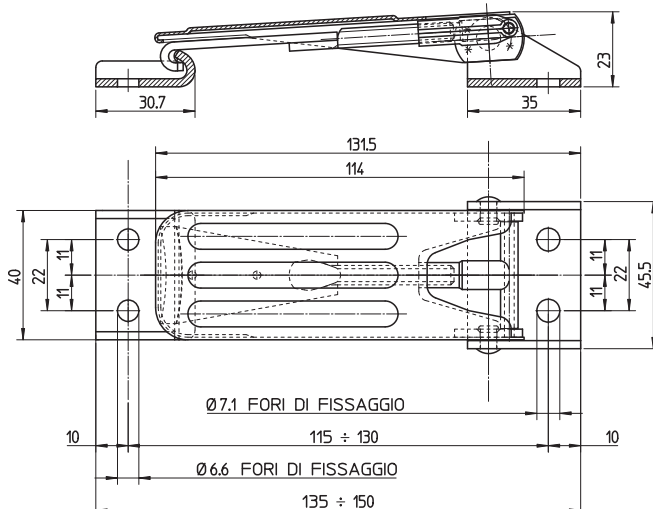
Latch	Strike	Ø holes
TL19.10*	PG19.10*	7,0

Material and Finishing	Code
Steel, zinc plated Cr6 free	AA

Insert Material/Finishing code * into Latch/Strike Part No.

TL40 - Latch adjustable

Max. working strenght 2000N



Latch	Strike	Ø holes
TL40.1*	PG40.1*	7,1

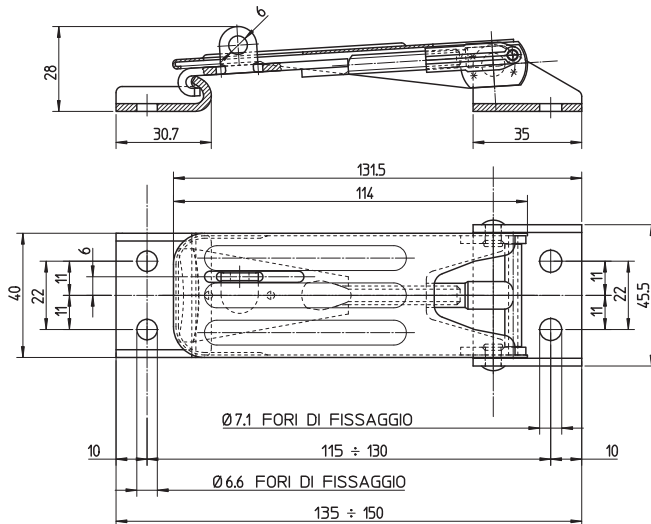
Material and Finishing	Code
Steel, zinc plated Cr6 free	AA

Insert Material/Finishing code * into Latch/Strike Part No.

TLL40 / TL42 / TL43

TLL40 - Latch adjustable with hasp

Max. working strenght 2000N



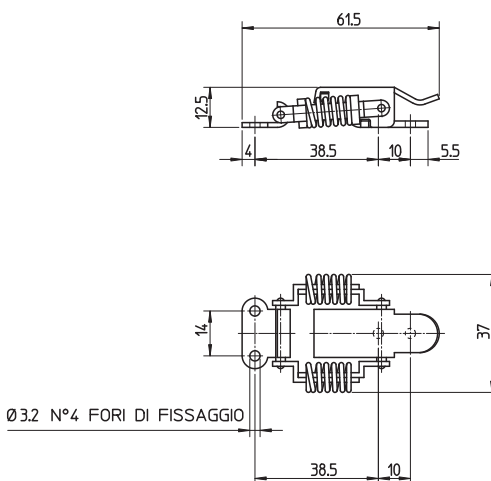
Latch	Strike	Ø holes
TLL40.1*	PG40.1*	7,1

Material and Finishing	Code
Steel, zinc plated Cr6 free	AA

Insert Material/Finishing code * into Latch/Strike Part No.

TL42 - Latch pre-loaded

Max. working strenght 500N



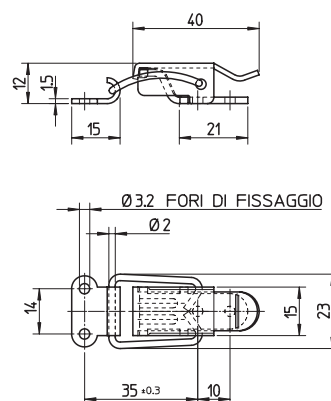
Latch	Strike	Ø holes
TL42.1*	PG42.1*	3,2

Material and Finishing	Code
Steel, zinc plated Cr6 free	AA
Stainless steel	BP

Insert Material/Finishing code * into Latch/Strike Part No.

TL43 - Latch

Max. working strenght 550N



Latch	Strike	Ø holes
TL43.1*	PG42.1*	3,2

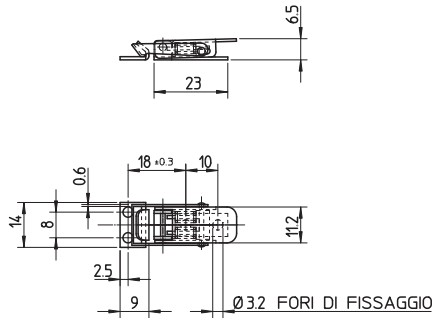
Material and Finishing	Code
Steel, zinc plated Cr6 free	AA
Stainless steel	BP

Insert Material/Finishing code * into Latch/Strike Part No.

TL44 / TL45 / TL26

TL44 - Latch pre-loaded

Max. working strenght 150N



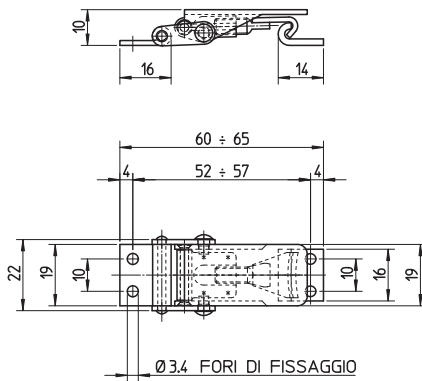
Latch	Strike	Ø holes
TL44.1*	PG44.1*	3,2

Material and Finishing	Code
Steel, zinc plated Cr6 free	AA

Insert Material/Finishing code * into Latch/Strike Part No.

TL45 - Latch

Max. working strenght 150N



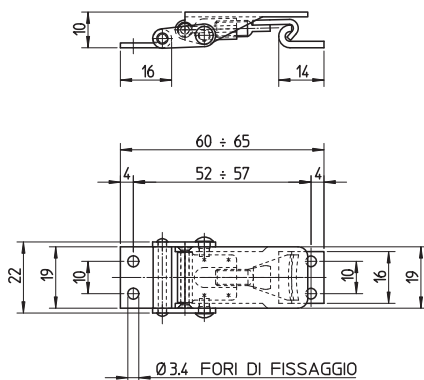
Latch	Strike	Ø holes
TL45.1*	PG44.1*	3,2

Material and Finishing	Code
Steel, zinc plated Cr6 free	AA

Insert Material/Finishing code * into Latch/Strike Part No.

TL26 - Latch adjustable

Max. working strenght 750N



Latch	Strike	Ø holes
TL26.1*	PG26.1*	3,4

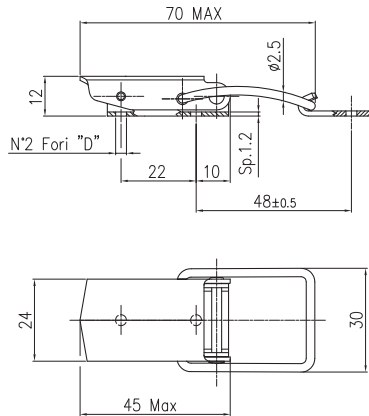
Material and Finishing	Code
Steel, zinc plated Cr6 free	AA

Insert Material/Finishing code * into Latch/Strike Part No.

TL14.* / TLS14.*

TL14.2 - Latch

Max. working strenght 300N



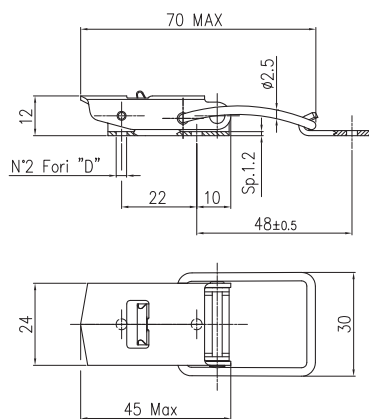
Latch	Strike	Ø holes
TL14.2*	PG14.1*	3,1
TL14.20*	PG14.1*	4,0
TL14.25*	PG14.1*	3,5

Material and Finishing	Code
Steel, zinc plated Cr6 free	AA
Stainless steel	BP

Insert Material/Finishing code * into Latch/Strike Part No.

TLS14.2 - Latch with secondary lock

Max. working strenght 300N



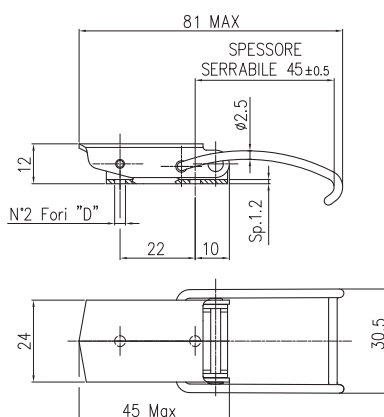
Latch	Strike	Ø holes
TLS14.2*	PG14.1*	3,1
TLS14.20*	PG14.1*	4,0
TLS14.25*	PG14.1*	3,5

Material and Finishing	Code
Steel, zinc plated Cr6 free	AA
Stainless steel	BP

Insert Material/Finishing code * into Latch/Strike Part No.

TL14.3 - Latch

Max. working strenght 300N



Latch	Strike	Ø holes
TL14.3*	not required	3,1
TL14.30*	not required	4,0
TL14.35*	not required	3,5

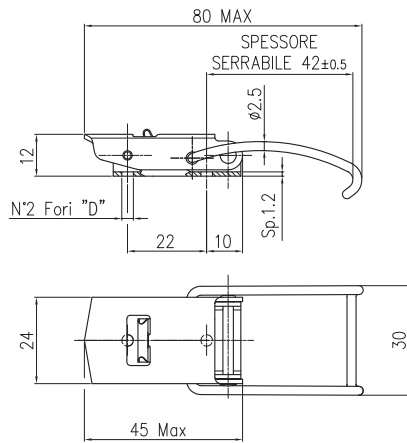
Material and Finishing	Code
Steel, zinc plated Cr6 free	AA
Stainless steel	BP

Insert Material/Finishing code * into Latch Part No.

TLS14.* / TL17 / TLS17

TLS14.3 - Latch with secondary lock

Max. working strenght 300N



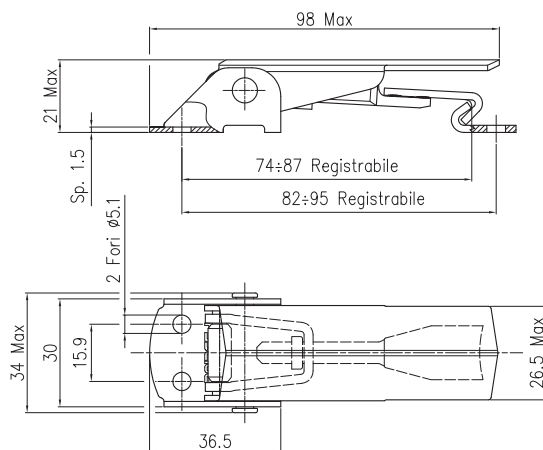
Latch	Strike	Ø holes
TLS14.3*	not required	3,1
TLS14.30*	not required	4,0
TLS14.35*	not required	3,5

Material and Finishing	Code
Steel, zinc plated Cr6 free	AA
Stainless steel	BP

Insert Material/Finishing code * into Latch Part No.

TL17 - Latch adjustable

Max. working strenght 2700N



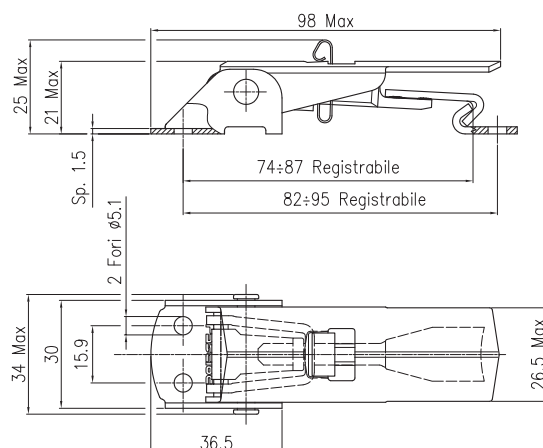
Latch	Strike	Ø holes
TL17.1*	PG17.1*	5,1

Material and Finishing	Code
Steel, zinc plated Cr6 free	AA
Stainless steel	BP

Insert Material/Finishing code * into Latch/Strike Part No.

TLS17 - Latch adjustable with secondary lock

Max. working strenght 2700N



Latch	Strike	Ø holes
TLS17.1*	PG17.1*	5,1

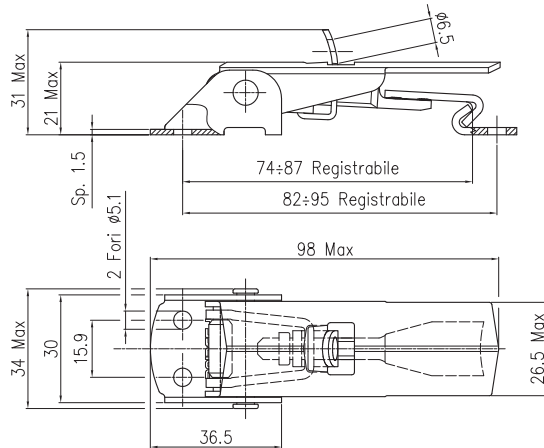
Material and Finishing	Code
Steel, zinc plated Cr6 free	AA
Stainless steel	BP

Insert Material/Finishing code * into Latch/Strike Part No.

TLL17 / TL18 / TLS18

TLL17 - Latch adjustable with hasp

Max. working strenght 2700N



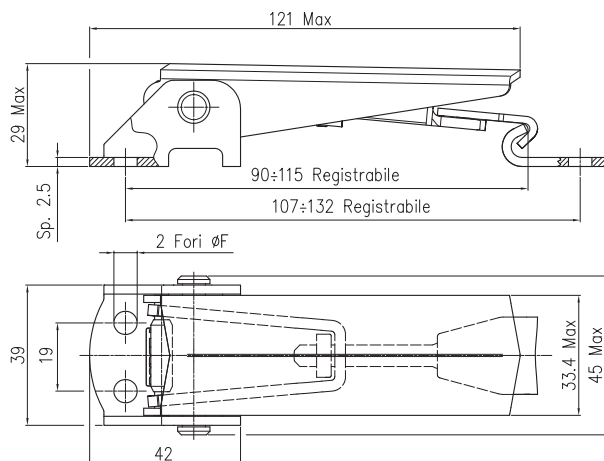
Latch	Strike	Ø holes
TLL17.1*	PG17.1*	5,1

Material and Finishing	Code
Steel, zinc plated Cr6 free	AA
Stainless steel	BP

Insert Material/Finishing code * into Latch/Strike Part No.

TL18 - Latch adjustable

Max. working strenght 4200N



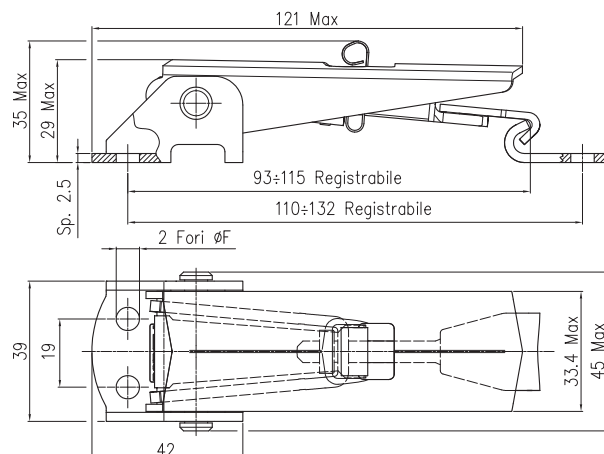
Latch	Strike	Ø holes
TL18.1*	PG18.1*	5,1
TL18.5*	PG18.5*	6,5

Material and Finishing	Code
Steel, zinc plated Cr6 free	AA
Stainless steel	BP

Insert Material/Finishing code * into Latch/Strike Part No.

TLS18 - Latch adjustable with secondary lock

Max. working strenght 4200N



Latch	Strike	Ø holes
TLS18.1*	PG18.1*	5,1
TLS18.5*	PG18.5*	6,5

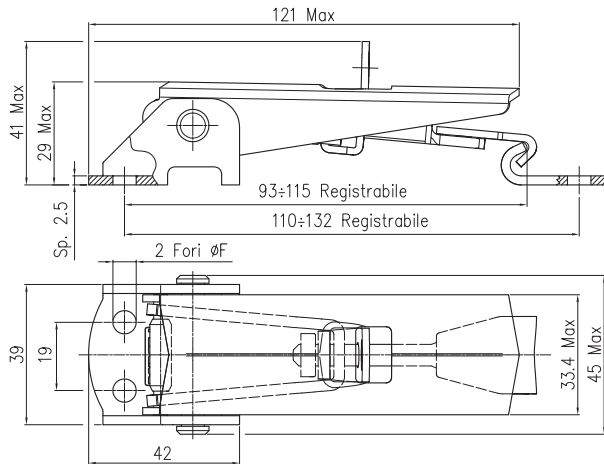
Material and Finishing	Code
Steel, zinc plated Cr6 free	AA
Stainless steel	BP

Insert Material/Finishing code * into Latch/Strike Part No.

TLL18 / TLZ18 / TL46

TLL18 - Latch adjustable with hasp

Max. working strenght 4200N



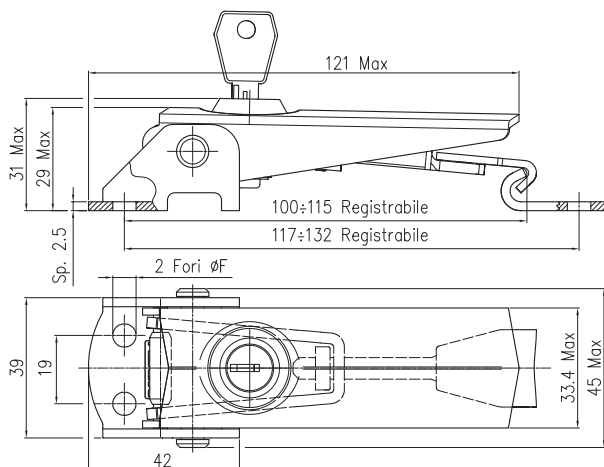
Latch	Strike	Ø holes
TLL18.1*	PG18.1*	5,1
TLL18.5*	PG18.5*	6,5

Material and Finishing	Code
Steel, zinc plated Cr6 free	AA
Stainless steel	BP

Insert Material/Finishing code * into Latch/Strike Part No.

TLZ18 - Latch adjustable with key-lock

Max. working strenght 4200N



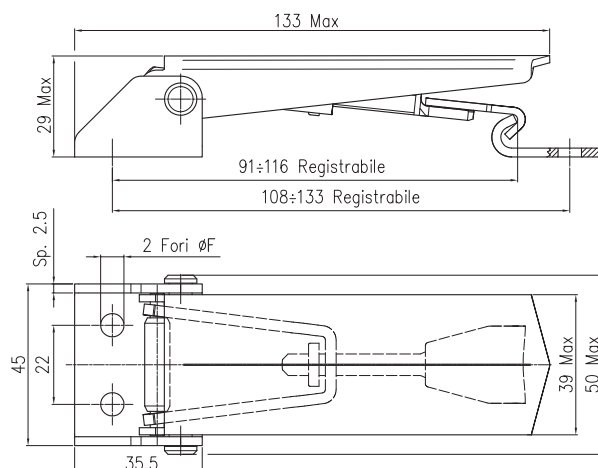
Latch	Strike	Ø holes
TLZ18.1*	PG18.1*	5,1
TLZ18.5*	PG18.5*	6,5

Material and Finishing	Code
Steel, zinc plated Cr6 free	AA

Insert Material/Finishing code * into Latch/Strike Part No.

TL46 - Latch

Max. working strenght 4200N



Latch	Strike	Ø holes
TL46.1*	PG18.1*	6,5
TL46.50*	PG18.5*	9,0

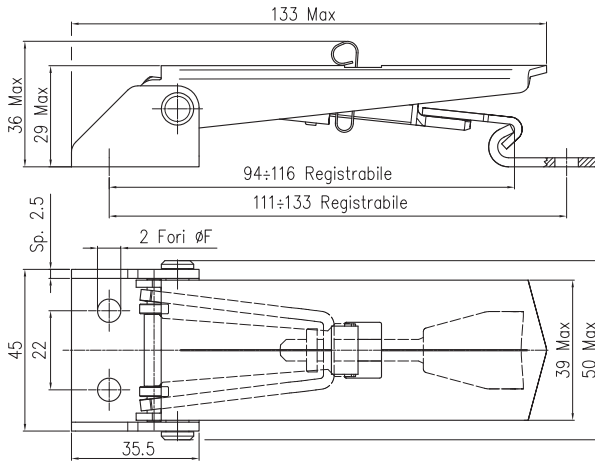
Material and Finishing	Code
Steel, zinc plated Cr6 free	AA
Stainless steel	BP

Insert Material/Finishing code * into Latch/Strike Part No.

TLS46 / TLL46 / TL51

TLS46 - Latch adjustable with secondary lock

Max. working strenght 4200N



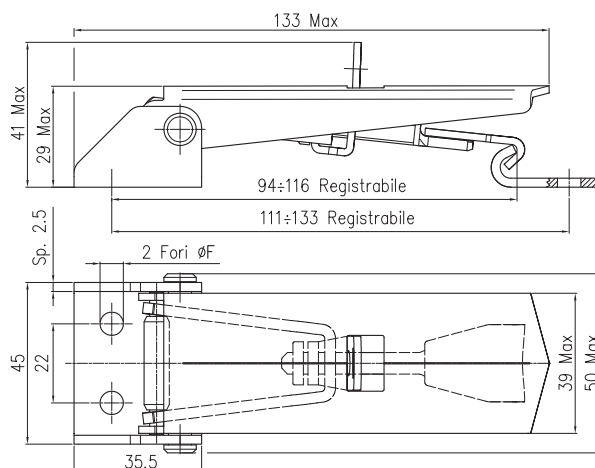
Latch	Strike	Ø holes
TLS46.1*	PG18.1*	6,5
TLS46.50*	PG18.5*	9,0

Material and Finishing	Code
Steel, zinc plated Cr6 free	AA
Stainless steel	BP

Insert Material/Finishing code * into Latch/Strike Part No.

TLL46 - Latch adjustable with hasp

Max. working strenght 4200N



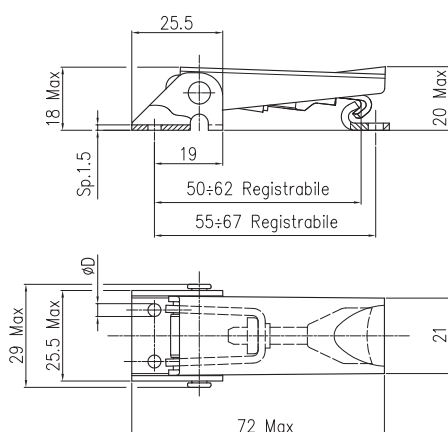
Latch	Strike	Ø holes
TLL46.1*	PG18.1*	6,5
TLL46.50*	PG18.5*	9,0

Material and Finishing	Code
Steel, zinc plated Cr6 free	AA
Stainless steel	BP

Insert Material/Finishing code * into Latch/Strike Part No.

TL51 - Latch adjustable

Max. working strenght 1000N



Latch	Strike	Ø holes
TL51.1*	PG51.1*	3,6
TL51.2*	PG51.2*	welding
TL51.5*	PG51.5*	4,2

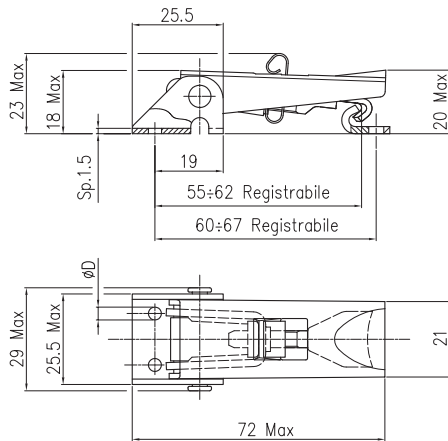
Material and Finishing	Code
Steel, zinc plated Cr6 free	AZ
Stainless steel	BP

Insert Material/Finishing code * into Latch/Strike Part No.

TLS51 / TLL51 / TL52

TLS51 - Latch adjustable with secondary lock

Max. working strenght 1000N



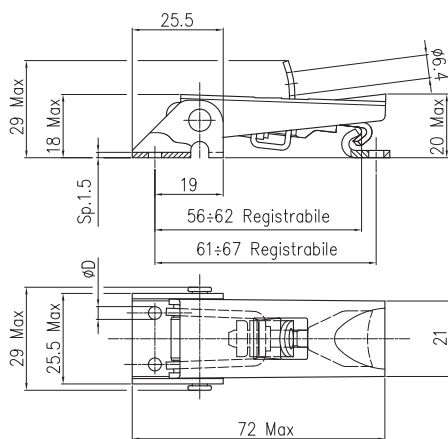
Latch	Strike	Ø holes
TLS51.1*	PG51.1*	3,6
TLS51.2*	PG51.2*	welding
TLS51.5*	PG51.5*	4,2

Material and Finishing	Code
Steel, zinc plated Cr6 free	AZ
Stainless steel	BP

Insert Material/Finishing code * into Latch/Strike Part No.

TLL51 - Latch adjustable with hasp

Max. working strenght 1000N



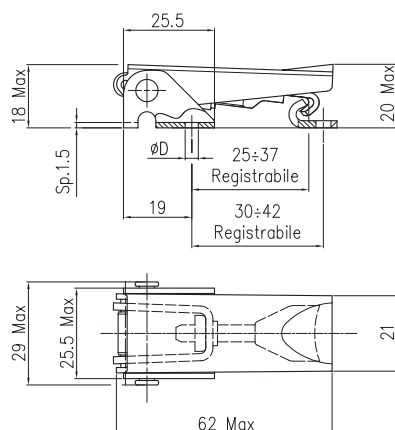
Latch	Strike	Ø holes
TLL51.1*	PG51.1*	3,6
TLL51.2*	PG51.2*	welding
TLL51.5*	PG51.5*	4,2

Material and Finishing	Code
Steel, zinc plated Cr6 free	AZ
Stainless steel	BP

Insert Material/Finishing code * into Latch/Strike Part No.

TL52 - Latch adjustable

Max. working strenght 1000N



Latch	Strike	Ø holes
TL52.1*	PG51.1*	3,6
TL52.2*	PG51.2*	welding
TL52.5*	PG51.5*	4,2

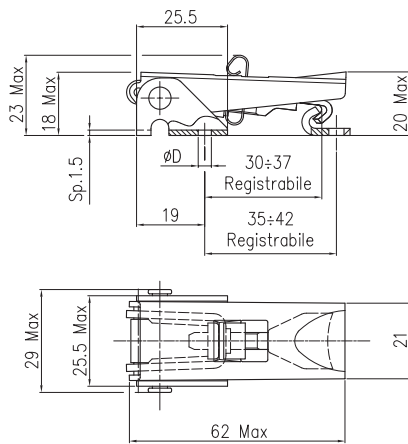
Material and Finishing	Code
Steel, zinc plated Cr6 free	AZ
Stainless steel	BP

Insert Material/Finishing code * into Latch/Strike Part No.

TLS52 / TLL52 / TLS605

TLS52 - Latch adjustable with secondary lock

Max. working strenght 1000N



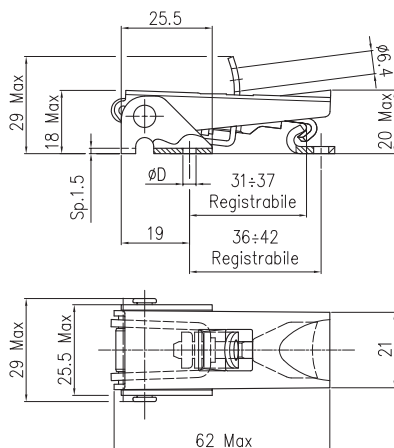
Latch	Strike	Ø holes
TLS52.1*	PG51.1*	3,6
TLS52.2*	PG51.2*	welding
TLS52.5*	PG51.5*	4,2

Material and Finishing	Code
Steel, zinc plated Cr6 free	AZ
Stainless steel	BP

Insert Material/Finishing code * into Latch/Strike Part No.

TLL52 - Latch adjustable with hasp

Max. working strenght 1000N

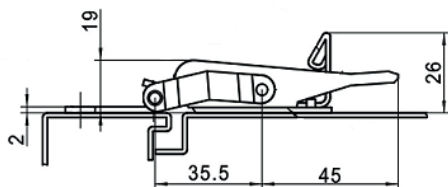


Latch	Strike	Ø holes
TLL52.1*	PG51.1*	3,6
TLL52.2*	PG51.2*	welding
TLL52.5*	PG51.5*	4,2

Material and Finishing	Code
Steel, zinc plated Cr6 free	AZ
Stainless steel	BP

Insert Material/Finishing code * into Latch/Strike Part No.

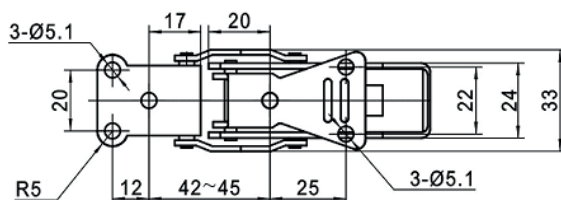
TLS605 - Latch pre-loaded with secondary lock



Latch	Strike	Ø holes
TLS605.1*	PG605.1*	5,1

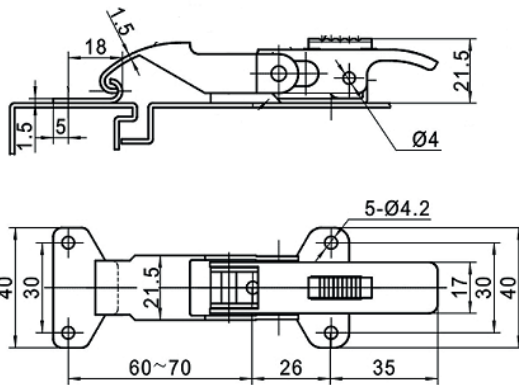
Material and Finishing	Code
Stainless steel	BP

Insert Material/Finishing code * into Latch/Strike Part No.



TLS606 / TL609 / TL603

TLS606 - Latch adjustable pre-load with secondary lock

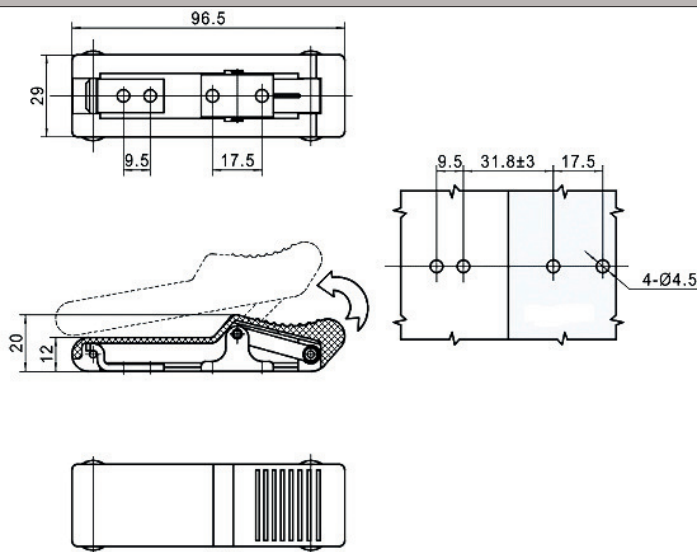


Latch	Strike	Ø holes
TLS606.1*	PG606.1*	4,2

Material and Finishing	Code
Steel, zinc plated Cr6 free	AZ

Insert Material/Finishing code * into Latch/Strike Part No.

TL609 - Latch

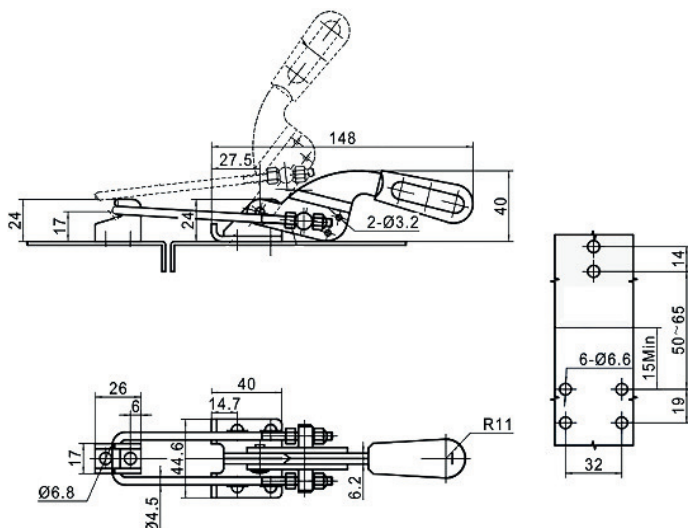


Latch	Strike	Ø holes
TL609.1*	PG609.1*	4,5

Material and Finishing	Code
Rubber body, base and strike Aisi 304	PN

Insert Material/Finishing code * into Latch/Strike Part No.

TL603 - Latch



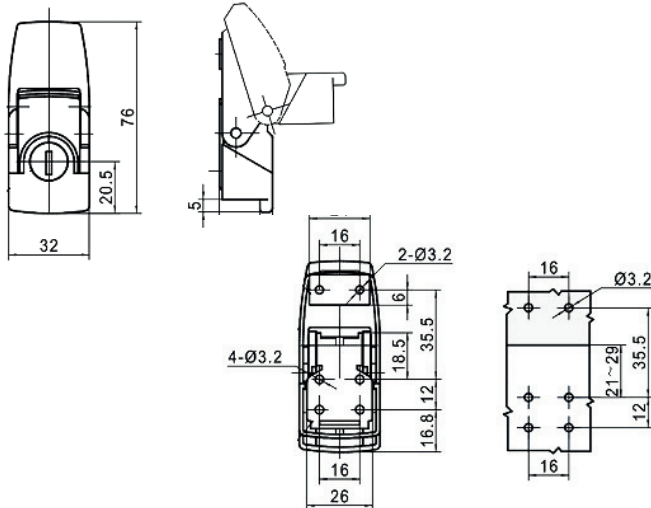
Latch	Strike	Ø holes
TL603.1*	PG603.1*	6,6

Material and Finishing	Code
Stainless steel	BP

Insert Material/Finishing code * into Latch/Strike Part No.

TLZ600 / TLZ601 / TLZ604

TLZ600 - Latch with key-lock

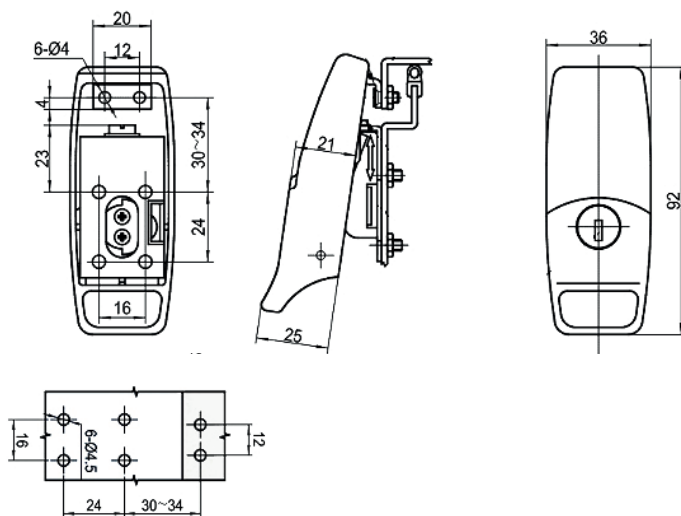


Latch	Strike	Ø holes
TLZ600.1*	PG600.1*	3,2
TL600.1* (without lock)	PG600.1*	3,2

Material and Finishing	Code
Zinc alloy body bright chrome plated, base and strike stainless steel	AC

Insert Material/Finishing code * into Latch/Strike Part No.

TLZ601 - Latch with key-lock

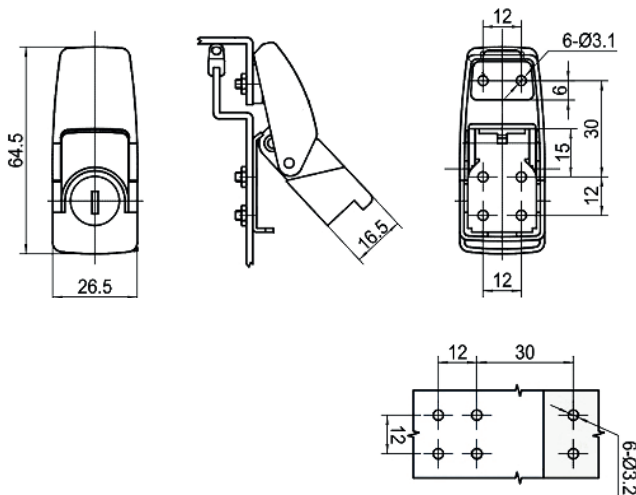


Latch	Strike	Ø holes
TLZ601.1*	PG601.1*	4,5

Material and Finishing	Code
Zinc alloy body bright black powder coated, base and strike stainless steel	BK

Insert Material/Finishing code * into Latch/Strike Part No.

TLZ604 - Latch with key-lock



Latch	Strike	Ø holes
TLZ604.1*	PG604.1*	3,1
TL604.1* (without lock)	PG604.1*	3,1

Material and Finishing	Code
Zinc alloy body black chrome plated, base and strike stainless steel	CK

Insert Material/Finishing code * into Latch/Strike Part No.



EINPRESSBEFESTIGER
SELF CLINCHING FASTENERS



BLINDNIETMUTTERN
BLIND RIVET NUTS

SCHWEISSBOLZEN
WELDING STUDS



**BLINDNIETEN, SCHLIESS-
RINGBOLZEN**
BLIND RIVETS, LOCK BOLTS



KÄFIGMUTTERN
CAGE NUTS

**EINSÄTZE UND
GEWINDETRÄGER**
**INSERTS AND
THREADED PARTS**



**GEWINDEINSÄTZE FÜR
METALLANWENDUNGEN**
**THREAD INSERTS
FOR METALS**



LEICHTBAUBEFESTIGER
LIGHTWEIGHT FASTENERS



VERSCHLUSSELEMENTE
LOCKS

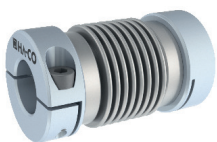
**ZENTRALSCHMIERANLAGEN,
PUMPEN UND VERTEILER**
**CENTRAL LUBRICATION SYSTEMS,
PUMPS AND DISTRIBUTERS**



DICHTSTOPFEN
SEALING PLUGS



SCHNELLKUPPLUNGEN
QUICK COUPLINGS

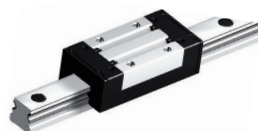


**KUPPLUNGEN UND
MASCHINENELEMENTE**
**COUPLINGS AND MACHINE
ELEMENTS**

PSG LAUFROLLENFÜHRUNG
PSG LINEARMOTION



ALUX-SCHIENENFÜHRUNG
ALUX-GUIDE RAIL



TELESKOPSCHIENEN
TELESCOPIC SLIDES



**BAUGRUPPENMONTAGE,
ENGINEERING**
**MOUNTING THE ASSEMBLY,
ENGINEERING**

**DREHTEILE,
ZEICHNUNGSTEILE**
**TURNING AND SPECIAL
DRAWING PARTS**



